

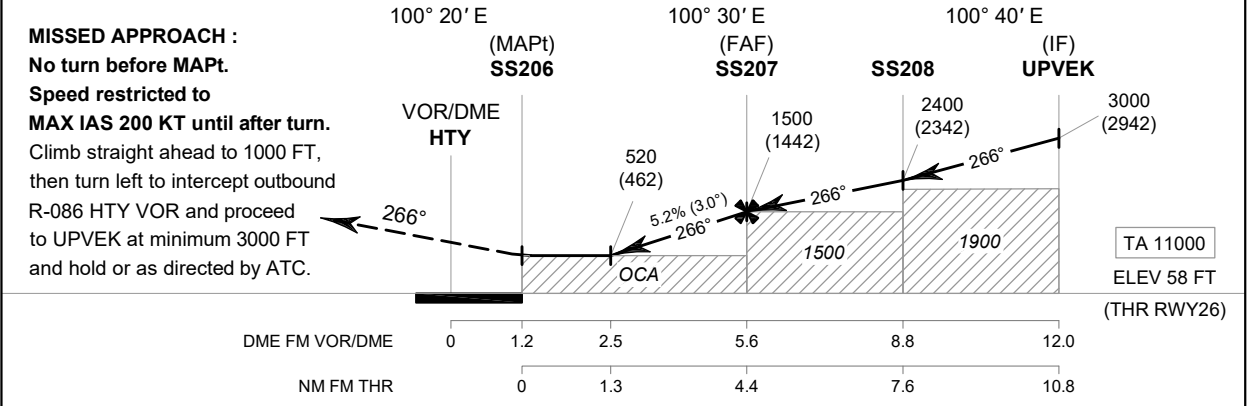
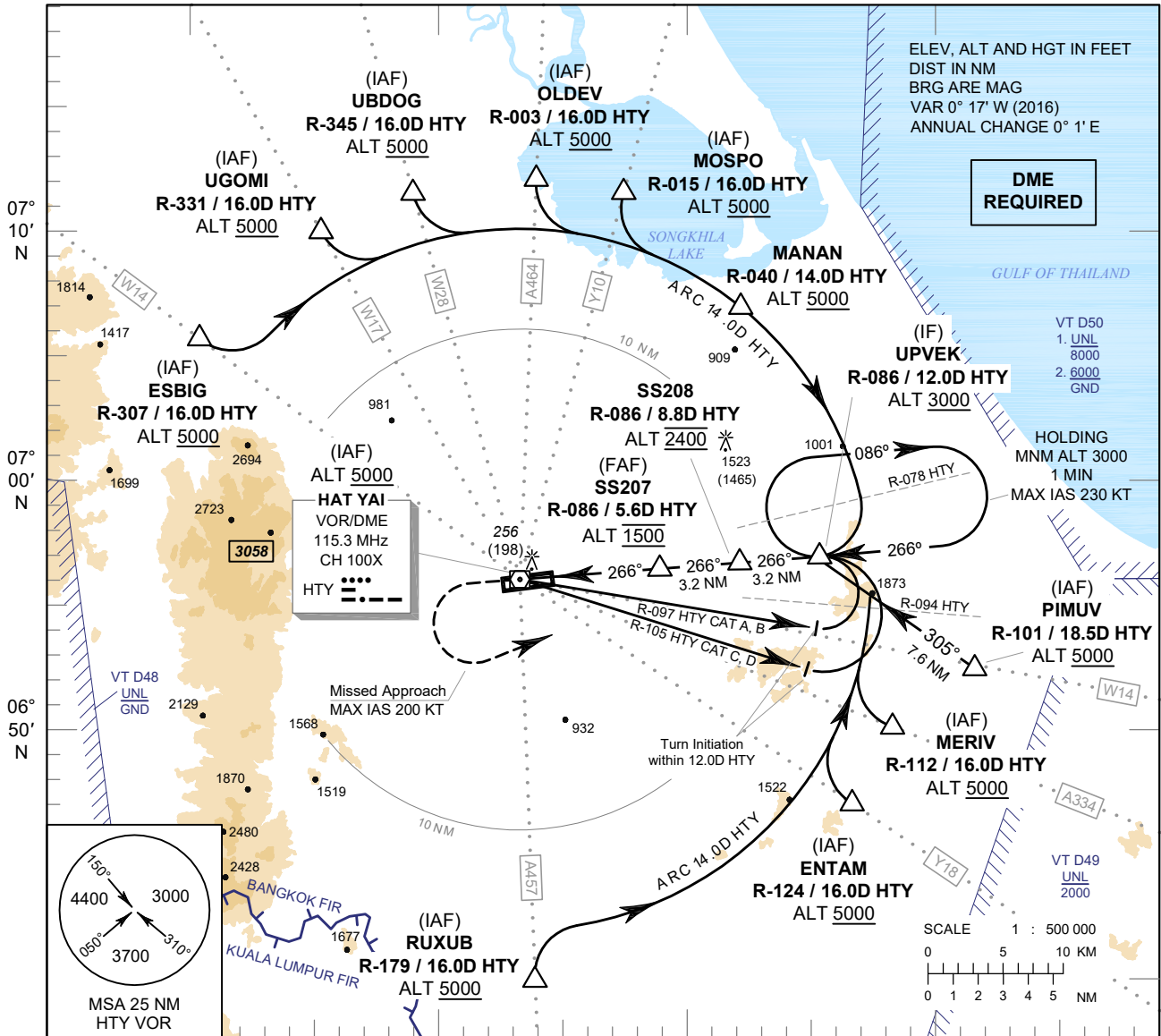
INSTRUMENT APPROACH CHART - ICAO

AERODROME ELEV 90 FT
HEIGHTS RELATED TO THR RWY26 - ELEV 58 FT

APP : 126.7, 301.5
 TWR : 118.1, 275.8
 GND : 121.9, 257.8
 ATIS : 128.8

SONGKHLA / Hat Yai Intl (VTSS)

VOR RWY26



MISSED APPROACH :		(MAPt) SS206		(FAF) SS207		SS208		(IF) UPVEK				
No turn before MAPt.		VOR/DME HTY		1500 (1442)		2400 (2342)		3000 (2942)				
Speed restricted to MAX IAS 200 KT until after turn.		520 (462)		1500		1900		TA 11000				
Climb straight ahead to 1000 FT, then turn left to intercept outbound R-086 HTY VOR and proceed to UPVEK at minimum 3000 FT and hold as directed by ATC.		OCA		1500		1900		ELEV 58 FT (THR RWY26)				
		DME FM VOR/DME		0 1.2 2.5 5.6 8.8 12.0								
		NM FM THR		0 1.3 4.4 7.6 10.8								
OCA/H	A	B	C	D	Distance (HTY)	2.5D	3D	4D	5D	FAF		
Straight - in Approach	520 (462)				Altitude (Height)	520 (462)	680 (622)	995 (937)	1310 (1252)	1500 (1442)		
					Ground Speed	knot	70	90	100	120	140	160
Circling (OCH AAL)	900 (810)		1500 (1410)		Rate of Descent 5.2%	ft/min	369	474	527	632	737	843

CHANGE : REVISED CHART.