

**STANDARD DEPARTURE CHART-
INSTRUMENT (SID) - ICAO**

TRANSITION ALTITUDE
11000 FT

SPEED RESTRICTION
MAX IAS 250 KT AT OR
BELOW ALT 10000 FT
UNLESS OTHERWISE
AUTHORIZED BY ATC.

APP : 119.1, 262.5
: 120.3, 262.5
: 133.4, 262.5
: 122.35, 262.5
: 124.35, 262.5
: 125.2, 262.5
ARR : 121.1
: 126.3
TWR : 118.2, 274.5
: 119.0
DEP ATIS : 127.65

**BANGKOK/Suvarnabhumi Intl (VTBS)
RNAV RWY01L**

DOSBU3H GORSI3H HHN3H
KASNI3H KIGOB3H REGOS3H
RYN3H SABIS3H UKERA3H

**DOSBU3H, GORSI3H, KASNI3H, KIGOB3H,
REGOS3H, RYN3H**
REQUIRE MINIMUM CLIMB GRADIENT OF
273 FT PER NM (4.5%) UNTIL PASSING VARIS.

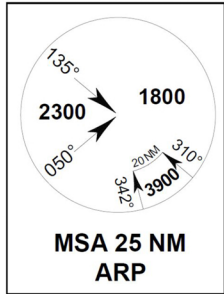
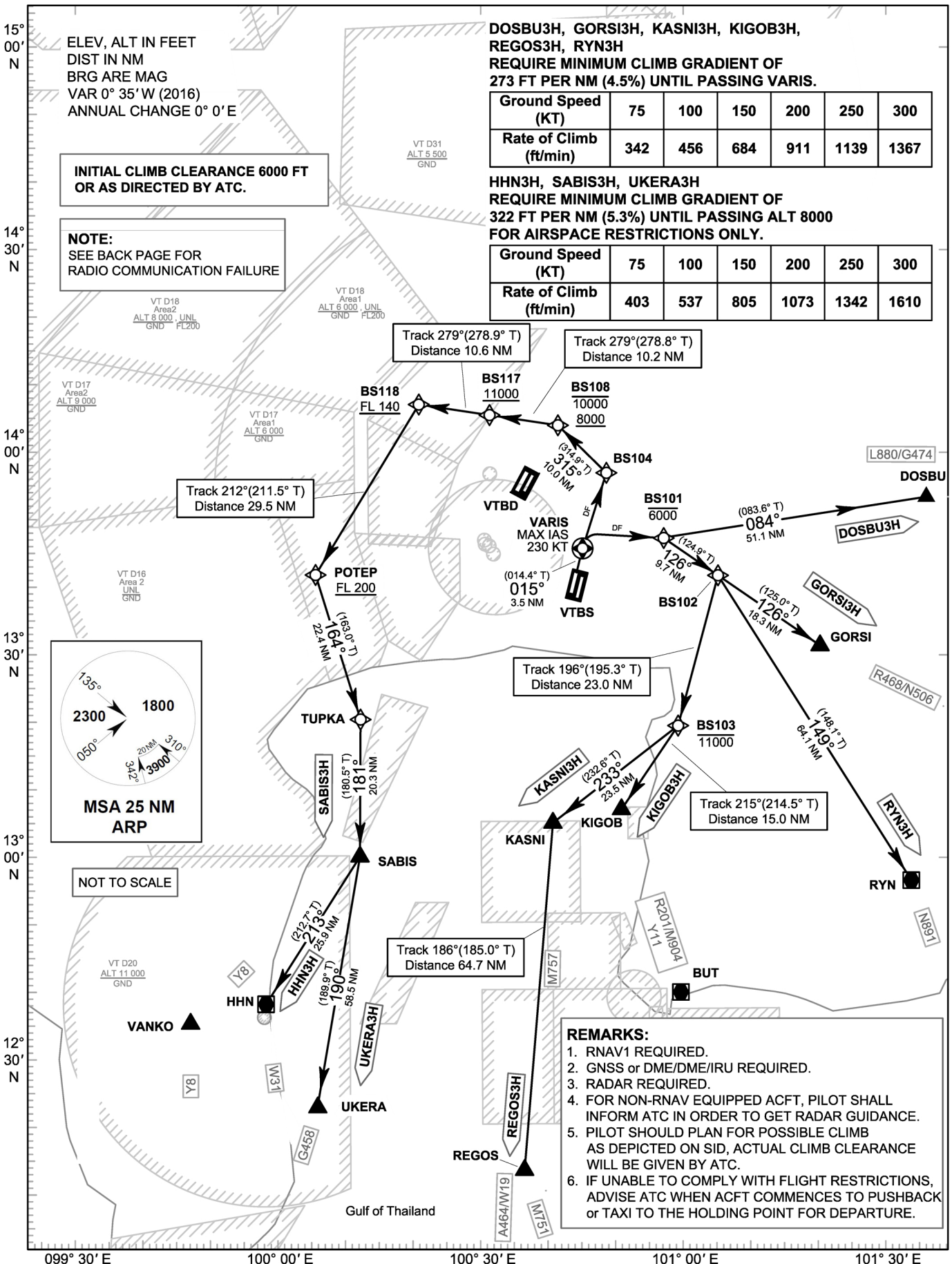
Ground Speed (KT)	75	100	150	200	250	300
Rate of Climb (ft/min)	342	456	684	911	1139	1367

HHN3H, SABIS3H, UKERA3H
REQUIRE MINIMUM CLIMB GRADIENT OF
322 FT PER NM (5.3%) UNTIL PASSING ALT 8000
FOR AIRSPACE RESTRICTIONS ONLY.

Ground Speed (KT)	75	100	150	200	250	300
Rate of Climb (ft/min)	403	537	805	1073	1342	1610

**INITIAL CLIMB CLEARANCE 6000 FT
OR AS DIRECTED BY ATC.**

NOTE:
SEE BACK PAGE FOR
RADIO COMMUNICATION FAILURE



REMARKS:

1. RNAV1 REQUIRED.
2. GNSS or DME/DME/IRU REQUIRED.
3. RADAR REQUIRED.
4. FOR NON-RNAV EQUIPPED ACFT, PILOT SHALL INFORM ATC IN ORDER TO GET RADAR GUIDANCE.
5. PILOT SHOULD PLAN FOR POSSIBLE CLIMB AS DEPICTED ON SID, ACTUAL CLIMB CLEARANCE WILL BE GIVEN BY ATC.
6. IF UNABLE TO COMPLY WITH FLIGHT RESTRICTIONS, ADVISE ATC WHEN ACFT COMMENCES TO PUSHBACK or TAXI TO THE HOLDING POINT FOR DEPARTURE.

CHANGE: MSA.