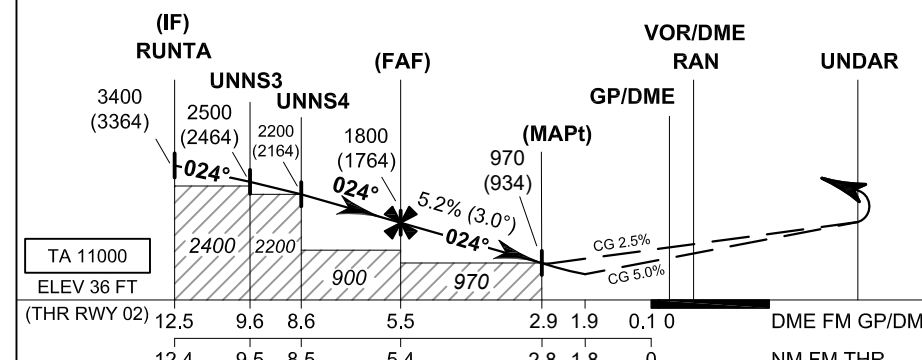
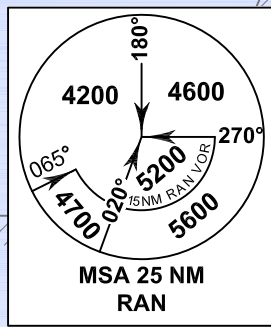
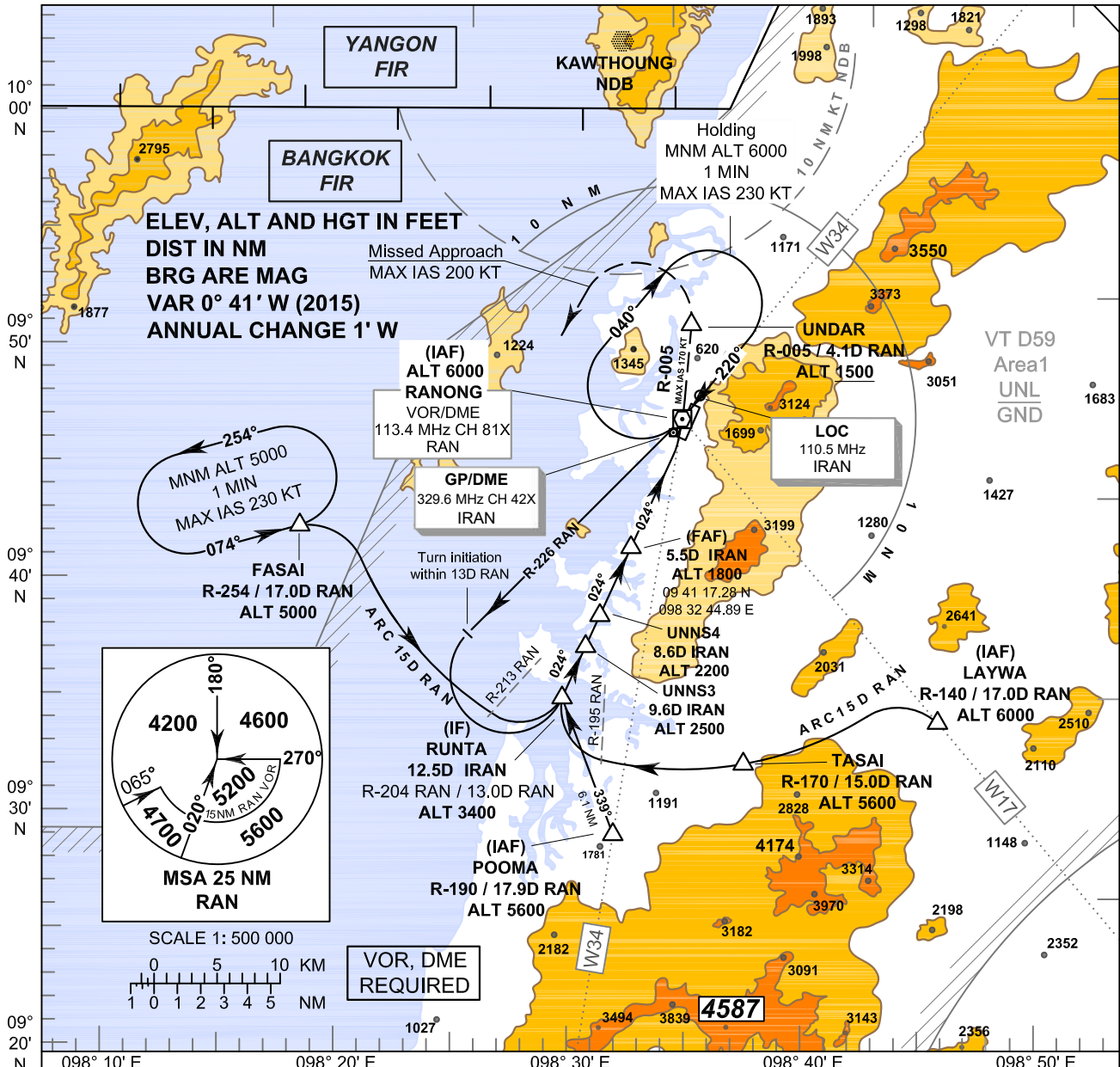


**INSTRUMENT APPROACH CHART - ICAO**

**AERODROME ELEV 57 FT**  
**HEIGHTS RELATED TO THR RWY 02 - ELEV 36 FT**

APP : 125.1  
 TWR : 122.25 , 236.6  
 ATIS : 126.475

**RANONG / Ranong (VTSR) LOC RWY02**



**MISSED APPROACH:**  
 No turn before MAPt.  
 Speed restricted to MAX IAS 170 KT until UNDAR and 200 KT until after turn.  
 At MAPt, turn left climb to intercept R-005 RAN VOR until UNDAR at or above 1500 FT, After UNDAR, turn left to intercept outbound R-254 RAN VOR, then proceed to FASAI at 5000 FT and hold or as directed by ATC

OCA/H	Distance (IRAN)				Distance (IRAN)	FAF	5 D	4 D	3 D	2.9 D
	A	B	C	D						
Straight - in Approach	970 (934)				Altitude (Height)	1800 (1764)	1635 (1599)	1320 (1284)	1000 (964)	970 (934)
Circling (OCH AAL)	Not Authorized				Ground speed	knot	70	90	100	120
	Not Authorized				Rate of descent	(ft/min)	369	474	527	632

**NOTE : OCA (OCH): 650 (614) FT; MAPt at 1.9 D FM GP/DME can be achieved for all aircraft categories which can commence a missed approach climb gradient of 5.0%(304 FT/NM) until passing UNDAR.**

CHANGE : OCA.