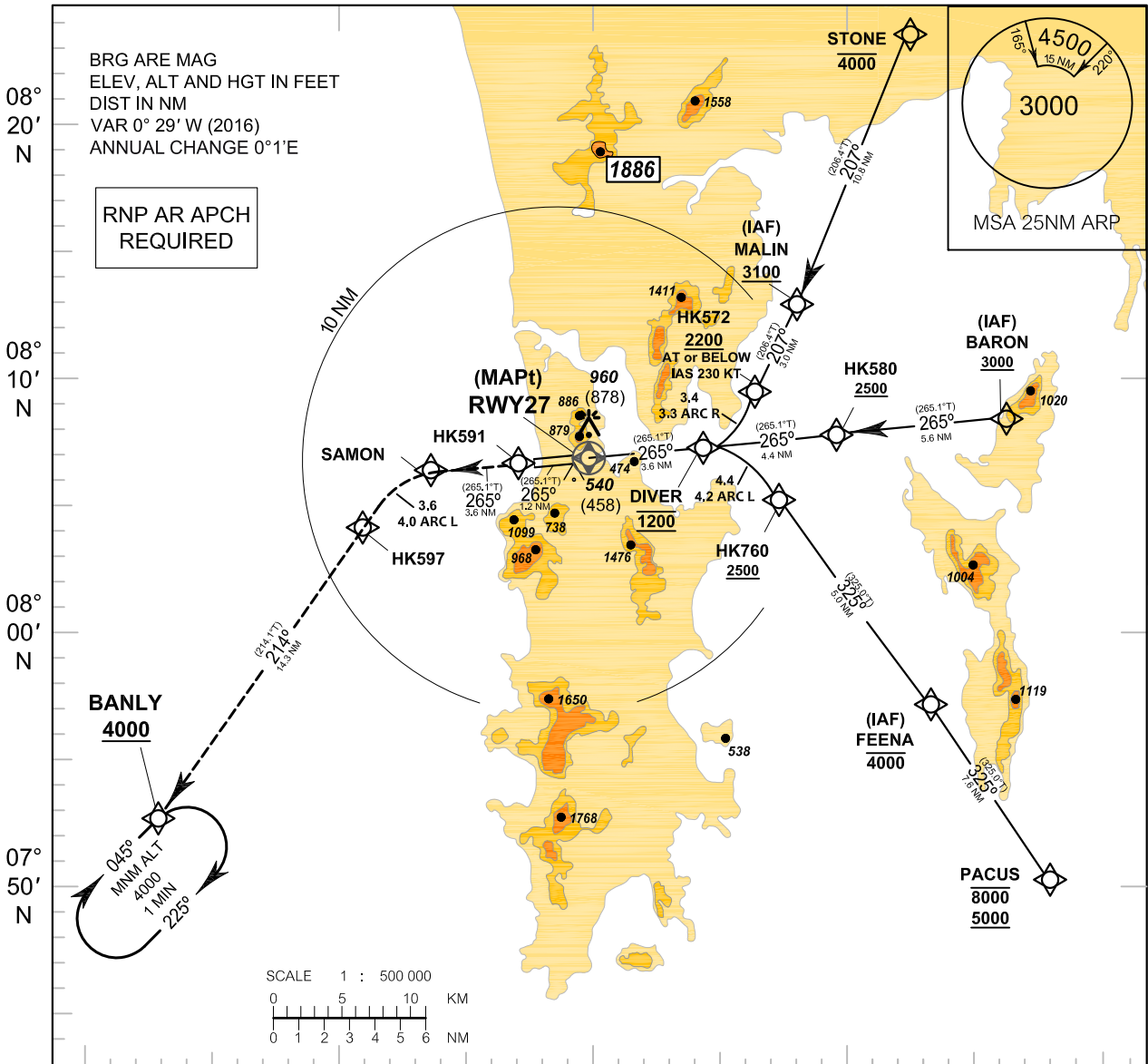


INSTRUMENT APPROACH CHART - ICAO
AERODROME ELEV 82 FT
HEIGHTS RELATED TO AERODROME ELEV

APP : 124.7, 284.0
 ARR : 120.7
 TWR : 118.1, 236.6
 GND : 121.9
 ATIS : 128.0

PHUKET / Phuket Intl (VTSP)

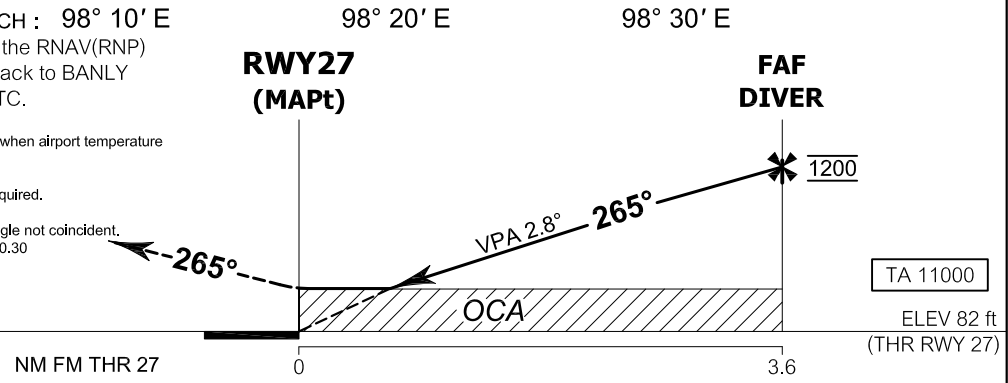
RNP y RWY27 (AR)



MISSED APPROACH : 98° 10' E
 Climb to 4000 ft via the RNAV(RNP)
 Missed Approach track to BANLY
 or as directed by ATC.

- NOTES:**
- 1) Approach not authorized when airport temperature below 20°c.
 - 2) RF Required.
 - 3) VTSP altimeter setting required.
 - 4) GNSS Required.
 - 5) PAPI and vertical path angle not coincident.
 - 6) Procedure requires RNP 0.30 from IAFs to HK591.
 - 7) TOGA to Nav required.

RDH 50 FT



OCA/H	C	D
RNP 0.30	780 (698)	

REMARK: 1. CIRCLING AND ALTERNATE - N/A
 2. AREA OUTSIDE IMAGE IS NOT TO SCALE

CHANGE: MAG VAR. MAGNETIC TRACK WP STONE - WP MALIN - WP HK572.