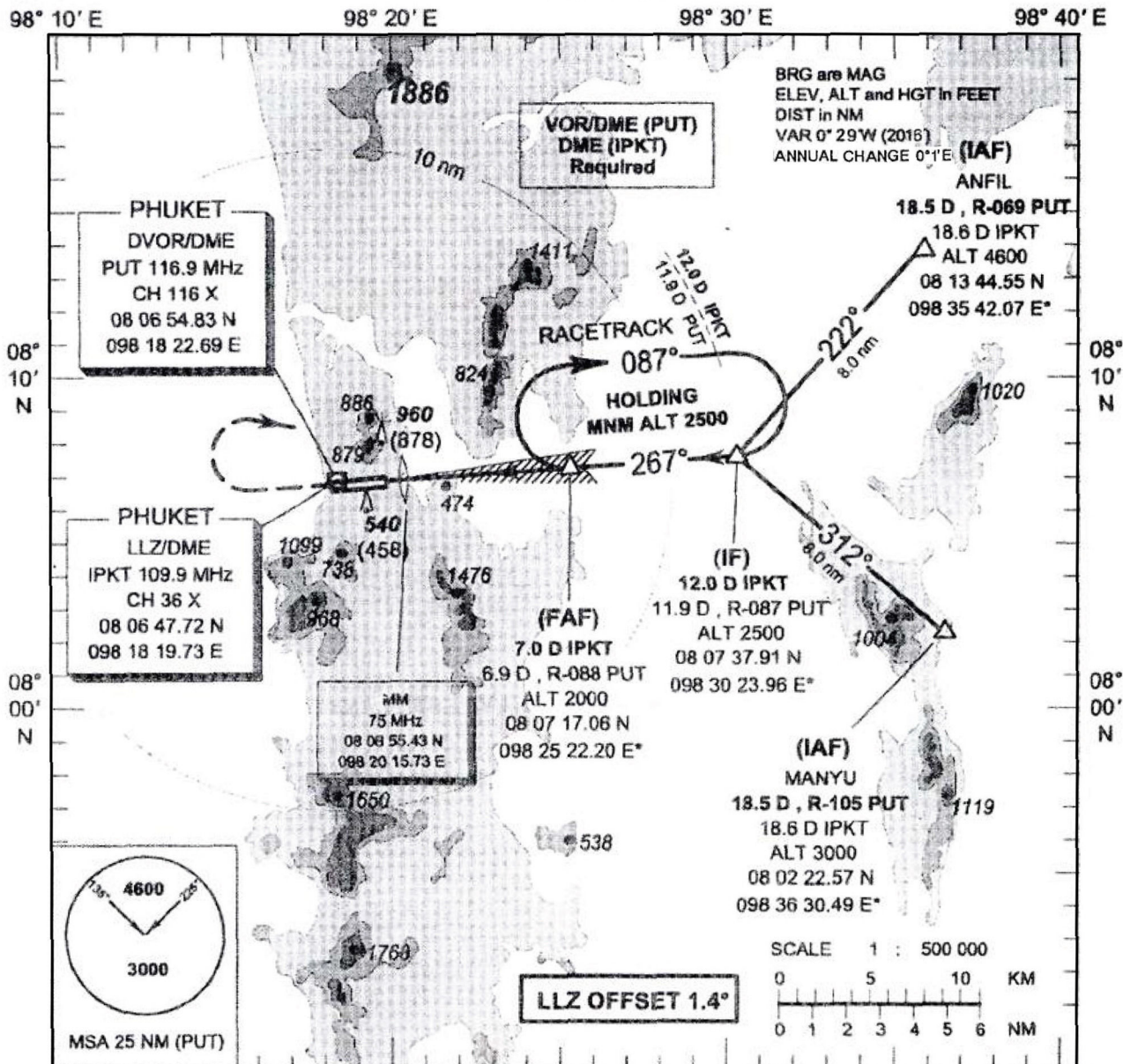


**INSTRUMENT APPROACH CHART - ICAO**  
**AERODROME ELEV 82 ft**  
 HEIGHTS RELATED TO THR RWY 27 ELEV 82 ft

APP : 124.7, 284.0  
 ARR : 120.7  
 TWR : 118.1, 236.6  
 GND : 121.9  
 ATIS : 128.0

**PHUKET / Phuket Intl (VTSP)**  
**ILS or LLZ RWY 27**



TA 11000

**MISSED APPROACH :**

Climb straight ahead to 2500 (2418) ft then turn right direct to FAF at 2500 (2418) ft and hold or as directed by ATC.

THR ELEV 82

NM FM THR 27

DME FM LLZ/DME

OCA/H		A	B	C	D	Distance (IPKT)	4D	5D	6D	7D		
Straight - in approach	CAT I	550 (468)		560 (478)		Altitude (Height)	985 (903)	1325 (1243)	1665 (1583)	2000 (1918)		
		770 (688)				Ground speed (GS)	knot	100	120	140	160	180
LLZ Only		770 (688)				Rate of descent (ft/min)	570	680	795	910	1020	1135
Circling (OCH AAL)		1300 (1218)		1400 (1318)		FAF-MAPT 5.0 nm (min/s)	3:00	2:30	2:09	1:53	1:40	1:30

**REMARK :** Circling to the Right (North of aerodrome) only.

CHANGE : MAG VAR.