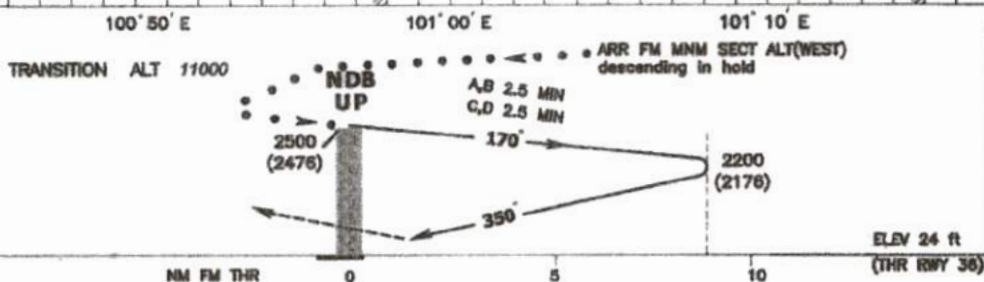
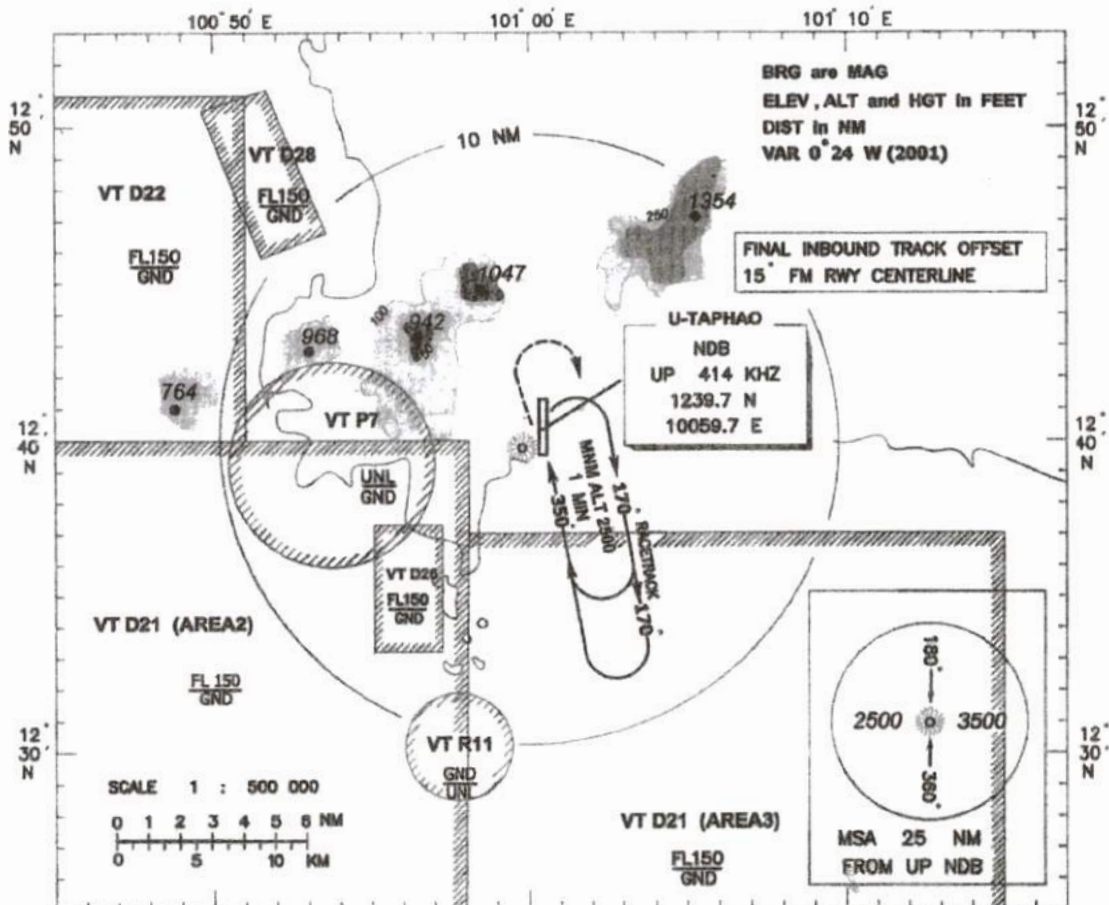


INSTRUMENT
APPROACH
CHART-ICAO

AERODROME ELEV 59 ft
HEIGHTS RELATED TO
THR RWY 36 ELEV 24 ft

APP 119.7, 273.3
TWR 118.3, 227.0

RAYONG / U-Taphao INTL
NDB
RWY 36



MISSED APPROACH: Climb on track 350 to NDB then climb on bearing 350 to 1200 (1176) then turn right climbing to NDB 2500(2476) ft and hold.

CHANGE: OCA.

OCA / H	A	B	C	D
Straight in approach	790 (766)			
Circling	1200 (1141)	1450 (1391)		