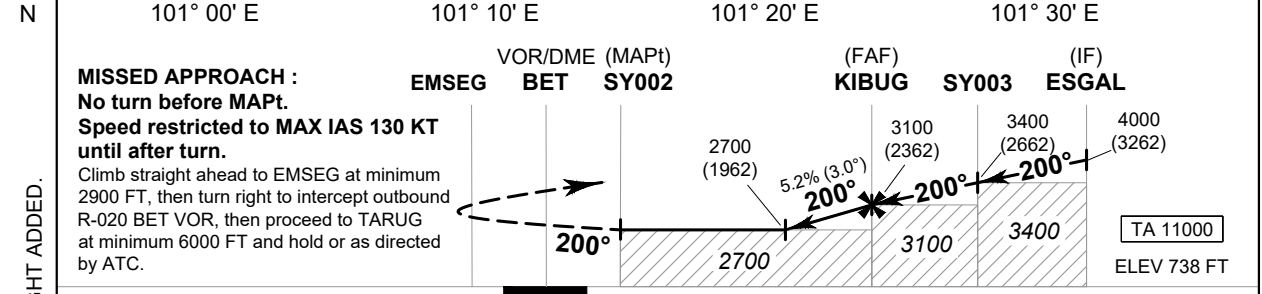
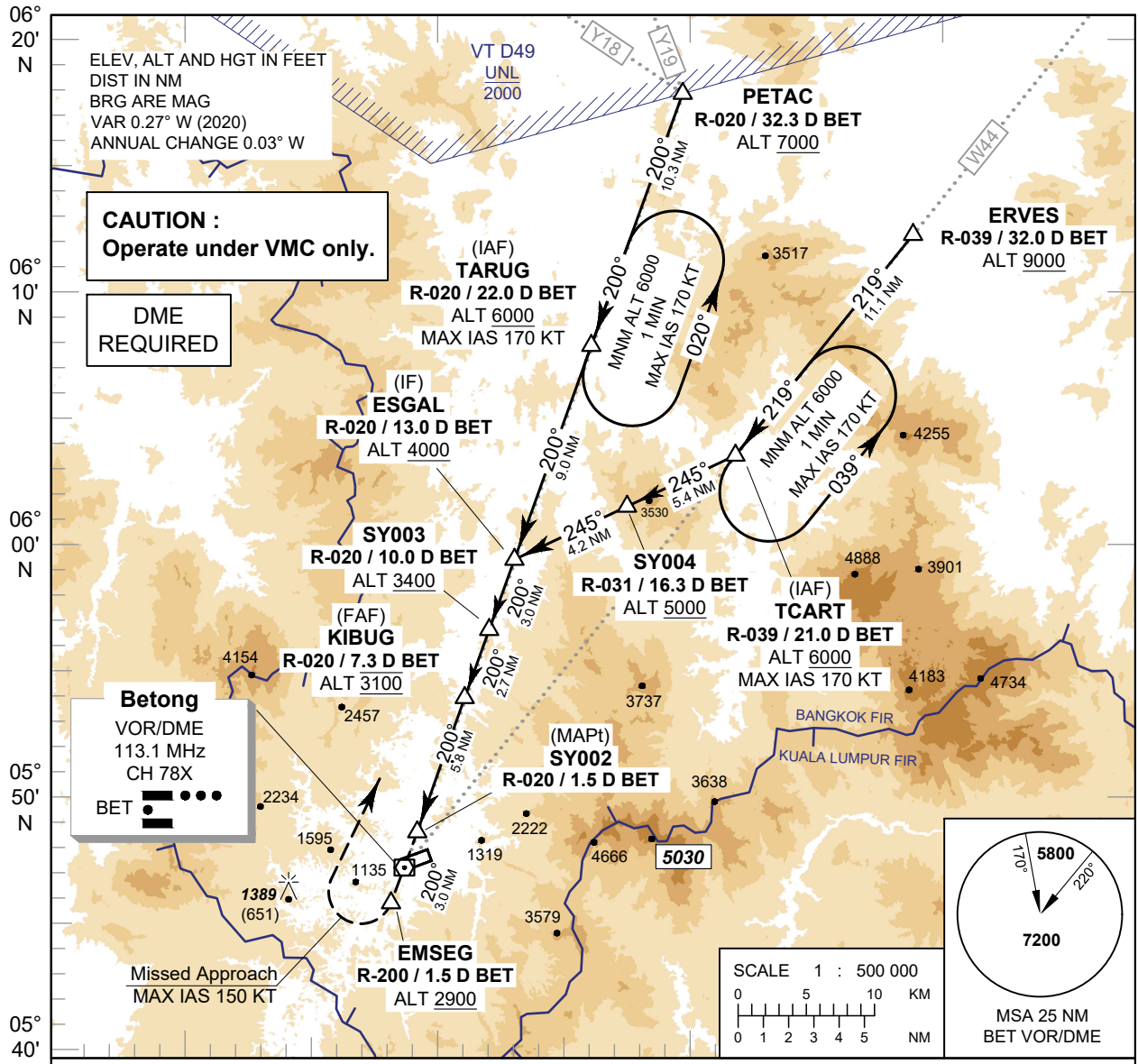


**INSTRUMENT APPROACH CHART - ICAO**      **AERODROME ELEV 738 FT**  
**HEIGHTS RELATED TO AERODROME ELEV**

APP : 125.55  
 TWR : 124.15, 236.6  
 GND : 122.15  
 ATIS : 128.50

**YALA / Betong (VTSY)**  
**VOR a**



Straight - in approach	OCA/H	A	B	C	Distance (BET)	6.1 D	7.0 D	FAF
	Altitude (Height)	Not authorized			2700 (1962)	3000 (2262)	3100 (2362)	
Circling (OCH AAL)	2700 (1962)				Rate of descent (5.2%)	ft/min	369	474
	Ground speed	knot	70	90	100	120	140	160
					Rate of descent (5.2%)	ft/min	369	474
					Rate of descent (5.2%)	ft/min	527	632
					Rate of descent (5.2%)	ft/min	737	843

**REMARK :** 1. FOR CIRCLING RESTRICTION, SEE VERSO.  
 2. TAKE CAUTION TO REMAIN WITHIN BANGKOK FIR WHILE CIRCLING AND MISSED APPROACH DUE TO PROXIMITY OF KUALA LUMPUR FIR.  
 3. LANDING DISTANCE AVAILABLE (LDA) IS 1,800 m.

CHANGE: OBSTACLE AND SPOT HEIGHT ADDED.