

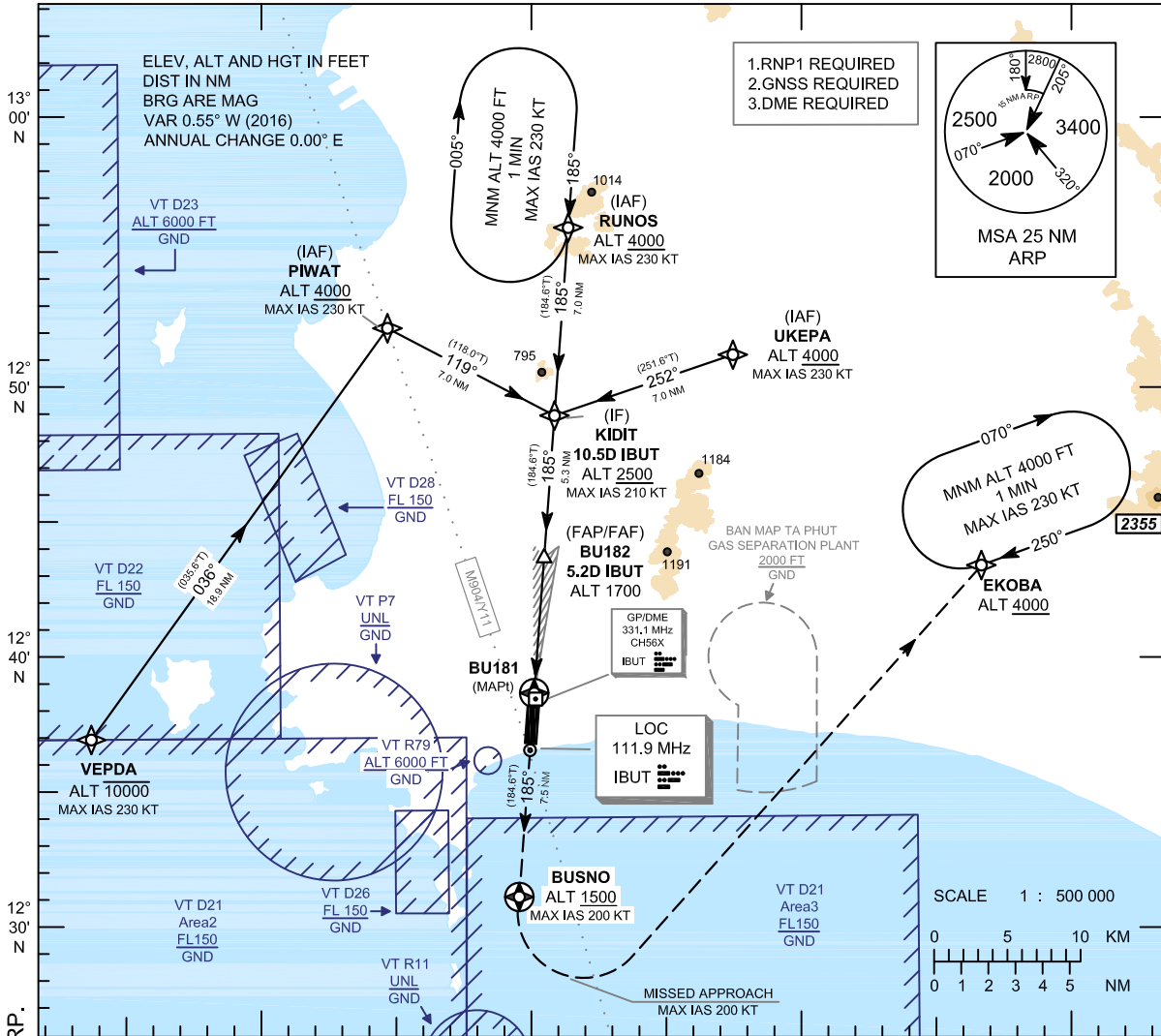
**INSTRUMENT
APPROACH
CHART - ICAO**

AERODROME ELEV 59 FT
HEIGHTS RELATED TO
THR RWY18 - ELEV 59 FT

APP : 119.7 , 134.5
238.3 , 273.3
TWR : 118.3 , 227.0
GND : 121.9 , 275.8
ATIS : 127.2

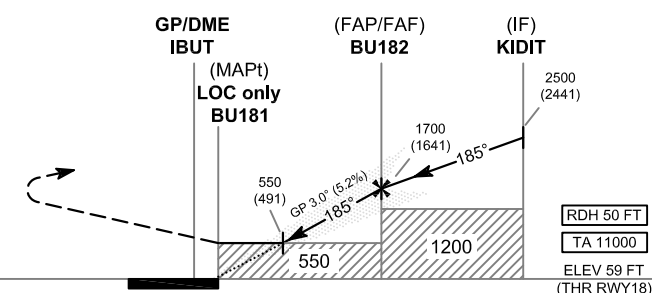
**RAYONG / U-TAPAO RAYONG
PATTAYA INTL (VTBU)**

ILS or LOC z RWY18



CAUTION : Aircraft shall avoid entering VT R11

MISSED APPROACH :
No turn before MAPt (for LOC only).
Speed restricted to
MAX IAS 200 KT until after turn.
climb on track 185° to BUSNO at or above
1500 FT, After BUSNO turn left direct to
EKOKBA at ALT 4000FT or above and hold
or as directed by ATC.



DME FM GP/DME	0	0.2	1.6	5.2	10.5
NM FM THR	0	0.4	1.4	5.0	10.3

CHANGE : MSA 15 NM BUT AMEND TO READ MSA 15 NM ARP.

OCA/H		A	B	C	D	GS OUT	Distance (IBUT)	1.6 D	2 D	3 D	4 D	FAF
Straight-in Approach	CAT I	300 (241)					Altitude (Height)	550 (491)	680 (621)	995 (936)	1310 (1251)	1700 (1641)
		LOC only		550 (491)		Ground speed		knot	70	90	100	120
Circling (OCH AAL)		1200 (1141)	1450 (1391)		Rate of descent (5.2%)	ft/min	369	474	527	632	737	843