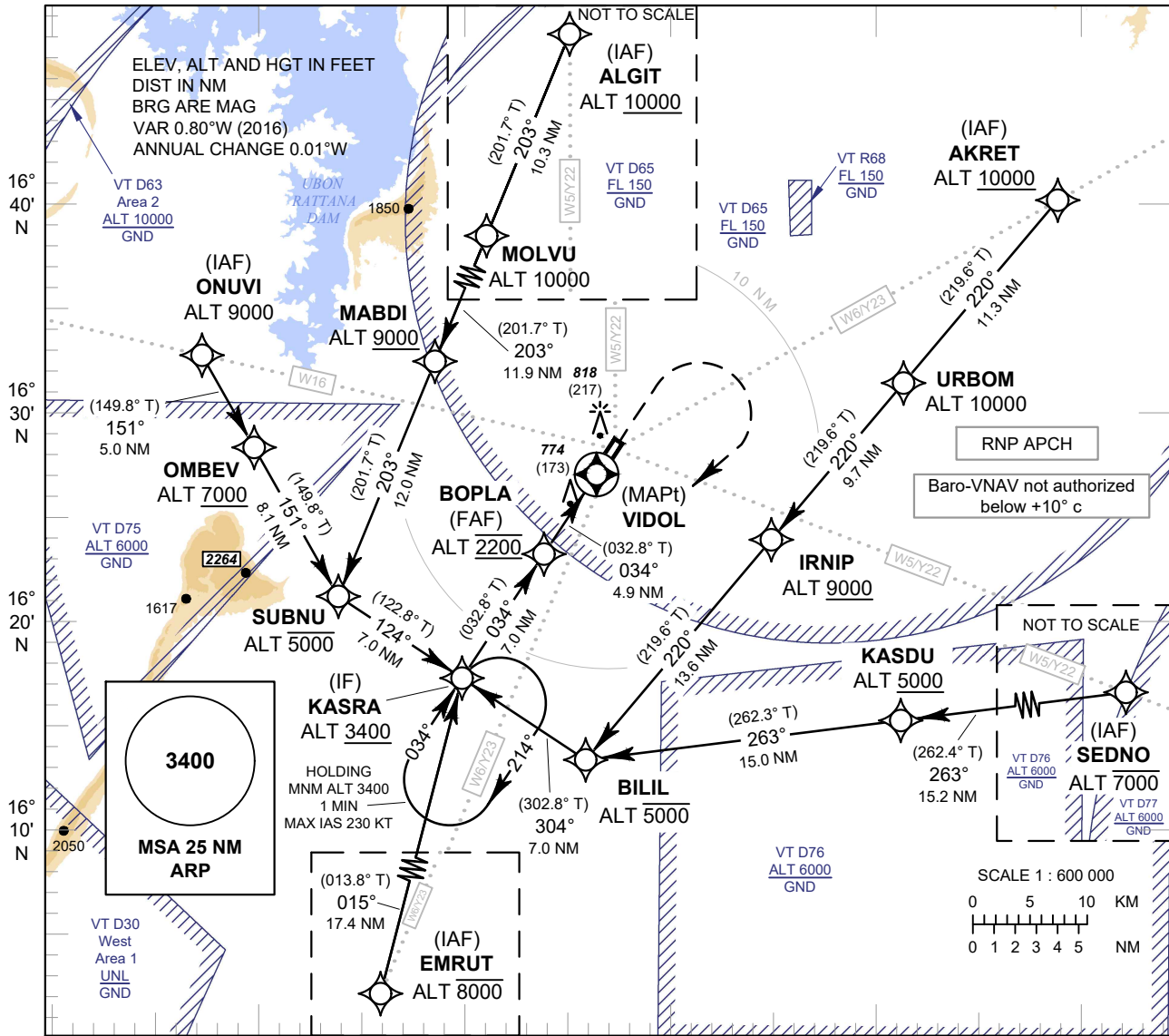


**INSTRUMENT
APPROACH
CHART - ICAO**

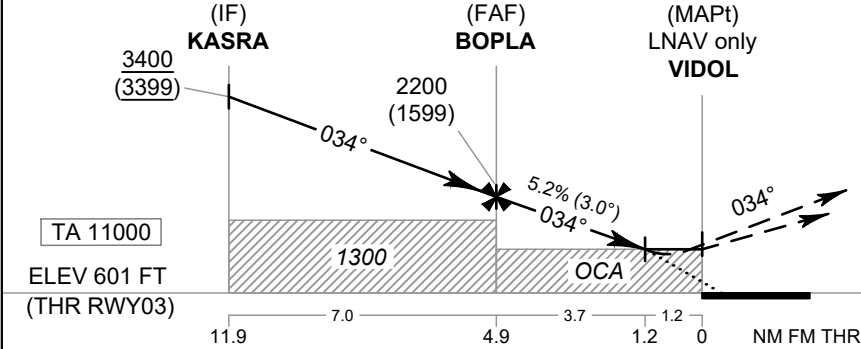
**AERODROME ELEV 670 FT
HEIGHTS RELATED TO
THR RWY03 - ELEV 601 FT**

APP : 123.4 , 240.0
TWR : 122.25 , 236.6
GND : 121.9
ATIS : 126.85

**KHON KAEN /
Khon Kaen (VTUK)
RNP RWY03**



102° 20' E 102° 30' E 102° 40' E 102° 50' E 103° 00' E 103° 10' E



MISSED APPROACH :
No turn before MAPt.
Climb on track 034° to 1500 FT, then turn right direct to KASRA at minimum 3400 FT and hold or as directed by ATC.

OCA/H	A	B	C	D	NM to NEXT WPT	FAF	4 NM	3 NM	2 NM	1.2NM		
LNAV / VNAV	960 (359)				Altitude (Height)	2200 (1599)	1915 (1314)	1600 (999)	1280 (679)	1030 (429)		
LNAV	1090 (489)				Ground Speed	knot	70	90	100	120	140	160
Circling (OCH AAL)	1500 (830)				Rate of Descent 5.2%	ft/min	369	474	527	632	737	843

CHANGE: ROUTE Y22, Y23 ADDED.