

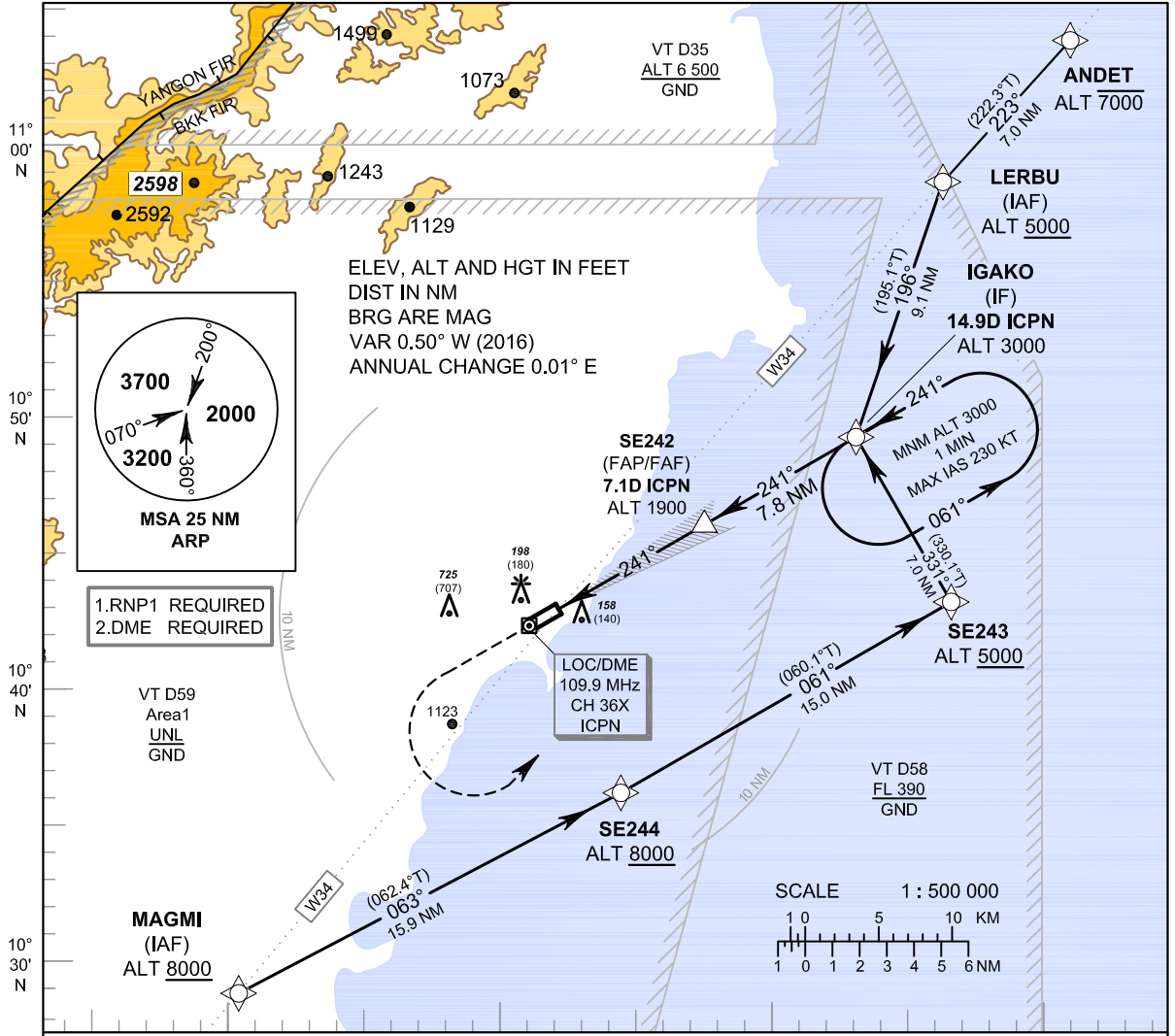
**INSTRUMENT
APPROACH
CHART - ICAO**

AERODROME ELEV 18 FT
HEIGHTS RELATED TO
THR RWY24 - ELEV 18 FT

APP : 122.6
TWR : 122.15 , 236.6
ATIS : 128.45

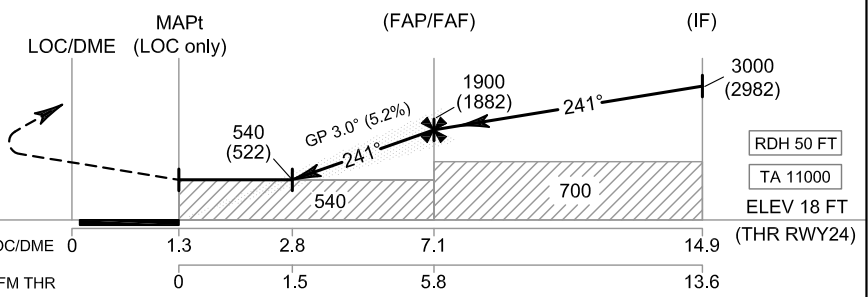
CHUMPHON / Chumphon (VTSE)

ILS or LOC z RWY24



MISSED APPROACH :

No turn before MAPt (for LOC Only).
Climb on track 241° to 1500 FT, then turn left direct to IF at 3000 FT and hold or as directed by ATC.



OCA/H		A	B	C	D	GS out	Distance to ICPN	2.8 D	3 D	4 D	5 D	6 D	FAF	
Straight - in Approach	CAT I	390 (372)						Altitude (Height)	540 (522)	605 (587)	920 (902)	1235 (1217)	1550 (1532)	1900 (1882)
	LOC only	540 (522)					Ground speed	knot	70	90	100	120	140	160
Circling (OCH AAL)		1500 (1482)					Rate of descent (5.2%)	ft/min	369	474	527	632	737	843

CHANGE : ATIS FREQUENCY ADDED.