

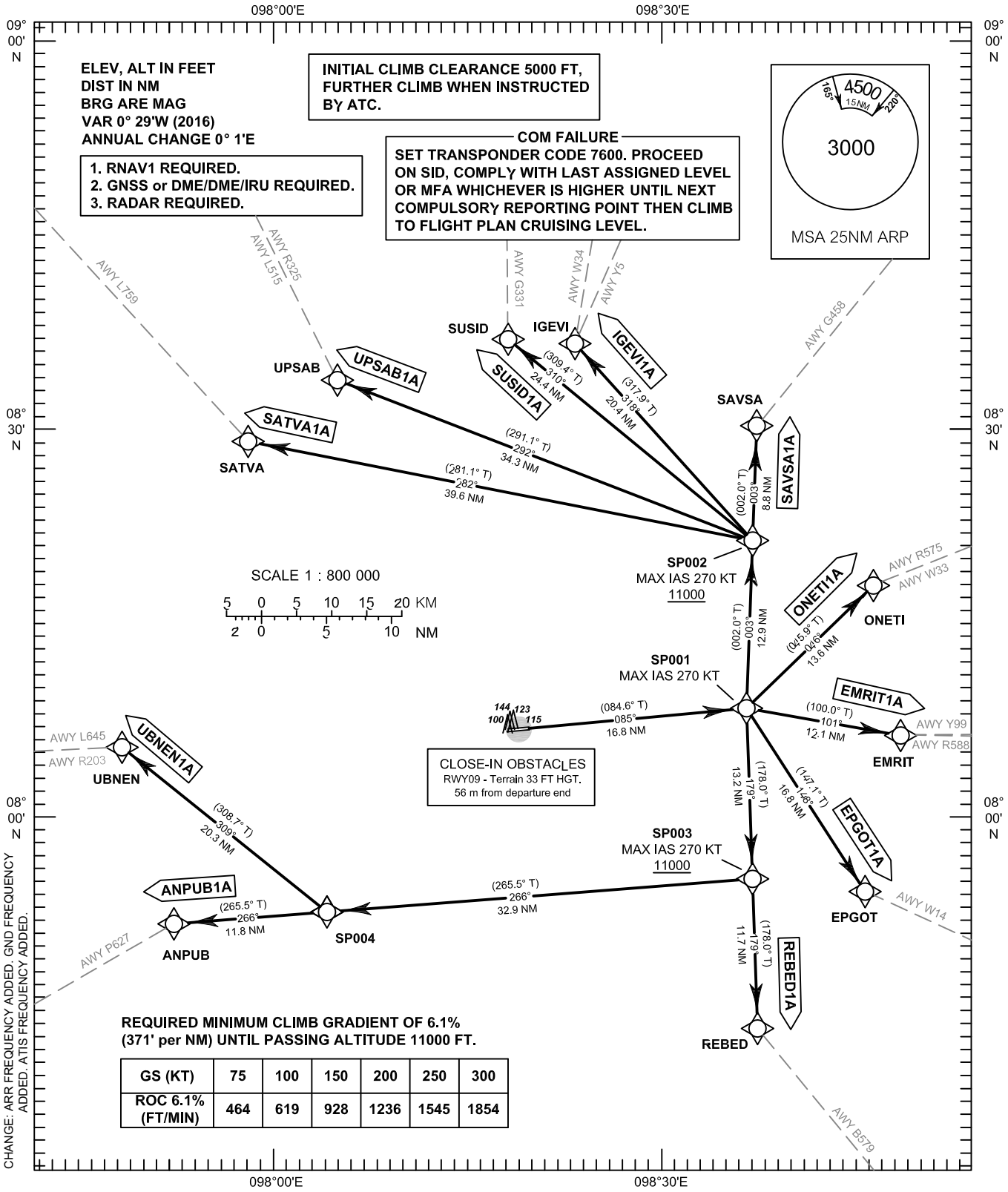
**STANDARD DEPARTURE CHART -
INSTRUMENT (SID) - ICAO**

TRANSITION ALTITUDE
11000 FT

APP : 124.7, 284.0 GND : 121.9
ARR : 120.7 ATIS : 128.0
TWR : 118.1, 236.6

**PHUKET/Phuket Intl (VTSP)
RNAV RWY09**

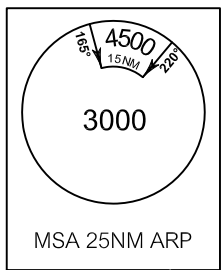
ANPUB1A EMRIT1A EPGOT1A IGEVI1A ONET11A REBED1A
SATVA1A SAVSA1A SUSID1A UBENEN1A UPSAB1A



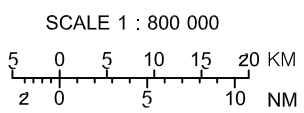
ELEV, ALT IN FEET
DIST IN NM
BRG ARE MAG
VAR 0° 29'W (2016)
ANNUAL CHANGE 0° 1'E

INITIAL CLIMB CLEARANCE 5000 FT,
FURTHER CLIMB WHEN INSTRUCTED
BY ATC.

COM FAILURE
SET TRANSPONDER CODE 7600. PROCEED
ON SID, COMPLY WITH LAST ASSIGNED LEVEL
OR MFA WHICHEVER IS HIGHER UNTIL NEXT
COMPULSORY REPORTING POINT THEN CLIMB
TO FLIGHT PLAN CRUISING LEVEL.



- 1. RNAV1 REQUIRED.
- 2. GNSS or DME/DME/IRU REQUIRED.
- 3. RADAR REQUIRED.



CLOSE-IN OBSTACLES
RWY09 - Terrain 33 FT HGT.
56 m from departure end

REQUIRED MINIMUM CLIMB GRADIENT OF 6.1%
(371' per NM) UNTIL PASSING ALTITUDE 11000 FT.

GS (KT)	75	100	150	200	250	300
ROC 6.1% (FT/MIN)	464	619	928	1236	1545	1854

CHANGE: ARR FREQUENCY ADDED, GND FREQUENCY ADDED, ATIS FREQUENCY ADDED.