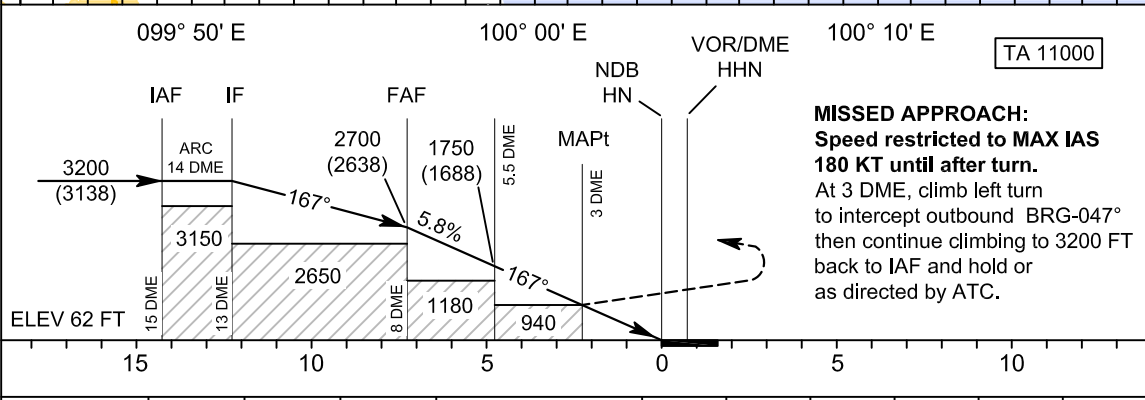
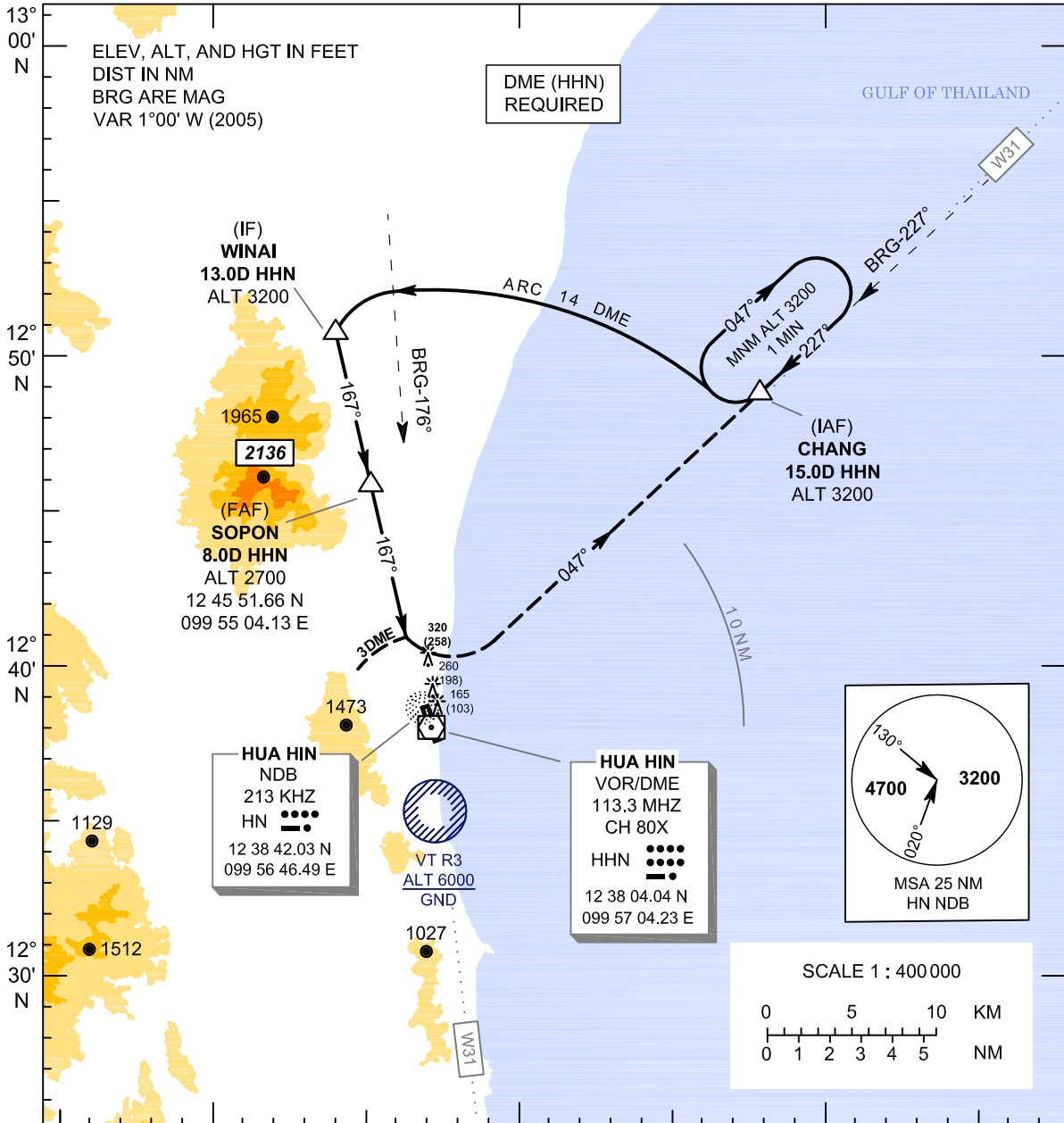


**INSTRUMENT
APPROACH
CHART - ICAO**

**AERODROME ELEV 62 FT
HEIGHTS RELATED TO
AERODROME ELEV**

APP : 126.2
TWR : 122.7, 236.6
GND : 121.9
ATIS : 126.8

**PRACHUAP KHIRI KHAN /
Hua Hin (VTPH)
NDB RWY16**



MISSED APPROACH:
Speed restricted to MAX IAS 180 KT until after turn.
At 3 DME, climb left turn to intercept outbound BRG-047° then continue climbing to 3200 FT back to IAF and hold or as directed by ATC.

OCA/H	A	B	C	Distance	8 DME	7 DME	6 DME	5 DME	4 DME	3 DME
Straight - in Approach	940 (878)			Altitude (Height)	2700 (2638)	2350 (2288)	2000 (1938)	1650 (1588)	1300 (1238)	940 (878)
				Ground Speed	knot	100	120	140	160	180
Circling	Not Authorized			FAF-MAPt 5 NM	min:sec	3:00	2:30	2:09	1:53	1:40
				Rate of Descent	ft/min	595	715	835	995	1075

CHANGE: VTR3 BUFFER ZONE REMOVED. VTR3 ALT REVISED. CONTOUR REVISED. MSA REVISED.