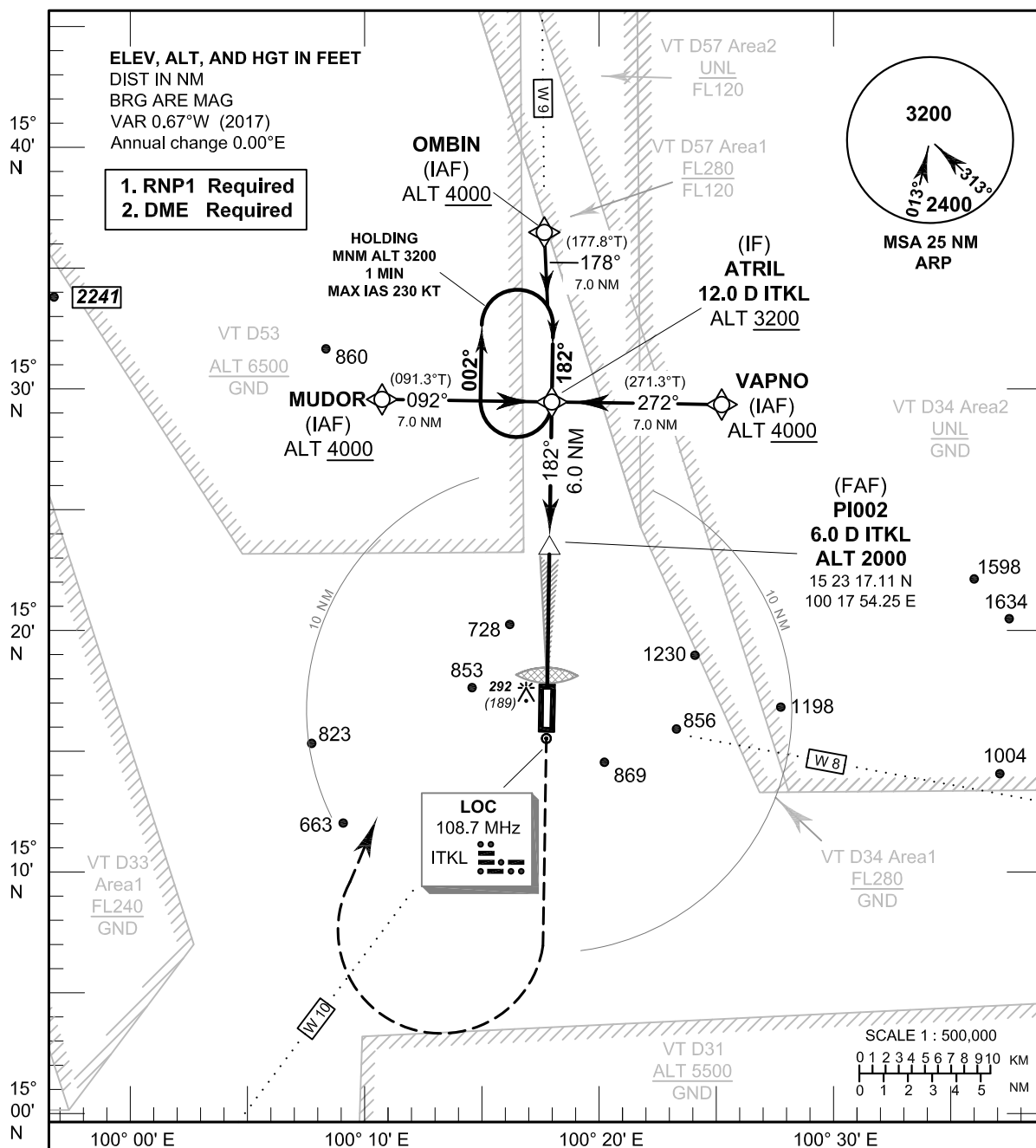


INSTRUMENT AERODROME ELEV 103 FT
APPROACH HEIGHTS RELATED TO
CHART-ICAO THR RWY18 - ELEV 103 FT

APP : 124.0, 325.0
 TWR : 133.25, 241.5
 GND : 121.75, 257.8

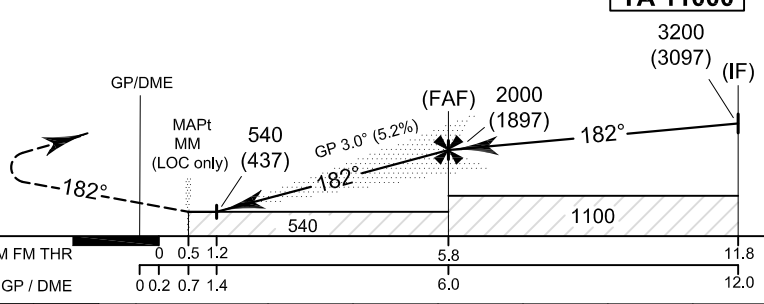
NAKHON SAWAN/Takhli (VTPI)
ILS or LOC y RWY18



CHANGE: VT D33, MORSE CODE OF RADIO NAVIGATION AIDS ADDED.

Missed Approach :
No turn before MAPt (for LOC only).
 Climb on track 182° to 3000 FT,
 then turn right direct to IF at 3200 FT
 and hold or as directed by ATC.

ILS RDH 50 FT
 ELEV 103 FT
 (THR RWY 18)



OCA/H	A	B	C	D	GS out	Distance (ITKL)	1.4 D	2 D	3 D	4 D	5 D	FAF
Straight-in approach CAT I	310 (207)				GS out	Altitude (Height)	540 (437)	720 (617)	1040 (937)	1355 (1252)	1670 (1567)	2000 (1897)
						Ground Speed	knot	70	90	100	120	140
LOC Only	540 (437)				Rate of descent (3.0°)	(ft/min)	372	478	531	637	743	849
Circling (OCH AAL)	1380 (1277)											

October 2018

MILITARY USE ONLY