

STANDARD DEPARTURE CHART - INSTRUMENT (SID) - ICAO

TRANSITION ALTITUDE
11000

APP : 120.7, 284.0
TWR : 118.9, 236.6
GND : 121.9

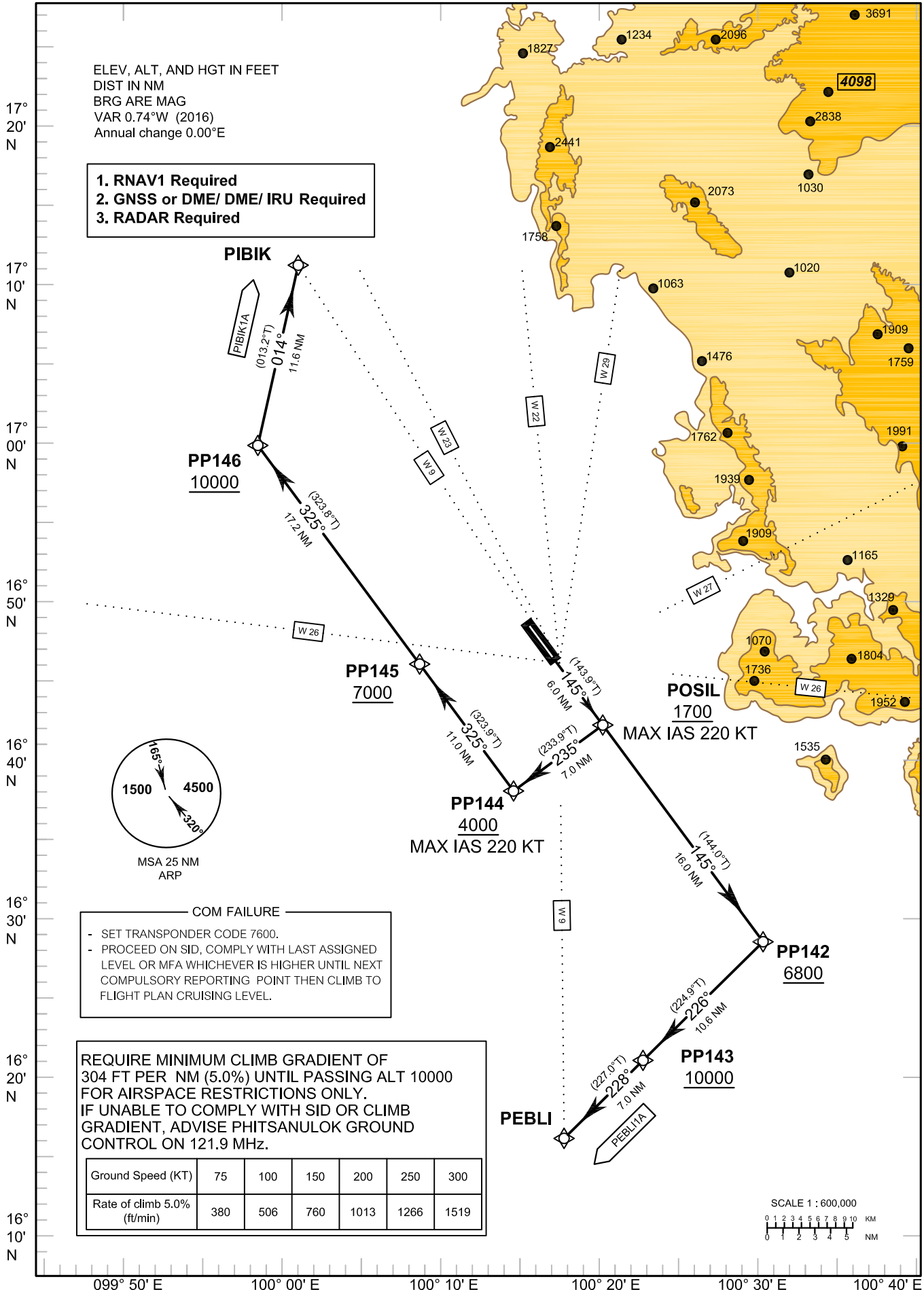
PHITSANULOK/Phitsanulok (VTPP)

RNAV RWY14

PEBL1A PIBIK1A

ELEV, ALT, AND HGT IN FEET
DIST IN NM
BRG ARE MAG
VAR 0.74°W (2016)
Annual change 0.00°E

1. RNAV1 Required
2. GNSS or DME/ DME/ IRU Required
3. RADAR Required



CHANGE: NEW CHART.