

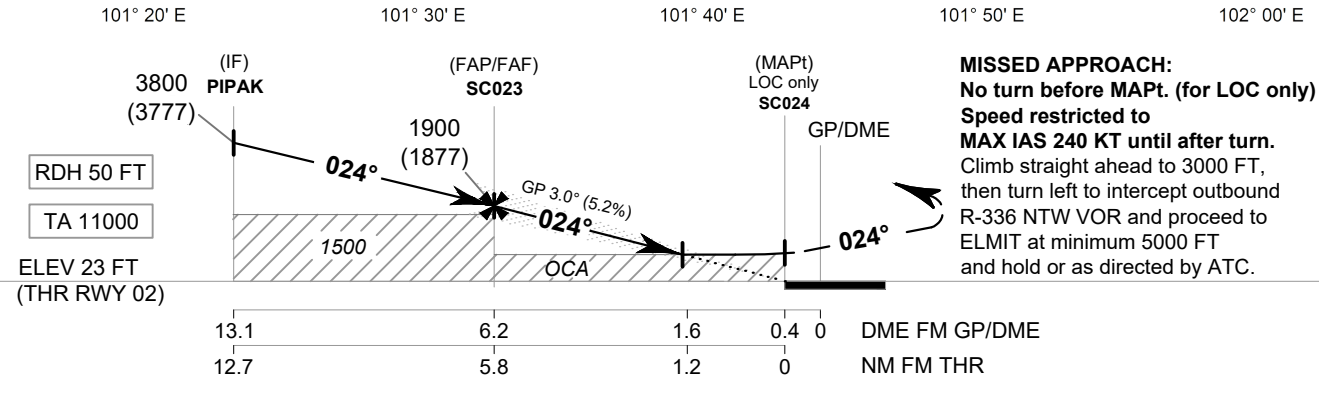
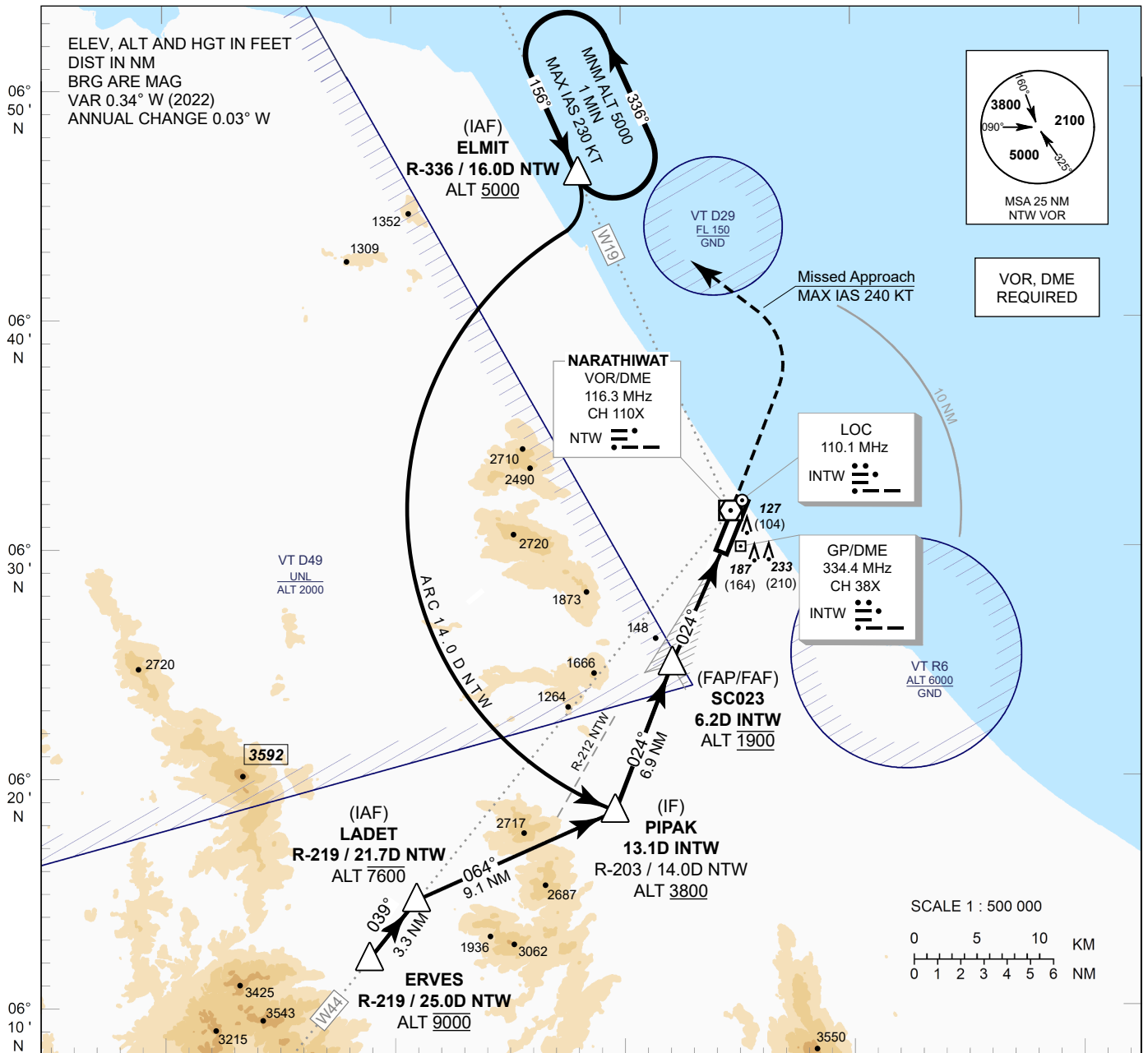
**INSTRUMENT APPROACH CHART - ICAO**

**AERODROME ELEV 23 FT**  
**HEIGHTS RELATED TO THR RWY02 - ELEV 23 FT**

APP : 125.55 MHz  
 TWR : 122.7, 236.6 MHz  
 GND : 121.9 MHz  
 ATIS : 383.0 kHz

**NARATHIWAT / Narathiwat (VTSC)**

**ILS or LOC y RWY02**



**MISSED APPROACH:**  
 No turn before MAPt. (for LOC only)  
 Speed restricted to MAX IAS 240 KT until after turn.  
 Climb straight ahead to 3000 FT, then turn left to intercept outbound R-336 NTW VOR and proceed to ELMIT at minimum 5000 FT and hold or as directed by ATC.

OCA/H		A	B	C	D	GS OUT	Distance (INTW)	FAF	6D	5D	4D	3D	2D	1.6D
Straight-in Approach	CAT I	300 (277)						Altitude (Height)	1900 (1877)	1840 (1817)	1525 (1502)	1210 (1187)	895 (872)	580 (557)
		450 (427)				Ground Speed		knot	70	90	100	120	140	160
Circling (OCH AAL)		900 (877)					Rate of Decent 5.2%	ft/min	369	474	527	632	737	843

CHANGE : NEW CHART.