

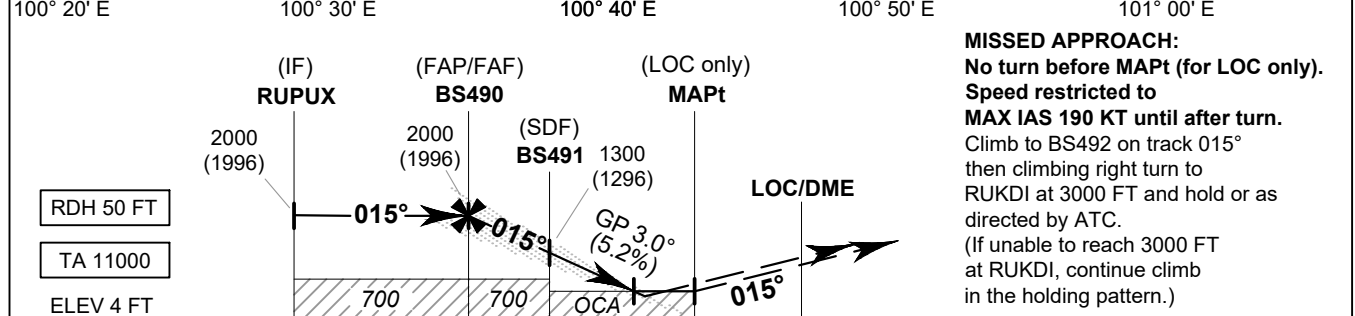
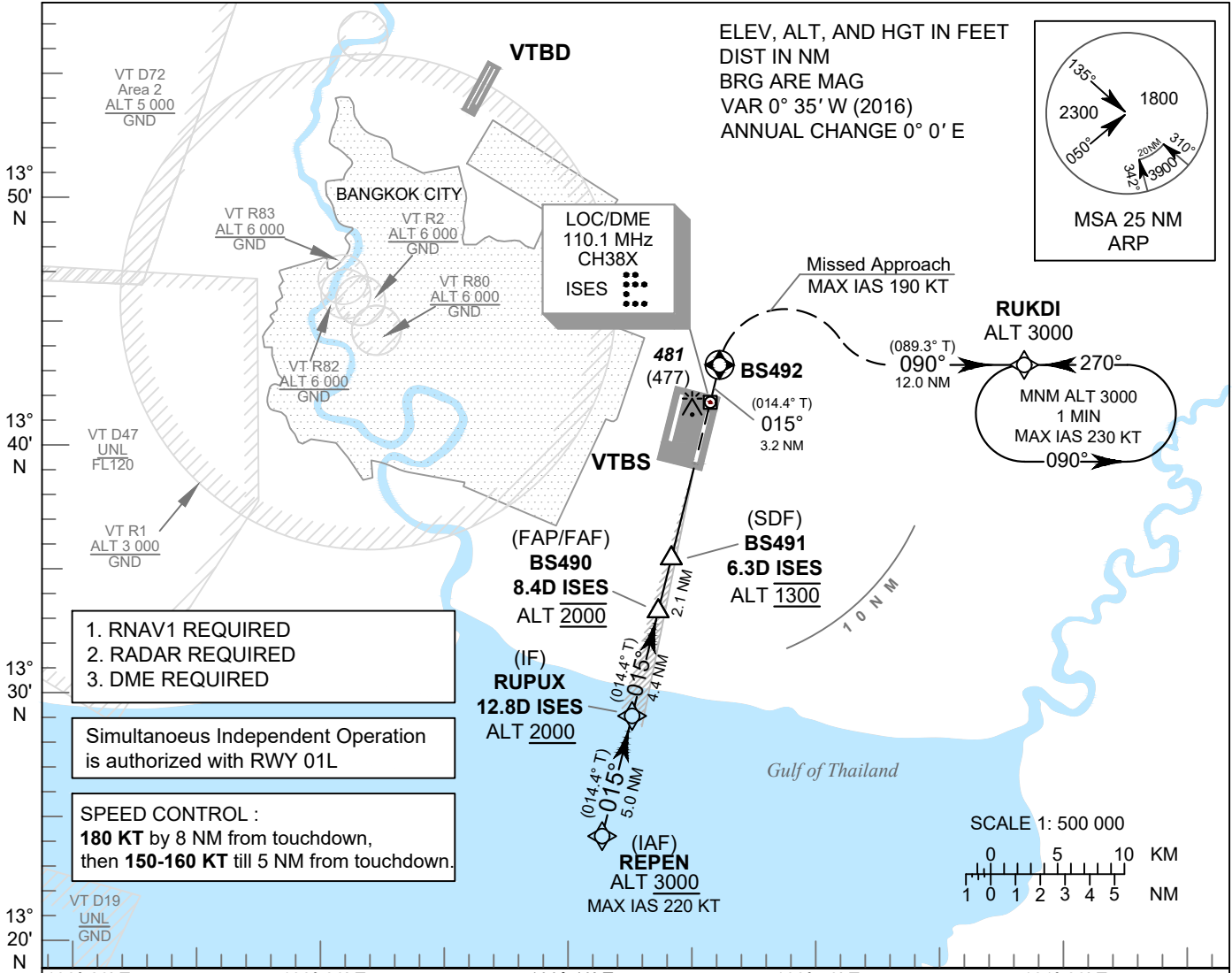
**INSTRUMENT
APPROACH
CHART - ICAO**

**AERODROME ELEV 4 FT
HEIGHTS RELATED TO
THR RWY01R - ELEV 4 FT**

APP	: 119.1, 262.5
	: 120.3, 262.5
	: 133.4, 262.5
	: 122.35, 262.5
	: 124.35, 262.5
	: 125.2, 262.5
ARR	: 121.1, 262.5
	: 126.3, 262.5
TWR	: 118.2, 274.5
	: 119.0
ARR ATIS	: 133.6, 278.6

BANGKOK / Suvarnabhumi Intl (VTBS)

**ILS or LOC z RWY01R
CAT II**



MISSED APPROACH:
No turn before MAPt (for LOC only).
Speed restricted to
MAX IAS 190 KT until after turn.
Climb to BS492 on track 015°
then climbing right turn to
RUKDI at 3000 FT and hold or as
directed by ATC.
(If unable to reach 3000 FT
at RUKDI, continue climb
in the holding pattern.)

OCA/H		A	B	C	D	GS OUT	Distance (ISES)	FAF	8 D	7 D	6 D	5 D	4 D
Straight-in Approach	CAT I	260 (256)					Distance (ISES)	2000	1855	1540	1225	910	590
	CAT II	190 (186)				Altitude (Height)		(1996)	(1851)	(1536)	(1221)	(906)	(586)
LOC only		590 (586)				Ground speed	knot	70	90	100	120	140	160
Circling (OCH AAL)		800 (796)	900 (896)		Rate of descent (5.2%)	ft/min	369	474	527	632	737	843	

CHANGE: REVISED CHART.