

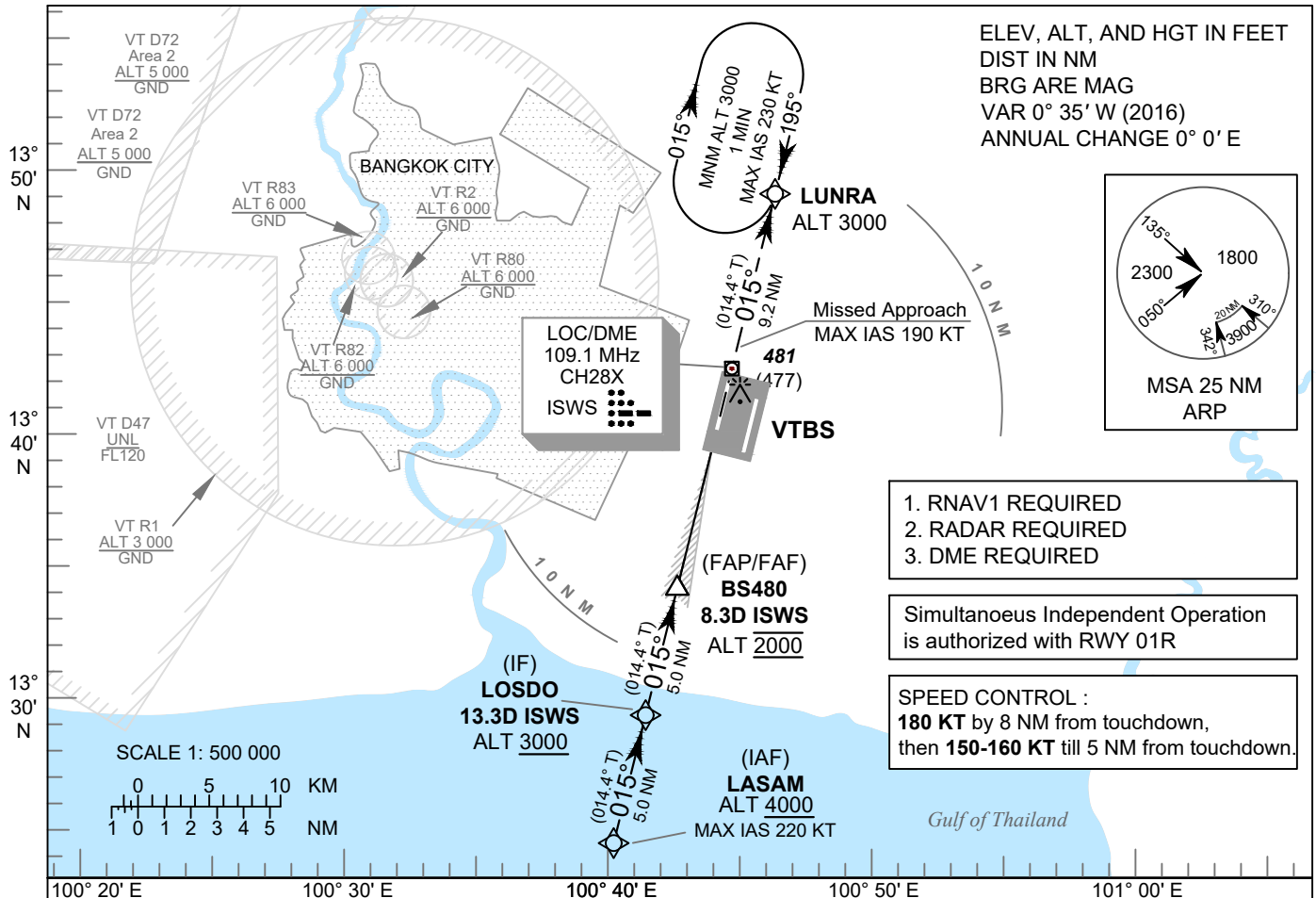
**INSTRUMENT  
APPROACH  
CHART - ICAO**

**AERODROME ELEV 4 FT  
HEIGHTS RELATED TO  
THR RWY01L - ELEV 4 FT**

APP	: 119.1, 262.5
	: 120.3, 262.5
	: 133.4, 262.5
	: 122.35, 262.5
	: 124.35, 262.5
	: 125.2, 262.5
ARR	: 121.1, 262.5
	: 126.3, 262.5
TWR	: 118.2, 274.5
	: 119.0
ARR ATIS	: 133.6, 278.6

**BANGKOK / Suvarnabhumi Intl (VTBS)**

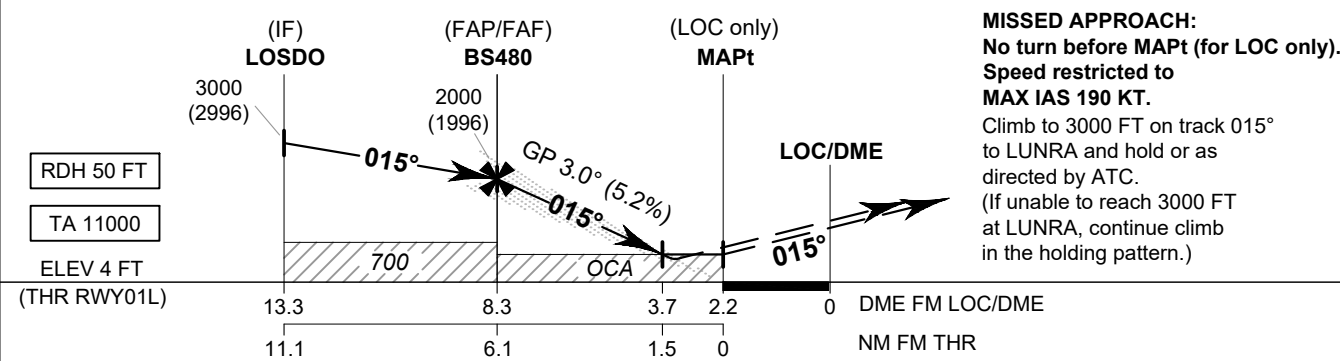
**ILS or LOC z RWY01L  
CAT II**



- 1. RNAV1 REQUIRED
- 2. RADAR REQUIRED
- 3. DME REQUIRED

Simultaneous Independent Operation is authorized with RWY 01R

**SPEED CONTROL :**  
180 KT by 8 NM from touchdown,  
then 150-160 KT till 5 NM from touchdown.



OCA/H	A	B	C	D	GS OUT	Distance (ISWS)	FAF	8 D	7 D	6 D	5 D	4 D	3.7 D
						Straight-in Approach	CAT I*	370 (366)			Altitude (Height)	2000 (1996)	1890 (1886)
	CAT II**	310 (306)			Ground speed	knot	70	90	100	120	140	160	
LOC only	530 (526)			Rate of descent (5.2%)	ft/min	369	474	527	632	737	843		
Circling (OCH AAL)	800 (796)		900 (896)										

**NOTE:** \*OCA (OCH) CAT I : 250 (246) FT of ILS procedures can be achieved for all aircraft categories which can commence a missed approach climb gradient of 5% (304 FT/NM) until passing ALT 1000 FT.  
\*\*OCA (OCH) CAT II : 150 (146) FT of ILS procedures can be achieved for all aircraft categories which can commence a missed approach climb gradient of 4% (243 FT/NM) until passing ALT 1000 FT.

CHANGE: REVISED CHART.