

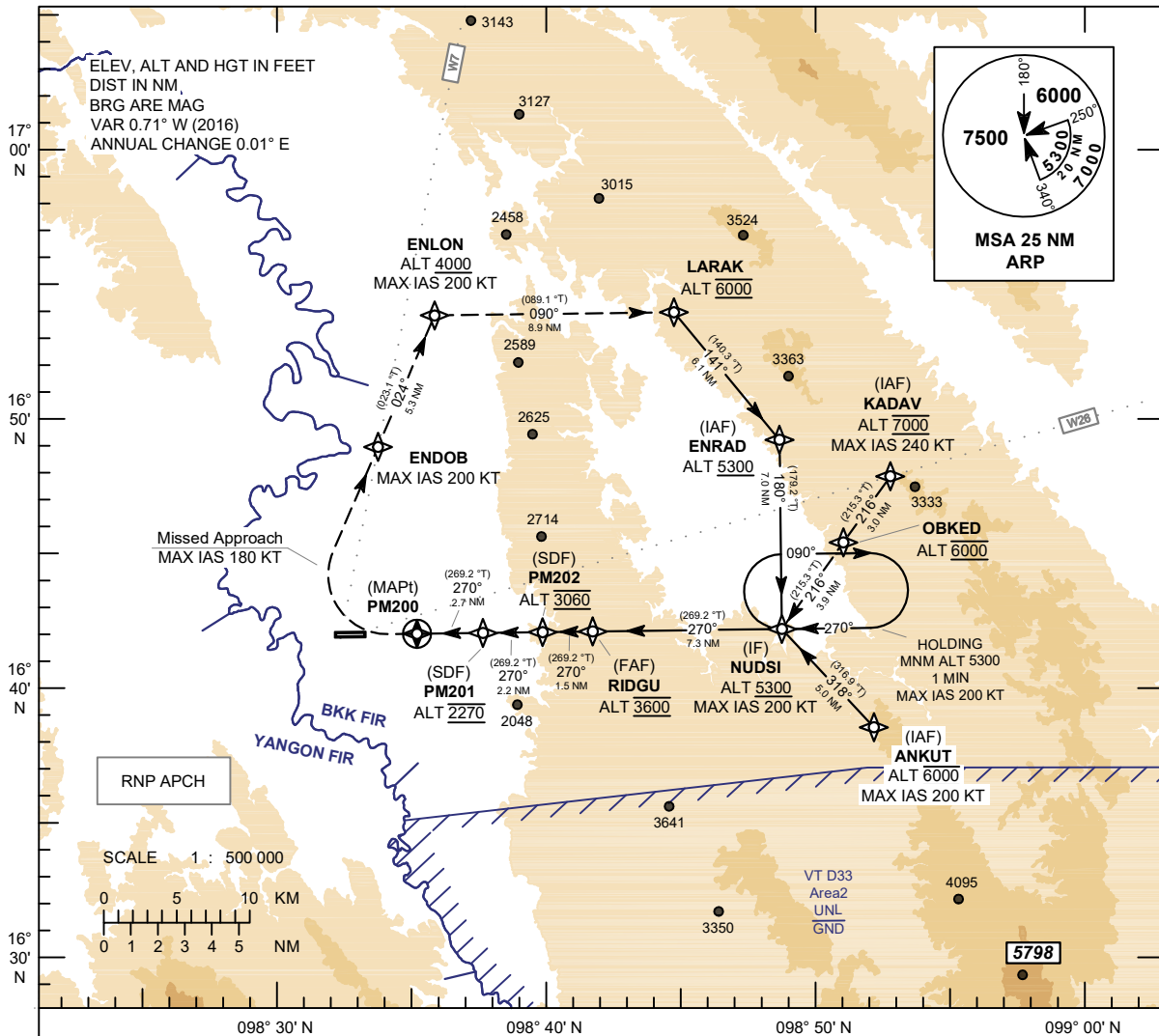
**INSTRUMENT
APPROACH
CHART - ICAO**

**AERODROME ELEV 693 FT
HEIGHTS RELATED TO
THR RWY27 - ELEV 681 FT**

APP : 120.65 MHz
TWR : 118.35 , 236.6 MHz
ATIS : 316.0 KHz

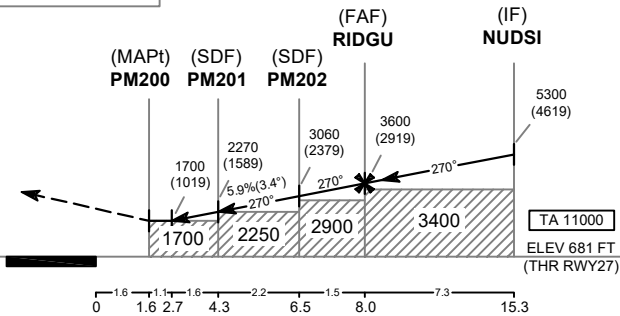
TAK / Mae Sot (VTPM)

RNP RWY27



CAUTION : Missed approach procedure shall be within BKK FIR only

MISSED APPROACH :
No turn before MAPt.
Speed restricted to MAX IAS 180 KT until after turn.
At MAPt, turn right climb to ENDOB, then to ENLON at minimum ALT 4000 ft, then turn right to LARAK at 6000 ft, then turn right to ENRAD at minimum ALT 5300 ft, then proceed to NUDSI at minimum ALT 5300 FT and hold or as directed by ATC.



CHANGE: ENDOB SPEED RESTRICTION ADDED.

OCA/H	A	B	C	NM to NEXT WPT	2.7 NM	3 NM	4 NM	PM 201	5 NM	6 NM	PM202	7 NM	FAF
LNAV	1700 (1019)			Altitude (Height)	1700 (1019)	1805 (1124)	2165 (1484)	2270 (1589)	2525 (1844)	2880 (2199)	3060 (2379)	3240 (2559)	3600 (2919)
Circling (OCH AAL)	NOT AUTHORIZED			Ground speed	knot			70	90	100	120	140	160
	NOT AUTHORIZED			Rate of descent FAF - MAPt 5.9%	ft/min			418	538	597	717	836	956