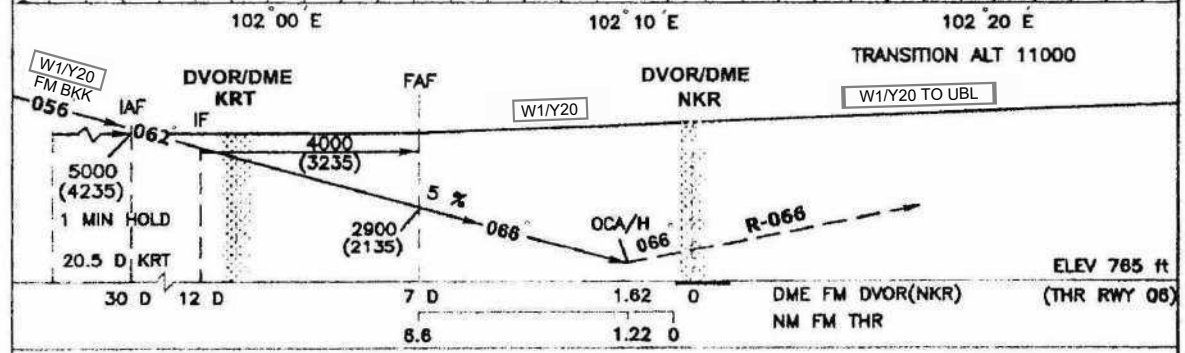
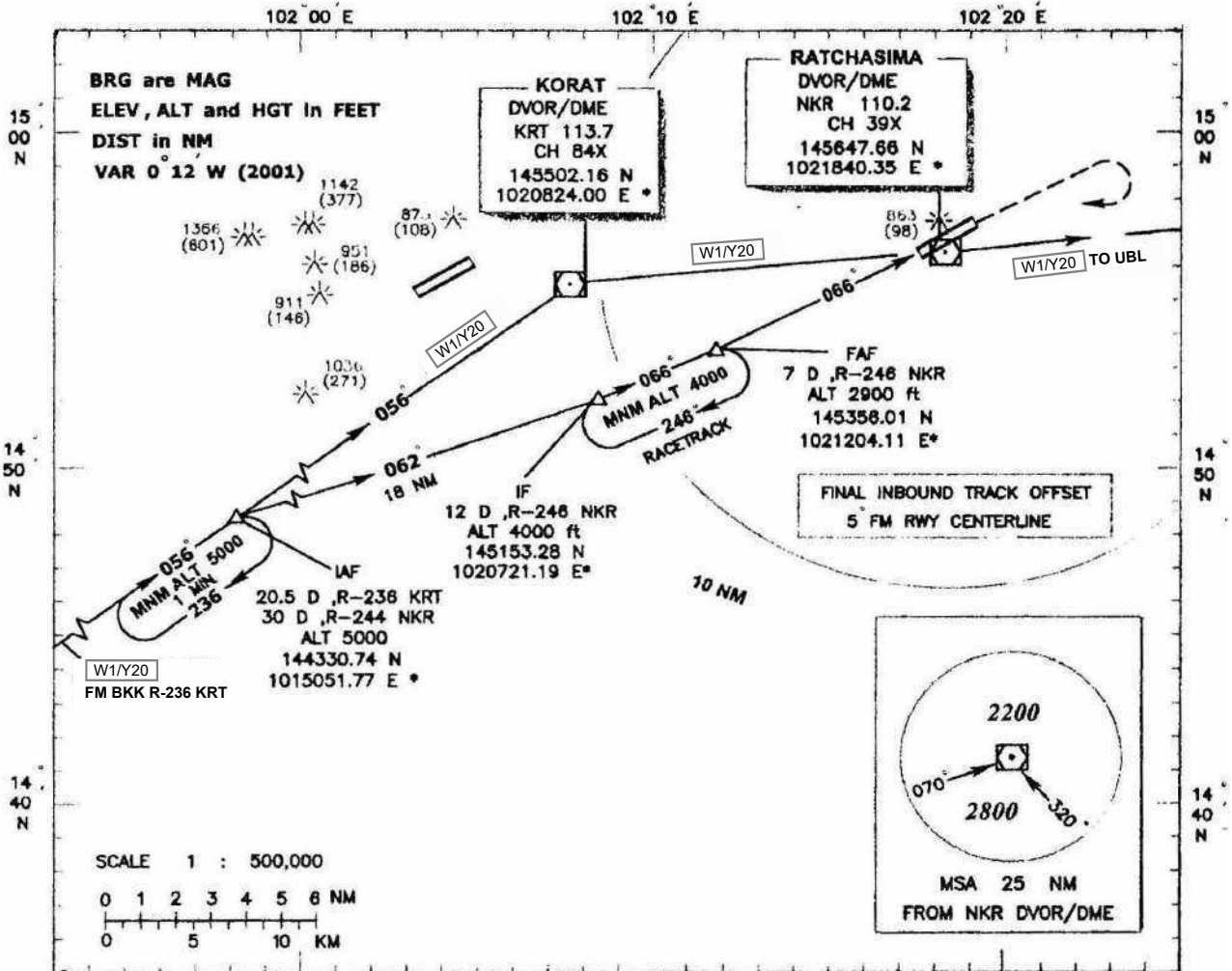


INSTRUMENT AERODROME ELEV 765 ft
 APPROACH HEIGHTS RELATED TO AERODROME ELEV

APP : 123.6
 TWR : 119.8, 236.6
 ATIS : 126.6

NAKHON RATCHASIMA / Ratchasima
 VOR/DME
 RWY 06



MISSED APPROACH : Climb on track 066 to the DVOR/DME then climb on R-066 to 2000(1235)ft, then turn right continuing climb back to FAF 4000(3235) ft and hold.

CHANGE : ROUTE Y20 ADDED.

Remark : Circling to the right only					Distance	2 D	3 D	4 D	5 D	6 D			
OCA/H	A	B	C	D	Altitude(Height)	1320 (555)	1635 (870)	1950 (1185)	2285 (1500)	2580 (1815)			
Straight-in approach					1200(435)	Gs(kt)	knot	100	120	140	160	180	200
Circling					1400(835)	1500(735)	Rate of descent (ft/min)	525	630	740	845	950	1055