

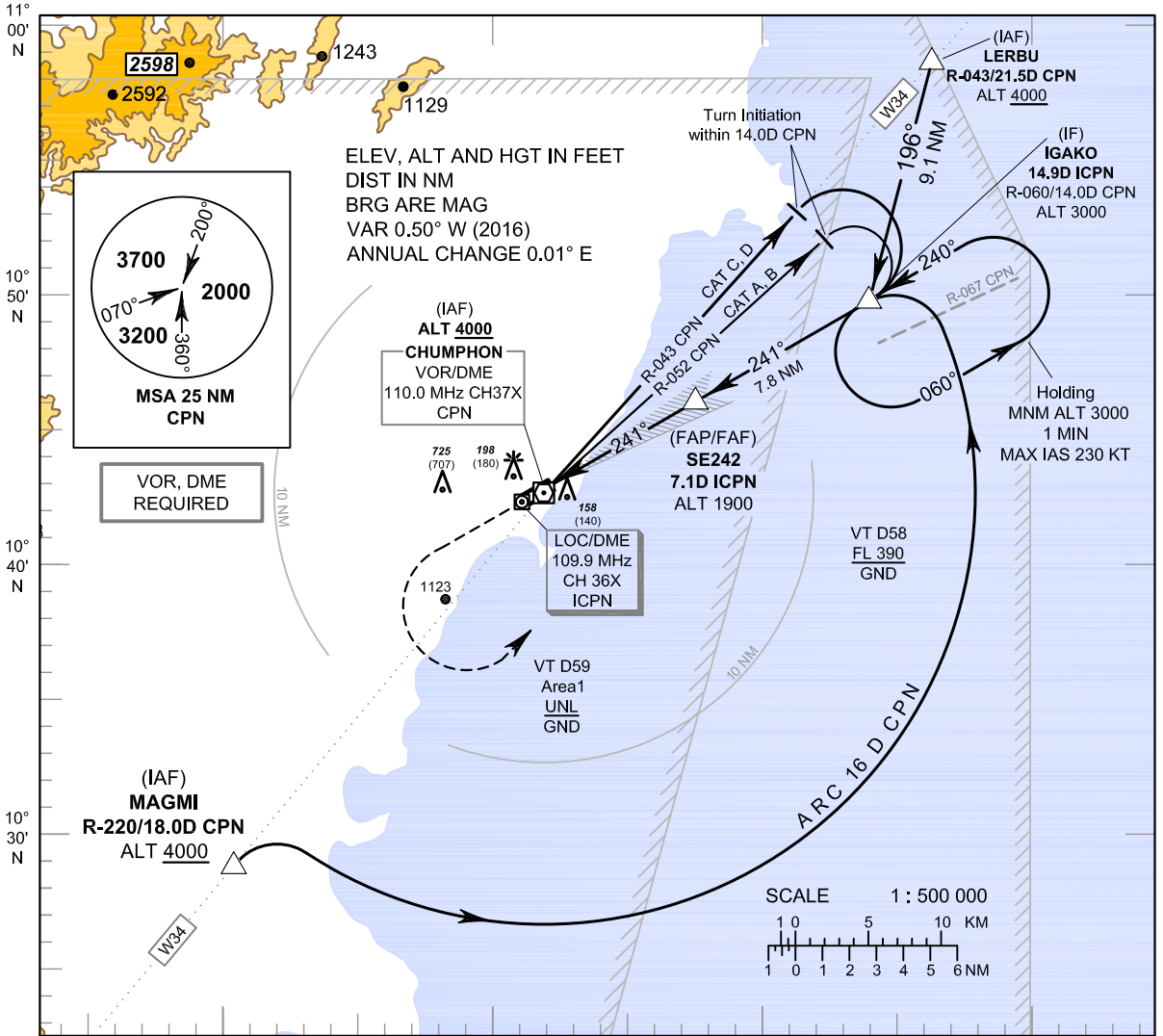
**INSTRUMENT
APPROACH
CHART - ICAO**

AERODROME ELEV 18 FT
HEIGHTS RELATED TO
THR RWY24 - ELEV 18 FT

APP : 122.6
TWR : 122.15 , 236.6
ATIS : 128.45

CHUMPHON / Chumphon (VTSE)

ILS or LOC y RWY24



MISSED APPROACH :

No turn before MAPt.
Climb straight ahead to 1500 FT, then turn left to intercept outbound R-060 CPN VOR, then proceed to IF at 3000 FT and hold or as directed by ATC.

		MAPt (FAP/FAF)				(IF)	
		LOC/DME (LOC only)					
		0	1.3	2.8	7.1	14.9	3000 (2982)
		540 (522)		1900 (1882)		RDH 50 FT	
		540		700		TA 11000	
		ELEV 18 FT					
		DME FM LOC/DME		0		14.9 (THR RWY24)	
		NM FM THR		0		13.6	
OCA/H		A	B	C	D	GS out	Distance to ICPN
Straight - in Approach		390 (372)				2.8 D	3 D
CAT I						4 D	5 D
LOC only		540 (522)				6 D	FAF
Circling (OCH AAL)		1500 (1482)				Altitude (Height)	
						Ground speed	
						Rate of descent (5.2%)	

CHANGE : ATIS FREQUENCY ADDED.