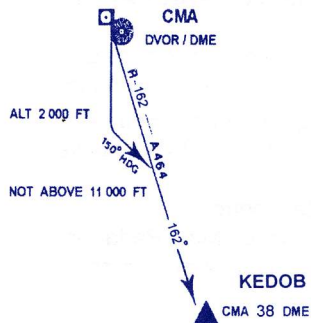


STANDARD INSTRUMENT DEPARTURE RUNWAY 18

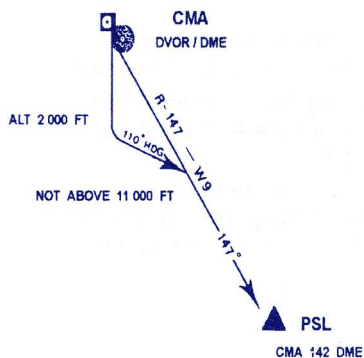
KEDOB ONE ALFA (KEDOB 1 A)

Take off, climb runway heading until 2 000 FT, or above, then turn left heading 150° to intercept and proceed on CMA R-162 not above 11 000 FT.
 Expect radar control.
 Contact Chiang Mai Radar on 129.6, 305.4 MHZ after take off.



PHITSANULOK ONE ALFA (PSL 1 A)

Take off, climb runway heading until 2 000 ft, or above, then turn left heading 110° to intercept and proceed on CMA R-147 not above 11 000 ft. Expect radar control.
 Contact Chiang Mai Radar on 129.6, 305.4 MHz after take-off.



MAE HONG SON ONE ALFA (MHS 1 A)

Take off, climb runway heading until 3 500 ft, or above, then turn right heading 320° to cross CMA R-255 not below 6 500 ft, and intercept and proceed on CMA R-299 not above 11 000 ft.
 Expect radar control.
 Contact Chiang Mai Radar on 129.6, 305.4 MHz after take-off.

