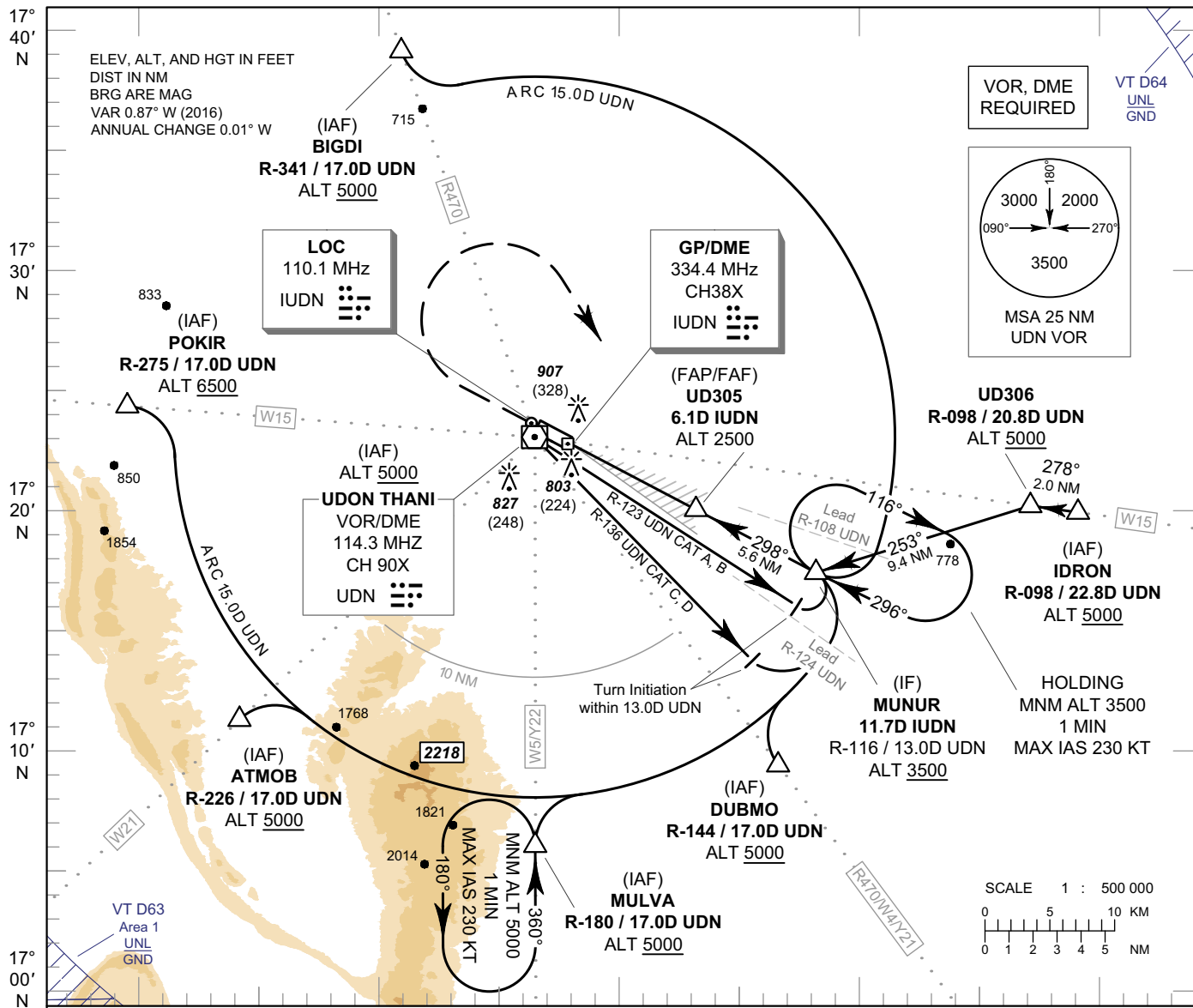


INSTRUMENT APPROACH CHART - ICAO

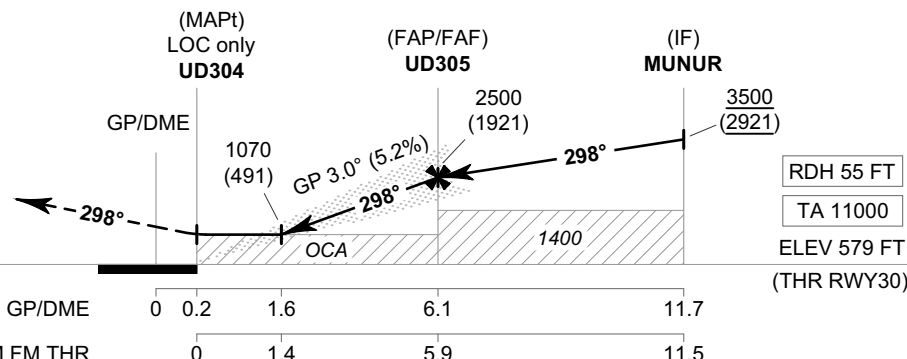
AERODROME ELEV 579 FT
HEIGHTS RELATED TO
THR RWY30 - ELEV 579 FT

APP : 126.2, 265.9
TWR : 122.5, 355.4
GND : 121.9, 275.8
ATIS : 127.6

UDON THANI / Udon Thani (VTUD)
ILS or LOC y RWY30



MISSED APPROACH :
No turn before MAPt (for LOC only).
Climb straight ahead to 1500 FT,
then turn right to intercept outbound
R-116 UDN VOR, then proceed to
MUNUR at minimum 3500 FT and
hold or as directed by ATC.



CHANGE: POKIR ALTITUDE.

OCA/H		A	B	C	D	GS OUT	Distance (IUDN)	1.6D	2D	3D	4D	5D	6D	FAF
Straight - in Approach	CAT I	860 (281)	870 (291)	880 (301)	890 (311)		Altitude (Height)	1070 (491)	1200 (621)	1515 (936)	1830 (1251)	2145 (1566)	2460 (1881)	2500 (1921)
		LOC only				1070 (491)								
Circling* (OCH AAL)		1300 (721)				Rate of Descent 5.2%	ft/min	369	474	527	632	737	843	

*FOR CIRCLING RESTRICTIONS SEE VERSO