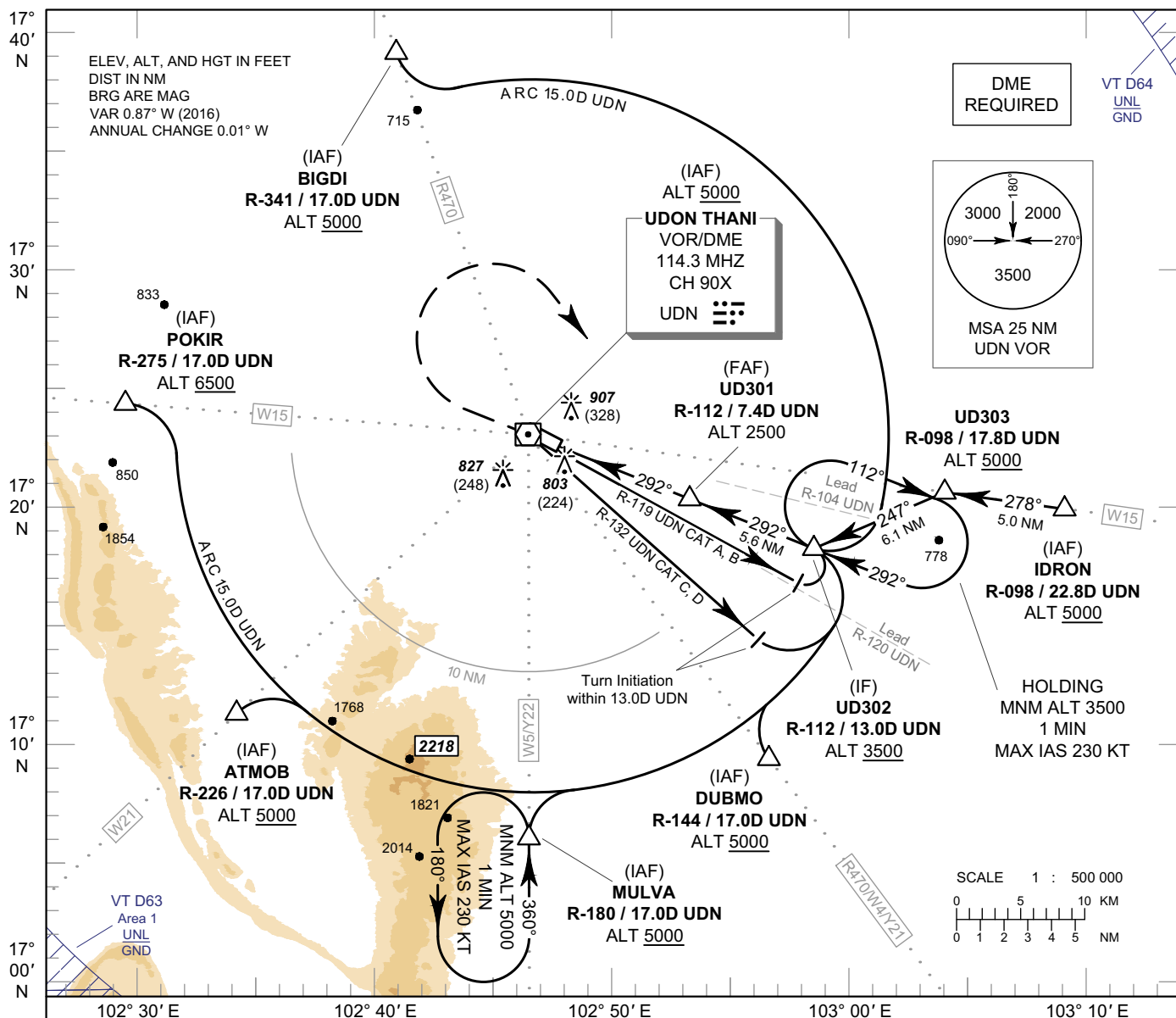


**INSTRUMENT
APPROACH
CHART - ICAO**

**AERODROME ELEV 579 FT
HEIGHTS RELATED TO
AERODROME ELEV**

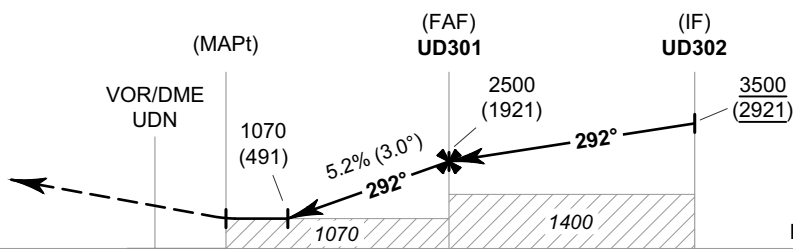
APP : 126.2, 265.9
TWR : 122.5, 355.4
GND : 121.9, 275.8
ATIS : 127.6

**UDON THANI / Udon Thani (VTUD)
VOR RWY30**



MISSED APPROACH :
No turn before MAPt.

Climb straight ahead to 1500 FT, then turn right to intercept outbound R-112 UDN VOR, then proceed to UD302 at minimum 3500 FT and hold or as directed by ATC.



DME FM VOR/DME	0	1.5	2.9	7.4	13.0
NM FM THR	0	1.4	5.9	11.5	

CHANGE: POKIR ALTITUDE.

OCA/H	A	B	C	D	Distance (UDN)	2.9D	3D	4D	5D	6D	7D	FAF	
Straight - in Approach	1070 (491)				Altitude (Height)	1070 (491)	1100 (521)	1420 (841)	1735 (1156)	2050 (1471)	2365 (1786)	2500 (1921)	
Circling* (OCH AAL)	1300 (721)				Ground Speed	knot	70	90	100	120	140	160	
*FOR CIRCLING RESTRICTIONS SEE VERSO					Rate of Descent	5.2%	ft/min	369	474	527	632	737	843