

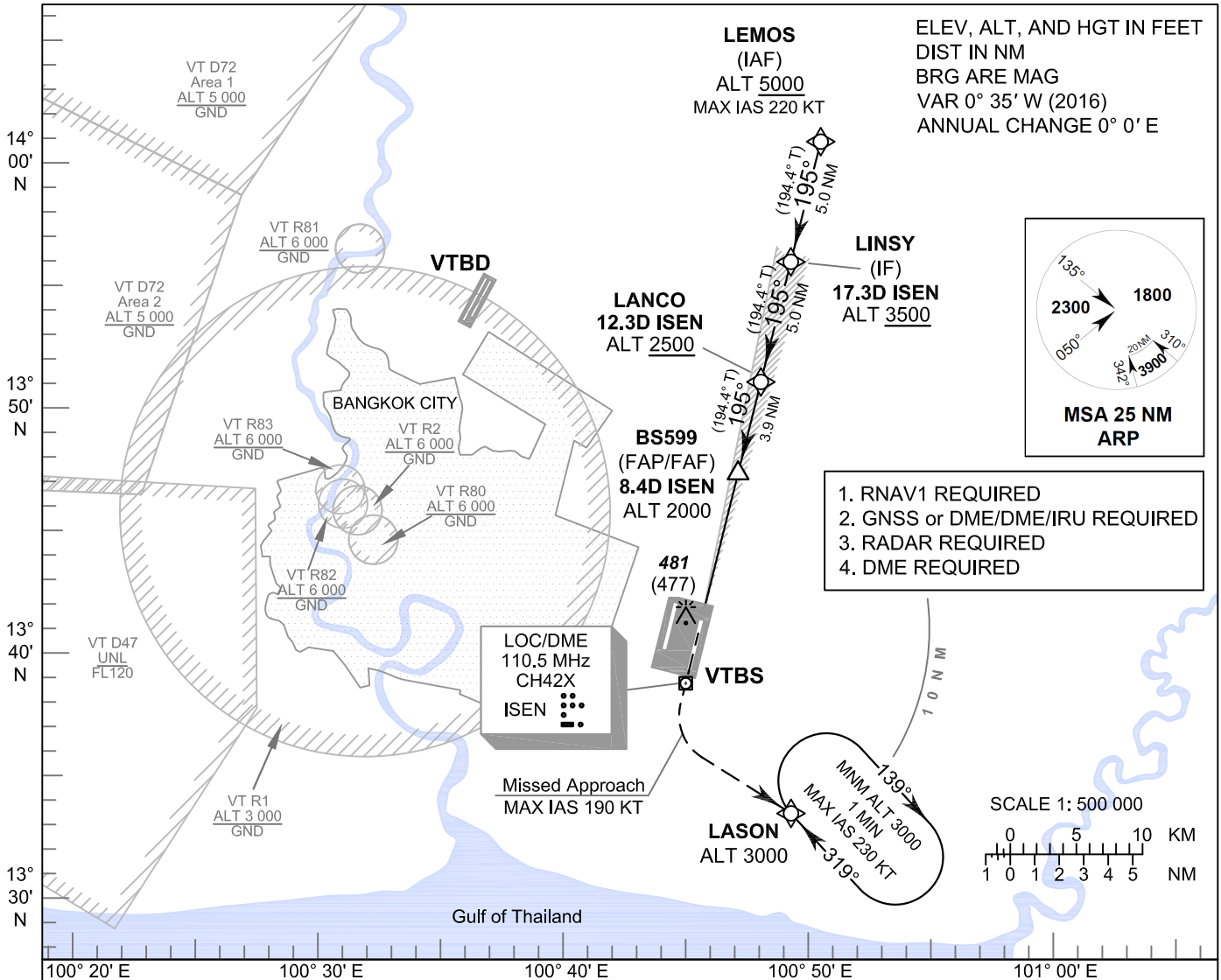
**INSTRUMENT
APPROACH
CHART - ICAO**

**AERODROME ELEV 4 FT
HEIGHTS RELATED TO
THR RWY19L - ELEV 4 FT**

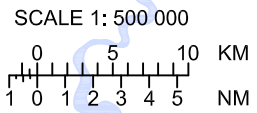
| | |
|----------|-----------------|
| APP | : 119.1, 262.5 |
| | : 120.3, 262.5 |
| | : 133.4, 262.5 |
| | : 122.35, 262.5 |
| | : 124.35, 262.5 |
| | : 125.2, 262.5 |
| ARR | : 121.1 |
| | : 126.3 |
| TWR | : 118.2, 274.5 |
| | : 119.0 |
| ARR ATIS | : 133.6, 278.6 |

BANGKOK / Suvarnabhumi Intl (VTBS)

**ILS or LOC z RWY19L
CAT II**

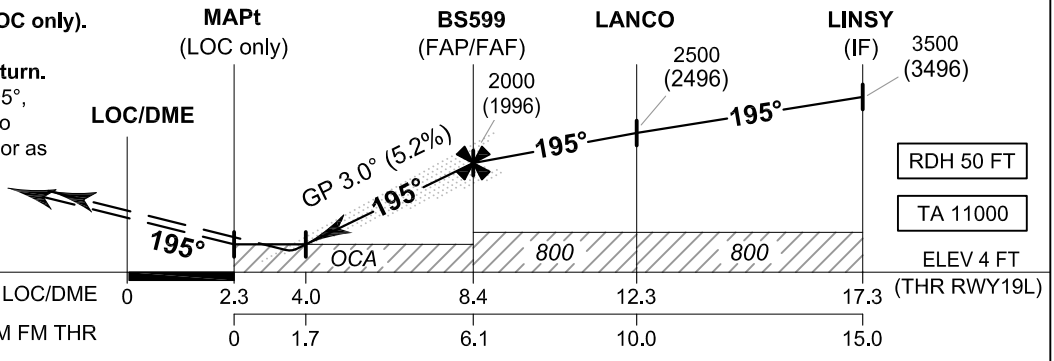


1. RNAV1 REQUIRED
2. GNSS or DME/DME/IRU REQUIRED
3. RADAR REQUIRED
4. DME REQUIRED



MISSED APPROACH:

**No turn before MAPt (for LOC only).
Speed restricted to
MAX IAS 190 KT until after turn.**
Climb to 1000 FT on track 195°, then climbing left turn direct to LASON at 3000 FT and hold or as directed by ATC.
(If unable to reach 3000 FT at LASON, continue climb in the holding pattern.)



CHANGE: MSA. AD ELEV. THR ELEV.

| OCA/H | | A | B | C | D | GS OUT | Distance (ISEN) | 4 D | 5 D | 6 D | 7 D | 8 D | FAF | |
|----------------------|--------|-----------|-----------|---|---|-----------|-----------------|-----------|-------------|-------------|-------------|-------------|-------------|-----|
| Straight-in Approach | CAT I | 205 (201) | | | | | 590 (586) | 590 (586) | 910 (906) | 1225 (1221) | 1540 (1536) | 1855 (1851) | 2000 (1996) | |
| | CAT II | 105 (101) | | | | 590 (586) | 590 (586) | 910 (906) | 1225 (1221) | 1540 (1536) | 1855 (1851) | 2000 (1996) | | |
| LOC only | | 590 (586) | | | | 590 (586) | 590 (586) | 70 | 90 | 100 | 120 | 140 | 160 | |
| Circling (OCH AAL) | | 800 (796) | 900 (896) | | | 590 (586) | 590 (586) | ft/min | 369 | 474 | 527 | 632 | 737 | 843 |