

**STANDARD DEPARTURE CHART-
INSTRUMENT (SID) - ICAO**

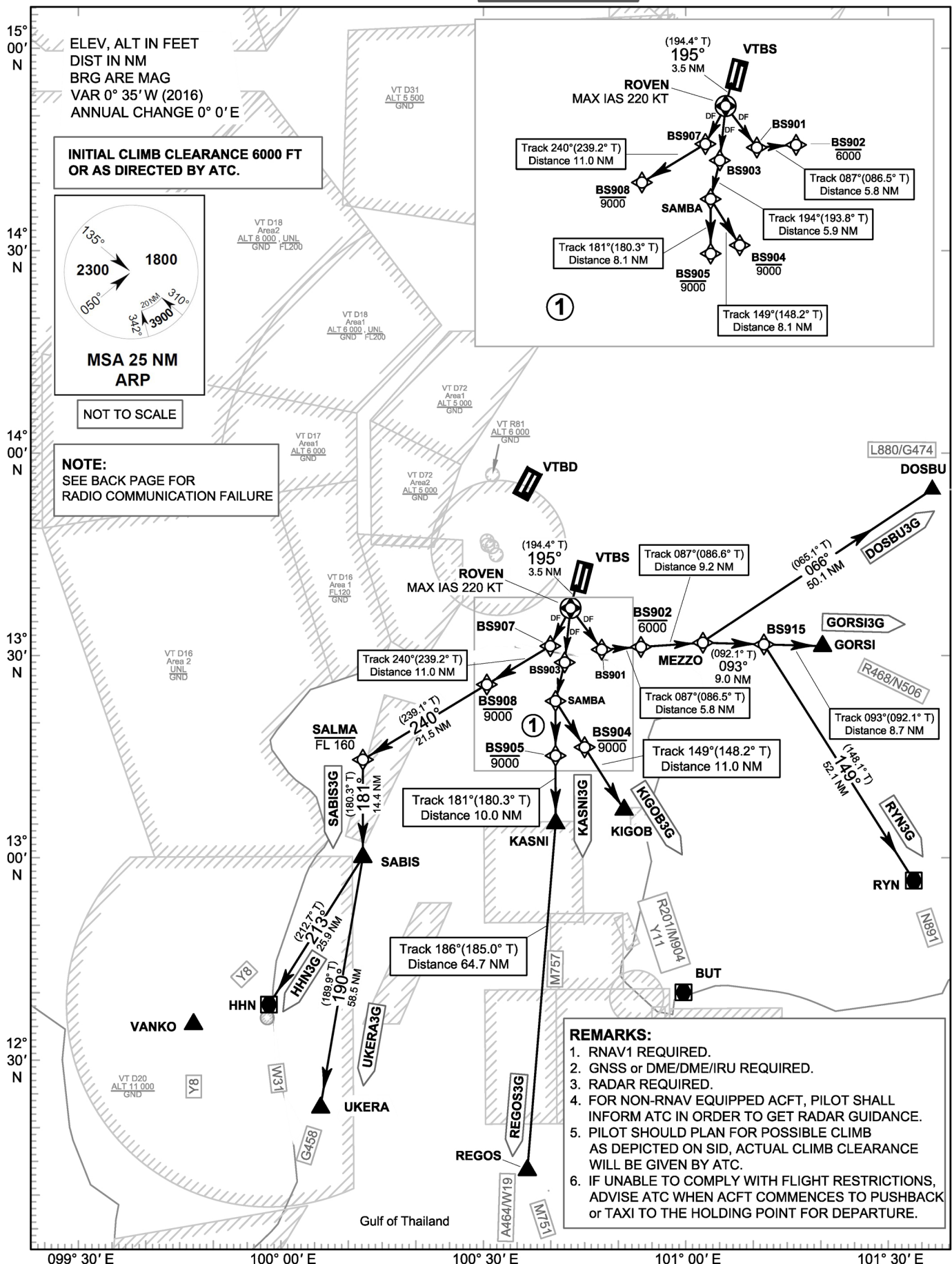
TRANSITION ALTITUDE
11000 FT

SPEED RESTRICTION
MAX IAS 250 KT AT OR
BELOW ALT 10000 FT
UNLESS OTHERWISE
AUTHORIZED BY ATC.

APP : 119.1, 262.5
: 120.3, 262.5
: 133.4, 262.5
: 122.35, 262.5
: 124.35, 262.5
: 125.2, 262.5
ARR : 121.1
: 126.3
TWR : 118.2, 274.5
: 119.0
DEP ATIS : 127.65

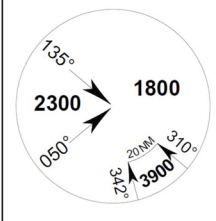
**BANGKOK/Suvarnabhumi Intl (VTBS)
RNAV RWY19R**

DOSBU3G GORSI3G HHN3G
KASNI3G KIGOB3G REGOS3G
RYN3G SABIS3G UKERA3G



ELEV, ALT IN FEET
DIST IN NM
BRG ARE MAG
VAR 0° 35' W (2016)
ANNUAL CHANGE 0° 0' E

**INITIAL CLIMB CLEARANCE 6000 FT
OR AS DIRECTED BY ATC.**



**MSA 25 NM
ARP**

NOT TO SCALE

NOTE:
SEE BACK PAGE FOR
RADIO COMMUNICATION FAILURE

- REMARKS:**
1. RNAV1 REQUIRED.
 2. GNSS or DME/DME/IRU REQUIRED.
 3. RADAR REQUIRED.
 4. FOR NON-RNAV EQUIPPED ACFT, PILOT SHALL INFORM ATC IN ORDER TO GET RADAR GUIDANCE.
 5. PILOT SHOULD PLAN FOR POSSIBLE CLIMB AS DEPICTED ON SID, ACTUAL CLIMB CLEARANCE WILL BE GIVEN BY ATC.
 6. IF UNABLE TO COMPLY WITH FLIGHT RESTRICTIONS, ADVISE ATC WHEN ACFT COMMENCES TO PUSHBACK or TAXI TO THE HOLDING POINT FOR DEPARTURE.

CHANGE: MSA.