

**STANDARD DEPARTURE CHART-  
INSTRUMENT (SID) - ICAO**

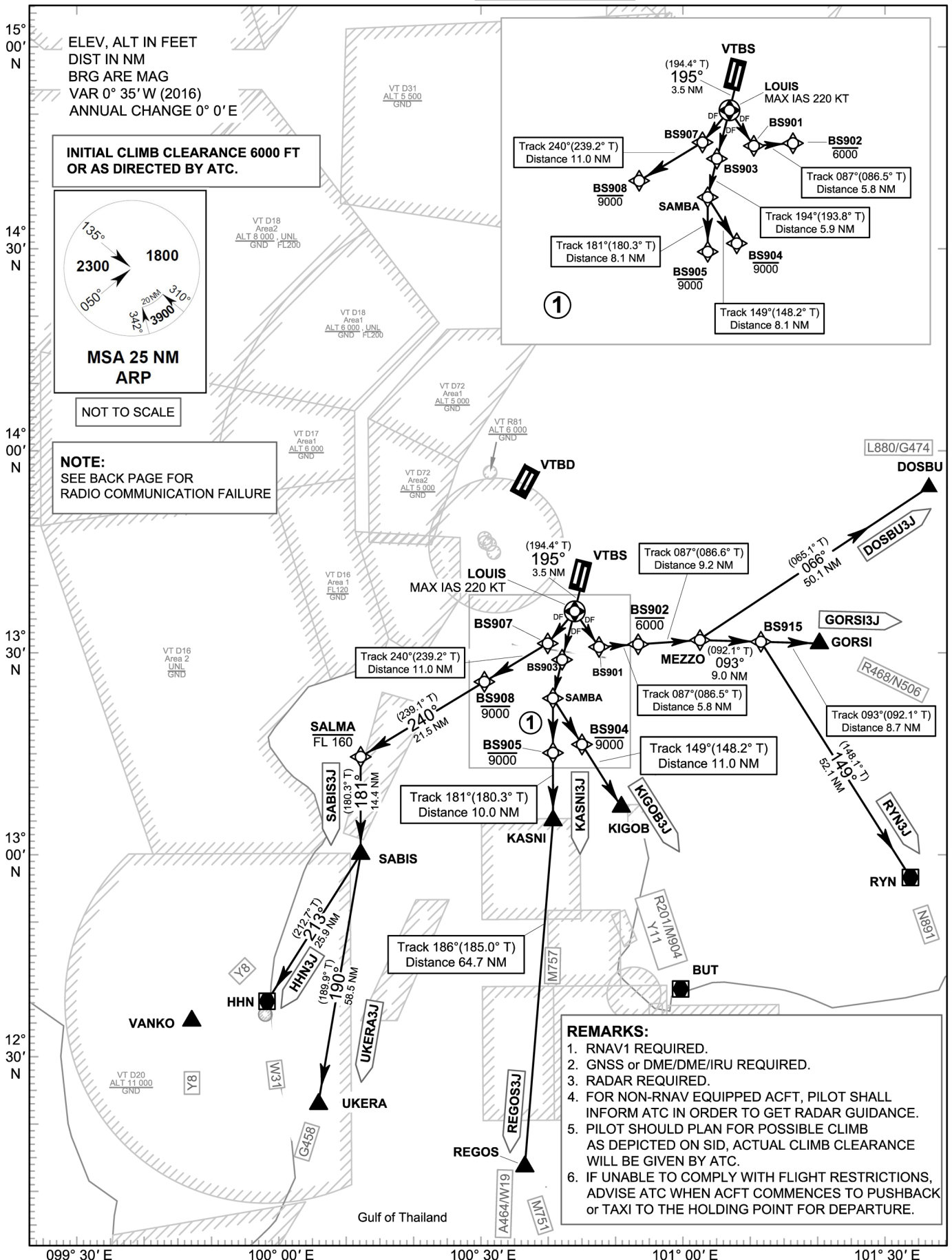
TRANSITION ALTITUDE  
11000 FT

**SPEED RESTRICTION**  
MAX IAS 250 KT AT OR  
BELOW ALT 10000 FT  
UNLESS OTHERWISE  
AUTHORIZED BY ATC.

APP : 119.1, 262.5  
: 120.3, 262.5  
: 133.4, 262.5  
: 122.35, 262.5  
: 124.35, 262.5  
: 125.2, 262.5  
ARR : 121.1  
: 126.3  
TWR : 118.2, 274.5  
: 119.0  
DEP ATIS : 127.65

**BANGKOK/Suvarnabhumi Intl (VTBS)  
RNAV RWY19L**

DOSBU3J GORSI3J HHN3J  
KASNI3J KIGOB3J REGOS3J  
RYN3J SABIS3J UKERA3J



**REMARKS:**

1. RNAV1 REQUIRED.
2. GNSS or DME/DME/IRU REQUIRED.
3. RADAR REQUIRED.
4. FOR NON-RNAV EQUIPPED ACFT, PILOT SHALL INFORM ATC IN ORDER TO GET RADAR GUIDANCE.
5. PILOT SHOULD PLAN FOR POSSIBLE CLIMB AS DEPICTED ON SID, ACTUAL CLIMB CLEARANCE WILL BE GIVEN BY ATC.
6. IF UNABLE TO COMPLY WITH FLIGHT RESTRICTIONS, ADVISE ATC WHEN ACFT COMMENCES TO PUSHBACK or TAXI TO THE HOLDING POINT FOR DEPARTURE.

CHANGE: MSA.