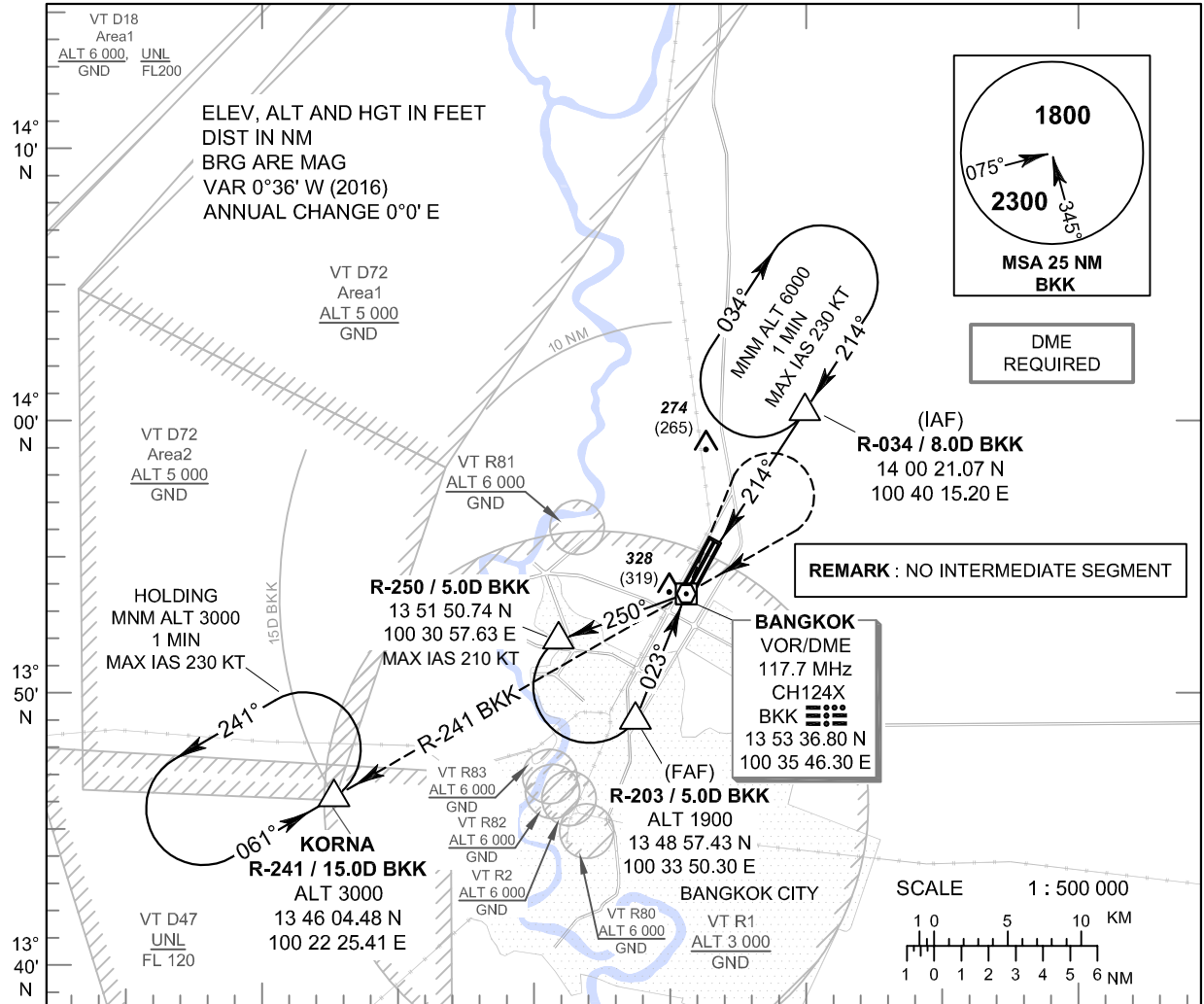


**INSTRUMENT APPROACH CHART - ICAO** **AERODROME ELEV 9 FT**  
**HEIGHTS RELATED TO AERODROME ELEV**

APP	: 119.1, 262.5
	: 119.4, 262.5
	: 120.3, 262.5
	: 133.4, 262.5
	: 122.35, 262.5
	: 124.35, 262.5
	: 125.2, 262.5
DAR	: 133.0, 262.5
TWR	: 118.1, 236.6
ATIS	: 126.4, 344.6

**BANGKOK / Don Mueang Intl (VTBD)**  
**VOR RWY03R**



**CHANGE: BASE TURN SPEED RESTRICTION ADDED.**

CHANGE: BASE TURN SPEED RESTRICTION ADDED.	100° 20' E		100° 30' E		100° 40' E		100° 50' E					
	(FAF)	(MAPt)	VOR/DME BKK		(IAF)	Descent gradient not coincident with PAPI						
	1900 (1891)	3000 (2991)	6000 (5991)		5000 (4991)	<b>MISSED APPROACH :</b> No turn before MAPt. At VOR/DME BKK, climb outbound on R-023 BKK VOR until passing 1500 FT, then turn right to VOR/DME BKK and continue climb on R-241 BKK VOR to 15 DME BKK VOR FIX at 3000 FT and hold or as directed by ATC.						
	TA 11000 ELEV 5 FT (THR RWY03R)	790 (781)	5.5% (3.2°)		0.50							
	5.0	2.2	0	8.0	DME FM VOR/DME							
	5.5	2.7	0.50		NM FM THR 03R							
<b>OCA/H</b>	A	B	C	D	<b>Distance (BKK)</b>	5 DME	4 DME	3 DME	2 DME	0.9 DME		
<b>Straight - in Approach</b>	790 (781)				<b>Altitude (Height)</b>	1900 (1891)	1560 (1551)	1230 (1221)	895 (886)	530 (521)		
					<b>Ground speed</b>	knot	100	120	140	160	180	200
<b>Circling (OCH AAL)</b>	800 (791)		1100 (1091)		<b>FAF-MAPt 5.0 NM</b>	(min:s)	3:00	2:30	2:09	1:53	1:40	1:30
					<b>Rate of descent</b>	(ft/min)	557	668	780	891	1003	1114