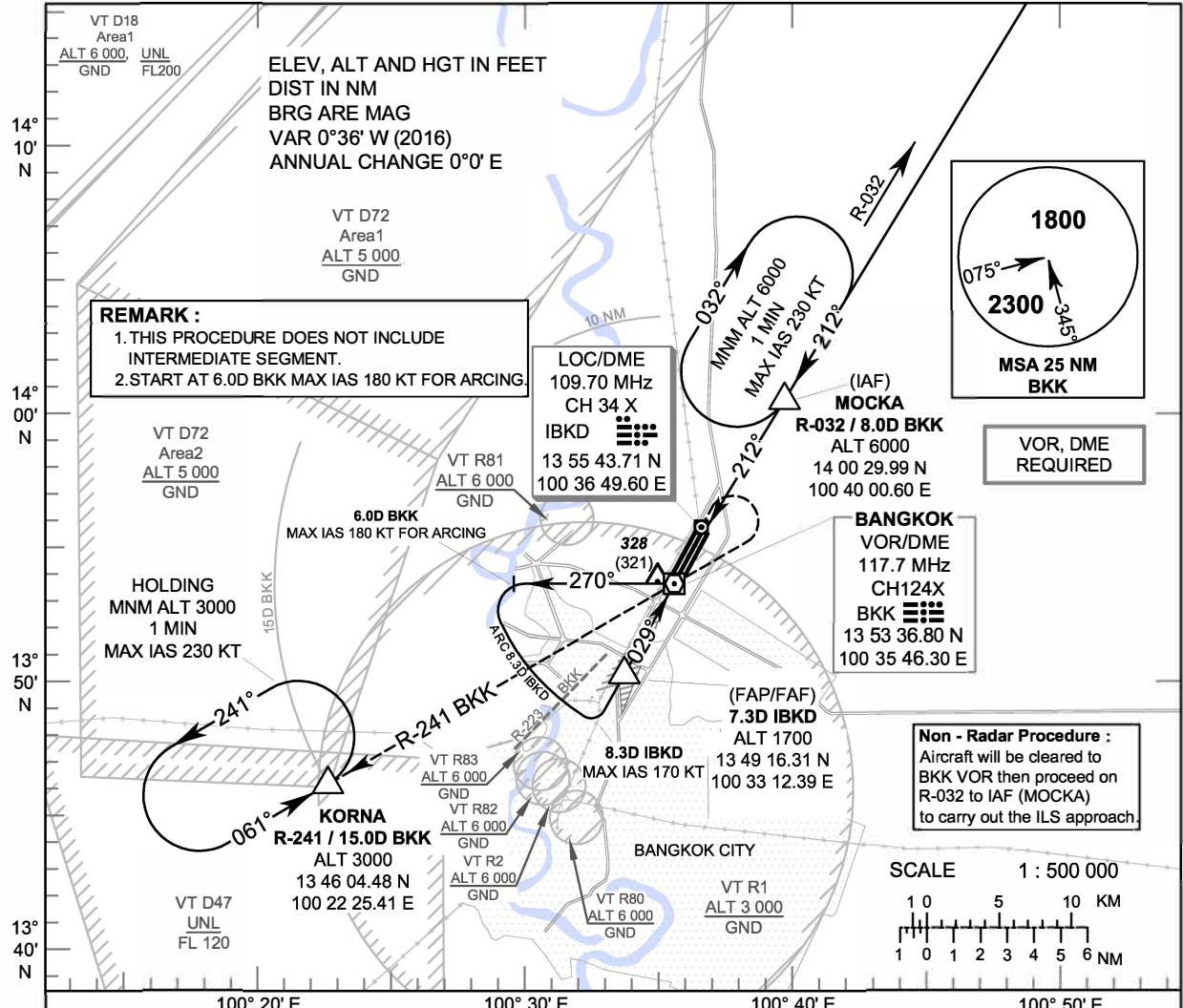


INSTRUMENT APPROACH CHART - ICAO **AERODROME ELEV 9 FT**
HEIGHTS RELATED TO THR RWY03L - ELEV 7 FT

APP	: 119.1, 262.5
	: 119.4, 262.5
	: 120.3, 262.5
	: 133.4, 262.5
	: 122.35, 262.5
	: 124.35, 262.5
	: 125.2, 262.5
DAR	: 133.0, 262.5
TWR	: 118.1, 236.6
ATIS	: 126.4, 344.6

BANGKOK / Don Mueang Intl (VTBD)
ILS or LOC y RWY03L



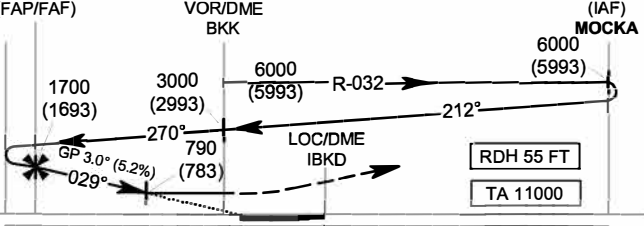
REMARK :
 1. THIS PROCEDURE DOES NOT INCLUDE INTERMEDIATE SEGMENT.
 2. START AT 6.0D BKK MAX IAS 180 KT FOR ARCING.

LOC/DME
 109.70 MHz
 CH 34 X
 IBKD
 13 55 43.71 N
 100 36 49.60 E

BANGKOK
 VOR/DME
 117.7 MHz
 CH124X
 BKK
 13 53 36.80 N
 100 35 46.30 E

Non - Radar Procedure :
 Aircraft will be cleared to BKK VOR then proceed on R-032 to IAF (MOCKA) to carry out the ILS approach.

MISSED APPROACH :
No turn before MAPt (for LOC only).
 Climb on track 029° direct to the LOC/DME then climb outbound on R-029 BKK VOR to 1500 FT then turn right to VOR/DME BKK and continue climb on R-241 BKK VOR to 15 DME BKK VOR FIX at 3000 FT and hold or as directed by ATC.
ELEV 7 FT (THR RWY03L)



DME FM VOR/DME	6.0	5.0	2.1	0	8.0
DME FM LOC/DME		7.4	4.5	2.2	0
NM FM THR 03L		5.2	2.3	0	

CHANGE: APP FREQUENCY.

OCA/H	A	B	C	D	Distance (IBKD)	7 DME	6 DME	5 DME	4 DME	3.4 DME			
Straight - in Approach	CAT I	220 (213)			Altitude (Height)		1605 (1598)	1290 (1283)	975 (968)	660 (653)	470 (463)		
					Ground speed		knot	100	120	140	160	180	200
LOC only	790 (783)			FAF-MAPt 3.9 NM		(min:s)	2:20	1:57	1:40	1:28	1:18	1:10	
Circling (OCH AAL)	800 (791)	1100 (1091)			Rate of descent		(ft/min)	530	637	743	849	955	1061