

**STANDARD ARRIVAL CHART -
INSTRUMENT (STAR) - ICAO**

TRANSITION ALTITUDE
11000 FT

APP : 126.2, 265.9
TWR : 122.5, 355.4
GND : 121.9, 275.8
ATIS : 127.6

**UDON THANI / Udon Thani (VTUD)
RNAV RWY30**

ANPUS1C ELNET1C ESGIB1C
GULNO1C MUGNO1C POVEX1C SURGU1C

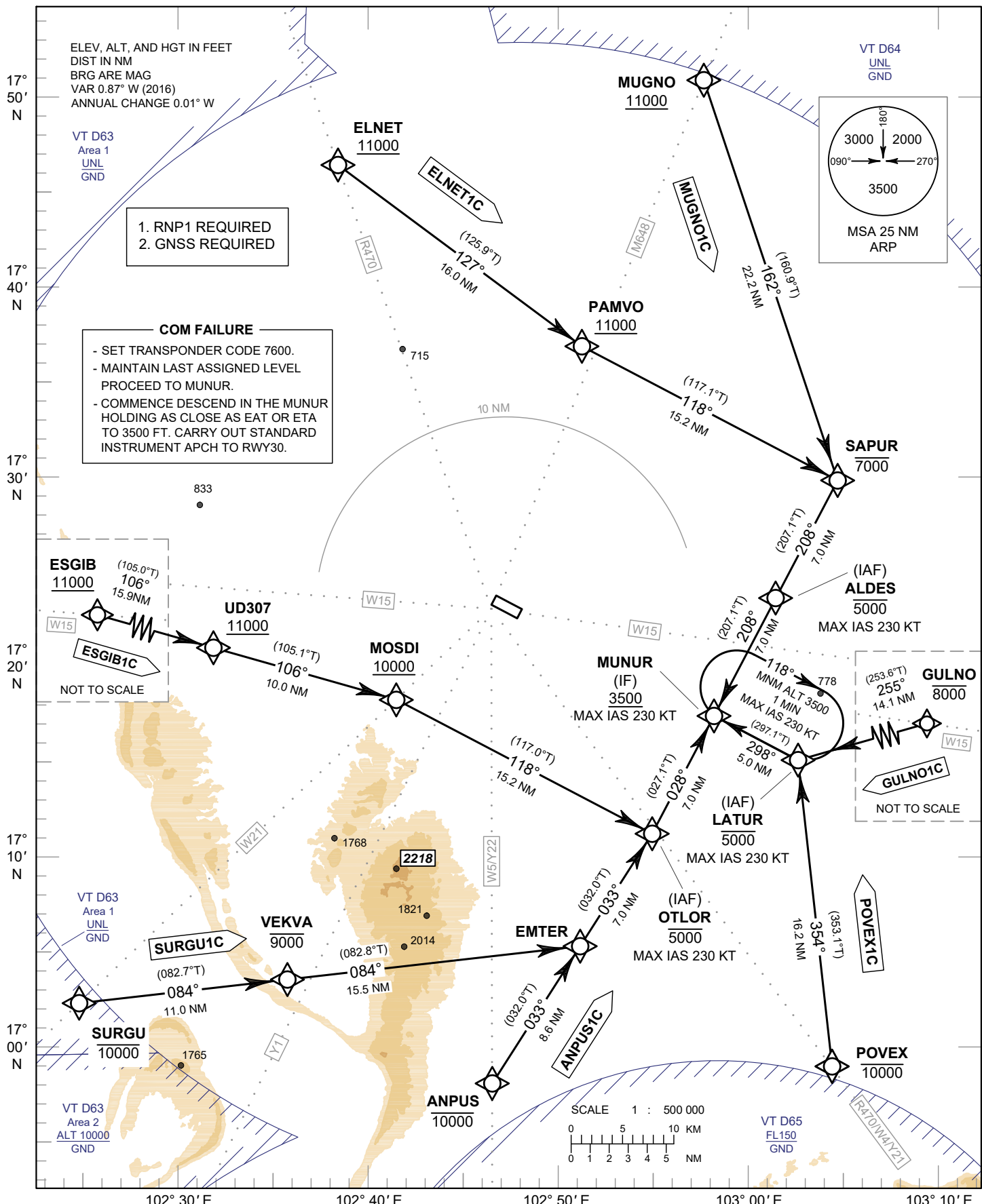
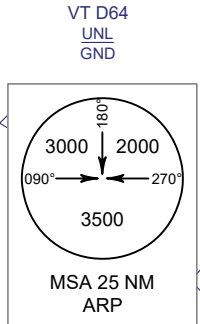
ELEV, ALT, AND HGT IN FEET
DIST IN NM
BRG ARE MAG
VAR 0.87° W (2016)
ANNUAL CHANGE 0.01° W

VT D63
Area 1
UNL
GND

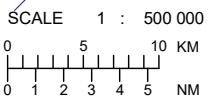
1. RNP1 REQUIRED
2. GNSS REQUIRED

COM FAILURE

- SET TRANSPONDER CODE 7600.
- MAINTAIN LAST ASSIGNED LEVEL
- PROCEED TO MUNUR.
- COMMENCE DESCEND IN THE MUNUR HOLDING AS CLOSE AS EAT OR ETA TO 3500 FT. CARRY OUT STANDARD INSTRUMENT APCH TO RWY30.



CHANGE: ROUTE Y21, Y22 ADDED.



VT D65
FL150
GND