

STANDARD INSTRUMENT DEPARTURE CHART
(SID) - ICAO

UBON RATCHATANI / Ubon (VTUU)

RWY 05

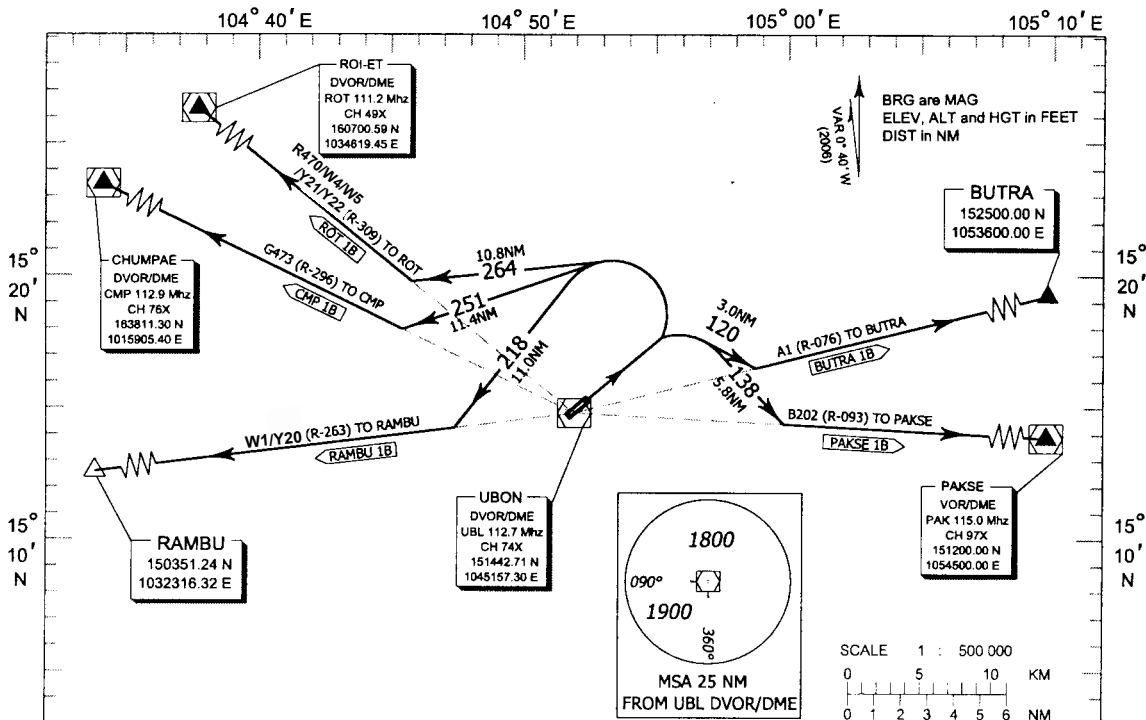
APP : 123.5 , 257.8

RAMBU 1B, ROT 1B

TWR : 119.9 , 274.5

CMP 1B, BUTRA 1B

PAKSE 1B



COMMUNICATION FAILURE PROCEDURE

- Squawk A7600
- Comply with last assigned level until next reporting point then climb to flight plan cruising level.

Warning

- No Turn before Departure End of Runway
- Procedure Design Gradient = 3.3 %
- Max IAS 230 kts for turning after departure

RAMBU ONE BRAVO : AFTER DEPARTURE CLIMB ON RWY HEADING UNTIL 1200FT OR ABOVE THEN TURN LEFT HEADING 218 TO INTERCEPT AND PROCEED ON R-263 UBL TO RAMBU (RAMBU 1B)

CHUMPAE ONE BRAVO : AFTER DEPARTURE CLIMB ON RWY HEADING UNTIL 1200FT OR ABOVE THEN TURN LEFT HEADING 251 TO INTERCEPT AND PROCEED ON R-296 UBL TO CHUMPAE DVOR/DME (CMP 1B)

ROIET ONE BRAVO : AFTER DEPARTURE CLIMB ON RWY HEADING UNTIL 1200FT OR ABOVE THEN TURN LEFT HEADING 264 TO INTERCEPT AND PROCEED ON R-309 UBL TO ROIET DVOR/DME (ROT 1B)

BUTRA ONE BRAVO : AFTER DEPARTURE CLIMB ON RWY HEADING UNTIL 1400FT OR ABOVE THEN TURN RIGHT HEADING 120 TO INTERCEPT AND PROCEED ON R-076 UBL TO BUTRA (BUTRA 1B)

PAKSE ONE BRAVO : AFTER DEPARTURE CLIMB ON RWY HEADING UNTIL 1400FT OR ABOVE THEN TURN RIGHT HEADING 138 TO INTERCEPT AND PROCEED ON R-093 TO PAKSE VOR/DME (PAKSE 1B)

CHANGE:ROUTE Y20, Y21, Y22 ADDED.