

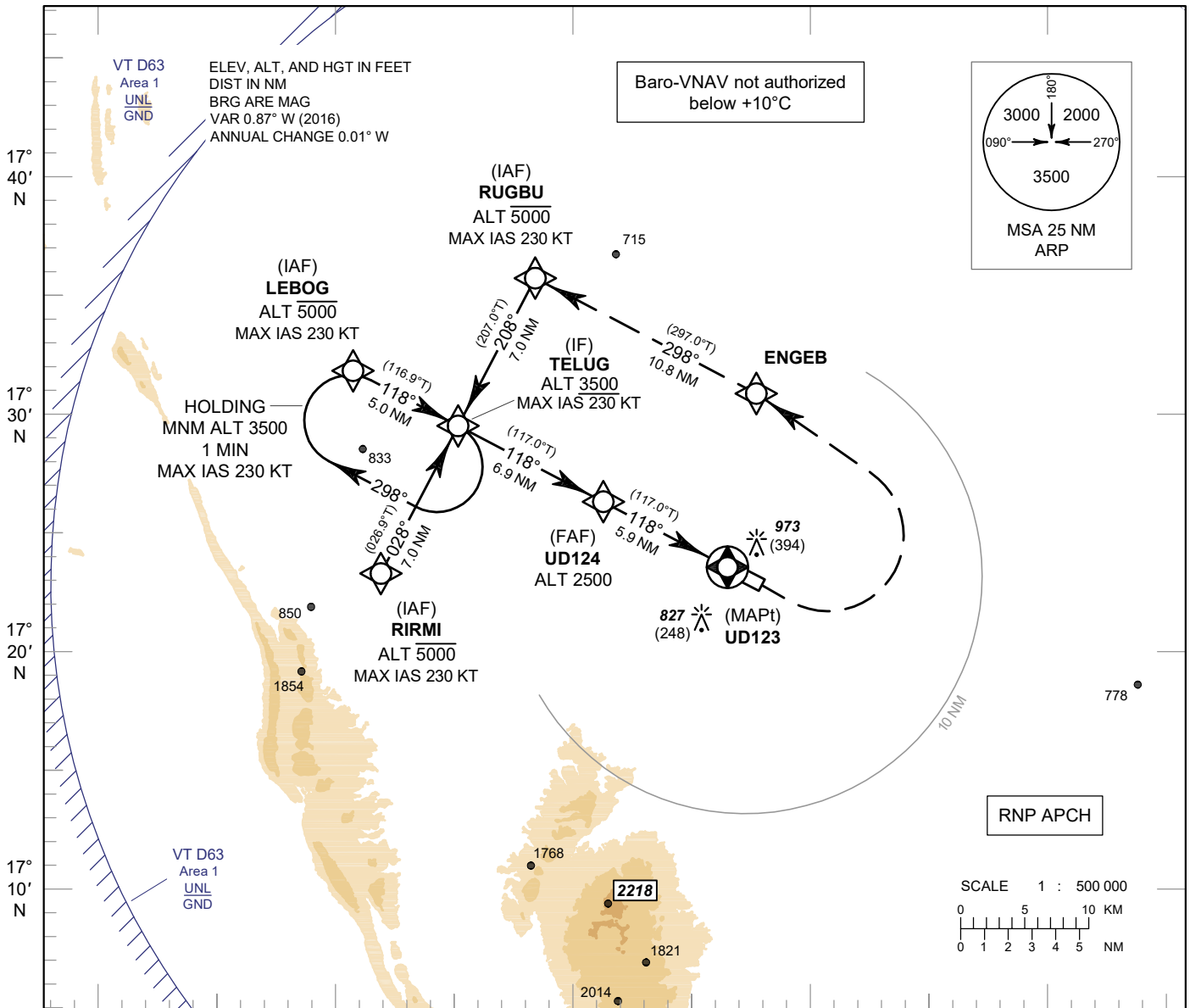
**INSTRUMENT
APPROACH
CHART - ICAO**

AERODROME ELEV 579 FT
HEIGHTS RELATED TO
THR RWY12 - ELEV 579 FT

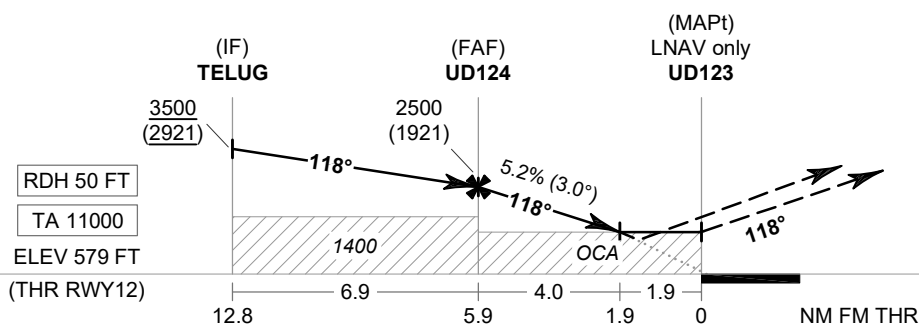
APP : 126.2, 265.9
TWR : 122.5, 355.4
GND : 121.9, 275.8
ATIS : 127.6

UDON THANI / Udon Thani (VTUD)

RNP RWY12



102° 20' E 102° 30' E 102° 40' E 102° 50' E 103° 00' E



MISSED APPROACH :
No turn before MAPt.
Climb on track 118° to 1500 FT, then turn left direct to ENGEB. continue to RUGBU then proceed to TELUG at minimum 3500 FT and hold or as directed by ATC.

CHANGE : REVISED CHART.

OCA/H	A	B	C	D	NM to NEXT WPT	FAF	5 NM	4 NM	3 NM	2 NM	1.9 NM	
LNAV/VNAV	990 (411)				Altitude (Height)	2500 (1921)	2210 (1631)	1895 (1316)	1575 (996)	1260 (681)	1230 (651)	
LNAV	1230 (651)				Ground Speed	knot	70	90	100	120	140	160
Circling* (OCH AAL)	1300 (721)				Rate of Descent FAF-MAPt 5.2%	ft/min	369	474	527	632	737	843
*FOR CIRCLING RESTRICTIONS SEE VERSO												