

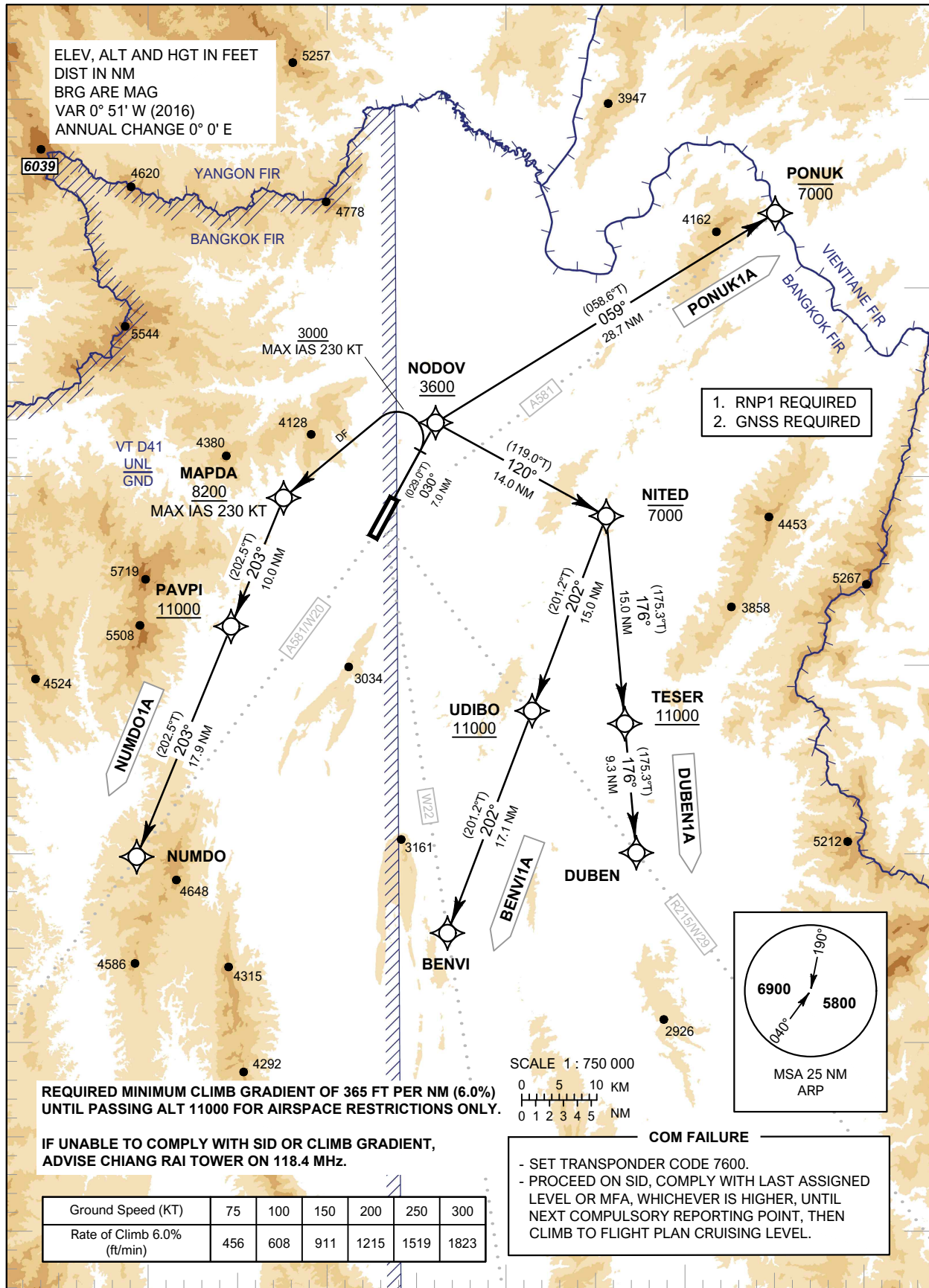
**STANDARD DEPARTURE CHART -
INSTRUMENT (SID) - ICAO**

TRANSITION ALTITUDE
11000 FT

APP : 120.05 , 257.8
TWR : 118.4 , 236.6
ATIS : 127.85

**CHIANG RAI /
Mae Fah Luang-Chiang Rai Intl (VTCT)
RNAV RWY03**

BENV11A DUBEN11A NUMDO11A PONUK11A



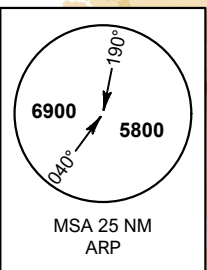
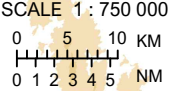
ELEV, ALT AND HGT IN FEET
DIST IN NM
BRG ARE MAG
VAR 0° 51' W (2016)
ANNUAL CHANGE 0° 0' E

1. RNP1 REQUIRED
2. GNSS REQUIRED

**REQUIRED MINIMUM CLIMB GRADIENT OF 365 FT PER NM (6.0%)
UNTIL PASSING ALT 11000 FOR AIRSPACE RESTRICTIONS ONLY.**

**IF UNABLE TO COMPLY WITH SID OR CLIMB GRADIENT,
ADVISE CHIANG RAI TOWER ON 118.4 MHZ.**

Ground Speed (KT)	75	100	150	200	250	300
Rate of Climb 6.0% (ft/min)	456	608	911	1215	1519	1823



COM FAILURE

- SET TRANSPONDER CODE 7600.
- PROCEED ON SID, COMPLY WITH LAST ASSIGNED LEVEL OR MFA, WHICHEVER IS HIGHER, UNTIL NEXT COMPULSORY REPORTING POINT, THEN CLIMB TO FLIGHT PLAN CRUISING LEVEL.

CHANGE: NEW CHART.