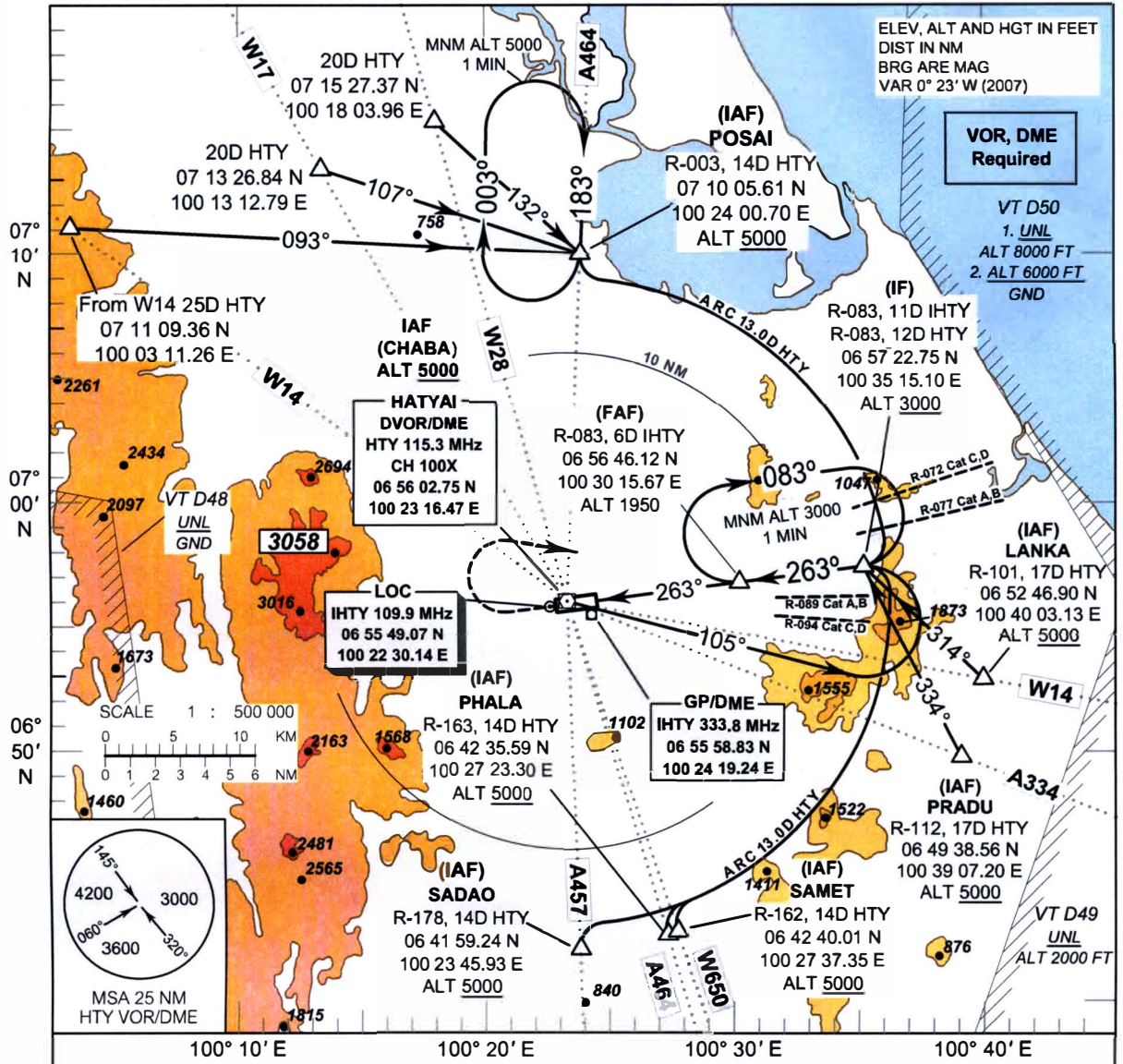


INSTRUMENT AERODROME ELEV 90 FT
APPROACH HEIGHTS RELATED TO
CHART - ICAO THR RWY26 - ELEV 58 FT

APP : 126.7 , 301.5
 TWR : 118.1 , 275.8
 GND : 121.9 , 257.8
 ATIS : 128.8

SONGKHLA / Hat Yai INTL (VTSS)

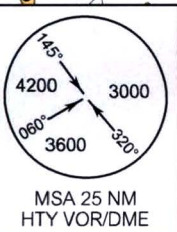
ILS or LOC RWY 26



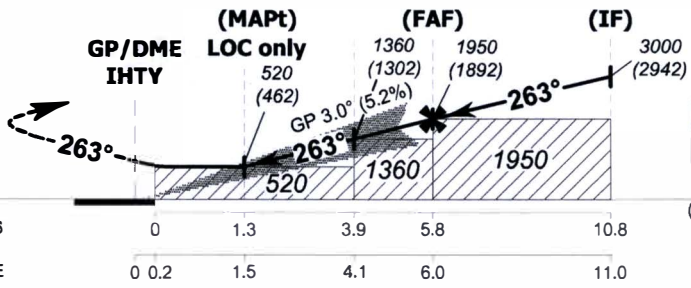
ELEV, ALT AND HGT IN FEET
 DIST IN NM
 BRG ARE MAG
 VAR 0° 23' W (2007)

VOR, DME Required

VT D50
 1. UNL
 ALT 8000 FT
 2. ALT 6000 FT
 GND



MISSED APPROACH :
 Climb straight ahead to 600 FT
 then turn right and continue climb
 to 3000 FT and hold at FAF
 or as directed by ATC.



RDH 55 FT
 TA 11000
 ELEV 58 FT
 (THR RWY 26)

CHANGE : APP FREQUENCIES, TWR FREQUENCIES, ADDED GND FREQUENCIES.

OCA/H		A	B	C	D	Distance (IHTY)	2D	3D	4D	5D	FAF		
Straight - in approach	CAT I	230	240	250	260	Altitude (Height)	680	1000	1315	1630	1950		
		(172)	(182)	(192)	(202)		(622)	(942)	(1257)	(1572)	(1892)		
LOC Only		520 (462)				Ground speed (GS)	knot	70	90	100	120	140	160
Circling (OCH AAL)		550	680	780	780		Rate of descent (ft/min)	369	474	527	632	737	843
		(460)	(590)	(690)	(690)								