

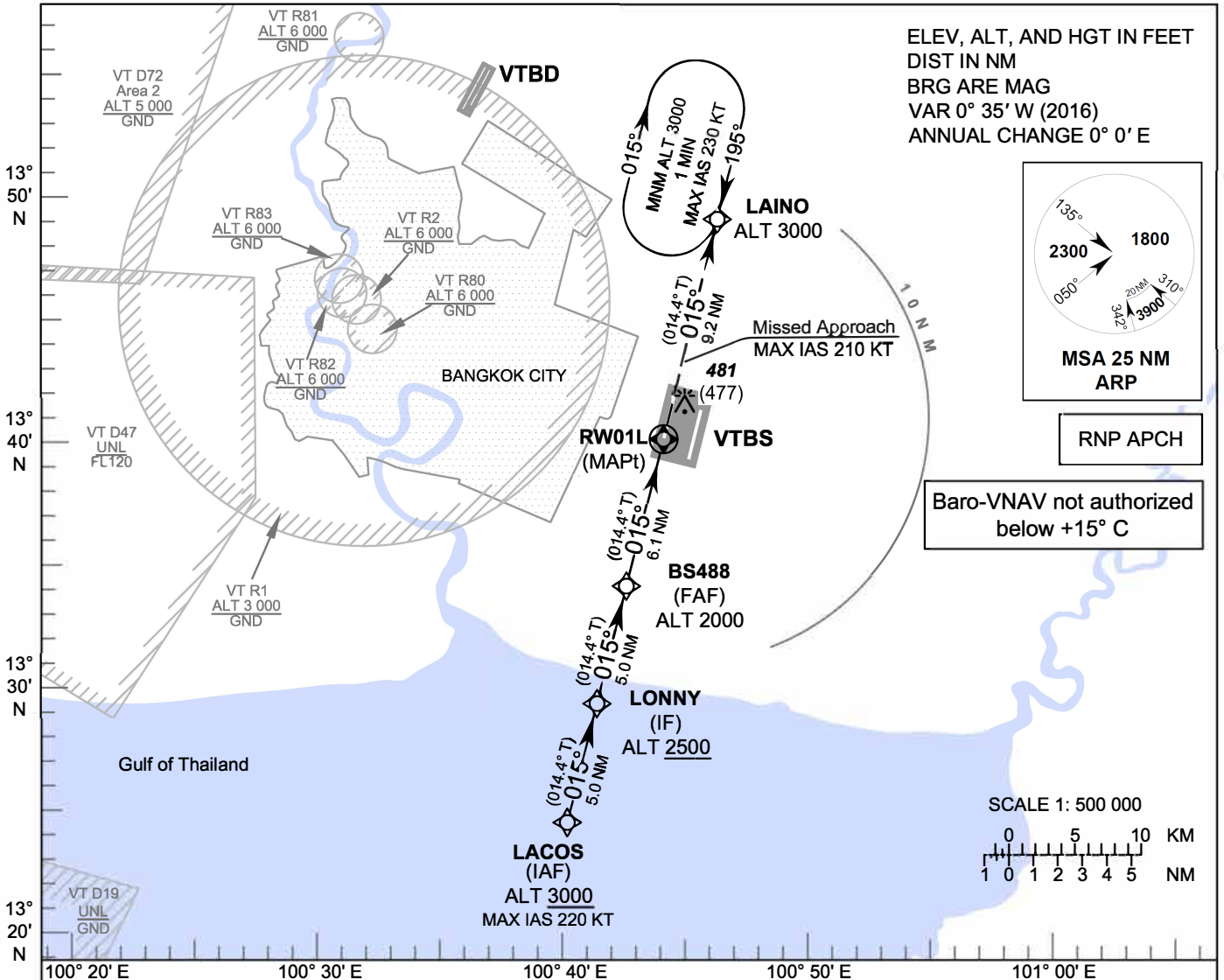
**INSTRUMENT
APPROACH
CHART - ICAO**

**AERODROME ELEV 4 FT
HEIGHTS RELATED TO
THR RWY01L - ELEV 4 FT**

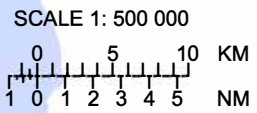
| | |
|----------|-----------------|
| APP | : 119.1, 262.5 |
| | : 120.3, 262.5 |
| | : 133.4, 262.5 |
| | : 122.35, 262.5 |
| | : 124.35, 262.5 |
| | : 125.2, 262.5 |
| ARR | : 121.1 |
| | : 126.3 |
| TWR | : 118.2, 274.5 |
| | : 119.0 |
| ARR ATIS | : 133.6, 278.6 |

BANGKOK / Suvarnabhumi Intl (VTBS)

RNP RWY01L

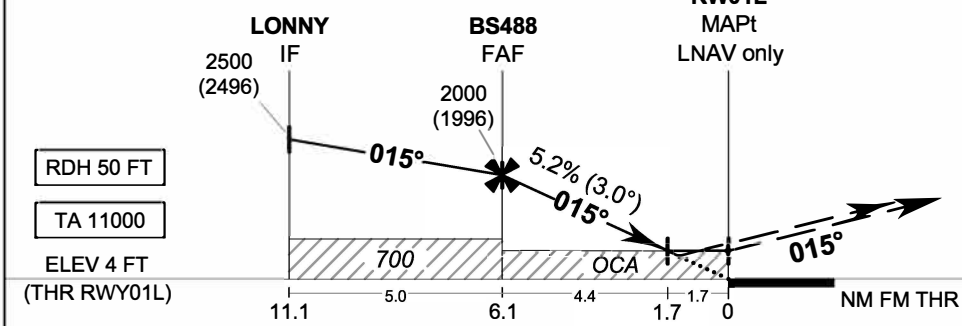


Baro-VNAV not authorized below +15° C



MISSED APPROACH:
No turn before MAPt.
Speed restricted to MAX IAS 210 KT.
Climb to 3000 FT on course 015° to LAINO and hold or as directed by ATC.
(If unable to reach 3000 FT at LAINO, continue climb in the holding pattern.)

CHANGE: MSA. AD ELEV. THR ELEV.



| | | | | | | | | | | | | |
|------------------------|-----------|-----|-----------|-----|-------------------------------|-------------|-------------|-------------|-------------|-------------|-----------|-----------|
| RDH 50 FT | | | | | | | | | | | | |
| TA 11000 | | | | | | | | | | | | |
| ELEV 4 FT (THR RWY01L) | | | | | | | | | | | | |
| | 11.1 | 5.0 | 6.1 | 4.4 | 1.7 | 0 | NM FM THR | | | | | |
| OCA/H | A | B | C | D | NM to NEXT WPT | FAF | 6 NM | 5 NM | 4 NM | 3 NM | 2 NM | 1.7 NM |
| LNAV / VNAV | 400 (396) | | | | Altitude (Height) | 2000 (1996) | 1950 (1946) | 1635 (1631) | 1320 (1316) | 1005 (1001) | 690 (686) | 600 (596) |
| LNAV | 600 (596) | | | | Ground speed | knot | 70 | 90 | 100 | 120 | 140 | 160 |
| Circling (OCH AAL) | 800 (796) | | 900 (896) | | Rate of descent FAF-MAPt 5.2% | ft/min | 369 | 474 | 527 | 632 | 737 | 843 |