

**STANDARD DEPARTURE CHART-  
INSTRUMENT (SID) - ICAO**

TRANSITION ALTITUDE 11000 FT
<b>SPEED RESTRICTION</b> MAX IAS 250 KT AT OR BELOW ALT 10000 FT UNLESS OTHERWISE AUTHORIZED BY ATC.

APP	: 119.1, 262.5
	: 120.3, 262.5
	: 133.4, 262.5
	: 122.35, 262.5
	: 124.35, 262.5
	: 125.2, 262.5
ARR	: 121.1
	: 126.3
TWR	: 118.2, 274.5
	: 119.0
DEP ATIS	: 127.65

**BANGKOK/Suvarnabhumi Intl (VTBS)  
RNAV RWY01R**

DOSBU3K GORSI3K HHN3K  
KASNI3K KIGOB3K REGOS3K  
RYN3K SABIS3K UKERA3K

**DOSBU3K, GORSI3K, KASNI3K, KIGOB3K,  
REGOS3K, RYN3K**  
REQUIRE MINIMUM CLIMB GRADIENT OF  
273 FT PER NM (4.5%) UNTIL PASSING EXSON.

Ground Speed (KT)	75	100	150	200	250	300
Rate of Climb (ft/min)	342	456	684	911	1139	1367

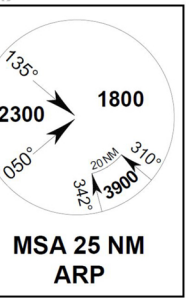
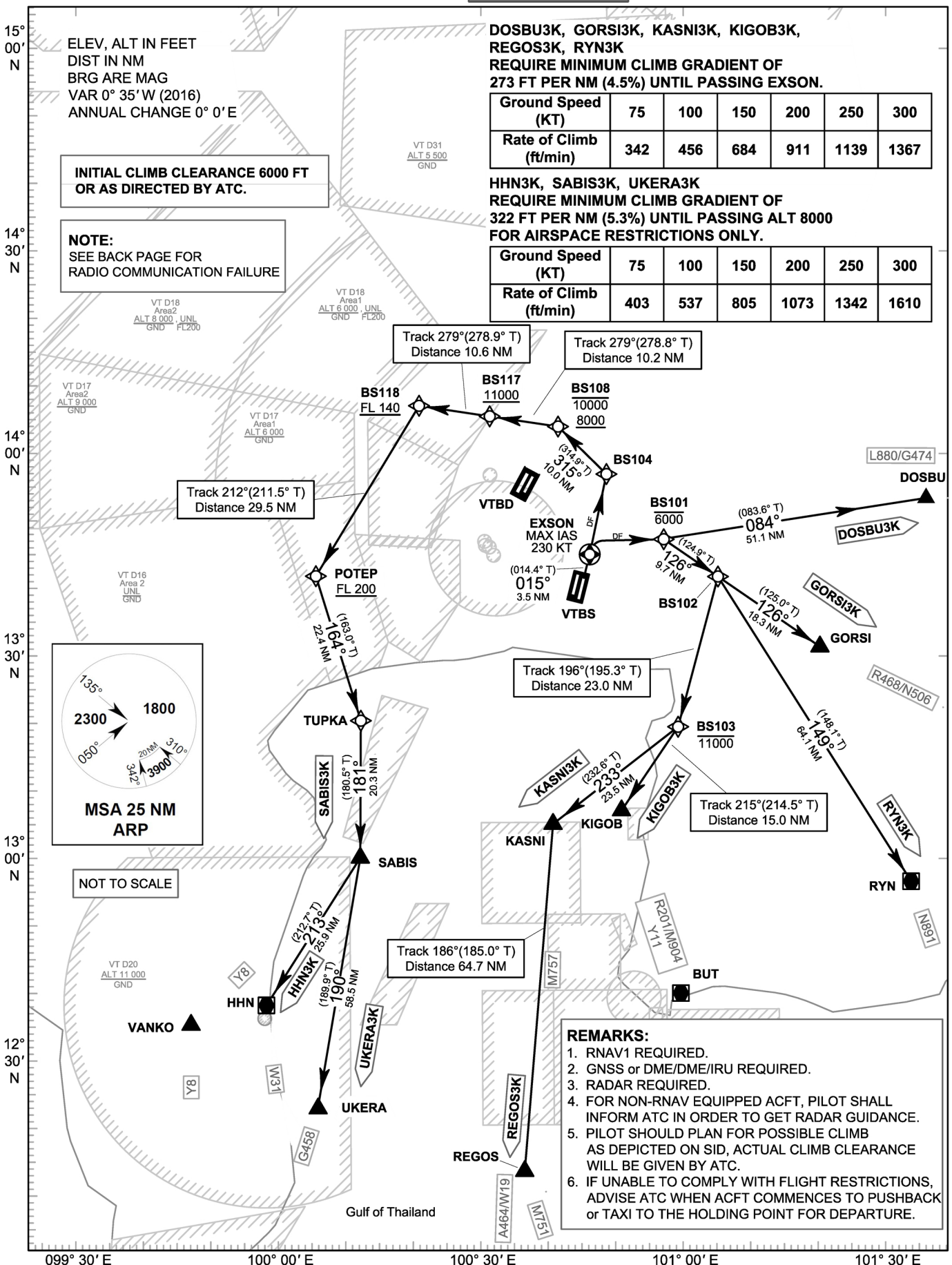
**HHN3K, SABIS3K, UKERA3K**  
REQUIRE MINIMUM CLIMB GRADIENT OF  
322 FT PER NM (5.3%) UNTIL PASSING ALT 8000  
FOR AIRSPACE RESTRICTIONS ONLY.

Ground Speed (KT)	75	100	150	200	250	300
Rate of Climb (ft/min)	403	537	805	1073	1342	1610

**INITIAL CLIMB CLEARANCE 6000 FT  
OR AS DIRECTED BY ATC.**

**NOTE:**  
SEE BACK PAGE FOR  
RADIO COMMUNICATION FAILURE

ELEV, ALT IN FEET  
DIST IN NM  
BRG ARE MAG  
VAR 0° 35' W (2016)  
ANNUAL CHANGE 0° 0' E



**REMARKS:**

1. RNAV1 REQUIRED.
2. GNSS or DME/DME/IRU REQUIRED.
3. RADAR REQUIRED.
4. FOR NON-RNAV EQUIPPED ACFT, PILOT SHALL INFORM ATC IN ORDER TO GET RADAR GUIDANCE.
5. PILOT SHOULD PLAN FOR POSSIBLE CLIMB AS DEPICTED ON SID, ACTUAL CLIMB CLEARANCE WILL BE GIVEN BY ATC.
6. IF UNABLE TO COMPLY WITH FLIGHT RESTRICTIONS, ADVISE ATC WHEN ACFT COMMENCES TO PUSHBACK or TAXI TO THE HOLDING POINT FOR DEPARTURE.

CHANGE: MSA.