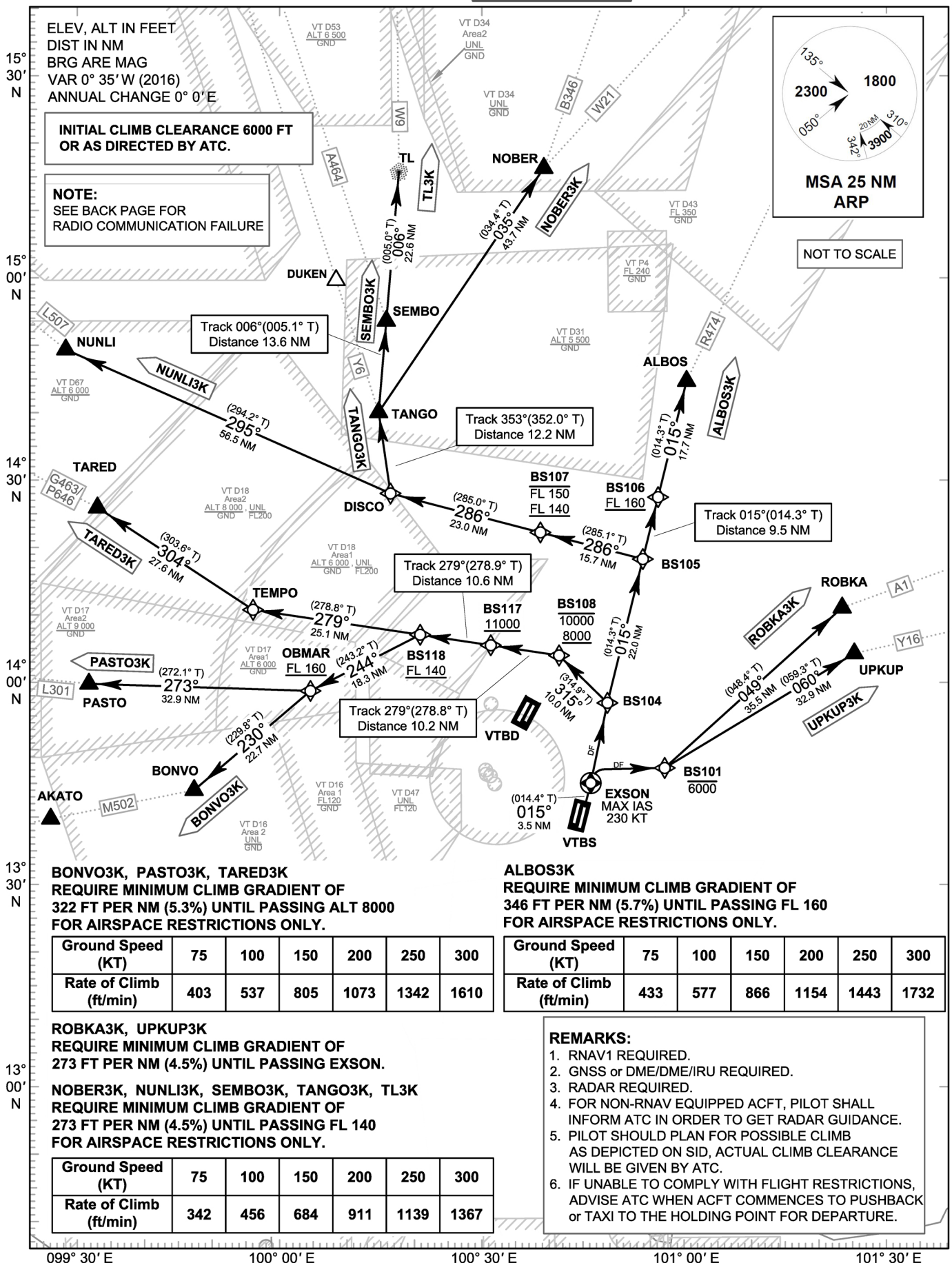


**STANDARD DEPARTURE CHART-
INSTRUMENT (SID) - ICAO**

TRANSITION ALTITUDE 11000 FT	APP : 119.1, 262.5 : 120.3, 262.5 : 133.4, 262.5 : 122.35, 262.5 : 124.35, 262.5 : 125.2, 262.5
SPEED RESTRICTION MAX IAS 250 KT AT OR BELOW ALT 10000 FT UNLESS OTHERWISE AUTHORIZED BY ATC.	ARR : 121.1 : 126.3 TWR : 118.2, 274.5 : 119.0 DEP ATIS : 127.65

**BANGKOK/Suvarnabhumi Intl (VTBS)
RNAV RWY01R**

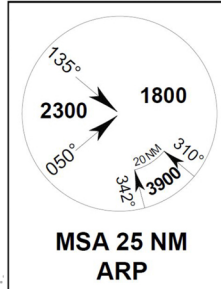
ALBOS3K BONVO3K
NOBER3K NUNLI3K PASTO3K
ROBKA3K SEMBO3K TANGO3K
TARED3K TL3K UPKUP3K



ELEV, ALT IN FEET
DIST IN NM
BRG ARE MAG
VAR 0° 35' W (2016)
ANNUAL CHANGE 0° 0' E

**INITIAL CLIMB CLEARANCE 6000 FT
OR AS DIRECTED BY ATC.**

NOTE:
SEE BACK PAGE FOR
RADIO COMMUNICATION FAILURE



NOT TO SCALE

**BONVO3K, PASTO3K, TARED3K
REQUIRE MINIMUM CLIMB GRADIENT OF
322 FT PER NM (5.3%) UNTIL PASSING ALT 8000
FOR AIRSPACE RESTRICTIONS ONLY.**

Ground Speed (KT)	75	100	150	200	250	300
Rate of Climb (ft/min)	403	537	805	1073	1342	1610

**ALBOS3K
REQUIRE MINIMUM CLIMB GRADIENT OF
346 FT PER NM (5.7%) UNTIL PASSING FL 160
FOR AIRSPACE RESTRICTIONS ONLY.**

Ground Speed (KT)	75	100	150	200	250	300
Rate of Climb (ft/min)	433	577	866	1154	1443	1732

**ROBKA3K, UPKUP3K
REQUIRE MINIMUM CLIMB GRADIENT OF
273 FT PER NM (4.5%) UNTIL PASSING EXSON.**

**NOBER3K, NUNLI3K, SEMBO3K, TANGO3K, TL3K
REQUIRE MINIMUM CLIMB GRADIENT OF
273 FT PER NM (4.5%) UNTIL PASSING FL 140
FOR AIRSPACE RESTRICTIONS ONLY.**

Ground Speed (KT)	75	100	150	200	250	300
Rate of Climb (ft/min)	342	456	684	911	1139	1367

REMARKS:

1. RNAV1 REQUIRED.
2. GNSS or DME/DME/IRU REQUIRED.
3. RADAR REQUIRED.
4. FOR NON-RNAV EQUIPPED ACFT, PILOT SHALL INFORM ATC IN ORDER TO GET RADAR GUIDANCE.
5. PILOT SHOULD PLAN FOR POSSIBLE CLIMB AS DEPICTED ON SID, ACTUAL CLIMB CLEARANCE WILL BE GIVEN BY ATC.
6. IF UNABLE TO COMPLY WITH FLIGHT RESTRICTIONS, ADVISE ATC WHEN ACFT COMMENCES TO PUSHBACK or TAXI TO THE HOLDING POINT FOR DEPARTURE.

CHANGE: MSA.