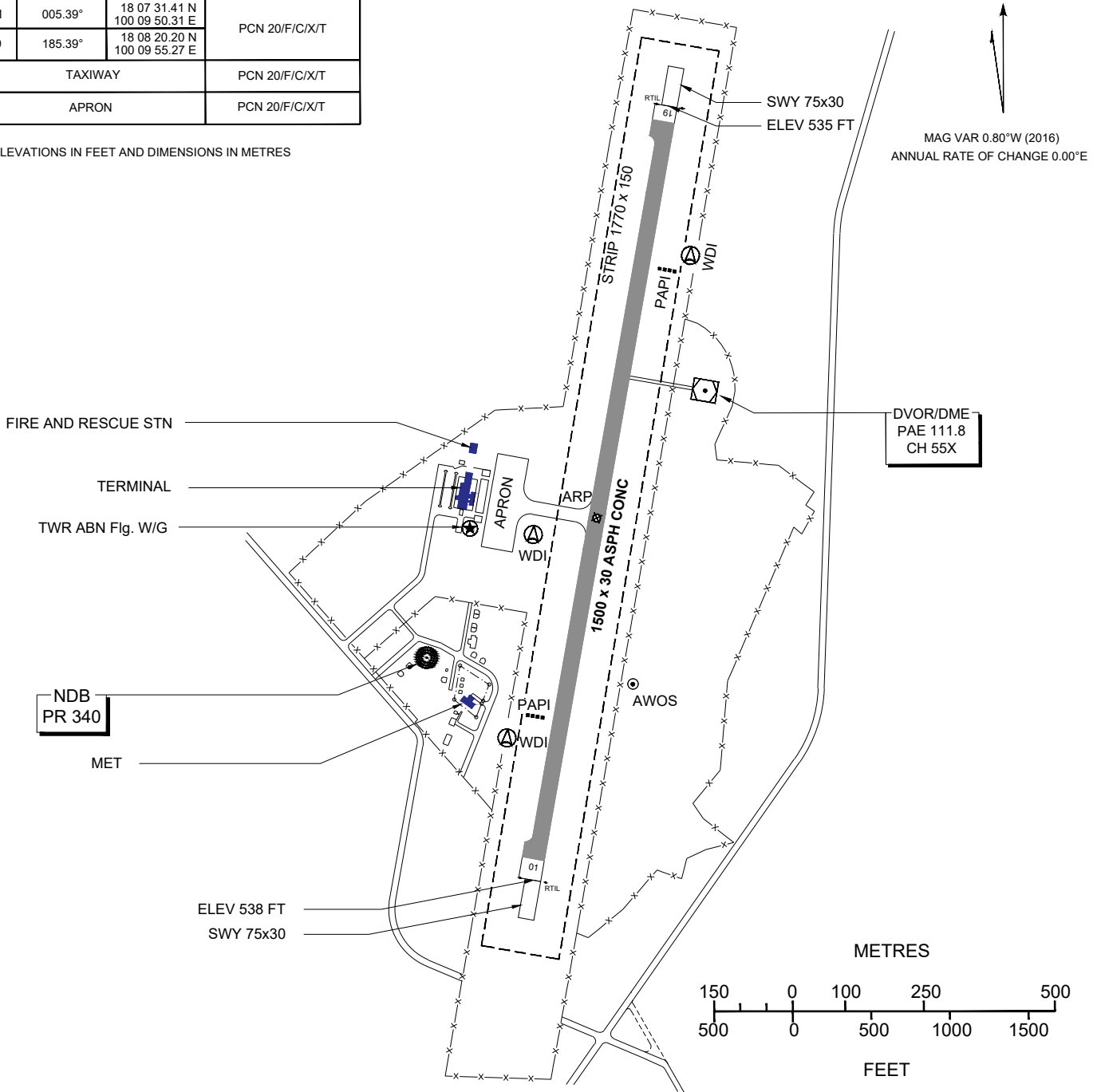
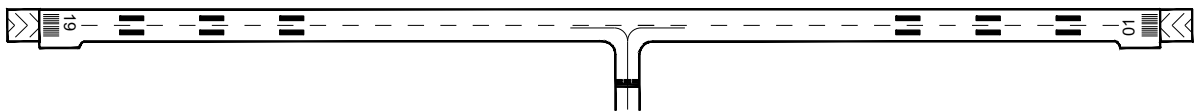


RWY	DIRECTION (TRUE BG)	THR	BEARING STRENGTH
01	005.39°	18 07 31.41 N 100 09 50.31 E	PCN 20/F/C/X/T
19	185.39°	18 08 20.20 N 100 09 55.27 E	
TAXIWAY			PCN 20/F/C/X/T
APRON			PCN 20/F/C/X/T

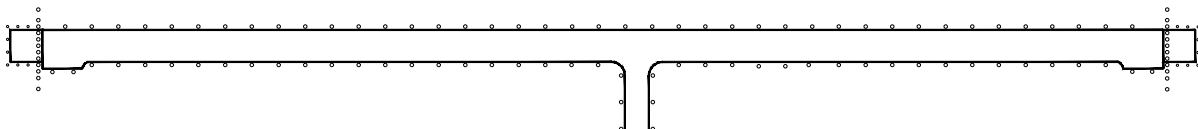
ELEVATIONS IN FEET AND DIMENSIONS IN METRES



MARKING AIDS RWY 01/19 AND EXIT TWY



LIGHTING AIDS RWY 01/19 AND EXIT TWY



CHANGE: REVISED CHART. RTIL RWY 01/19 ADDED. TDZ ELEV CANCELLED.