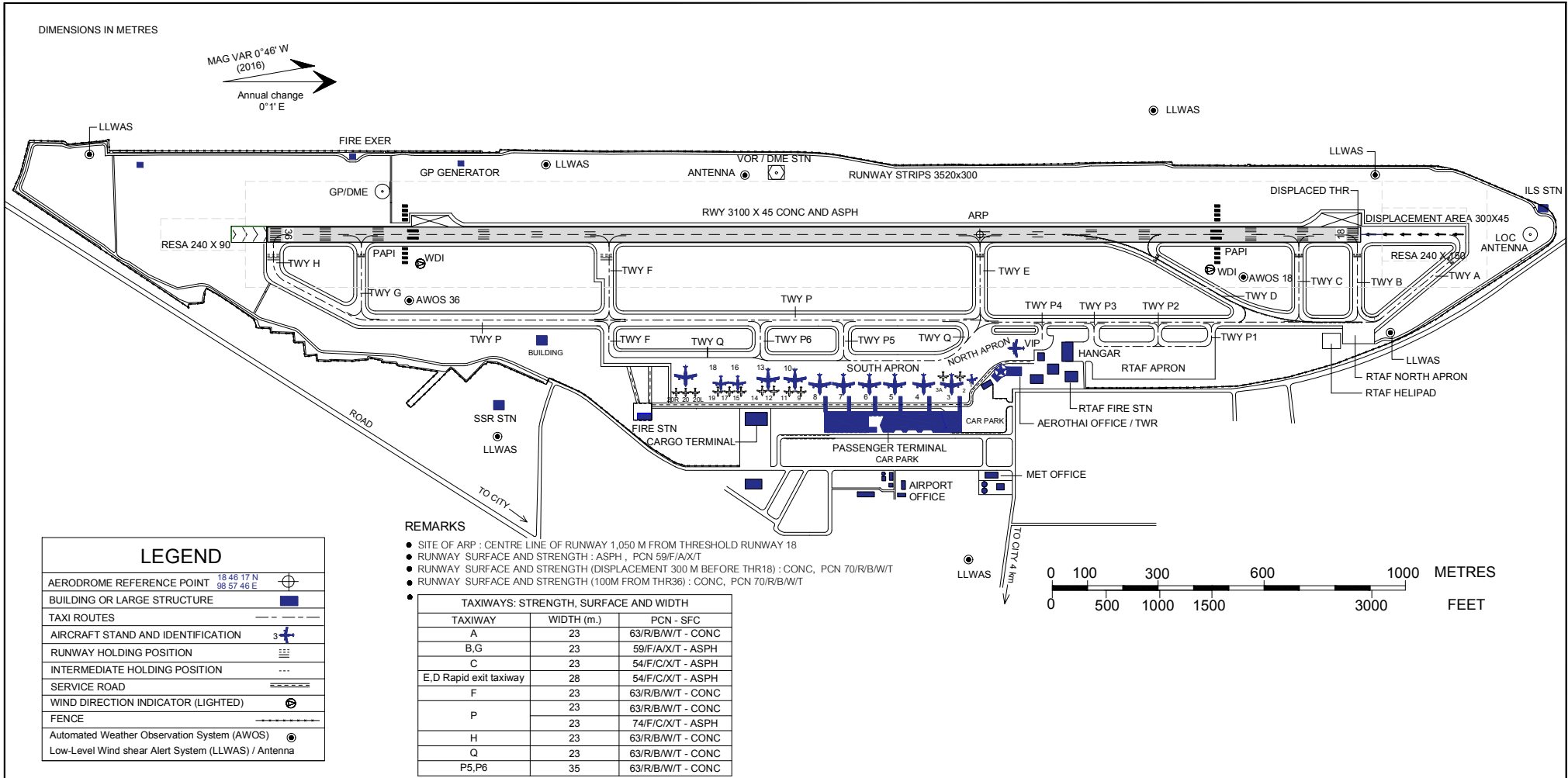


AERODROME GROUND MOVEMENT CHART - ICAO

**TWR 118.1
GND 121.9**

CHIANG MAI / Chiang Mai Intl



CHANGE : REMARK-TAXIWAY STRENGTH,SURFACE AND WIDTH-WIND SHEAR ALERT SYSTEM-AWOS CHANGED. LLWAS-ANTENNA-LEGEND ADDED.