

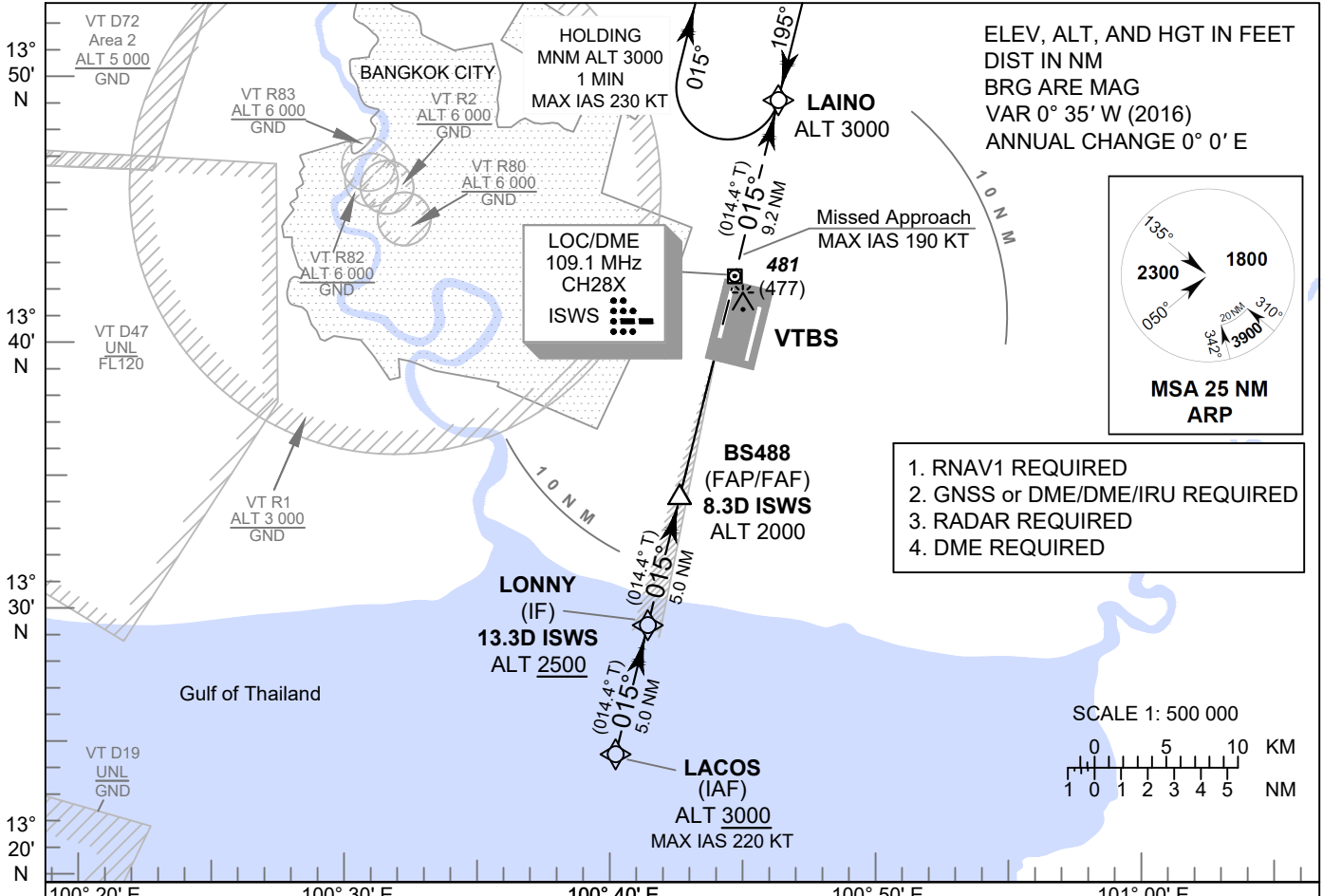
**INSTRUMENT  
APPROACH  
CHART - ICAO**

**AERODROME ELEV 4 FT  
HEIGHTS RELATED TO  
THR RWY01L - ELEV 4 FT**

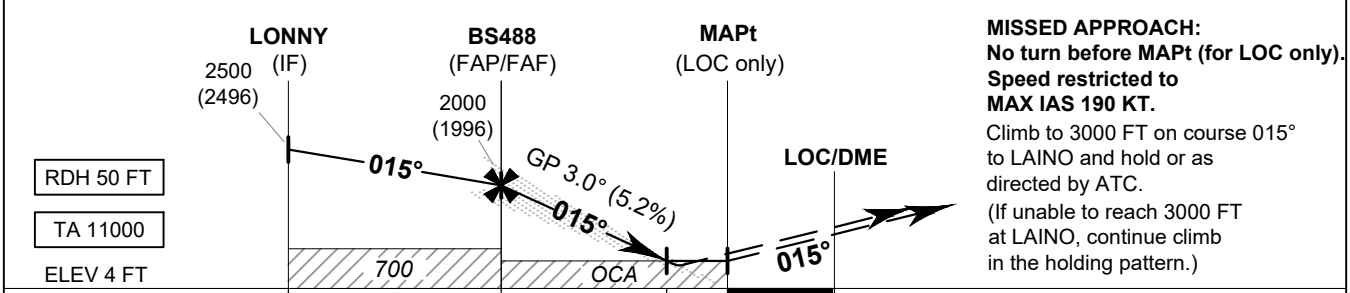
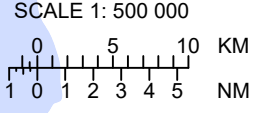
APP	: 119.1, 262.5
	: 120.3, 262.5
	: 133.4, 262.5
	: 122.35, 262.5
	: 124.35, 262.5
	: 125.2, 262.5
ARR	: 121.1
	: 126.3
TWR	: 118.2, 274.5
	: 119.0
ARR ATIS	: 133.6, 278.6

**BANGKOK / Suvarnabhumi Intl (VTBS)**

**ILS or LOC z RWY01L  
CAT II**



1. RNAV1 REQUIRED
2. GNSS or DME/DME/IRU REQUIRED
3. RADAR REQUIRED
4. DME REQUIRED



		13.3	8.3	3.7	2.2	0	DME FM LOC/DME
		11.1	6.1	1.5	0		NM FM THR

OCA/H		A	B	C	D	GS OUT	Distance (ISWS)	FAF	8 D	7 D	6 D	5 D	4 D	3.7 D
Straight-in Approach	CAT I	230 (226) *					Altitude (Height)	2000 (1996)	1890 (1886)	1570 (1566)	1255 (1251)	940 (936)	625 (621)	530 (526)
	CAT II	105 (101) **				Ground speed		knot	70	90	100	120	140	160
LOC only		530 (526)				Rate of descent (5.2%)	ft/min	369	474	527	632	737	843	
Circling (OCH AAL)		800 (796)		900 (896)										

\* These procedures require a missed approach climb gradient of 5% (304 FT/NM) until passing ALT 1000 FT. For aircraft which only achieve a 2.5% (152 FT/NM) climb gradient, the CAT I OCA (OCH) is 370 (366) FT

\*\* These procedures require a missed approach climb gradient of 4% (243 FT/NM) until passing ALT 1000 FT. For aircraft which only achieve a 2.5% (152 FT/NM) climb gradient, the CAT II OCA (OCH) is 295 (291) FT

CHANGE: MSA. AD ELEV. THR ELEV.