

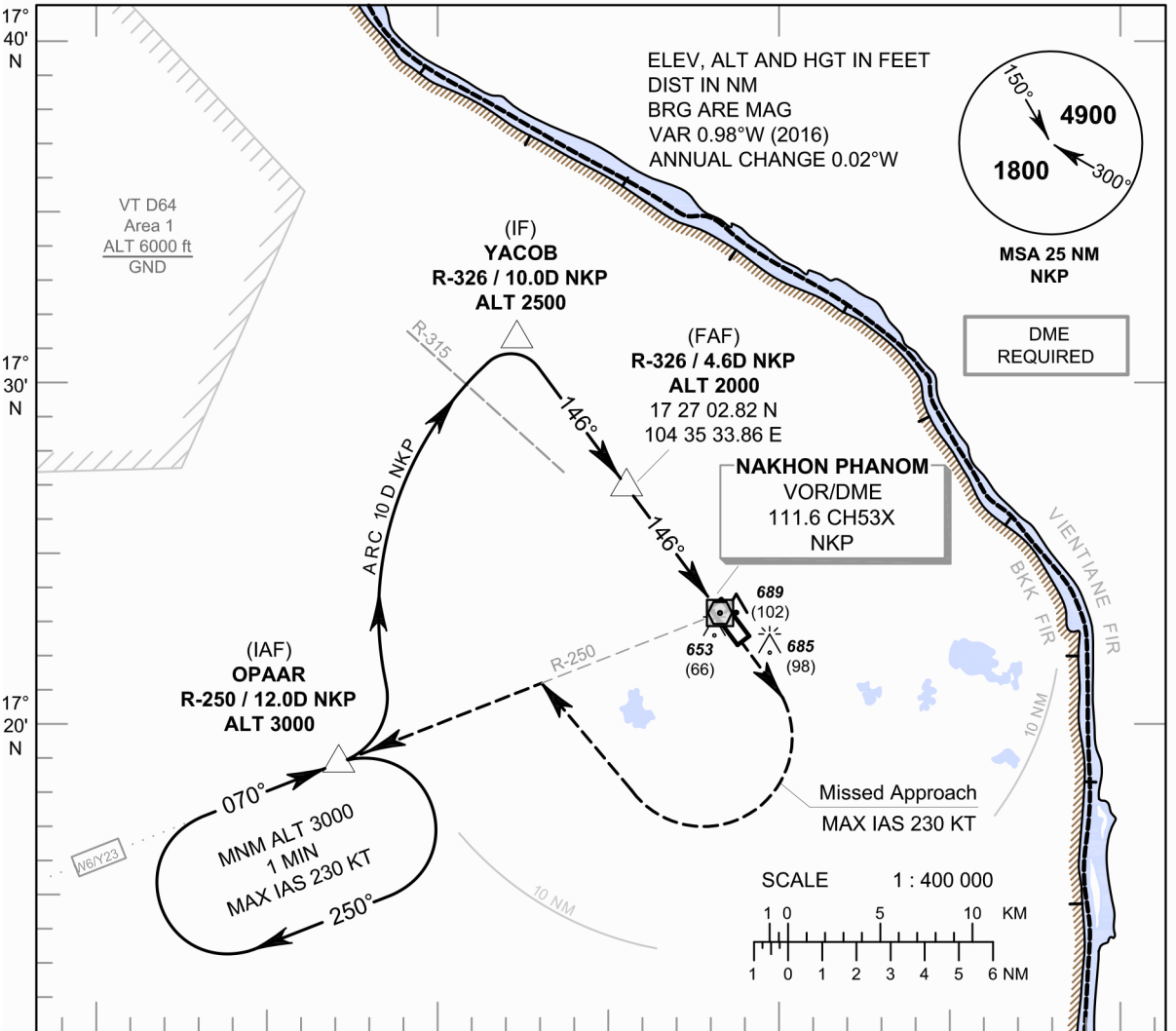
**INSTRUMENT  
APPROACH  
CHART - ICAO**

**AERODROME ELEV 587 FT**  
HEIGHTS RELATED TO  
AERODROME ELEV

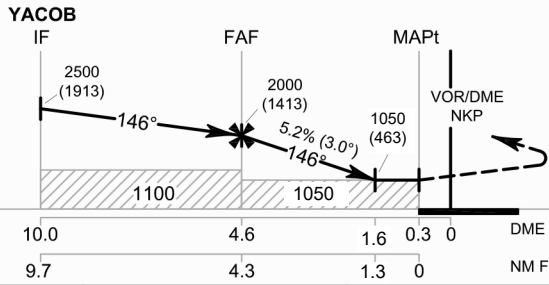
APP : 123.35 , 284.0  
TWR : 122.5  
GND : 121.9

**NAKHON PHANOM / Nakhon Phanom  
(VTUW)**

**VOR RWY15**



104° 20' E                      104° 30' E                      104° 40' E                      104° 50' E



**MISSED APPROACH :**  
No turn before MAPt.  
Speed restricted to  
**MAX IAS 230 KT** until after turn.  
Climb straight ahead to 2400 FT then turn right to intercept outbound R-250 NKP VOR then proceed to OPAAR at 3000 FT and hold or as directed by ATC.

| OCA/H                  | A          | B          | C | D | Distance to NKP        | FAF         | 4 D         | 3 D        | 2 D        | 1.6 D      |     |     |
|------------------------|------------|------------|---|---|------------------------|-------------|-------------|------------|------------|------------|-----|-----|
| Straight - in Approach | 1050 (463) |            |   |   | Altitude (Height)      | 2000 (1413) | 1805 (1218) | 1490 (903) | 1175 (588) | 1050 (463) |     |     |
|                        |            |            |   |   | Ground speed           | knot        | 70          | 90         | 100        | 120        | 140 | 160 |
| Circling (OCH AAL)     | 1100 (513) | 1300 (713) |   |   | Rate of descent (5.2%) | (ft/min)    | 369         | 474        | 527        | 632        | 737 | 843 |

CHANGE: OCA/H.