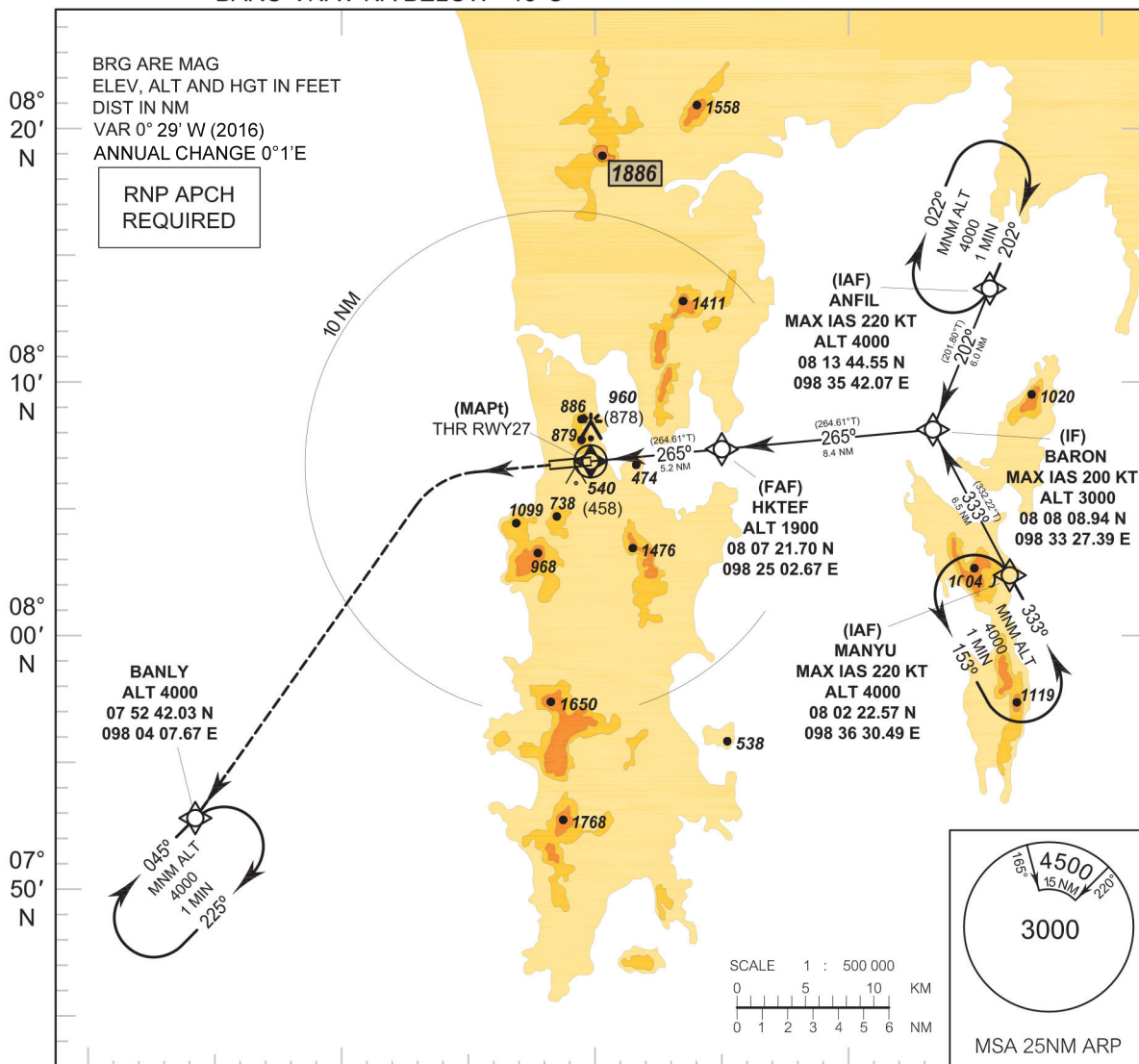


**INSTRUMENT APPROACH CHART - ICAO**  
**AERODROME ELEV 82 FT**  
**HEIGHTS RELATED TO AERODROME ELEV**  
**BARO-VNAV NA BELOW +15°C**

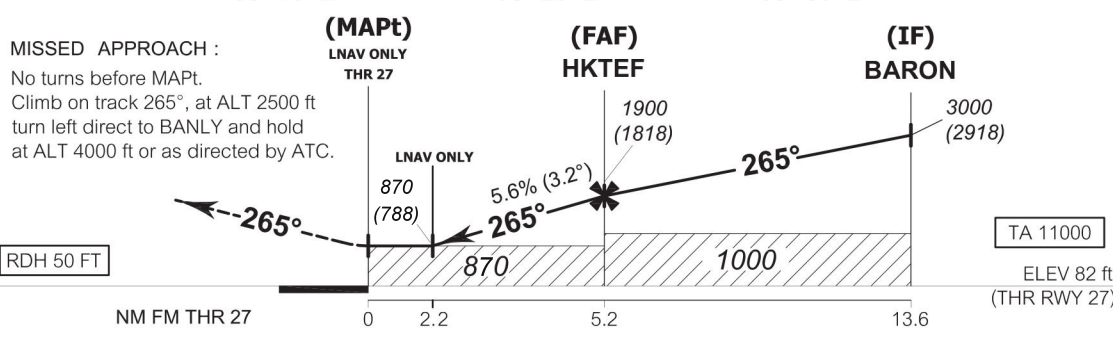
APP : 124.7, 284.0  
 ARR : 120.7  
 TWR : 118.1, 236.6  
 GND : 121.9  
 ATIS : 128.0

**PHUKET / Phuket Intl (VTSP)**

**RNP z RWY27**



**MISSED APPROACH :**  
 No turns before MAPt.  
 Climb on track 265°, at ALT 2500 ft  
 turn left direct to BANLY and hold  
 at ALT 4000 ft or as directed by ATC.



OCA/H	A	B	C	D	NM to MAPt	2.2 NM	3 NM	4 NM	FAF			
LNAV/VNAV	870 (788)				Altitude (Height)	870 (788)	1160 (1078)	1500 (1418)	1900 (1818)			
LNAV	870 (788)				Ground speed (GS)	knot	100	120	140	160	180	200
Circling (OCH AAL)	1500 (1418)				Rate of descent	(ft/min)	565	680	795	905	1020	1135

CHANGE : MAG VAR.

\* FOR CIRCLING RESTRICTIONS SEE VERSO.