

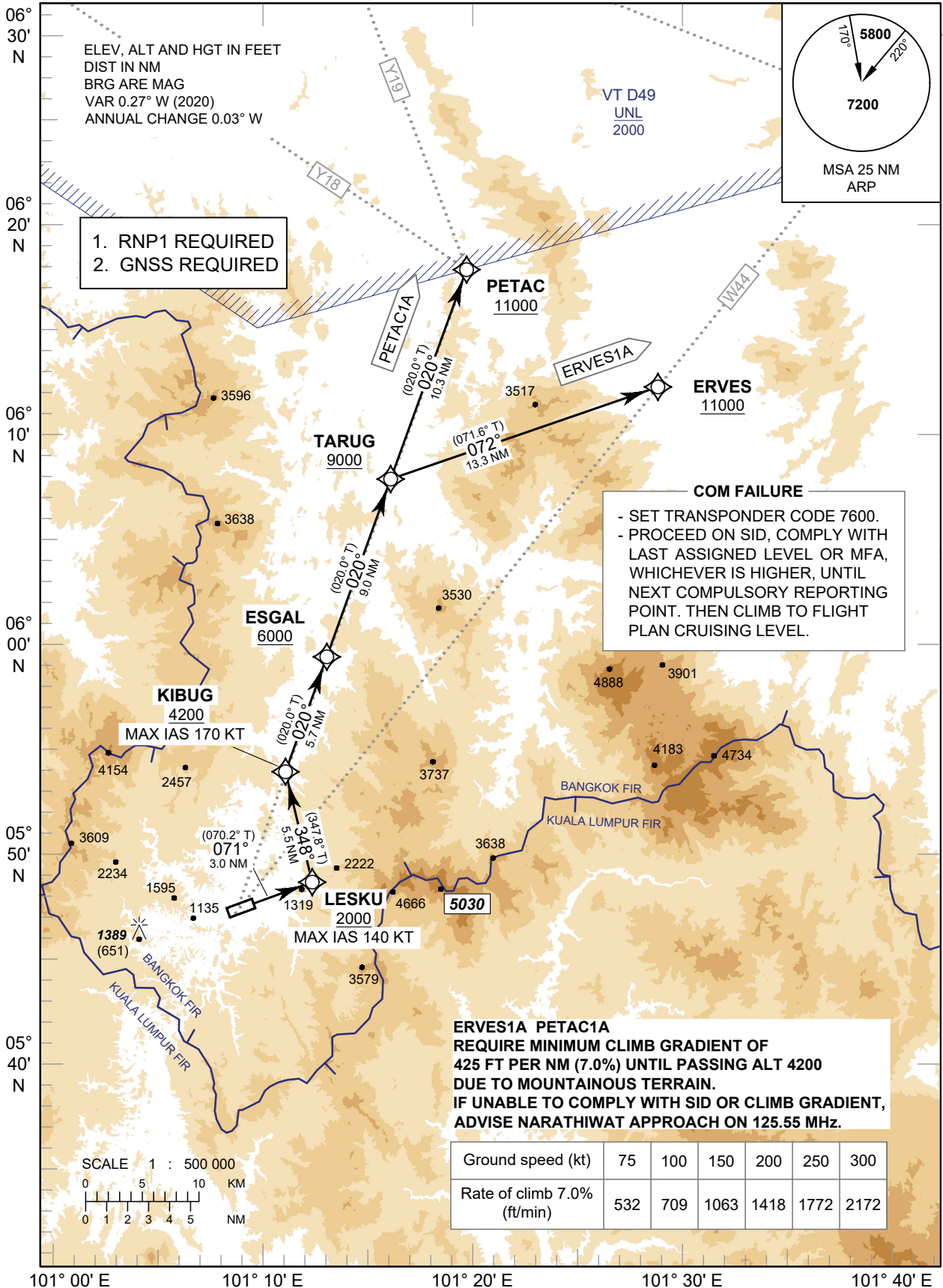
**STANDARD DEPARTURE CHART  
INSTRUMENT (SID) - ICAO**

TRANSITION ALTITUDE  
11000

APP : 125.55  
TWR : 124.15, 236.6  
GND : 122.15  
ATIS : 128.50

**YALA / Betong (VTSY)  
RNAV RWY07**

ERVES1A PETAC1A



CHANGE: OBSTACLE AND SPOT HEIGHT ADDED.