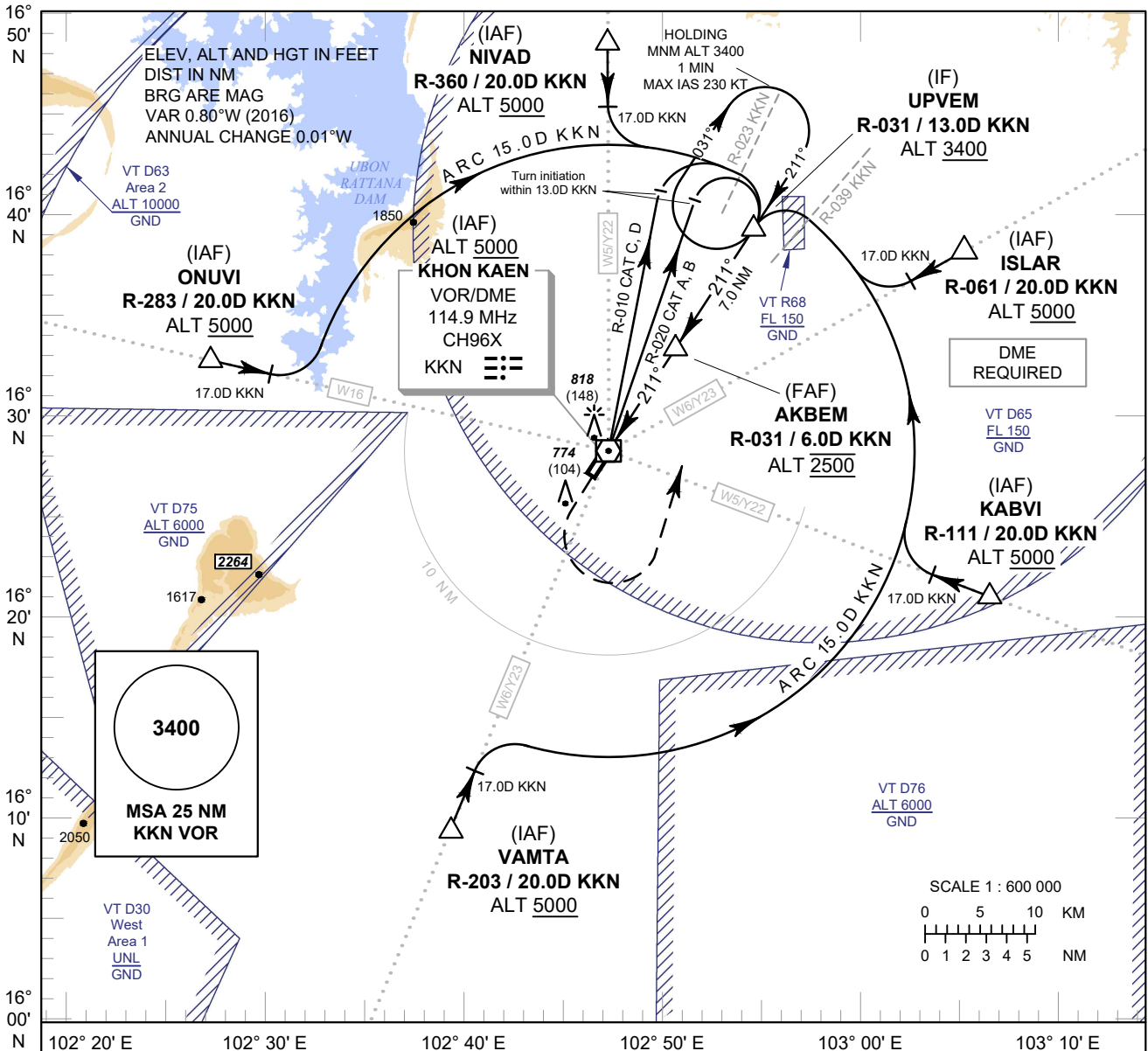


**INSTRUMENT
APPROACH
CHART - ICAO**

**AERODROME ELEV 670 FT
HEIGHTS RELATED TO
THR RWY21 - ELEV 670 FT**

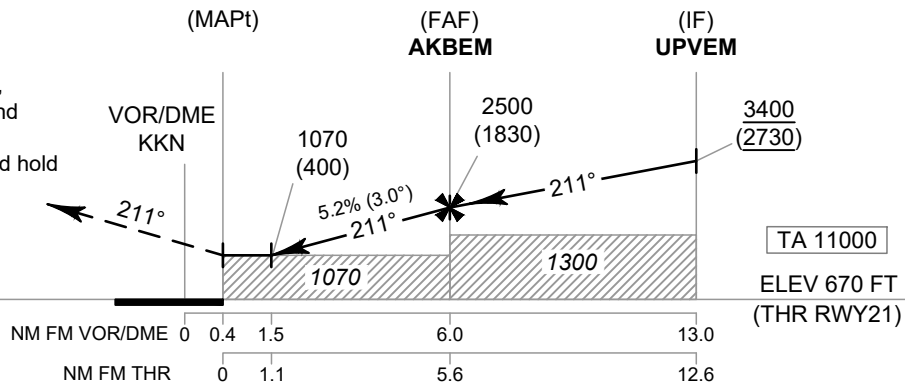
APP : 123.4 , 240.0
TWR : 122.25 , 236.6
GND : 121.9
ATIS : 126.85

**KHON KAEN /
Khon Kaen (VTUK)
VOR RWY21**



MISSED APPROACH :
No turn before MAPt.

Climb straight ahead to 1500 FT,
then turn left to intercept outbound
R-031 KKN VOR and proceed to
UPVEM at minimum 3400 FT and hold
or as directed by ATC.



| OCA/H | A | B | C | D | Distance (KKN) | 1.5 D | 2 D | 3 D | 4 D | 5 D | FAF | | |
|----------------------|------------|---|---|---|-------------------|------------|------------|------------|-------------|-------------|-------------|-----|-----|
| Straight-in Approach | 1070 (400) | | | | Altitude (Height) | 1070 (400) | 1225 (555) | 1540 (870) | 1855 (1185) | 2175 (1505) | 2500 (1830) | | |
| | | | | | Ground Speed | knot | 70 | 90 | 100 | 120 | 140 | 160 | |
| Circling (OCH AAL) | 1500 (830) | | | | Rate of Descent | 5.2% | ft/min | 369 | 474 | 527 | 632 | 737 | 843 |

CHANGE: ROUTE Y22, Y23 ADDED.