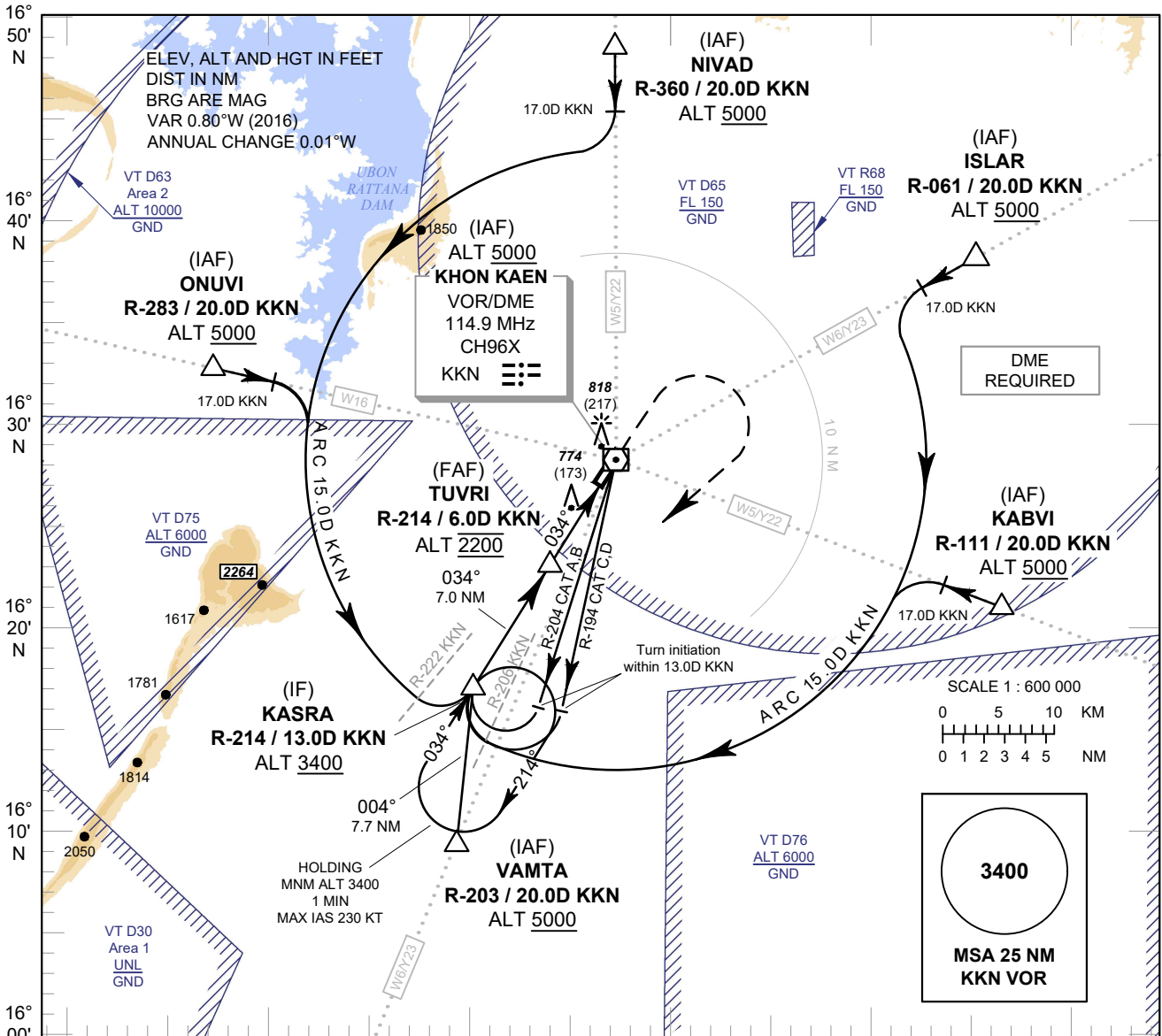


**INSTRUMENT
APPROACH
CHART - ICAO**

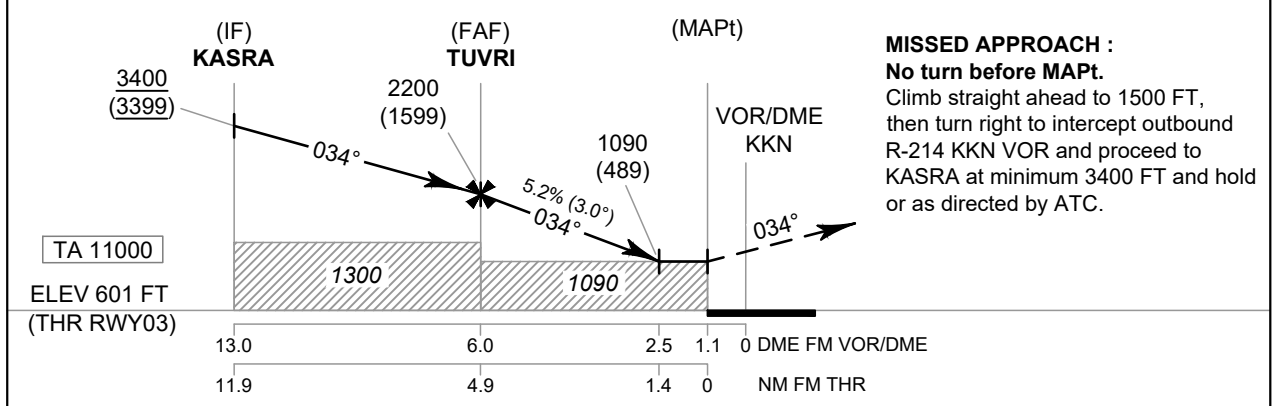
**AERODROME ELEV 670 FT
HEIGHTS RELATED TO
THR RWY03 - ELEV 601 FT**

APP : 123.4 , 240.0
TWR : 122.25 , 236.6
GND : 121.9
ATIS : 126.85

**KHON KAEN /
Khon Kaen (VTUK)
VOR RWY03**



102° 20' E 102° 30' E 102° 40' E 102° 50' E 103° 00' E 103° 10' E



MISSED APPROACH :
No turn before MAPt.
Climb straight ahead to 1500 FT,
then turn right to intercept outbound
R-214 KKN VOR and proceed to
KASRA at minimum 3400 FT and hold
or as directed by ATC.

OCA/H	A	B	C	D	Distance (KKN)	FAF	5 D	4 D	3 D	2.5 D		
Straight-in Approach	1090 (489)				Altitude (Height)	2200 (1599)	1885 (1284)	1565 (964)	1250 (649)	1090 (489)		
					Ground Speed	knot	70	90	100	120	140	160
Circling (OCH AAL)	1500 (830)				Rate of Descent	ft/min	369	474	527	632	737	843

CHANGE: ROUTE Y22, Y23 ADDED.