

**STANDARD DEPARTURE CHART - INSTRUMENT (SID) - ICAO**

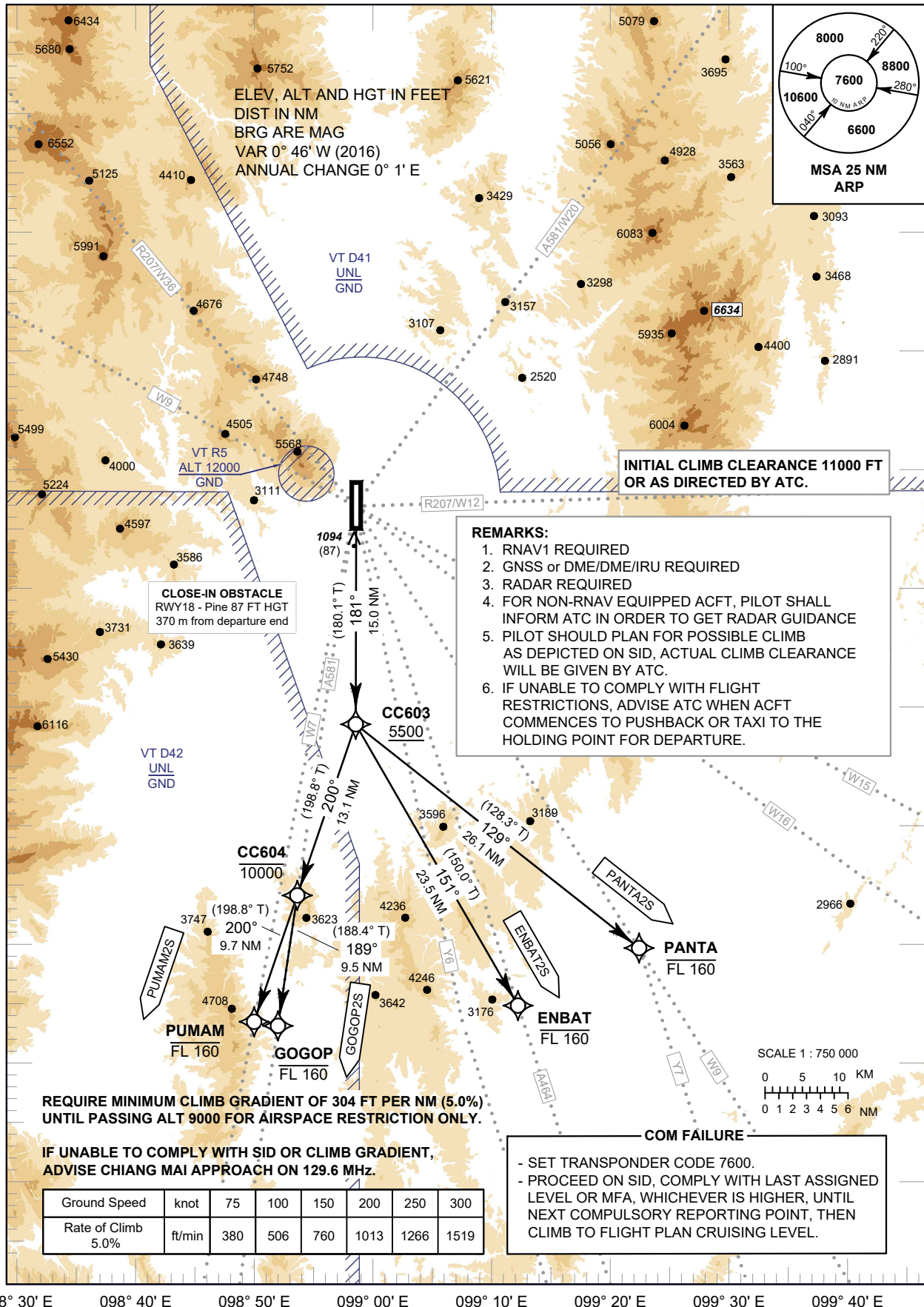
TRANSITION ALTITUDE  
11000 FT

**CHIANG MAI / Chiang Mai Intl (VTCC)**

APP : 129.6 , 305.4  
TWR : 118.1 , 236.6  
GND : 121.9 , 275.8  
ATIS : 127.2 , 301.5

**RNAV RWY18**

ENBAT2S GOGOP2S PANTA2S PUMAM2S



CHANGE: NEW CHART.