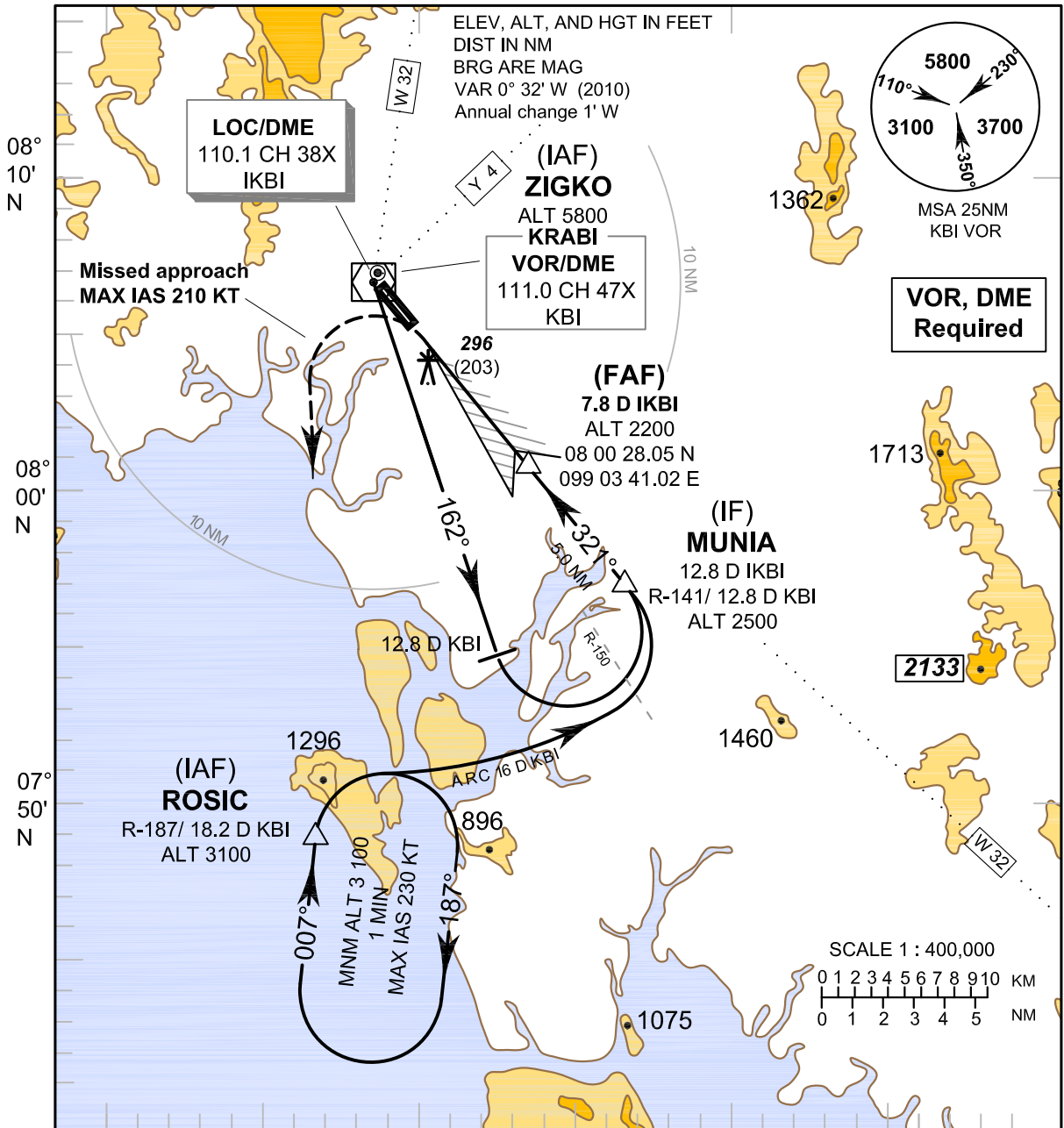


INSTRUMENT AERODROME ELEV 93 FT
APPROACH HEIGHTS RELATED TO
CHART-ICAO AERODROME ELEV

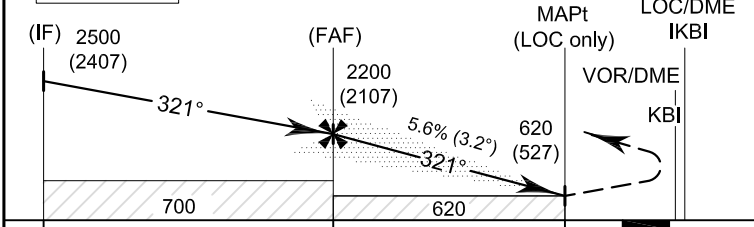
APP : 120.05
 TWR : 122.5, 236.6
 GND : 121.9
 ATIS : 132.4

KRABI/Krabi (VTSG)
LOC RWY 32



98° 50' E 99° 00' E 99° 10' E

TA 11 000



Missed Approach :
No turn before MAPt .
Speed restricted to
MAX IAS 210 KT until after turn.
 At MAPt, turn left climb to intercept
 outbound R-187 KBI VOR then
 proceed to **ROSIC** at 3100 FT and
 hold or as directed by ATC.

ELEV 93 FT
(THR RWY 32)

OCA/H	A	B	C	D	Distance (IKBI)	FAF	7 D	6 D	5 D	4 D	3.2 D	
Straight - in Approach	620 (527)				Altitude (Height)	2200 (2107)	1910 (1817)	1570 (1477)	1230 (1137)	890 (797)	620 (527)	
					Ground Speed	knot	70	90	100	120	140	160
Circling	Not Authorized				Rate of descent (5.6%)	(ft/min)	397	510	567	681	794	907

CHANGE: TWR FREQUENCY, GND FREQUENCY, ATIS FREQUENCY.