

**STANDARD DEPARTURE CHART - INSTRUMENT (SID) - ICAO**

TRANSITION ALTITUDE  
11000 FT

APP : 124.7, 284.0  
ARR : 120.7  
TWR : 118.1, 236.6  
GND : 121.9  
ATIS : 128.0

**PHUKET/Phuket Intl (VTSP)  
RNAV RWY27**

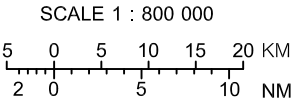
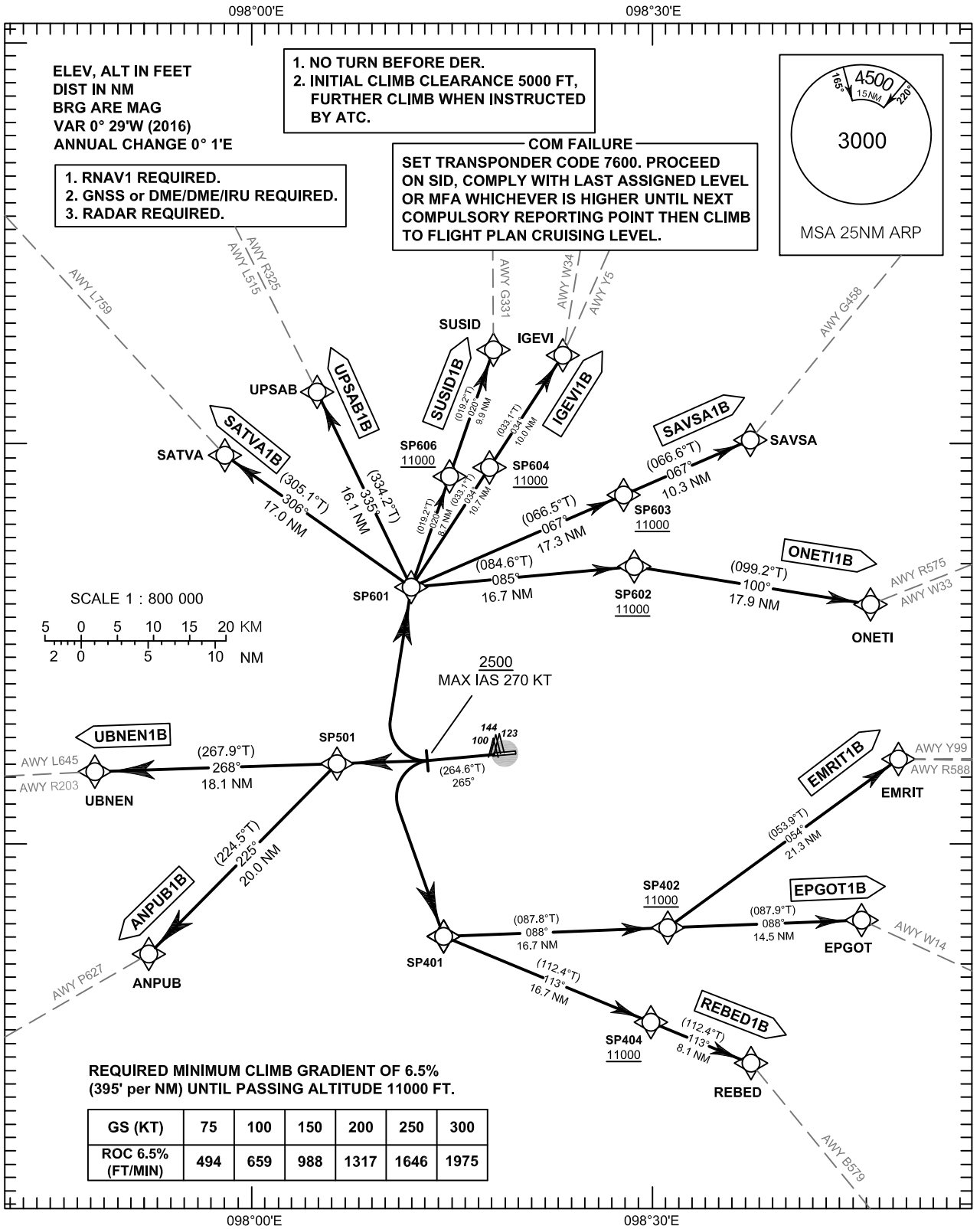
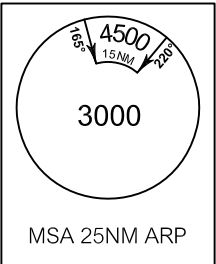
ANPUB1B EMRIT1B EPGOT1B IGEVI1B ONET11B REBED1B  
SATVA1B SAVSA1B SUSID1B UBNE1B UPSAB1B

1. NO TURN BEFORE DER.
2. INITIAL CLIMB CLEARANCE 5000 FT, FURTHER CLIMB WHEN INSTRUCTED BY ATC.

ELEV, ALT IN FEET  
DIST IN NM  
BRG ARE MAG  
VAR 0° 29'W (2016)  
ANNUAL CHANGE 0° 1'E

1. RNAV1 REQUIRED.
2. GNSS or DME/DME/IRU REQUIRED.
3. RADAR REQUIRED.

COM FAILURE  
SET TRANSPONDER CODE 7600. PROCEED ON SID, COMPLY WITH LAST ASSIGNED LEVEL OR MFA WHICHEVER IS HIGHER UNTIL NEXT COMPULSORY REPORTING POINT THEN CLIMB TO FLIGHT PLAN CRUISING LEVEL.



REQUIRED MINIMUM CLIMB GRADIENT OF 6.5% (395' per NM) UNTIL PASSING ALTITUDE 11000 FT.

GS (KT)	75	100	150	200	250	300
ROC 6.5% (FT/MIN)	494	659	988	1317	1646	1975

CHANGE: ARR FREQUENCY ADDED.  
GND FREQUENCY ADDED.  
ATIS FREQUENCY ADDED.