

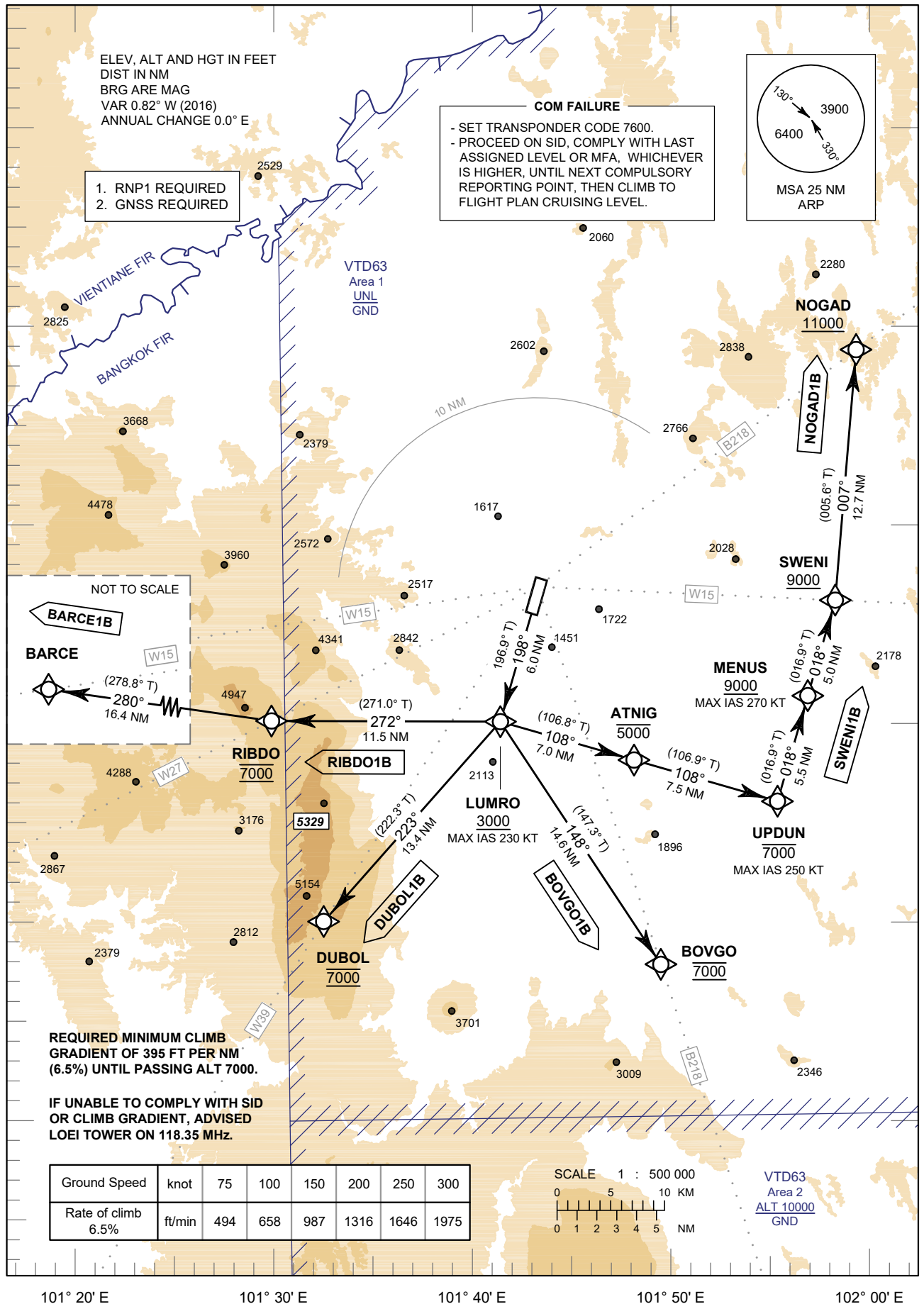
**STANDARD DEPARTURE CHART -
INSTRUMENT (SID) - ICAO**

TRANSITION ALTITUDE
11000 FT

APP : 122.55
TWR : 118.35 , 236.6
ATIS : 126.25

**LOEI / Loei (VTUL)
RNAV RWY19**

BARCE1B BOVGO1B DUBOL1B
NOGAD1B RIBDO1B SWENI1B



CHANGE : NEW CHART.