

Phone: +662 568 8831  
 Fax: +662 576 1903  
 AFTN: VTBAYOYX  
 E-mail: aisthai@caat.or.th  
 ais@caat.or.th

**THE CIVIL AVIATION AUTHORITY OF THAILAND**  
**Aeronautical Information Management Department**  
 222 Soi Vibhavadi Rangsit 28,  
 Vibhavadi Rangsit Rd., Chatuchak,  
 Chatuchak, Bangkok 10900 Thailand

**AIRAC AIP - THAILAND**  
**Amendment 02/24**  
**11 JAN 24**

This AIRAC AIP AMDT 02/24 contains:

- GEN 0.2 RECORD OF AIP AMENDMENTS
- GEN 0.4 CHECKLIST OF AIP PAGES
- GEN 3.2 AERONAUTICAL CHARTS
- GEN 3.4 COMMUNICATION SERVICES
- GEN 4.1 CHARGES FOR AERODROMES/HELIPORTS AND AIR NAVIGATION SERVICES
- ENR 2.1 FIR, UIR, AND CTA
- AD 2-VTCT-1 AD 2.2 AERODROME GEOGRAPHICAL AND ADMINISTRATIVE DATA
  - AD 2.12 RUNWAY PHYSICAL CHARACTERISTICS
  - AD 2.13 DECLARED DISTANCES
  - AD 2.14 APPROACH AND RUNWAY LIGHTING
  - AD 2.24 CHART RELATED TO AN AERODROME
- AD 2-VTCT-2 Aerodrome Chart - ICAO
  - Aerodrome Ground Movement Chart - ICAO
- AD 2-VTBP-1 AD 2.4 HANDLING SERVICES AND FACILITIES
  - AD 2.6 RESCUE AND FIRE FIGHTING SERVICES
  - AD 2.19 RADIO NAVIGATION AND LANDING AIDS
- AD 2-VTPH-1 AD 2.8 APRONS, TAXIWAYS AND CHECK LOCATIONS/POSITIONS DATA

1.

DESTROY			INSERT		
GEN	0.2-2	25 JAN 2024	GEN	0.2-2	22 FEB 2024
	0.4-1	25 JAN 2024		0.4-1	22 FEB 2024
	0.4-2	25 JAN 2024		0.4-2	22 FEB 2024
	0.4-3	25 JAN 2024		0.4-3	22 FEB 2024
	0.4-4	25 JAN 2024		0.4-4	22 FEB 2024
	0.4-5	25 JAN 2024		0.4-5	22 FEB 2024
	0.4-6	25 JAN 2024		0.4-6	22 FEB 2024
	0.4-7	25 JAN 2024		0.4-7	22 FEB 2024
	0.4-8	25 JAN 2024		0.4-8	22 FEB 2024
	0.4-9	25 JAN 2024		0.4-9	22 FEB 2024
	0.4-10	25 JAN 2024		0.4-10	22 FEB 2024
	3.2-3	25 JAN 2024		3.2-3	22 FEB 2024
	3.2-4	25 JAN 2024		3.2-4	22 FEB 2024
	3.2-5	25 JAN 2024		3.2-5	22 FEB 2024
	3.4-1	18 JUL 2019		3.4-1	22 FEB 2024
	3.4-2	18 JUL 2019		3.4-2	22 FEB 2024

DESTROY			INSERT		
	3.4-4	18 JUL 2019		3.4-4	22 FEB 2024
	3.4-5	18 JUL 2019		3.4-5	22 FEB 2024
	3.4-7	18 JUL 2019		-	-
	3.4-8	18 JUL 2019		-	-
	3.4-9	18 JUL 2019		-	-
	3.4-10	10 SEP 2020		-	-
	4.1-2	8 OCT 2020		4.1-2	22 FEB 2024
ENR	2.1-29	2 NOV 2023	ENR	2.1-29	22 FEB 2024
AD	2-VTCT-1-1	13 JUL 2023	AD	2-VTCT-1-1	22 FEB 2024
	2-VTCT-1-5	26 JAN 2023		2-VTCT-1-5	22 FEB 2024
	2-VTCT-1-6	1 DEC 2022		2-VTCT-1-6	22 FEB 2024
	2-VTCT-1-11	30 NOV 2023		2-VTCT-1-11	22 FEB 2024
	2-VTCT-2-1	27 FEB 2020		2-VTCT-2-1	22 FEB 2024
	2-VTCT-2-5	27 FEB 2020		2-VTCT-2-5	22 FEB 2024
	2-VTBP-1-1	10 SEP 2020		2-VTBP-1-1	22 FEB 2024
	2-VTBP-1-2	12 SEP 2019		2-VTBP-1-2	22 FEB 2024
	2-VTBP-1-6	12 SEP 2019		2-VTBP-1-6	22 FEB 2024
	2-VTPH-1-2	7 OCT 2021		2-VTPH-1-2	22 FEB 2024

**2. Hand amendments**

NIL

**3. Record entry of AIRAC AMDT on the page GEN 0.2-1.**

**4. The following publications have been incorporated in this AIRAC AMDT:**

AIP SUP	NIL
AIC	NIL
NOTAM	NIL

- END -





GEN 0.4 CHECKLIST OF AIP PAGES

Page	Date	Page	Date	Page	Date
<b>PART 1 - GENERAL (GEN)</b>					
<b>GEN 0.</b>		2.2-15	12 SEP 19	4.1-3	18 JUL 19
0.1-1	18 JUL 19	2.2-16	12 SEP 19	4.2-1	25 JAN 24
0.1-2	18 JUL 19	2.2-17	12 SEP 19	4.2-2	25 JAN 24
0.1-3	18 JUL 19	2.2-18	12 SEP 19	4.2-3	28 JAN 21
0.2-1	21 APR 22	2.3-1	18 JUL 19	4.3-1	5 NOV 20
<b>0.2-2</b>	<b>22 FEB 24</b>	2.3-2	18 JUL 19		
0.3-1	2 NOV 23	2.4-1	25 JAN 24	<b>PART 2 - EN-ROUTE (ENR)</b>	
0.3-2	2 NOV 23	2.4-2	25 JAN 24	<b>ENR 0.</b>	
0.3-3	2 NOV 23	2.4-3	25 JAN 24	0.6-1	30 DEC 21
0.3-4	2 NOV 23	2.5-1	25 MAR 21	0.6-2	18 JUL 19
0.3-5	2 NOV 23	2.5-2	25 MAR 21		
<b>0.4-1</b>	<b>22 FEB 24</b>	2.5-3	22 APR 21	<b>ENR 1.</b>	
<b>0.4-2</b>	<b>22 FEB 24</b>	2.5-4	18 MAY 23	1.1-1	18 JUL 19
<b>0.4-3</b>	<b>22 FEB 24</b>	2.6-1	18 JUL 19	1.2-1	28 DEC 23
<b>0.4-4</b>	<b>22 FEB 24</b>	2.6-2	18 JUL 19	1.2-2	28 DEC 23
<b>0.4-5</b>	<b>22 FEB 24</b>	2.6-3	18 JUL 19	1.2-3	28 DEC 23
<b>0.4-6</b>	<b>22 FEB 24</b>	2.7-1	18 JUL 19	1.2-4	28 DEC 23
<b>0.4-7</b>	<b>22 FEB 24</b>			1.3-1	18 JUL 19
<b>0.4-8</b>	<b>22 FEB 24</b>	<b>GEN 3.</b>		1.4-1	28 DEC 23
<b>0.4-9</b>	<b>22 FEB 24</b>	3.1-1	12 SEP 19	1.4-2	28 DEC 23
<b>0.4-10</b>	<b>22 FEB 24</b>	3.1-2	12 SEP 19	1.5-1	18 JUL 19
0.5-1	18 JUL 19	3.1-3	12 SEP 19	1.6-1	29 DEC 22
0.6-1	18 JUL 19	3.1-4	18 JUN 20	1.6-2	31 DEC 20
		3.1-5	18 JUN 20	1.6-3	29 DEC 22
		3.1-6	13 AUG 20	1.6-4	21 APR 22
<b>GEN 1.</b>		3.1-7	12 SEP 19	1.6-5	21 APR 22
1.1-1	18 JUL 19	3.2-1	2 DEC 21	1.6-6	21 APR 22
1.1-2	10 OCT 19	3.2-2	2 DEC 21	1.6-7	21 APR 22
1.1-3	28 JAN 21	<b>3.2-3</b>	<b>22 FEB 24</b>	1.6-8	21 APR 22
1.2-1	18 JUL 19	<b>3.2-4</b>	<b>22 FEB 24</b>	1.6-9	21 APR 22
1.2-2	18 JUL 19	<b>3.2-5</b>	<b>22 FEB 24</b>	1.6-10	21 APR 22
1.2-3	18 JUL 19	3.2-6	20 APR 23	1.6-11	21 APR 22
1.2-4	18 JUL 19	3.2-7	2 NOV 23	1.6-12	21 APR 22
1.3-1	18 JUL 19	3.2-8	18 MAY 23	1.6-13	21 APR 22
1.3-2	18 JUL 19	3.2-9	2 NOV 23	1.6-14	21 APR 22
1.3-3	18 JUL 19	3.2-10	15 JUN 23	1.6-15	21 APR 22
1.3-4	18 JUL 19	3.2-11	23 MAR 23	1.6-16	21 APR 22
1.3-5	18 JUL 19	3.2-12	23 MAR 23	1.6-17	21 APR 22
1.4-1	5 NOV 20	3.2-13	2 NOV 23	1.6-18	21 APR 22
1.4-2	31 DEC 20	3.2-14	23 MAR 23	1.6-19	21 APR 22
1.4-3	31 DEC 20	3.2-15	2 NOV 23	1.6-20	21 APR 22
1.4-4	31 DEC 20	3.2-16	2 NOV 23	1.7-1	18 JUL 19
1.4-5	31 DEC 20	3.2-17	2 NOV 23	1.7-2	18 JUL 19
1.5-1	3 DEC 20	3.2-18	15 JUN 23	1.7-3	18 JUL 19
1.6-1	8 OCT 20	3.2-19	2 NOV 23	1.8-1	30 DEC 21
1.6-2	8 OCT 20	3.2-20	2 NOV 23	1.8-2	25 MAR 21
1.6-3	8 OCT 20	3.2-21	25 JAN 24	1.8-3	30 DEC 21
1.7-1	30 NOV 23	3.2-22	23 MAR 23	1.8-4	30 DEC 21
1.7-2	30 NOV 23	3.3-1	4 NOV 21	1.8-5	30 DEC 21
1.7-3	30 NOV 23	3.3-2	18 JUL 19	1.8-6	25 MAR 21
1.7-4	30 NOV 23	3.3-3	18 JUL 19	1.8-7	22 APR 21
		3.3-4	18 JUL 19	1.8-8	2 NOV 23
<b>GEN 2.</b>		<b>3.4-1</b>	<b>22 FEB 24</b>	1.8-9	21 APR 22
2.1-1	16 JUL 20	<b>3.4-2</b>	<b>22 FEB 24</b>	1.9-1	21 APR 22
2.1-2	28 DEC 23	<b>3.4-3</b>	<b>22 FEB 24</b>	1.9-2	21 APR 22
2.2-1	12 SEP 19	<b>3.4-4</b>	<b>22 FEB 24</b>	1.9-3	12 AUG 21
2.2-2	12 SEP 19	<b>3.4-5</b>	<b>22 FEB 24</b>	1.9-4	25 MAR 21
2.2-3	12 SEP 19	3.5-1	30 NOV 23	1.9-5	25 MAR 21
2.2-4	12 SEP 19	3.5-2	28 DEC 23	1.9-6	25 MAR 21
2.2-5	23 MAR 23	3.5-3	30 NOV 23	1.9-7	25 MAR 21
2.2-6	23 MAR 23	3.5-4	30 NOV 23	1.9-8	25 MAR 21
2.2-7	12 SEP 19	3.5-5	30 NOV 23	1.9-9	2 NOV 23
2.2-8	12 SEP 19	3.6-1	18 JUL 19	1.9-10	2 NOV 23
2.2-9	12 SEP 19	3.6-2	18 JUL 19	1.9-11	21 APR 22
2.2-10	12 SEP 19	3.6-3	18 JUL 19	1.9-12	21 APR 22
2.2-11	12 SEP 19			1.10-1	2 NOV 23
2.2-12	12 SEP 19	<b>GEN 4.</b>		1.10-2	2 NOV 23
2.2-13	12 SEP 19	4.1-1	18 JUL 19	1.10-3	2 NOV 23
2.2-14	12 SEP 19	<b>4.1-2</b>	<b>22 FEB 24</b>	1.10-4	2 NOV 23

Page	Date	Page	Date	Page	Date
1.10-5	30 NOV 23	2.2-14	15 AUG 19	3.1-66	8 OCT 20
1.10-6	30 NOV 23	2.2-15	15 AUG 19	3.1-67	2 NOV 23
1.10-7	2 NOV 23	2.2-16	15 AUG 19	3.1-68	8 OCT 20
1.10-8	2 NOV 23	2.2-17	15 AUG 19	3.1-69	2 NOV 23
1.10-9	2 NOV 23			3.1-70	2 NOV 23
1.10-10	2 NOV 23			3.2-1	18 JUL 19
1.10-11	2 NOV 23	<b>ENR 3.</b>		3.3-1	2 NOV 23
1.10-12	30 NOV 23	3.1-1	2 NOV 23	3.3-2	2 NOV 23
1.10-13	2 NOV 23	3.1-2	2 NOV 23	3.3-3	23 APR 20
1.10-14	30 NOV 23	3.1-3	2 NOV 23	3.3-4	23 APR 20
1.10-15	30 NOV 23	3.1-4	2 NOV 23	3.3-5	23 APR 20
1.10-16	2 NOV 23	3.1-5	8 OCT 20	3.3-6	2 NOV 23
1.10-17	2 NOV 23	3.1-6	2 NOV 23	3.3-7	23 APR 20
1.11-1	18 JUL 19	3.1-7	2 NOV 23	3.3-8	8 OCT 20
1.12-1	18 JUL 19	3.1-8	2 NOV 23	3.3-9	2 NOV 23
1.12-2	18 JUL 19	3.1-9	2 NOV 23	3.3-10	2 NOV 23
1.12-3	18 JUL 19	3.1-10	2 NOV 23	3.3-11	8 OCT 20
1.13-1	18 JUL 19	3.1-11	30 NOV 23	3.3-12	2 NOV 23
1.14-1	18 JUL 19	3.1-12	2 NOV 23	3.3-13	2 NOV 23
1.14-2	18 JUL 19	3.1-13	8 OCT 20	3.3-14	2 NOV 23
1.14-3	18 JUL 19	3.1-14	8 OCT 20	3.3-15	2 NOV 23
1.14-4	18 JUL 19	3.1-15	8 OCT 20	3.3-16	2 NOV 23
1.14-5	18 JUL 19	3.1-16	2 NOV 23	3.3-17	2 NOV 23
1.14-6	18 JUL 19	3.1-17	2 NOV 23	3.3-18	2 NOV 23
1.14-7	18 JUL 19	3.1-18	2 NOV 23	3.3-19	2 NOV 23
		3.1-19	2 NOV 23	3.3-20	28 JAN 21
		3.1-20	8 OCT 20	3.3-21	2 NOV 23
<b>ENR 2.</b>		3.1-21	8 OCT 20	3.3-22	2 NOV 23
2.1-1	2 NOV 23	3.1-22	2 NOV 23	3.3-23	2 NOV 23
2.1-2	15 JUL 21	3.1-23	2 NOV 23	3.3-24	2 NOV 23
2.1-3	15 JUL 21	3.1-24	8 OCT 20	3.3-25	2 NOV 23
2.1-4	15 JUL 21	3.1-25	2 NOV 23	3.3-26	2 NOV 23
2.1-5	15 JUL 21	3.1-26	8 OCT 20	3.3-27	2 NOV 23
2.1-6	18 MAY 23	3.1-27	2 NOV 23	3.3-28	2 NOV 23
2.1-7	18 MAY 23	3.1-28	2 NOV 23	3.3-29	2 NOV 23
2.1-8	2 NOV 23	3.1-29	30 NOV 23	3.3-30	2 NOV 23
2.1-9	25 MAR 21	3.1-30	2 NOV 23	3.3-31	2 NOV 23
2.1-10	2 NOV 23	3.1-31	2 NOV 23	3.3-32	2 NOV 23
2.1-11	14 JUL 22	3.1-32	2 NOV 23	3.3-33	2 NOV 23
2.1-12	2 DEC 21	3.1-33	2 NOV 23	3.3-34	2 NOV 23
2.1-13	30 NOV 23	3.1-34	2 NOV 23	3.3-35	2 NOV 23
2.1-14	2 DEC 21	3.1-35	2 NOV 23	3.3-36	2 NOV 23
2.1-15	2 NOV 23	3.1-36	2 NOV 23	3.3-37	2 NOV 23
2.1-16	2 DEC 21	3.1-37	2 NOV 23	3.3-38	2 NOV 23
2.1-17	2 NOV 23	3.1-38	2 NOV 23	3.3-39	2 NOV 23
2.1-18	2 NOV 23	3.1-39	8 OCT 20	3.3-40	2 NOV 23
2.1-19	2 DEC 21	3.1-40	2 NOV 23	3.3-41	2 NOV 23
2.1-20	2 NOV 23	3.1-41	2 NOV 23	3.3-42	21 APR 22
2.1-21	2 NOV 23	3.1-42	8 OCT 20	3.3-43	21 APR 22
2.1-22	2 NOV 23	3.1-43	2 NOV 23	3.3-44	21 APR 22
2.1-23	2 NOV 23	3.1-44	2 NOV 23	3.3-45	2 NOV 23
2.1-24	2 NOV 23	3.1-45	8 OCT 20	3.3-46	2 NOV 23
2.1-25	2 NOV 23	3.1-46	2 NOV 23	3.3-47	21 APR 22
2.1-26	2 DEC 21	3.1-47	2 NOV 23	3.3-48	21 APR 22
2.1-27	2 DEC 21	3.1-48	2 NOV 23	3.3-49	2 NOV 23
2.1-28	2 NOV 23	3.1-49	2 NOV 23	3.3-50	2 NOV 23
<b>2.1-29</b>	<b>22 FEB 24</b>	3.1-50	2 NOV 23	3.3-51	2 NOV 23
2.1-30	2 DEC 21	3.1-51	2 NOV 23	3.4-1	18 JUL 19
2.1-31	22 APR 21	3.1-52	2 NOV 23	3.5-1	19 MAY 22
2.2-1	15 AUG 19	3.1-53	2 NOV 23	3.6-1	18 JUL 19
2.2-2	15 AUG 19	3.1-54	2 NOV 23		
2.2-3	12 SEP 19	3.1-55	8 OCT 20		
2.2-4	12 SEP 19	3.1-56	2 NOV 23	<b>ENR 4.</b>	
2.2-5	15 AUG 19	3.1-57	8 OCT 20	4.1-1	2 NOV 23
2.2-6	18 JUL 19	3.1-58	2 NOV 23	4.1-2	25 MAR 21
2.2-7	18 JUL 19	3.1-59	2 NOV 23	4.1-3	25 MAR 21
2.2-8	15 AUG 19	3.1-60	8 OCT 20	4.1-4	25 MAR 21
2.2-9	12 SEP 19	3.1-61	2 NOV 23	4.1-5	25 MAR 21
2.2-10	12 SEP 19	3.1-62	2 NOV 23	4.1-6	25 MAR 21
2.2-11	18 JUL 19	3.1-63	2 NOV 23	4.1-7	29 DEC 22
2.2-12	15 AUG 19	3.1-64	30 NOV 23	4.1-8	22 APR 21
2.2-13	15 AUG 19	3.1-65	2 NOV 23	4.1-9	22 APR 21

Page	Date	Page	Date	Page	Date
4.1-10	6 OCT 22	1.3-3	6 OCT 22	2-VTBD-6-24	8 OCT 20
4.1-11	23 FEB 23	1.3-4	10 OCT 19	2-VTBD-6-25	18 MAY 23
4.1-12	23 MAR 23	1.4-1	18 JUL 19	2-VTBD-6-26	18 JUL 19
4.2-1	18 JUL 19	1.5-1	25 JAN 24	2-VTBD-6-27	18 JUL 19
4.3-1	12 AUG 21			2-VTBD-6-28	18 JUL 19
4.4-1	26 JAN 23			2-VTBD-6-29	18 JUL 19
4.4-2	26 JAN 23			2-VTBD-6-30	18 JUL 19
4.4-3	26 JAN 23			2-VTBD-6-31	18 MAY 23
4.5-1	17 JUN 21			2-VTBD-6-32	8 OCT 20
				2-VTBD-6-33	8 OCT 20
<b>ENR 5.</b>		<b>AD 2.</b>		2-VTBD-6-34	8 OCT 20
5.1-1	5 DEC 19	<b>BANGKOK/DON MUEANG</b>		2-VTBD-6-35	8 OCT 20
5.1-2	5 DEC 19	<b>INTERNATIONAL AIRPORT</b>		2-VTBD-6-36	8 OCT 20
5.1-3	30 NOV 23	2-VTBD-1-1	13 JUL 23	2-VTBD-6-37	8 OCT 20
5.1-4	30 NOV 23	2-VTBD-1-2	7 OCT 21	2-VTBD-6-39	18 MAY 23
5.1-5	30 NOV 23	2-VTBD-1-3	21 APR 22	2-VTBD-6-40	18 JUL 19
5.1-6	30 NOV 23	2-VTBD-1-4	20 MAY 21	2-VTBD-6-41	18 JUL 19
5.1-7	30 NOV 23	2-VTBD-1-5	14 JUL 22	2-VTBD-6-42	18 JUL 19
5.1-8	5 DEC 19	2-VTBD-1-6	23 MAR 23	2-VTBD-6-43	18 JUL 19
5.1-9	18 JUN 20	2-VTBD-1-7	18 MAY 23	2-VTBD-6-44	18 JUL 19
5.1-10	5 DEC 19	2-VTBD-1-8	18 MAY 23	2-VTBD-6-45	18 MAY 23
5.1-11	10 AUG 23	2-VTBD-1-9	3 NOV 22	2-VTBD-6-46	8 OCT 20
5.1-12	20 MAY 21	2-VTBD-1-10	18 MAY 23	2-VTBD-6-47	8 OCT 20
5.1-13	20 MAY 21	2-VTBD-1-11	7 OCT 21	2-VTBD-6-48	8 OCT 20
5.1-14	20 MAY 21	2-VTBD-1-12	20 MAY 21	2-VTBD-6-49	8 OCT 20
5.1-15	5 DEC 19	2-VTBD-1-13	20 MAY 21	2-VTBD-6-50	8 OCT 20
5.1-16	18 JUN 20	2-VTBD-1-14	7 OCT 21	2-VTBD-6-51	8 OCT 20
5.1-17	5 DEC 19	2-VTBD-1-15	20 MAY 21	2-VTBD-7-1	18 MAY 23
5.1-18	30 NOV 23	2-VTBD-1-16	20 MAY 21	2-VTBD-7-2	8 OCT 20
5.1-19	5 DEC 19	2-VTBD-1-17	20 MAY 21	2-VTBD-7-3	21 APR 22
5.1-20	2 JAN 20	2-VTBD-1-18	20 MAY 21	2-VTBD-7-4	8 OCT 20
5.1-21	5 DEC 19	2-VTBD-1-19	20 MAY 21	2-VTBD-7-5	8 OCT 20
5.2-1	18 JUL 19	2-VTBD-1-20	20 MAY 21	2-VTBD-7-6	8 OCT 20
5.3-1	18 JUL 19	2-VTBD-1-21	20 MAY 21	2-VTBD-7-7	8 OCT 20
5.4-1	18 JUL 19	2-VTBD-1-22	28 JAN 21	2-VTBD-7-8	8 OCT 20
5.5-1	18 JUL 19	2-VTBD-1-23	20 MAY 21	2-VTBD-7-9	18 MAY 23
5.6-1	18 JUL 19	2-VTBD-1-24	20 MAY 21	2-VTBD-7-10	4 NOV 21
		2-VTBD-1-25	20 MAY 21	2-VTBD-7-11	21 APR 22
		2-VTBD-1-26	4 NOV 21	2-VTBD-7-12	4 NOV 21
		2-VTBD-1-27	4 NOV 21	2-VTBD-7-13	4 NOV 21
		2-VTBD-1-28	20 MAY 21	2-VTBD-7-14	4 NOV 21
		2-VTBD-1-29	20 MAY 21	2-VTBD-7-15	4 NOV 21
		2-VTBD-1-30	15 JUN 23	2-VTBD-7-16	4 NOV 21
		2-VTBD-1-31	18 MAY 23	2-VTBD-8-1	18 MAY 23
<b>ENR 6.</b>		2-VTBD-1-32	15 JUN 23	2-VTBD-8-3	18 MAY 23
6-1	25 JAN 24	2-VTBD-1-33	15 JUN 23	2-VTBD-8-5	15 JUN 23
6-3	25 JAN 24	2-VTBD-2-1	18 MAY 23	2-VTBD-8-7	18 MAY 23
		2-VTBD-2-3	20 MAY 21	2-VTBD-8-9	18 MAY 23
		2-VTBD-2-4	28 JAN 21	2-VTBD-8-10	18 JUL 19
		2-VTBD-2-5	3 NOV 22	2-VTBD-8-11	18 MAY 23
<b>PART 3 - AERODROMES (AD)</b>		2-VTBD-3-1	18 JUL 19	2-VTBD-8-13	18 MAY 23
<b>AD 0.</b>		2-VTBD-3-3	18 JUL 19	2-VTBD-8-14	18 JUL 19
0.6-1	21 MAY 20	2-VTBD-3-5	18 JUL 19	2-VTBD-8-15	18 JUL 19
0.6-2	18 JUL 19	2-VTBD-6-1	18 MAY 23	2-VTBD-8-17	18 MAY 23
0.6-3	18 JUN 20	2-VTBD-6-2	18 JUL 19	2-VTBD-8-18	18 JUL 19
0.6-4	18 JUN 20	2-VTBD-6-3	18 JUL 19	2-VTBD-8-19	18 JUL 19
0.6-5	18 JUL 19	2-VTBD-6-4	18 JUL 19	2-VTBD-8-21	18 MAY 23
0.6-6	18 JUL 19	2-VTBD-6-5	18 JUL 19	2-VTBD-8-22	18 MAY 23
0.6-7	18 JUL 19	2-VTBD-6-6	18 JUL 19	2-VTBD-8-23	4 NOV 21
0.6-8	18 JUL 19	2-VTBD-6-7	18 JUL 19	2-VTBD-8-25	18 MAY 23
0.6-9	18 JUL 19	2-VTBD-6-8	8 OCT 20	2-VTBD-8-26	4 NOV 21
0.6-10	18 JUL 19	2-VTBD-6-9	8 OCT 20	2-VTBD-8-27	18 MAY 23
0.6-11	18 JUN 20	2-VTBD-6-10	8 OCT 20	2-VTBD-8-28	4 NOV 21
0.6-12	18 JUN 20	2-VTBD-6-11	8 OCT 20	2-VTBD-8-29	18 MAY 23
0.6-13	18 JUN 20	2-VTBD-6-12	8 OCT 20	2-VTBD-8-30	18 MAY 23
0.6-14	18 JUN 20	2-VTBD-6-13	18 MAY 23	2-VTBD-8-31	18 MAY 23
0.6-15	18 JUN 20	2-VTBD-6-14	18 JUL 19	2-VTBD-8-32	18 MAY 23
0.6-16	18 JUN 20	2-VTBD-6-15	18 JUL 19		
0.6-17	18 JUN 20	2-VTBD-6-16	18 JUL 19	<b>CHIANG MAI/CHIANG MAI</b>	
0.6-18	18 JUN 20	2-VTBD-6-17	18 JUL 19	<b>INTERNATIONAL AIRPORT</b>	
0.6-19	18 JUN 20	2-VTBD-6-18	18 JUL 19	2-VTCC-1-1	28 DEC 23
		2-VTBD-6-19	18 MAY 23		
		2-VTBD-6-20	8 OCT 20		
<b>AD 1.</b>		2-VTBD-6-21	8 OCT 20		
1.1-1	28 JAN 21	2-VTBD-6-22	8 OCT 20		
1.1-2	28 JAN 21	2-VTBD-6-23	8 OCT 20		
1.2-1	20 APR 23				
1.2-2	20 APR 23				
1.3-1	25 JAN 24				
1.3-2	6 OCT 22				

Page	Date	Page	Date	Page	Date
2-VTCC-1-2	13 JUL 23	2-VTCC-7-19	21 APR 22	2-VTSP-1-17	17 JUN 21
2-VTCC-1-3	28 DEC 23	2-VTCC-7-20	21 APR 22	2-VTSP-1-18	26 JAN 23
2-VTCC-1-4	28 DEC 23	2-VTCC-7-21	21 APR 22	2-VTSP-1-19	25 JAN 24
2-VTCC-1-5	18 MAY 23	2-VTCC-8-1	21 APR 22	2-VTSP-1-20	25 JAN 24
2-VTCC-1-6	10 AUG 23	2-VTCC-8-2	21 APR 22	2-VTSP-1-21	25 JAN 24
2-VTCC-1-7	2 NOV 23	2-VTCC-8-3	21 APR 22	2-VTSP-1-22	25 JAN 24
2-VTCC-1-8	18 MAY 23	2-VTCC-8-4	21 APR 22	2-VTSP-1-23	25 JAN 24
2-VTCC-1-9	18 MAY 23	2-VTCC-8-5	21 APR 22	2-VTSP-1-24	25 JAN 24
2-VTCC-1-10	7 DEC 17	2-VTCC-8-6	21 APR 22	2-VTSP-1-25	25 JAN 24
2-VTCC-1-11	7 DEC 17	2-VTCC-8-7	21 APR 22	2-VTSP-2-1	25 JAN 24
2-VTCC-1-12	12 SEP 19	2-VTCC-8-8	21 APR 22	2-VTSP-2-3	25 JAN 24
2-VTCC-1-13	28 JAN 21	2-VTCC-8-9	21 APR 22	2-VTSP-2-4	25 JAN 24
2-VTCC-1-14	18 MAY 23	2-VTCC-8-11	21 APR 22	2-VTSP-2-5	25 JAN 24
2-VTCC-1-15	10 AUG 23	2-VTCC-8-12	6 OCT 22	2-VTSP-3-1	18 JUL 19
2-VTCC-1-16	10 AUG 23	2-VTCC-8-13	21 APR 22	2-VTSP-3-3	18 JUL 19
2-VTCC-1-17	10 AUG 23	2-VTCC-8-14	21 APR 22	2-VTSP-6-1	20 MAY 21
2-VTCC-1-18	10 AUG 23			2-VTSP-6-2	18 JUL 19
2-VTCC-1-19	10 AUG 23	<b>CHIANG RAI / Mae Fah Luang-CHIANG</b>		2-VTSP-6-3	18 JUL 19
2-VTCC-1-20	10 AUG 23	<b>RAI INTERNATIONAL AIRPORT</b>		2-VTSP-6-5	20 MAY 21
2-VTCC-1-21	10 AUG 23	<b>2-VTCT-1-1</b>	<b>22 FEB 24</b>	2-VTSP-6-6	18 JUL 19
2-VTCC-1-22	28 DEC 23	2-VTCT-1-2	14 JUL 22	2-VTSP-6-7	18 JUL 19
2-VTCC-1-23	2 NOV 23	2-VTCT-1-3	14 JUL 22	2-VTSP-6-8	18 JUL 19
2-VTCC-2-1	28 DEC 23	2-VTCT-1-4	1 DEC 22	2-VTSP-6-9	20 MAY 21
2-VTCC-2-3	28 DEC 23	<b>2-VTCT-1-5</b>	<b>22 FEB 24</b>	2-VTSP-6-10	18 JUL 19
2-VTCC-2-5	28 DEC 23	<b>2-VTCT-1-6</b>	<b>22 FEB 24</b>	2-VTSP-6-11	18 JUL 19
2-VTCC-3-1	7 OCT 21	2-VTCT-1-7	2 NOV 23	2-VTSP-6-12	18 JUL 19
2-VTCC-5-1	2 NOV 23	2-VTCT-1-8	1 DEC 22	2-VTSP-7-1	20 MAY 21
2-VTCC-6-1	18 JUL 19	2-VTCT-1-9	1 DEC 22	2-VTSP-7-2	18 JUL 19
2-VTCC-6-2	18 JUL 19	2-VTCT-1-10	30 NOV 23	2-VTSP-7-3	18 JUL 19
2-VTCC-6-3	18 JUL 19	<b>2-VTCT-1-11</b>	<b>22 FEB 24</b>	2-VTSP-7-4	18 JUL 19
2-VTCC-6-5	18 JUL 19	<b>2-VTCT-2-1</b>	<b>22 FEB 24</b>	2-VTSP-7-5	18 JUL 19
2-VTCC-6-6	18 JUL 19	2-VTCT-2-3	27 FEB 20	2-VTSP-7-7	20 MAY 21
2-VTCC-6-7	18 JUL 19	<b>2-VTCT-2-5</b>	<b>22 FEB 24</b>	2-VTSP-7-8	18 JUL 19
2-VTCC-6-9	21 APR 22	2-VTCT-3-1	18 JUL 19	2-VTSP-7-9	18 JUL 19
2-VTCC-6-10	6 OCT 22	2-VTCT-6-1	2 NOV 23	2-VTSP-7-10	18 JUL 19
2-VTCC-6-11	21 APR 22	2-VTCT-6-3	2 NOV 23	2-VTSP-7-11	18 JUL 19
2-VTCC-6-12	6 OCT 22	2-VTCT-6-4	2 NOV 23	2-VTSP-8-1	2 NOV 23
2-VTCC-6-13	21 APR 22	2-VTCT-6-5	2 NOV 23	2-VTSP-8-3	2 NOV 23
2-VTCC-6-14	21 APR 22	2-VTCT-8-1	2 NOV 23	2-VTSP-8-5	2 NOV 23
2-VTCC-6-15	6 OCT 22	2-VTCT-8-2	2 NOV 23	2-VTSP-8-7	2 NOV 23
2-VTCC-6-17	21 APR 22	2-VTCT-8-3	2 NOV 23	2-VTSP-8-9	2 NOV 23
2-VTCC-6-18	6 OCT 22	2-VTCT-8-4	2 NOV 23	2-VTSP-8-11	2 NOV 23
2-VTCC-6-19	21 APR 22	2-VTCT-8-5	2 NOV 23	2-VTSP-8-12	2 NOV 23
2-VTCC-6-20	21 APR 22	2-VTCT-8-6	2 NOV 23	2-VTSP-8-13	2 NOV 23
2-VTCC-6-21	21 APR 22	2-VTCT-8-7	2 NOV 23	2-VTSP-8-14	2 NOV 23
2-VTCC-6-22	6 OCT 22	2-VTCT-8-8	2 NOV 23	2-VTSP-8-15	2 NOV 23
2-VTCC-6-23	21 APR 22	2-VTCT-8-9	2 NOV 23	2-VTSP-8-16	2 NOV 23
2-VTCC-6-24	21 APR 22	2-VTCT-8-10	2 NOV 23	2-VTSP-8-17	17 JUN 21
2-VTCC-6-25	21 APR 22	2-VTCT-8-11	2 NOV 23	2-VTSP-8-19	2 NOV 23
2-VTCC-6-26	6 OCT 22	2-VTCT-8-12	2 NOV 23	2-VTSP-8-20	2 NOV 23
2-VTCC-6-27	21 APR 22	2-VTCT-8-13	2 NOV 23	2-VTSP-8-21	17 JUN 21
2-VTCC-6-28	6 OCT 22	2-VTCT-8-14	2 NOV 23		
2-VTCC-6-29	21 APR 22			<b>BANGKOK/SUVARNABHUMI</b>	
2-VTCC-6-30	6 OCT 22	<b>PHUKET / PHUKET INTERNATIONAL</b>		<b>INTERNATIONAL AIRPORT</b>	
2-VTCC-7-1	21 APR 22	<b>AIRPORT</b>		2-VTBS-1-1	2 NOV 23
2-VTCC-7-2	21 APR 22	2-VTSP-1-1	13 JUL 23	2-VTBS-1-2	30 DEC 21
2-VTCC-7-3	21 APR 22	2-VTSP-1-2	25 JAN 24	2-VTBS-1-3	2 NOV 23
2-VTCC-7-4	21 APR 22	2-VTSP-1-3	17 JUN 21	2-VTBS-1-4	30 NOV 23
2-VTCC-7-5	21 APR 22	2-VTSP-1-4	25 JAN 24	2-VTBS-1-5	2 NOV 23
2-VTCC-7-6	21 APR 22	2-VTSP-1-5	25 JAN 24	2-VTBS-1-6	2 NOV 23
2-VTCC-7-7	21 APR 22	2-VTSP-1-6	17 JUN 21	2-VTBS-1-7	2 NOV 23
2-VTCC-7-8	21 APR 22	2-VTSP-1-7	17 JUN 21	2-VTBS-1-8	2 NOV 23
2-VTCC-7-9	21 APR 22	2-VTSP-1-8	17 JUN 21	2-VTBS-1-9	2 NOV 23
2-VTCC-7-11	21 APR 22	2-VTSP-1-9	30 DEC 21	2-VTBS-1-10	2 NOV 23
2-VTCC-7-12	21 APR 22	2-VTSP-1-10	17 JUN 21	2-VTBS-1-11	2 NOV 23
2-VTCC-7-13	21 APR 22	2-VTSP-1-11	17 JUN 21	2-VTBS-1-12	2 NOV 23
2-VTCC-7-14	21 APR 22	2-VTSP-1-12	25 JAN 24	2-VTBS-1-13	30 NOV 23
2-VTCC-7-15	21 APR 22	2-VTSP-1-13	25 JAN 24	2-VTBS-1-14	2 NOV 23
2-VTCC-7-16	21 APR 22	2-VTSP-1-14	17 JUN 21	2-VTBS-1-15	2 NOV 23
2-VTCC-7-17	21 APR 22	2-VTSP-1-15	17 JUN 21	2-VTBS-1-16	2 NOV 23
2-VTCC-7-18	21 APR 22	2-VTSP-1-16	17 JUN 21	2-VTBS-1-17	2 NOV 23



Page	Date	Page	Date	Page	Date
2-VTBS-1-18	2 NOV 23	2-VTBS-2-19	30 NOV 23	2-VTBS-7-16	8 OCT 20
2-VTBS-1-19	2 NOV 23	2-VTBS-2-21	30 NOV 23	2-VTBS-8-1	2 NOV 23
2-VTBS-1-20	2 NOV 23	2-VTBS-3-1	18 JUL 19	2-VTBS-8-2	2 NOV 23
2-VTBS-1-21	2 NOV 23	2-VTBS-3-3	18 JUL 19	2-VTBS-8-3	2 NOV 23
2-VTBS-1-22	2 NOV 23	2-VTBS-3-5	18 JUL 19	2-VTBS-8-4	2 NOV 23
2-VTBS-1-23	2 NOV 23	2-VTBS-3-7	18 JUL 19	2-VTBS-8-5	2 NOV 23
2-VTBS-1-24	2 NOV 23	2-VTBS-6-1	2 NOV 23	2-VTBS-8-6	2 NOV 23
2-VTBS-1-25	2 NOV 23	2-VTBS-6-2	18 JUL 19	2-VTBS-8-7	2 NOV 23
2-VTBS-1-26	2 NOV 23	2-VTBS-6-3	18 JUL 19	2-VTBS-8-8	2 NOV 23
2-VTBS-1-27	2 NOV 23	2-VTBS-6-4	18 JUL 19	2-VTBS-8-9	2 NOV 23
2-VTBS-1-28	2 NOV 23	2-VTBS-6-5	18 JUL 19	2-VTBS-8-10	2 NOV 23
2-VTBS-1-29	2 NOV 23	2-VTBS-6-6	18 JUL 19	2-VTBS-8-11	2 NOV 23
2-VTBS-1-30	2 NOV 23	2-VTBS-6-7	18 JUL 19	2-VTBS-8-12	2 NOV 23
2-VTBS-1-31	2 NOV 23	2-VTBS-6-9	2 NOV 23	2-VTBS-8-13	2 NOV 23
2-VTBS-1-32	2 NOV 23	2-VTBS-6-10	8 OCT 20	2-VTBS-8-14	2 NOV 23
2-VTBS-1-33	2 NOV 23	2-VTBS-6-11	8 OCT 20	2-VTBS-8-15	2 NOV 23
2-VTBS-1-34	2 NOV 23	2-VTBS-6-12	8 OCT 20	2-VTBS-8-16	2 NOV 23
2-VTBS-1-35	2 NOV 23	2-VTBS-6-13	8 OCT 20	2-VTBS-8-17	2 NOV 23
2-VTBS-1-36	2 NOV 23	2-VTBS-6-14	8 OCT 20	2-VTBS-8-18	2 NOV 23
2-VTBS-1-37	2 NOV 23	2-VTBS-6-15	2 NOV 23	2-VTBS-8-19	2 NOV 23
2-VTBS-1-38	30 NOV 23	2-VTBS-6-16	18 JUL 19	2-VTBS-8-20	2 NOV 23
2-VTBS-1-39	2 NOV 23	2-VTBS-6-17	18 JUL 19	2-VTBS-9-1	18 JUL 19
2-VTBS-1-40	2 NOV 23	2-VTBS-6-18	18 JUL 19		
2-VTBS-1-41	2 NOV 23	2-VTBS-6-19	18 JUL 19	<b>RAYONG / U-TAPAO RAYONG</b>	
2-VTBS-1-42	2 NOV 23	2-VTBS-6-20	18 JUL 19	<b>PATTAYA INTERNATIONAL AIRPORT</b>	
2-VTBS-1-43	2 NOV 23	2-VTBS-6-21	18 JUL 19	2-VTBU-1-1	22 APR 21
2-VTBS-1-44	2 NOV 23	2-VTBS-6-23	2 NOV 23	2-VTBU-1-2	17 JUN 21
2-VTBS-1-45	2 NOV 23	2-VTBS-6-24	8 OCT 20	2-VTBU-1-3	12 AUG 21
2-VTBS-1-46	2 NOV 23	2-VTBS-6-25	8 OCT 20	2-VTBU-1-4	12 AUG 21
2-VTBS-1-47	2 NOV 23	2-VTBS-6-26	8 OCT 20	2-VTBU-1-5	17 JUN 21
2-VTBS-1-48	2 NOV 23	2-VTBS-6-27	8 OCT 20	2-VTBU-1-6	28 DEC 23
2-VTBS-1-49	2 NOV 23	2-VTBS-6-28	8 OCT 20	2-VTBU-1-7	16 JUN 22
2-VTBS-1-50	2 NOV 23	2-VTBS-6-29	2 NOV 23	2-VTBU-1-8	16 JUN 22
2-VTBS-1-51	2 NOV 23	2-VTBS-6-30	18 JUL 19	2-VTBU-1-9	23 MAR 23
2-VTBS-1-52	2 NOV 23	2-VTBS-6-31	18 JUL 19	2-VTBU-1-10	14 JUL 22
2-VTBS-1-53	2 NOV 23	2-VTBS-6-32	18 JUL 19	2-VTBU-2-1	16 JUN 22
2-VTBS-1-54	2 NOV 23	2-VTBS-6-33	18 JUL 19	2-VTBU-2-3	16 JUN 22
2-VTBS-1-55	2 NOV 23	2-VTBS-6-34	18 JUL 19	2-VTBU-2-4	18 JUL 19
2-VTBS-1-56	2 NOV 23	2-VTBS-6-35	2 NOV 23	2-VTBU-3-1	18 JUL 19
2-VTBS-1-57	2 NOV 23	2-VTBS-6-36	8 OCT 20	2-VTBU-6-1	16 JUN 22
2-VTBS-1-58	2 NOV 23	2-VTBS-6-37	8 OCT 20	2-VTBU-6-2	18 JUL 19
2-VTBS-1-59	2 NOV 23	2-VTBS-6-38	8 OCT 20	2-VTBU-6-3	16 JUN 22
2-VTBS-1-60	2 NOV 23	2-VTBS-6-39	8 OCT 20	2-VTBU-6-4	18 JUL 19
2-VTBS-1-61	2 NOV 23	2-VTBS-6-40	8 OCT 20	2-VTBU-8-1	23 MAR 23
2-VTBS-1-62	2 NOV 23	2-VTBS-6-41	2 NOV 23	2-VTBU-8-3	16 JUN 22
2-VTBS-1-63	2 NOV 23	2-VTBS-6-42	18 JUL 19	2-VTBU-8-4	18 JUL 19
2-VTBS-1-64	2 NOV 23	2-VTBS-6-43	18 JUL 19	2-VTBU-8-5	23 MAR 23
2-VTBS-1-65	2 NOV 23	2-VTBS-6-44	18 JUL 19	2-VTBU-8-6	18 JUL 19
2-VTBS-1-66	2 NOV 23	2-VTBS-6-45	18 JUL 19	2-VTBU-8-7	16 JUN 22
2-VTBS-1-67	2 NOV 23	2-VTBS-6-46	18 JUL 19	2-VTBU-8-8	16 JUN 22
2-VTBS-1-68	21 APR 22	2-VTBS-6-47	2 NOV 23	2-VTBU-8-9	14 JUL 22
2-VTBS-1-69	2 NOV 23	2-VTBS-6-48	8 OCT 20	2-VTBU-8-10	16 JUN 22
2-VTBS-1-70	21 APR 22	2-VTBS-6-49	8 OCT 20	2-VTBU-8-11	16 JUN 22
2-VTBS-1-71	21 APR 22	2-VTBS-6-50	8 OCT 20	2-VTBU-8-12	16 JUN 22
2-VTBS-1-72	21 APR 22	2-VTBS-6-51	8 OCT 20	2-VTBU-8-13	16 JUN 22
2-VTBS-1-73	2 NOV 23	2-VTBS-6-52	8 OCT 20	2-VTBU-8-14	16 JUN 22
2-VTBS-1-74	30 NOV 23	2-VTBS-7-1	2 NOV 23		
2-VTBS-1-75	18 MAY 23	2-VTBS-7-2	8 OCT 20	<b>SONGKHLA / HAT YAI</b>	
2-VTBS-1-76	2 NOV 23	2-VTBS-7-3	8 OCT 20	<b>INTERNATIONAL AIRPORT</b>	
2-VTBS-1-77	2 NOV 23	2-VTBS-7-4	8 OCT 20	2-VTSS-1-1	13 JUL 23
2-VTBS-2-1	30 NOV 23	2-VTBS-7-5	8 OCT 20	2-VTSS-1-2	13 JUL 23
2-VTBS-2-3	30 NOV 23	2-VTBS-7-6	8 OCT 20	2-VTSS-1-3	2 NOV 23
2-VTBS-2-4	2 NOV 23	2-VTBS-7-7	8 OCT 20	2-VTSS-1-4	2 NOV 23
2-VTBS-2-5	2 NOV 23	2-VTBS-7-8	8 OCT 20	2-VTSS-1-5	21 APR 22
2-VTBS-2-6	2 NOV 23	2-VTBS-7-9	2 NOV 23	2-VTSS-1-6	22 APR 21
2-VTBS-2-7	30 NOV 23	2-VTBS-7-10	8 OCT 20	2-VTSS-1-7	16 JUL 20
2-VTBS-2-9	30 NOV 23	2-VTBS-7-11	8 OCT 20	2-VTSS-1-8	16 JUL 20
2-VTBS-2-11	30 NOV 23	2-VTBS-7-12	8 OCT 20	2-VTSS-1-9	12 SEP 19
2-VTBS-2-13	30 NOV 23	2-VTBS-7-13	8 OCT 20	2-VTSS-1-10	12 SEP 19
2-VTBS-2-15	30 NOV 23	2-VTBS-7-14	8 OCT 20	2-VTSS-1-11	12 SEP 19
2-VTBS-2-17	30 NOV 23	2-VTBS-7-15	8 OCT 20	2-VTSS-1-12	12 SEP 19

Page	Date
2-VTSS-1-13	12 SEP 19
2-VTSS-1-14	2 NOV 23
2-VTSS-1-15	2 NOV 23
2-VTSS-1-16	2 NOV 23
2-VTSS-2-1	2 NOV 23
2-VTSS-2-3	7 NOV 19
2-VTSS-2-5	30 DEC 21
2-VTSS-3-1	7 NOV 19
2-VTSS-5-1	18 JUL 19
2-VTSS-8-1	13 AUG 20
2-VTSS-8-3	15 JUN 23
2-VTSS-8-5	15 JUN 23
2-VTSS-8-7	15 JUN 23
2-VTSS-8-8	15 JUN 23
2-VTSS-8-9	15 JUN 23
2-VTSS-8-10	15 JUN 23

**BURIRAM / BURI RAM AIRPORT**

2-VTUA-1-1	29 DEC 22
2-VTUA-1-2	26 JAN 23
2-VTUA-1-3	26 JAN 23
2-VTUA-1-4	26 JAN 23
2-VTUA-1-5	26 JAN 23
2-VTUA-1-6	30 NOV 23
2-VTUA-1-7	30 NOV 23
2-VTUA-1-8	30 NOV 23
2-VTUA-2-1	29 DEC 22
2-VTUA-2-2	29 DEC 22
2-VTUA-2-3	29 DEC 22
2-VTUA-2-4	29 DEC 22
2-VTUA-2-5	29 DEC 22
2-VTUA-3-1	29 DEC 22
2-VTUA-8-1	17 JUN 21
2-VTUA-8-3	17 JUN 21
2-VTUA-8-4	18 JUL 19
2-VTUA-8-5	17 JUN 21
2-VTUA-8-6	18 JUL 19
2-VTUA-8-7	17 JUN 21
2-VTUA-8-8	18 JUL 19
2-VTUA-8-9	17 JUN 21
2-VTUA-8-10	18 JUL 19
2-VTUA-8-11	18 JUL 19
2-VTUA-8-12	18 JUL 19
2-VTUA-8-13	17 JUN 21
2-VTUA-8-14	20 MAY 21
2-VTUA-8-15	20 MAY 21
2-VTUA-8-17	17 JUN 21
2-VTUA-8-18	20 MAY 21
2-VTUA-8-19	20 MAY 21

**CHUMPHON / CHUMPHON AIRPORT**

2-VTSE-1-1	20 APR 23
2-VTSE-1-2	20 APR 23
2-VTSE-1-3	20 APR 23
2-VTSE-1-4	20 APR 23
2-VTSE-1-5	20 APR 23
2-VTSE-1-6	20 APR 23
2-VTSE-1-7	30 NOV 23
2-VTSE-1-8	30 NOV 23
2-VTSE-1-9	20 APR 23
2-VTSE-2-1	20 APR 23
2-VTSE-2-2	20 APR 23
2-VTSE-2-3	20 APR 23
2-VTSE-2-4	20 APR 23
2-VTSE-2-5	20 APR 23
2-VTSE-2-6	20 APR 23
2-VTSE-3-1	20 APR 23
2-VTSE-8-1	17 JUN 21
2-VTSE-8-3	17 JUN 21
2-VTSE-8-5	17 JUN 21
2-VTSE-8-6	18 JUL 19

Page	Date
2-VTSE-8-7	17 JUN 21
2-VTSE-8-8	18 JUL 19
2-VTSE-8-9	17 JUN 21
2-VTSE-8-10	18 JUL 19
2-VTSE-8-11	17 JUN 21
2-VTSE-8-12	18 JUL 19
2-VTSE-8-13	18 JUL 19
2-VTSE-8-15	4 NOV 21
2-VTSE-8-16	15 JUL 21
2-VTSE-8-17	4 NOV 21
2-VTSE-8-18	15 JUL 21
2-VTSE-9-1	17 JUN 21
2-VTSE-9-2	31 DEC 20
2-VTSE-9-3	17 JUN 21
2-VTSE-9-4	31 DEC 20
2-VTSE-9-5	17 JUN 21
2-VTSE-9-6	31 DEC 20

**KHON KAEN / KHON KAEN AIRPORT**

2-VTUK-1-1	29 DEC 22
2-VTUK-1-2	29 DEC 22
2-VTUK-1-3	29 DEC 22
2-VTUK-1-4	29 DEC 22
2-VTUK-1-5	29 DEC 22
2-VTUK-1-6	30 NOV 23
2-VTUK-1-7	30 NOV 23
2-VTUK-1-8	30 NOV 23
2-VTUK-2-1	29 DEC 22
2-VTUK-2-3	29 DEC 22
2-VTUK-6-1	21 APR 22
2-VTUK-6-2	4 NOV 21
2-VTUK-6-3	4 NOV 21
2-VTUK-6-5	21 APR 22
2-VTUK-6-6	21 APR 22
2-VTUK-6-7	4 NOV 21
2-VTUK-8-1	4 NOV 21
2-VTUK-8-3	4 NOV 21
2-VTUK-8-5	21 APR 22
2-VTUK-8-6	4 NOV 21
2-VTUK-8-7	21 APR 22
2-VTUK-8-8	4 NOV 21
2-VTUK-8-9	21 APR 22
2-VTUK-8-10	21 APR 22
2-VTUK-8-11	4 NOV 21
2-VTUK-8-13	21 APR 22
2-VTUK-8-14	4 NOV 21
2-VTUK-8-15	4 NOV 21
2-VTUK-9-1	13 AUG 20
2-VTUK-9-2	27 FEB 20
2-VTUK-9-3	13 AUG 20
2-VTUK-9-4	27 FEB 20
2-VTUK-9-5	13 AUG 20
2-VTUK-9-6	27 FEB 20
2-VTUK-9-7	13 AUG 20
2-VTUK-9-8	27 FEB 20
2-VTUK-9-9	13 AUG 20
2-VTUK-9-10	27 FEB 20
2-VTUK-9-11	13 AUG 20
2-VTUK-9-12	27 FEB 20

**KRABI / KRABI AIRPORT**

2-VTSG-1-1	7 OCT 21
2-VTSG-1-2	10 OCT 19
2-VTSG-1-3	28 DEC 23
2-VTSG-1-4	18 JUL 19
2-VTSG-1-5	2 DEC 21
2-VTSG-1-6	20 APR 23
2-VTSG-1-7	20 APR 23
2-VTSG-2-1	18 JUL 19
2-VTSG-6-1	20 MAY 21
2-VTSG-6-3	20 MAY 21

Page	Date
2-VTSG-6-5	17 JUN 21
2-VTSG-6-6	18 JUL 19
2-VTSG-6-7	17 JUN 21
2-VTSG-6-8	18 JUL 19
2-VTSG-6-9	18 JUL 19
2-VTSG-7-1	17 JUN 21
2-VTSG-7-2	18 JUL 19
2-VTSG-8-1	17 JUN 21
2-VTSG-8-2	18 JUL 19
2-VTSG-8-3	17 JUN 21
2-VTSG-8-4	18 JUL 19
2-VTSG-8-5	17 JUN 21
2-VTSG-8-6	18 JUL 19
2-VTSG-8-7	17 JUN 21
2-VTSG-8-8	17 JUN 21

**LAMPANG / LAMPANG AIRPORT**

2-VTCL-1-1	7 OCT 21
2-VTCL-1-2	7 OCT 21
2-VTCL-1-3	3 NOV 22
2-VTCL-1-4	7 OCT 21
2-VTCL-1-5	2 DEC 21
2-VTCL-1-6	7 OCT 21
2-VTCL-1-7	15 JUN 23
2-VTCL-2-1	18 JUL 19
2-VTCL-6-1	15 JUN 23
2-VTCL-6-2	15 JUN 23
2-VTCL-6-3	15 JUN 23
2-VTCL-6-4	15 JUN 23
2-VTCL-8-1	18 JUL 19
2-VTCL-8-2	18 JUL 19
2-VTCL-8-3	18 JUL 19
2-VTCL-8-4	18 JUL 19
2-VTCL-8-5	18 JUL 19
2-VTCL-8-6	18 JUL 19
2-VTCL-8-7	25 MAR 21
2-VTCL-8-8	25 MAR 21
2-VTCL-8-9	25 MAR 21
2-VTCL-8-10	25 MAR 21

**LOEI / LOEI AIRPORT**

2-VTUL-1-1	7 OCT 21
2-VTUL-1-2	2 NOV 23
2-VTUL-1-3	2 NOV 23
2-VTUL-1-4	2 NOV 23
2-VTUL-1-5	2 NOV 23
2-VTUL-1-6	2 NOV 23
2-VTUL-1-7	2 NOV 23
2-VTUL-1-8	30 NOV 23
2-VTUL-1-9	30 NOV 23
2-VTUL-1-10	2 NOV 23
2-VTUL-2-1	2 NOV 23
2-VTUL-6-1	22 APR 21
2-VTUL-6-2	22 APR 21
2-VTUL-6-3	22 APR 21
2-VTUL-6-4	22 APR 21
2-VTUL-8-1	20 MAY 21
2-VTUL-8-2	20 MAY 21
2-VTUL-8-3	20 MAY 21
2-VTUL-8-4	22 APR 21
2-VTUL-8-5	22 APR 21

**LOP BURI / KHOK KATHIAM AIRPORT**

2-VTBL-1-1	12 SEP 19
2-VTBL-1-2	12 SEP 19
2-VTBL-1-3	12 SEP 19
2-VTBL-1-4	13 JUL 23
2-VTBL-1-5	12 SEP 19
2-VTBL-1-6	12 SEP 19
2-VTBL-1-7	13 JUL 23
2-VTBL-1-8	12 SEP 19

Page	Date	Page	Date	Page	Date		
2-VTBL-1-9	12 SEP 19	2-VTUQ-1-8	30 NOV 23	2-VTSF-6-1	13 AUG 20		
2-VTBL-1-10	12 SEP 19	2-VTUQ-2-1	23 MAR 23	2-VTSF-6-2	18 JUL 19		
<b>MAE HONG SON / MAE HONG SON AIRPORT</b>							
2-VTCH-1-1	7 OCT 21	2-VTUQ-2-2	23 MAR 23	2-VTSF-6-3	13 AUG 20		
2-VTCH-1-2	7 OCT 21	2-VTUQ-6-1	21 APR 22	2-VTSF-6-4	18 JUL 19		
2-VTCH-1-3	20 APR 23	2-VTUQ-6-2	17 JUN 21	2-VTSF-8-1	13 AUG 20		
2-VTCH-1-4	20 APR 23	2-VTUQ-6-3	21 APR 22	2-VTSF-8-2	18 JUL 19		
2-VTCH-1-5	20 APR 23	2-VTUQ-6-4	17 JUN 21	2-VTSF-8-3	13 AUG 20		
2-VTCH-1-6	20 APR 23	2-VTUQ-6-5	17 JUN 21	2-VTSF-8-4	18 JUL 19		
2-VTCH-1-7	20 APR 23	2-VTUQ-8-1	21 APR 22	2-VTSF-8-5	13 AUG 20		
2-VTCH-1-8	20 APR 23	2-VTUQ-8-3	21 APR 22	2-VTSF-8-6	18 JUL 19		
2-VTCH-1-9	20 APR 23	2-VTUQ-8-5	21 APR 22	2-VTSF-8-7	13 AUG 20		
2-VTCH-2-1	18 JUL 19	2-VTUQ-8-7	21 APR 22	2-VTSF-8-8	18 JUL 19		
2-VTCH-6-1	23 APR 20	2-VTUQ-8-9	21 APR 22	2-VTSF-8-9	13 AUG 20		
2-VTCH-6-2	23 APR 20	2-VTUQ-8-10	20 MAY 21	2-VTSF-8-10	18 JUL 19		
2-VTCH-8-1	23 MAR 23	2-VTUQ-8-11	21 APR 22	2-VTSF-8-11	15 JUL 21		
2-VTCH-8-3	23 MAR 23	2-VTUQ-8-12	20 MAY 21	2-VTSF-8-12	15 JUL 21		
<b>MAE HONG SON / PAI AIRPORT</b>							
2-VTCI-1-1	12 SEP 19	2-VTUQ-9-1	17 JUN 21	2-VTSF-8-13	15 JUL 21		
2-VTCI-1-2	12 SEP 19	2-VTUQ-9-2	17 JUN 21	2-VTSF-8-14	15 JUL 21		
2-VTCI-1-3	12 SEP 19	2-VTUQ-9-3	17 JUN 21	<b>NAKHON SI THAMMARAT / CHA - IAN AIRPORT</b>			
2-VTCI-1-4	12 SEP 19	2-VTUQ-9-4	17 JUN 21	2-VTSN-1-1	18 JUL 19		
2-VTCI-1-5	12 SEP 19	<b>NAKHON RATCHASIMA / KHORAT AIRPORT</b>					
2-VTCI-1-6	12 SEP 19	2-VTUN-1-1	30 NOV 23	2-VTSN-1-2	18 JUL 19		
2-VTCI-1-6	12 SEP 19	2-VTUN-1-2	12 SEP 19	2-VTSN-1-3	18 JUL 19		
2-VTCI-2-1	18 JUL 19	2-VTUN-1-3	12 SEP 19	2-VTSN-1-4	18 JUL 19		
<b>NAKHON PATHOM/KAMPHAENG SAEN AIRPORT</b>							
2-VTBK-1-1	12 SEP 19	2-VTUN-1-4	30 NOV 23	2-VTSN-1-5	18 JUL 19		
2-VTBK-1-2	12 SEP 19	2-VTUN-1-5	30 NOV 23	<b>NAN / NAN NAKHON AIRPORT</b>			
2-VTBK-1-3	12 SEP 19	2-VTUN-1-6	30 NOV 23	2-VTCN-1-1	7 OCT 21		
2-VTBK-1-4	12 SEP 19	2-VTUN-1-7	23 APR 20	2-VTCN-1-2	7 OCT 21		
2-VTBK-1-5	12 SEP 19	2-VTUN-1-7	23 APR 20	2-VTCN-1-3	3 NOV 22		
2-VTBK-1-6	12 SEP 19	2-VTUN-2-1	18 JUL 19	2-VTCN-1-4	30 NOV 23		
<b>NAKHON PHANOM / NAKHON PHANOM AIRPORT</b>							
2-VTUW-1-1	7 OCT 21	2-VTUN-8-1	23 APR 20	2-VTCN-1-5	30 NOV 23		
2-VTUW-1-2	7 OCT 21	2-VTUN-8-2	23 APR 20	2-VTCN-1-6	30 NOV 23		
2-VTUW-1-3	3 NOV 22	<b>NAKHON SAWAN / NAKHON SAWAN AIRPORT</b>					
2-VTUW-1-4	7 OCT 21	2-VTPN-1-1	16 JUL 20	2-VTCN-1-7	30 NOV 23		
2-VTUW-1-5	2 NOV 23	2-VTPN-1-2	12 SEP 19	2-VTCN-1-8	30 NOV 23		
2-VTUW-1-6	26 JAN 23	2-VTPN-1-3	12 SEP 19	2-VTCN-2-1	15 JUL 21		
2-VTUW-1-7	12 SEP 19	2-VTPN-1-4	12 SEP 19	2-VTCN-8-1	23 MAR 23		
2-VTUW-1-8	30 NOV 23	2-VTPN-1-5	12 SEP 19	2-VTCN-8-2	23 MAR 23		
2-VTUW-1-9	30 NOV 23	<b>NAKHON SAWAN/TAKHLI AIRPORT</b>					
2-VTUW-2-1	18 JUL 19	2-VTPI-1-1	12 SEP 19	2-VTCN-8-3	23 MAR 23		
2-VTUW-8-1	2 NOV 23	2-VTPI-1-2	2 JAN 20	2-VTCN-8-4	23 MAR 23		
2-VTUW-8-2	18 JUL 19	2-VTPI-1-3	12 SEP 19	2-VTCN-8-5	23 MAR 23		
2-VTUW-8-3	21 APR 22	2-VTPI-1-4	12 SEP 19	2-VTCN-8-6	23 MAR 23		
2-VTUW-8-4	18 JUL 19	2-VTPI-1-5	12 SEP 19	2-VTCN-8-7	23 MAR 23		
2-VTUW-8-5	21 APR 22	2-VTPI-1-6	7 NOV 19	2-VTCN-8-8	23 MAR 23		
2-VTUW-8-6	18 JUL 19	2-VTPI-2-1	18 JUL 19	2-VTCN-8-9	23 MAR 23		
2-VTUW-8-7	2 NOV 23	2-VTPI-8-1	7 NOV 19	2-VTCN-8-10	23 MAR 23		
2-VTUW-8-8	8 SEP 22	2-VTPI-8-2	7 NOV 19	<b>NARATHIWAT / NARATHIWAT AIRPORT</b>			
2-VTUW-8-9	21 APR 22	2-VTPI-8-3	7 NOV 19	2-VTSC-1-1	7 OCT 21		
2-VTUW-8-10	8 SEP 22	2-VTPI-8-5	7 NOV 19	2-VTSC-1-2	18 JUL 19		
<b>NAKHON RATCHASIMA / NAKHON RATCHASIMA AIRPORT</b>							
2-VTUQ-1-1	18 MAY 23	2-VTPI-8-6	7 NOV 19	2-VTSC-1-3	3 NOV 22		
2-VTUQ-1-2	7 OCT 21	2-VTPI-8-7	5 DEC 19	2-VTSC-1-4	18 JUL 19		
2-VTUQ-1-3	3 NOV 22	2-VTPI-8-8	7 NOV 19	2-VTSC-1-5	30 DEC 21		
2-VTUQ-1-4	23 MAR 23	2-VTPI-8-9	5 DEC 19	2-VTSC-1-6	10 AUG 23		
2-VTUQ-1-5	23 MAR 23	2-VTPI-8-10	5 DEC 19	2-VTSC-1-7	29 DEC 22		
2-VTUQ-1-6	19 MAY 22	<b>NAKHON SI THAMMARAT / NAKHON SI THAMMARAT AIRPORT</b>				2-VTSC-1-8	15 JUN 23
2-VTUQ-1-7	30 NOV 23	2-VTSF-1-1	7 OCT 21	2-VTSC-2-1	18 JUL 19		
<b>NAKHON SI THAMMARAT / CHA - IAN AIRPORT</b>						2-VTSC-8-1	15 JUN 23
2-VTSF-6-1	13 AUG 20	2-VTSF-1-2	21 APR 22	2-VTSC-8-2	18 JUL 19		
2-VTSF-6-2	18 JUL 19	2-VTSF-1-3	3 NOV 22	2-VTSC-8-3	15 JUN 23		
2-VTSF-6-3	13 AUG 20	2-VTSF-1-4	21 APR 22	2-VTSC-8-4	18 JUL 19		
2-VTSF-6-4	18 JUL 19	2-VTSF-1-5	14 JUL 22	2-VTSC-8-5	15 JUN 23		
2-VTSF-8-1	13 AUG 20	2-VTSF-1-6	28 DEC 23	2-VTSC-8-6	18 JUL 19		
2-VTSF-8-2	18 JUL 19	2-VTSF-1-7	28 DEC 23	2-VTSC-8-7	15 JUN 23		
2-VTSF-8-3	13 AUG 20	2-VTSF-1-8	30 NOV 23	2-VTSC-8-8	15 JUN 23		
2-VTSF-8-4	18 JUL 19	2-VTSF-2-1	18 JUL 19	2-VTSC-8-9	15 JUN 23		
2-VTSF-8-5	13 AUG 20	<b>PATTANI / PATTANI AIRPORT</b>				2-VTSC-8-10	15 JUN 23
2-VTSF-8-6	18 JUL 19						
2-VTSF-8-7	13 AUG 20						
2-VTSF-8-8	18 JUL 19						
2-VTSF-8-9	13 AUG 20						
2-VTSF-8-10	18 JUL 19						
2-VTSF-8-11	15 JUL 21						
2-VTSF-8-12	15 JUL 21						
2-VTSF-8-13	15 JUL 21						
2-VTSF-8-14	15 JUL 21						

Page	Date
2-VTSK-1-1	12 SEP 19
2-VTSK-1-2	12 SEP 19
2-VTSK-1-3	12 SEP 19
2-VTSK-1-4	12 SEP 19
2-VTSK-1-5	23 MAR 23
2-VTSK-1-6	23 MAR 23
2-VTSK-2-1	18 JUL 19
2-VTSK-8-1	18 JUL 19
2-VTSK-8-3	23 MAR 23
2-VTSK-8-5	3 DEC 20
2-VTSK-8-6	3 DEC 20
2-VTSK-8-7	3 DEC 20
2-VTSK-8-8	3 DEC 20

**PHETCHABUN / PHETCHABUN AIRPORT**

2-VTPB-1-1	7 OCT 21
2-VTPB-1-2	7 OCT 21
2-VTPB-1-3	3 NOV 22
2-VTPB-1-4	7 OCT 21
2-VTPB-1-5	2 DEC 21
2-VTPB-1-6	30 NOV 23
2-VTPB-1-7	30 NOV 23
2-VTPB-1-8	30 NOV 23
2-VTPB-2-1	18 JUL 19
2-VTPB-8-1	2 NOV 23
2-VTPB-8-3	2 NOV 23
2-VTPB-8-4	2 NOV 23
2-VTPB-8-5	2 NOV 23
2-VTPB-8-6	2 NOV 23
2-VTPB-8-7	2 NOV 23
2-VTPB-8-8	2 NOV 23
2-VTPB-8-9	2 NOV 23

**PHITSANULOK / PHITSANULOK AIRPORT**

2-VTPP-1-1	13 JUL 23
2-VTPP-1-2	7 OCT 21
2-VTPP-1-3	23 MAR 23
2-VTPP-1-4	30 NOV 23
2-VTPP-1-5	23 MAR 23
2-VTPP-1-6	2 DEC 21
2-VTPP-1-7	19 MAY 22
2-VTPP-1-8	20 APR 23
2-VTPP-1-9	23 MAR 23
2-VTPP-2-1	23 MAR 23
2-VTPP-2-2	23 MAR 23
2-VTPP-2-3	23 MAR 23
2-VTPP-2-4	23 MAR 23
2-VTPP-6-1	18 JUL 19
2-VTPP-6-3	18 JUL 19
2-VTPP-6-5	18 JUL 19
2-VTPP-6-6	18 JUL 19
2-VTPP-6-7	18 JUL 19
2-VTPP-8-1	18 JUL 19
2-VTPP-8-3	18 JUL 19
2-VTPP-8-5	18 JUL 19
2-VTPP-8-6	18 JUL 19
2-VTPP-8-7	18 JUL 19
2-VTPP-8-8	18 JUL 19
2-VTPP-8-9	18 JUL 19
2-VTPP-8-10	18 JUL 19
2-VTPP-8-11	22 APR 21
2-VTPP-8-12	22 APR 21
2-VTPP-8-13	22 APR 21
2-VTPP-8-14	22 APR 21
2-VTPP-9-1	21 APR 22
2-VTPP-9-2	21 APR 22
2-VTPP-9-3	21 APR 22
2-VTPP-9-4	21 APR 22
2-VTPP-9-5	21 APR 22

Page	Date
2-VTTP-9-6	21 APR 22

**PHRAE / PHRAE AIRPORT**

2-VTCP-1-1	7 OCT 21
2-VTCP-1-2	7 OCT 21
2-VTCP-1-3	3 NOV 22
2-VTCP-1-4	7 OCT 21
2-VTCP-1-5	2 DEC 21
2-VTCP-1-6	30 NOV 23
2-VTCP-1-7	30 NOV 23
2-VTCP-1-8	30 NOV 23
2-VTCP-2-1	26 MAR 20
2-VTCP-8-1	2 NOV 23
2-VTCP-8-3	2 NOV 23
2-VTCP-8-4	2 NOV 23

**PRACHUAP KHIRIKHAN / PRACHUAP AIRPORT**

<b>2-VTBP-1-1</b>	<b>22 FEB 24</b>
<b>2-VTBP-1-2</b>	<b>22 FEB 24</b>
2-VTBP-1-3	12 SEP 19
2-VTBP-1-4	12 SEP 19
2-VTBP-1-5	12 SEP 19
<b>2-VTBP-1-6</b>	<b>22 FEB 24</b>

**PRACHUAP KHIRI KHAN / HUA HIN AIRPORT**

2-VTPH-1-1	7 OCT 21
<b>2-VTPH-1-2</b>	<b>22 FEB 24</b>
2-VTPH-1-3	3 NOV 22
2-VTPH-1-4	12 SEP 19
2-VTPH-1-5	2 DEC 21
2-VTPH-1-6	30 NOV 23
2-VTPH-1-7	25 JAN 24
2-VTPH-2-1	18 JUL 19
2-VTPH-8-1	26 MAR 20
2-VTPH-8-3	26 MAR 20
2-VTPH-8-4	18 JUL 19
2-VTPH-8-5	12 AUG 21
2-VTPH-8-6	12 AUG 21
2-VTPH-9-1	27 FEB 20
2-VTPH-9-2	27 FEB 20
2-VTPH-9-3	27 FEB 20
2-VTPH-9-4	27 FEB 20
2-VTPH-9-5	27 FEB 20
2-VTPH-9-6	27 FEB 20
2-VTPH-9-7	27 FEB 20
2-VTPH-9-8	27 FEB 20
2-VTPH-9-9	27 FEB 20
2-VTPH-9-10	27 FEB 20
2-VTPH-9-11	27 FEB 20
2-VTPH-9-12	27 FEB 20

**RANONG / RANONG AIRPORT**

2-VTSR-1-1	7 OCT 21
2-VTSR-1-2	7 OCT 21
2-VTSR-1-3	3 NOV 22
2-VTSR-1-4	7 OCT 21
2-VTSR-1-5	2 DEC 21
2-VTSR-1-6	7 OCT 21
2-VTSR-1-7	2 NOV 23
2-VTSR-2-1	18 JUL 19
2-VTSR-6-1	20 MAY 21
2-VTSR-6-2	20 MAY 21
2-VTSR-6-3	20 MAY 21
2-VTSR-6-4	20 MAY 21
2-VTSR-6-5	20 MAY 21
2-VTSR-6-6	20 MAY 21
2-VTSR-6-7	20 MAY 21
2-VTSR-6-8	20 MAY 21
2-VTSR-8-1	2 NOV 23

Page	Date
2-VTSR-8-2	2 NOV 23
2-VTSR-8-3	2 NOV 23
2-VTSR-8-4	20 MAY 21
2-VTSR-8-5	2 NOV 23
2-VTSR-8-6	2 NOV 23
2-VTSR-8-7	2 NOV 23
2-VTSR-8-8	2 NOV 23

**ROI ET / ROI ET AIRPORT**

2-VTUV-1-1	11 AUG 22
2-VTUV-1-2	7 OCT 21
2-VTUV-1-3	26 MAR 20
2-VTUV-1-4	26 MAR 20
2-VTUV-1-5	2 DEC 21
2-VTUV-1-6	30 NOV 23
2-VTUV-1-7	30 NOV 23
2-VTUV-2-1	7 OCT 21
2-VTUV-6-1	21 APR 22
2-VTUV-6-2	16 JUL 20
2-VTUV-6-3	16 JUL 20
2-VTUV-6-5	21 APR 22
2-VTUV-6-6	16 JUL 20
2-VTUV-6-7	16 JUL 20
2-VTUV-8-1	21 APR 22
2-VTUV-8-2	16 JUL 20
2-VTUV-8-3	21 APR 22
2-VTUV-8-4	16 JUL 20
2-VTUV-8-5	21 APR 22
2-VTUV-8-6	16 JUL 20
2-VTUV-8-7	21 APR 22
2-VTUV-8-8	16 JUL 20
2-VTUV-8-9	16 JUL 20
2-VTUV-8-10	16 JUL 20
2-VTUV-8-11	21 APR 22
2-VTUV-8-12	20 MAY 21
2-VTUV-8-13	20 MAY 21
2-VTUV-8-15	21 APR 22
2-VTUV-8-16	20 MAY 21
2-VTUV-8-17	20 MAY 21
2-VTUV-9-1	21 APR 22
2-VTUV-9-2	21 APR 22
2-VTUV-9-3	21 APR 22
2-VTUV-9-4	21 APR 22

**SA KAEO / WATTHANA NAKHON AIRPORT**

2-VTBW-1-1	11 AUG 22
2-VTBW-1-2	28 DEC 23
2-VTBW-1-3	11 AUG 22
2-VTBW-1-4	28 DEC 23
2-VTBW-1-5	28 DEC 23
2-VTBW-1-6	28 DEC 23

**SAKON NAKHON / SAKON NAKHON AIRPORT**

2-VTUI-1-1	8 SEP 22
2-VTUI-1-2	7 OCT 21
2-VTUI-1-3	2 NOV 23
2-VTUI-1-4	15 JUN 23
2-VTUI-1-5	15 JUN 23
2-VTUI-1-6	15 JUN 23
2-VTUI-1-7	15 JUN 23
2-VTUI-1-8	2 NOV 23
2-VTUI-1-9	2 NOV 23
2-VTUI-1-10	30 NOV 23
2-VTUI-1-11	30 NOV 23
2-VTUI-2-1	30 DEC 21
2-VTUI-8-1	2 NOV 23
2-VTUI-8-2	18 JUL 19
2-VTUI-8-3	2 NOV 23
2-VTUI-8-4	18 JUL 19

Page	Date	Page	Date	Page	Date
2-VTUI-8-5	2 NOV 23	2-VTSB-8-4	23 MAR 23	2-VTPM-2-5	1 DEC 22
2-VTUI-8-6	18 JUL 19	2-VTSB-8-5	23 MAR 23	2-VTPM-2-6	1 DEC 22
2-VTUI-8-7	2 NOV 23	2-VTSB-8-6	23 MAR 23	2-VTPM-3-1	1 DEC 22
2-VTUI-8-8	18 JUL 19	2-VTSB-8-7	23 MAR 23	2-VTPM-6-1	1 DEC 22
2-VTUI-8-9	2 NOV 23	2-VTSB-8-8	23 MAR 23	2-VTPM-6-2	1 DEC 22
2-VTUI-8-10	28 JAN 21			2-VTPM-7-1	1 DEC 22
2-VTUI-8-11	2 NOV 23			2-VTPM-7-2	1 DEC 22
2-VTUI-8-12	28 JAN 21			2-VTPM-8-1	15 JUN 23
		<b>SURAT THANI / SAMUI AIRPORT</b>		2-VTPM-8-2	1 DEC 22
<b>SONGKHLA / SONGKHLA AIRPORT</b>		2-VTSM-1-1	10 AUG 23	2-VTPM-8-3	15 JUN 23
2-VTSH-1-1	12 SEP 19	2-VTSM-1-2	2 NOV 23	2-VTPM-8-4	15 JUN 23
2-VTSH-1-2	12 SEP 19	2-VTSM-1-3	2 NOV 23		
2-VTSH-1-3	12 SEP 19	2-VTSM-1-4	26 MAR 20	<b>TRANG / TRANG AIRPORT</b>	
2-VTSH-1-4	12 SEP 19	2-VTSM-1-5	25 JAN 24	2-VTST-1-1	7 OCT 21
2-VTSH-1-5	12 SEP 19	2-VTSM-1-6	2 NOV 23	2-VTST-1-2	7 OCT 21
2-VTSH-2-1	18 JUL 19	2-VTSM-1-7	10 SEP 20	2-VTST-1-3	3 NOV 22
		2-VTSM-1-8	30 NOV 23	2-VTST-1-4	7 OCT 21
<b>SUKHOTHAI / SUKHOTHAI AIRPORT</b>		2-VTSM-1-9	30 NOV 23	2-VTST-1-5	2 DEC 21
2-VTPO-1-1	2 NOV 23	2-VTSM-1-10	30 NOV 23	2-VTST-1-6	15 JUN 23
2-VTPO-1-2	2 NOV 23	2-VTSM-2-1	18 JUL 19	2-VTST-2-1	17 JUN 21
2-VTPO-1-3	2 NOV 23	2-VTSM-2-3	18 JUL 19	2-VTST-8-1	15 JUN 23
2-VTPO-1-4	2 NOV 23	2-VTSM-2-5	18 JUL 19	2-VTST-8-2	18 JUL 19
2-VTPO-1-5	2 NOV 23	2-VTSM-3-1	18 JUL 19	2-VTST-8-3	15 JUN 23
2-VTPO-1-6	2 NOV 23	2-VTSM-6-1	18 JUN 20	2-VTST-8-4	18 JUL 19
2-VTPO-1-7	2 NOV 23	2-VTSM-6-2	18 JUN 20	2-VTST-8-5	15 JUN 23
2-VTPO-1-8	2 NOV 23	2-VTSM-6-3	18 JUN 20	2-VTST-8-6	3 DEC 20
2-VTPO-2-1	18 JUL 19	2-VTSM-6-5	18 JUN 20		
2-VTPO-2-3	18 JUL 19	2-VTSM-6-6	18 JUN 20	<b>TRAT (KHAO SMING) / TRAT AIRPORT</b>	
2-VTPO-3-1	18 JUL 19	2-VTSM-6-7	18 JUN 20	2-VTBO-1-1	19 MAY 22
2-VTPO-6-1	23 MAR 23	2-VTSM-8-1	18 JUN 20	2-VTBO-1-2	21 APR 22
2-VTPO-6-2	18 JUL 19	2-VTSM-8-2	18 JUN 20	2-VTBO-1-3	21 APR 22
2-VTPO-6-3	23 MAR 23	2-VTSM-8-3	18 JUN 20	2-VTBO-1-4	3 NOV 22
2-VTPO-6-4	18 JUL 19	2-VTSM-8-4	18 JUN 20	2-VTBO-1-5	21 APR 22
2-VTPO-8-1	23 MAR 23	2-VTSM-8-5	18 JUN 20	2-VTBO-1-6	30 NOV 23
2-VTPO-8-3	23 MAR 23	2-VTSM-8-6	18 JUN 20	2-VTBO-1-7	30 NOV 23
2-VTPO-8-4	18 JUL 19	2-VTSM-8-7	18 JUN 20	2-VTBO-8-1	23 MAR 23
2-VTPO-8-5	18 JUL 19	2-VTSM-8-8	18 JUN 20	2-VTBO-8-2	15 JUL 21
2-VTPO-8-7	23 MAR 23	2-VTSM-8-9	15 JUL 21		
2-VTPO-8-8	22 APR 21	2-VTSM-8-10	15 JUL 21	<b>UBON RATCHATHANI / UBON RATCHATHANI AIRPORT</b>	
2-VTPO-8-9	23 MAR 23	2-VTSM-8-11	15 JUL 21	2-VTUU-1-1	23 FEB 23
2-VTPO-8-10	22 APR 21	2-VTSM-8-13	15 JUL 21	2-VTUU-1-2	7 OCT 21
		2-VTSM-8-14	15 JUL 21	2-VTUU-1-3	18 JUL 19
		2-VTSM-8-15	15 JUL 21	2-VTUU-1-4	18 JUL 19
		2-VTSM-8-17	15 JUL 21	2-VTUU-1-5	18 JUL 19
		2-VTSM-8-18	15 JUL 21	2-VTUU-1-6	26 MAR 20
		2-VTSM-8-19	15 JUL 21	2-VTUU-1-7	27 FEB 20
		2-VTSM-8-21	15 JUL 21	2-VTUU-1-8	26 JAN 23
		2-VTSM-8-22	15 JUL 21	2-VTUU-1-9	2 NOV 23
		2-VTSM-8-23	15 JUL 21	2-VTUU-1-10	30 NOV 23
				2-VTUU-1-11	30 NOV 23
		<b>TAK / TAK AIRPORT</b>		2-VTUU-1-12	30 NOV 23
		2-VTPT-1-1	7 OCT 21	2-VTUU-2-1	13 AUG 20
		2-VTPT-1-2	7 OCT 21	2-VTUU-6-1	21 APR 22
		2-VTPT-1-3	3 NOV 22	2-VTUU-6-3	21 APR 22
		2-VTPT-1-4	12 SEP 19	2-VTUU-6-5	21 APR 22
		2-VTPT-1-5	2 DEC 21	2-VTUU-6-6	18 JUL 19
		2-VTPT-1-6	11 AUG 22	2-VTUU-6-7	21 APR 22
		2-VTPT-2-1	18 JUL 19	2-VTUU-6-8	18 JUL 19
				2-VTUU-8-1	21 APR 22
		<b>TAK / MAE SOT AIRPORT</b>		2-VTUU-8-2	18 JUL 19
		2-VTPM-1-1	1 DEC 22	2-VTUU-8-3	21 APR 22
		2-VTPM-1-2	26 JAN 23	2-VTUU-8-4	18 JUL 19
		2-VTPM-1-3	26 JAN 23	2-VTUU-8-5	21 APR 22
		2-VTPM-1-4	26 JAN 23	2-VTUU-8-6	18 JUL 19
		2-VTPM-1-5	26 JAN 23	2-VTUU-8-7	21 APR 22
		2-VTPM-1-6	26 JAN 23	2-VTUU-8-8	20 MAY 21
		2-VTPM-1-7	26 JAN 23	2-VTUU-8-9	21 APR 22
		2-VTPM-1-8	2 NOV 23	2-VTUU-8-10	20 MAY 21
		2-VTPM-1-9	15 JUN 23		
		2-VTPM-2-1	1 DEC 22	<b>UDON THANI / UDON THANI AIRPORT</b>	
		2-VTPM-2-2	1 DEC 22		
		2-VTPM-2-3	26 JAN 23		
		2-VTPM-2-4	1 DEC 22		

Page	Date	Page	Date
2-VTUD-1-1	29 DEC 22	2-VTUZ-3-1	30 NOV 23
2-VTUD-1-2	25 JAN 24	2-VTUZ-4-1	30 NOV 23
2-VTUD-1-3	13 JUL 23	2-VTUZ-5-1	30 NOV 23
2-VTUD-1-4	13 JUL 23	2-VTUZ-6-1	30 NOV 23
2-VTUD-1-5	13 JUL 23	2-VTUZ-7-1	30 NOV 23
2-VTUD-1-6	13 JUL 23	2-VTUZ-8-1	30 NOV 23
2-VTUD-1-7	13 JUL 23	2-VTUZ-9-1	30 NOV 23
2-VTUD-1-8	13 JUL 23	2-VTUZ-10-1	30 NOV 23
2-VTUD-1-9	13 JUL 23	2-VTUZ-11-1	30 NOV 23
2-VTUD-1-10	13 JUL 23	2-VTUZ-12-1	30 NOV 23
2-VTUD-1-11	30 NOV 23	2-VTUZ-13-1	30 NOV 23
2-VTUD-1-12	30 NOV 23	2-VTUZ-14-1	30 NOV 23
2-VTUD-1-13	30 NOV 23	2-VTUZ-15-1	30 NOV 23
2-VTUD-2-1	21 APR 22		
2-VTUD-2-3	15 JUL 21		
2-VTUD-6-1	21 APR 22		
2-VTUD-6-2	28 JAN 21		
2-VTUD-6-3	28 JAN 21		
2-VTUD-6-5	21 APR 22		
2-VTUD-6-6	28 JAN 21		
2-VTUD-6-7	28 JAN 21		
2-VTUD-7-1	21 APR 22		
2-VTUD-7-2	28 JAN 21		
2-VTUD-7-3	28 JAN 21		
2-VTUD-7-5	21 APR 22		
2-VTUD-7-6	28 JAN 21		
2-VTUD-7-7	28 JAN 21		
2-VTUD-8-1	21 APR 22		
2-VTUD-8-2	25 MAR 21		
2-VTUD-8-3	21 APR 22		
2-VTUD-8-4	25 MAR 21		
2-VTUD-8-5	21 APR 22		
2-VTUD-8-6	25 MAR 21		
2-VTUD-8-7	25 MAR 21		
2-VTUD-8-8	25 MAR 21		
2-VTUD-8-9	25 MAR 21		
2-VTUD-8-11	25 MAR 21		
2-VTUD-8-12	25 MAR 21		
2-VTUD-8-13	25 MAR 21		
2-VTUD-8-14	25 MAR 21		

**YALA/BETONG AIRPORT**

2-VTSY-1-1	21 APR 22
2-VTSY-1-2	21 MAY 20
2-VTSY-1-3	21 APR 22
2-VTSY-1-4	21 APR 22
2-VTSY-1-5	21 APR 22
2-VTSY-1-6	21 APR 22
2-VTSY-1-7	20 APR 23
2-VTSY-1-8	20 APR 23
2-VTSY-2-1	21 APR 22
2-VTSY-3-1	21 APR 22
2-VTSY-3-3	21 APR 22
2-VTSY-6-1	29 DEC 22
2-VTSY-6-2	3 DEC 20
2-VTSY-6-3	29 DEC 22
2-VTSY-6-4	3 DEC 20
2-VTSY-8-1	29 DEC 22
2-VTSY-8-2	3 DEC 20
2-VTSY-8-3	29 DEC 22
2-VTSY-8-4	3 DEC 20

**KHON-KAEN / NAM PHONG**

2-VTUZ-1-1	30 NOV 23
2-VTUZ-1-2	30 NOV 23
2-VTUZ-1-3	30 NOV 23
2-VTUZ-1-4	30 NOV 23
2-VTUZ-1-5	30 NOV 23
2-VTUZ-1-6	30 NOV 23
2-VTUZ-1-7	30 NOV 23
2-VTUZ-2-1	30 NOV 23

## 5. List of Aeronautical Charts Available

## 5.1 Aerodrome Chart - ICAO

Title of series	Scale	Name and/or number	Reference	Price (\$US)	Date	
Aerodrome Chart - ICAO		Don Mueang Intl	AD 2-VTBD-2-1	In AIP	18 MAY 2023	
		Chiang Mai Intl	AD 2-VTCC-2-1	In AIP	28 DEC 2023	
		Mae Fah Luang-Chiang Rai Intl	AD 2-VTCT-2-1	In AIP	22 FEB 2024	
		Phuket Intl	AD 2-VTSP-2-1	In AIP	25 JAN 2024	
		Suvarnabhumi Intl	AD 2-VTBS-2-1	In AIP	30 NOV 2023	
		U-Tapao Rayong Pattaya Intl	AD 2-VTBU-2-1	In AIP	16 JUN 2022	
		Hat Yai Intl	AD 2-VTSS-2-1	In AIP	2 NOV 2023	
		Buri Ram	AD 2-VTUE-2-1	In AIP	29 DEC 2022	
		Chumphon	AD 2-VTSE-2-1	In AIP	20 APR 2023	
		Khon Kaen	AD 2-VTUK-2-1	In AIP	29 DEC 2022	
		Krabi	AD 2-VTSG-2-1	In AIP	18 JUL 2019	
		Lampang	AD 2-VTCL-2-1	In AIP	18 JUL 2019	
		Loei	AD 2-VTUL-2-1	In AIP	2 NOV 2023	
		Mae Hong Song	AD 2-VTCH-2-1	In AIP	18 JUL 2019	
		Pai	AD 2-VTCI-2-1	In AIP	18 JUL 2019	
		Nakhon Phanom	AD 2-VTUW-2-1	In AIP	18 JUL 2019	
		Nakhon Ratchasima	AD 2-VTUQ-2-1	In AIP	23 MAR 2023	
		Nakhon Si Thammarat	AD 2-VTSF-2-1	In AIP	18 JUL 2019	
		Nan Nakhon	AD 2-VTCN-2-1	In AIP	15 JUL 2021	
		Narathiwat	AD 2-VTSC-2-1	In AIP	18 JUL 2019	
		Pattani	AD 2-VTSK-2-1	In AIP	18 JUL 2019	
		Phatchabun	AD 2-VTPB-2-1	In AIP	18 JUL 2019	
		Phitsanulok	AD 2-VTPP-2-1	In AIP	23 MAR 2023	
		Phrae	AD 2-VTCP-2-1	In AIP	26 MAR 2020	
		Hua Hin	AD 2-VTPH-2-1	In AIP	18 JUL 2019	
		Ranong	AD 2-VTSR-2-1	In AIP	18 JUL 2019	
		Raoi Et	AD 2-VTUV-2-1	In AIP	7 OCT 2021	
		Sakon Nakhon	AD 2-VTUI-2-1	In AIP	30 DEC 2021	
		Songkhla	AD 2-VTSH-2-1	In AIP	18 JUL 2019	
		1 : 20,000	Sukhothai	AD 2-VTPO-2-1	In AIP	18 JUL 2019
			Surat Thani	AD 2-VTSB-2-1	In AIP	5 NOV 2020
		1 : 20,000	Samui	AD 2-VTSM-2-1	In AIP	18 JUL 2019
			Tak	AD 2-VTPT-2-1	In AIP	18 JUL 2019
		Mae Sot	AD 2-VTPM-2-1	In AIP	1 DEC 2022	
		Trang	AD 2-VTST-2-1	In AIP	17 JUN 2021	
		Ubon Ratchathani	AD 2-VTUU-2-1	In AIP	13 AUG 2020	
		Udon Thani	AD 2-VTUD-2-1	In AIP	21 APR 2022	
		Betong	AD 2-VTSY-2-1	In AIP	21 APR 2022	

5.2 Aircraft Parking/Docking Chart - ICAO

Title of series	Scale	Name and/or number	Reference	Price (\$US)	Date
Aircraft Parking/ Docking Chart - ICAO		<b>Don Mueang Intl</b>	AD 2-VTBD-2-3	In AIP	20 MAY 2021
		<b>Chiang Mai Intl</b>	AD 2-VTCC-2-3	In AIP	28 DEC 2023
		<b>Mae Fah Luang-Chiang Rai Intl</b>	AD 2-VTCT-2-3	In AIP	27 FEB 2020
		<b>Phuket Intl</b>	AD 2-VTSP-2-3	In AIP	25 JAN 2024
		<b>Suvarnabhumi Intl</b>	AD 2-VTBS-2-3	In AIP	30 NOV 2023
		<b>Hat Yai Intl</b>	AD 2-VTSS-2-3	In AIP	7 NOV 2019
		<b>Buri Ram</b>	AD 2-VTUD-2-3	In AIP	29 DEC 2022
		<b>Chumphon</b>	AD 2-VTSE-2-3	In AIP	20 APR 2023
		<b>Khon Kaen</b>	AD 2-VTUK-2-3	In AIP	29 DEC 2022
	1 : 20,000	<b>Samui</b>	AD 2-VTSM-2-3	In AIP	18 JUL 2019
		<b>Mae Sot</b>	AD 2-VTPM-2-3	In AIP	26 JAN 2023
		<b>Udon Thani</b>	AD 2-VTUD-2-3	In AIP	15 JUL 2021



5.3 Aerodrome Ground Movement Chart - ICAO

Title of series	Scale	Name and/or number	Reference	Price (\$US)	Date
Aerodrome Ground Movement Chart - ICAO		<b>Don Mueang Intl</b>	AD 2-VTBD-2-5	In AIP	3 NOV 2022
		<b>Chiang Mai Intl</b>	AD 2-VTCC-2-5	In AIP	28 DEC 2023
		<b>Mae Fah Luang-Chiang Rai Intl</b>	AD 2-VTCT-2-5	In AIP	22 FEB 2024
		<b>Phuket Intl</b>	AD 2-VTSP-2-5	In AIP	25 JAN 2024
		<b>Suvarnabhumi Intl</b>			
		STANDARD TAXI ROUTE - INBOUND - LANDING RWY 19R	AD 2-VTBS-2-7	In AIP	30 NOV 2023
		STANDARD TAXI ROUTE - INBOUND - LANDING RWY 19L	AD 2-VTBS-2-9	In AIP	30 NOV 2023
		STANDARD TAXI ROUTE - INBOUND - LANDING RWY 01R	AD 2-VTBS-2-11	In AIP	30 NOV 2023
		STANDARD TAXI ROUTE - INBOUND - LANDING RWY 01L	AD 2-VTBS-2-13	In AIP	30 NOV 2023
		STANDARD TAXI ROUTE - OUTBOUND - TAKE-OFF 19R	AD 2-VTBS-2-15	In AIP	30 NOV 2023
		STANDARD TAXI ROUTE - OUTBOUND - TAKE-OFF 19L	AD 2-VTBS-2-17	In AIP	30 NOV 2023
		STANDARD TAXI ROUTE - OUTBOUND - TAKE-OFF 01R	AD 2-VTBS-2-19	In AIP	30 NOV 2023
		STANDARD TAXI ROUTE - OUTBOUND - TAKE-OFF 01L	AD 2-VTBS-2-21	In AIP	30 NOV 2023
	1 : 15,000	<b>U-Tapao Rayong Pattaya Intl</b>	AD 2-VTBU-2-3	In AIP	16 JUN 2022
	1 : 10,000	<b>Hat Yai Intl</b>	AD 2-VTSS-2-5	In AIP	30 DEC 2021
		<b>Buri Ram</b>	AD 2-VTUU-2-5	In AIP	29 DEC 2022
		<b>Chumphon</b>	AD 2-VTSE-2-5	In AIP	20 APR 2023
	1 : 10,000	<b>Sukhothai</b>	AD 2-VTPO-2-3	In AIP	18 JUL 2019
	1 : 10,000	<b>Samui</b>	AD 2-VTSM-2-5	In AIP	18 JUL 2019
	1 : 10,000	<b>Mae Sot</b>	AD 2-VTPM-2-5	In AIP	1 DEC 2022
	<b>Phitsanulok</b>	AD 2-VTPP-2-3	In AIP	23 MAR 2023	

5.4 Aerodrome Obstacle Chart - ICAO Type A

Title of series	Scale	Name and/or number	Reference	Price (\$US)	Date
Aerodrome Obstacle Chart - ICAO Type A		<b>Don Mueang Intl</b>			
	1 : 15,000	RWY 21R/03L	AD 2-VTBD-3-3	In AIP	18 JUL 2019
	1 : 20,000	RWY 21L/03R	AD 2-VTBD-3-5	In AIP	18 JUL 2019
		<b>Chiang Mai Intl</b>			
	1 : 20,000	RWY 18/36	AD 2-VTCC-3-1	In AIP	7 OCT 2021
		<b>Mae Fah Luang-Chiang Rai Intl</b>			
	1 : 12,500	RWY 03/21	AD 2-VTCT-3-1	In AIP	18 JUL 2019
		<b>Phuket Intl</b>			
	1 : 20,000	RWY 09/27	AD 2-VTSP-3-1	In AIP	18 JUL 2019
		<b>Suvarnabhumi Intl</b>			
	1 : 20,000	RWY 01L/19R	AD 2-VTBS-3-1	In AIP	18 JUL 2019
	1 : 20,000	RWY 01R/19L	AD 2-VTBS-3-3	In AIP	18 JUL 2019
		<b>U-Tapao Rayong Pattaya Intl</b>			
		RWY 18/36	AD 2-VTBU-3-1	In AIP	18 JUL 2019
		<b>Hat Yai Intl</b>			
	1 : 20,000	RWY 08/26	AD 2-VTSS-3-1	In AIP	7 NOV 2019
		<b>Buri Ram</b>			
	1 : 20,000	RWY 04/22	AD 2-VTUU-3-1	in AIP	29 DEC 2022
		<b>Chumphon</b>			
	1 : 20,000	RWY 06/24	AD 2-VTSE-3-1	In AIP	20 APR 2023
		<b>Sukhothai</b>			
	1 : 15,000	RWY 18/36	AD 2-VTPO-3-1	In AIP	18 JUL 2019
		<b>Samui</b>			
1 : 15,000	RWY 17/35	AD 2-VTSM-3-1	In AIP	18 JUL 2019	
	<b>Betong</b>				
1 : 20,000	RWY 07/25	AD 2-VTSY-3-1	In AIP	21 APR 2022	
	<b>Mae Sot</b>				
1 : 20,000	RWY 09/27	AD 2-VTPM-3-1	In AIP	1 DEC 2022	

## GEN 3.4 COMMUNICATION AND NAVIGATION SERVICES

## 1. Responsible services

The responsible service for the provision of telecommunication and navigation facility services in Thailand is Aeronautical Radio of Thailand Ltd.

Aeronautical Radio of Thailand Ltd.

102 Ngamduplee, Rama IV,

Tungmahamek, Sathon,

Bangkok 10120

Thailand

Tel: +662 287 3531-41

Fax: +662 287 3131

AFS: VTBBYTYX

The service is provided in accordance with the provisions contained in the following ICAO documents:

Annex 10	- Aeronautical Telecommunications
Doc 8400	- ICAO Abbreviations and Codes (PANS-ABC)
Doc 8585	- Designators for Aircraft Operating Agencies, Aeronautical Authorities and Services
Doc 7030	- Regional Supplementary Procedures
Doc 7910	- Location Indicators
Doc 9880	- Technical Specifications for ATN using ISO/OSI Standards and Protocols

## 2. Area of responsibility

Aeronautical Radio of Thailand Ltd. is responsible for the aeronautical telecommunication services and navigation services operated within Bangkok FIR.

## 3. Types of services

## 3.1 Radio Navigation Service

The following types of radio navigation aids for air navigation are available;

- Non-directional Beacon (NDB);
- VHF Omni-directional Radio Range (VOR);
- Distance Measuring Equipment (DME); and
- Instrument Landing System (ILS)

## 3.2 Aeronautical Mobile/Fixed Service

## – Aeronautical Mobile Service (Voice Communications)

The aeronautical stations maintain a continuous watch on their stated frequencies during the published hours of service unless otherwise notified. An aircraft should normally communicate with the air-ground control station which exercises control in the area in which it is flying. Aircraft should maintain continuous watch on the appropriate frequency of the control station and should not abandon watch, except in an emergency, without informing the control radio station.

## – Aeronautical Fixed Service (Voice Communications)

ATS direct speech circuit (telephone circuit) is provided for direct exchange of information between air traffic services (ATS) units. The detail of information on Aeronautical Fixed Services (Voice Communications) are given in GEN 3.4, TABLE COM-1

## – Aeronautical Fixed Service (Data Communications)

Messages to be transmitted over the Aeronautical Fixed Service are accepted only if:

- a) they satisfy the requirements of Annex 10 Volume II Chapter 3 paragraph 3.3;
- b) they are prepared in the form specified in Annex 10 Volume II; and
- c) the text of an individual message does not exceed 1800 characters in length and AFTN message entered by the AFTN origin station shall not exceed 2100 characters in length.

General Aircraft Operating Agency messages are only accepted for transmission to countries which have agreed to accept Class "B" traffic. Charges for Class "B" traffic are published in GEN 4.2.

The detail of information on Aeronautical Fixed Services (Data Communications) are given in GEN 3.4, TABLE COM-2

**3.3 Broadcasting Service**

- Automatic terminal information service (ATIS), the automatic provision of current and routine information to arriving and departing aircraft is provided.
- Sub-area Meteorological Broadcasts (VOLMET Radiotelephony Broadcasts) are available for the use of aircraft in flight. Full details are given in GEN 3.5, Table GEN 3.5.7.

**3.4 Language Used**

English

**3.5 Miscellaneous**

TABLE COM - 1  
AERONAUTICAL FIXED SERVICES (VOICE COMMUNICATIONS) - INTERNATIONAL AND DOMESTIC CIRCUIT

STATION		CORRESPONDENT		TYPE OF CHANNELS	TYPE OF SERVICE	HOURS (UTC)	REMARKS		
1	2	3	4	5	6	7	8		
Bangkok ACC	Bangkok Control	Ho Chi Minh ACC	Ho Chi Minh Control	LTF	ATS	H24			
		Kuala Lumpur ACC	Lumpur Control	LTF	ATS	H24			
		Phnom Penh ACC	Phnom Penh Control	LTF	ATS	H24			
		Vientiane FIC	Vientiane Control	LTF	ATS	H24			
		Yangon ACC	Yangon Control	LTF	ATS	H24			
		Bangkok APP	Bangkok APP	LTF	ATS	H24			
		Bangkok/Suvarnabhumi TWR	Suvarnabhumi TWR	LTF	ATS	H24			
		Bangkok/Don Mueang TWR	Don Mueang TWR	LTF	ATS	H24			
		Chiang Mai APP	Chiang Mai APP	LTF	ATS	H24			
		Chiang Mai Sector	Mae Hong Son/Mae Sot APP	Lampang APP	LTF	ATS	H24		
				LTF	ATS	H24			
		Chiang Rai Sector	Chiang Rai APP	LTF	ATS	As AD OPR HR			
				Phetchabun APP	LTF	ATS	As AD OPR HR		
				Phrae APP	LTF	ATS	As AD OPR HR		
		Pitsanulok APP	Pitsanulok APP	Nan APP	LTF	ATS	As AD OPR HR		
				LTF	ATS	As AD OPR HR			
		Pitsanulok Sector	Sukothai APP	LTF	ATS	As AD OPR HR			
				Tak APP	LTF	ATS	As AD OPR HR		
		Khon Kaen Sector	Khon Kaen APP	LTF	ATS	As AD OPR HR			
				Loei APP	LTF	ATS	As AD OPR HR		
				Nakhon Phanom APP	LTF	ATS	As AD OPR HR		
				Udon APP	LTF	ATS	As AD OPR HR		
		Ubon Sector	Sakon Nakhon APP	LTF	ATS	As AD OPR HR			
				Buri Ram APP	LTF	ATS	As AD OPR HR		
				Roi Et APP	LTF	ATS	As AD OPR HR		
				Nakhon Ratchasima APP	LTF	ATS	As AD OPR HR		
				Ubon APP	LTF	ATS	As AD OPR HR		
		Hua Hin APP	Hua Hin APP	LTF	ATS	2300-1100			
		Samui Sector	Samui APP	LTF	ATS	As AD OPR HR			
				Nakhon Si Thammarat APP	LTF	ATS	As AD OPR HR		
				Chumphon APP	LTF	ATS	As AD OPR HR		
				Surat Thani APP	LTF	ATS	As AD OPR HR		
		Phuket App	Phuket APP	Trat APP	LTF	ATS	As AD OPR HR		
				LTF	ATS	H24			
		Phuket Sector	Ranong APP	LTF	ATS	As AD OPR HR			
				Krabi APP	LTF	ATS	H-24		
		Hat Yai APP	Hat Yai APP	LTF	ATS	H24			
				LTF	ATS	H24			
		Hat Yai Sector	Pattani APP	LTF	ATS	2300-1130			
				Narathiwat APP	LTF	ATS	2300-1130		
				Trang APP	LTF	ATS	2300-1130		
				LTF	ATS	H24			
		U-Tapao APP	U-Tapao APP	LTF	ATS	H24			
Chiang Rai Sector	Chiang Rai APP	Bangkok ACC	Bangkok Control	LTF	ATS	H24			
		Chiang Rai TWR	Chiang Rai TWR	LTF	ATS	As AD OPR HR			
		Pitsanulok APP	Pitsanulok APP	LTF	ATS	As AD OPR HR			
		Chiang Mai APP	Chiang Mai APP	LTF	ATS	H24			
		Chiang Mai Sector	Lampang APP	LTF	ATS	As AD OPR HR			
		Pitsanulok TWR	Pitsanulok TWR	LTF	ATS	0000-1200			
		Khon Kaen Sector	Khon Kaen APP	LTF	ATS	As AD OPR HR			
		Khon Kaen Sector	Udon APP	LTF	ATS	As AD OPR HR			
		Khon Kaen Sector	Loei APP	LTF	ATS	As AD OPR HR			
		Phetchabun APP	Bangkok ACC	Bangkok Control	LTF	ATS	H24		
				Phetchabun TWR	LTF	ATS	As AD OPR HR		
				Pitsanulok APP	Pitsanulok APP	LTF	ATS	H24	
				Chiang Mai APP	Chiang Mai APP	LTF	ATS	H24	
	Chiang Mai Sector			Lampang APP	LTF	ATS	As AD OPR HR		
	Pitsanulok TWR			Pitsanulok TWR	LTF	ATS	As AD OPR HR		
	Khon Kaen Sector			Khon Kaen APP	LTF	ATS	As AD OPR HR		
	Khon Kaen Sector			Udon APP	LTF	ATS	As AD OPR HR		
	Khon Kaen Sector			Loei APP	LTF	ATS	As AD OPR HR		
	Phrae APP			Bangkok ACC	Bangkok Control	LTF	ATS	H24	
		Phrae TWR	LTF		ATS	As AD OPR HR			
		Pitsanulok APP	Pitsanulok APP		LTF	ATS	H24		
		Chiang Mai APP	Chiang Mai APP		LTF	ATS	H24		
		Chiang Mai Sector	Lampang APP		LTF	ATS	As AD OPR HR		
		Pitsanulok TWR	Pitsanulok TWR		LTF	ATS	As AD OPR HR		
		Khon Kaen Sector	Khon Kaen APP		LTF	ATS	As AD OPR HR		
		Khon Kaen Sector	Udon APP		LTF	ATS	As AD OPR HR		
		Khon Kaen Sector	Loei APP		LTF	ATS	As AD OPR HR		
		Nan APP	Bangkok ACC		Bangkok Control	LTF	ATS	H24	
	Nan TWR			LTF	ATS	As AD OPR HR			
	Pitsanulok APP			Pitsanulok APP	LTF	ATS	H24		
	Chiang Mai APP			Chiang Mai APP	LTF	ATS	H24		
	Chiang Mai Sector			Lampang APP	LTF	ATS	As AD OPR HR		
	Pitsanulok TWR			Pitsanulok TWR	LTF	ATS	As AD OPR HR		
	Khon Kaen Sector			Khon Kaen APP	LTF	ATS	As AD OPR HR		
	Khon Kaen Sector			Udon APP	LTF	ATS	As AD OPR HR		
	Khon Kaen Sector			Loei APP	LTF	ATS	As AD OPR HR		
	Khon Kaen Sector			Khon Kaen APP	Bangkok ACC	Bangkok Control	LTF	ATS	H24
		Vientiane FIC	Vientiane Control		LTF	ATS	H24		
		Vientiane TWR	Vientiane TWR		LTF	ATS	H24		
		Vientiane APP	Vientiane APP		LTF	ATS	H24		
		Khon Kaen TWR	Khon Kaen TWR		LTF	ATS	As AD OPR HR		
		Pitsanulok APP	Pitsanulok APP		LTF	ATS	H24		
		Ubon Sector	Buri Ram APP		LTF	ATS	As AD OPR HR		
Ubon Sector		Roi Et APP	LTF		ATS	As AD OPR HR			
Ubon Sector		Nakhon Ratchasima APP	LTF		ATS	As AD OPR HR			
Ubon Sector		Ubon APP	LTF		ATS	As AD OPR HR			
Chiang Rai Sector		Phetchabun APP	LTF		ATS	As AD OPR HR			
Loei APP		Bangkok ACC	Bangkok Control		LTF	ATS	H24		
			Vientiane FIC		Vientiane Control	LTF	ATS	H24	
			Vientiane TWR	Vientiane TWR	LTF	ATS	H24		
			Vientiane APP	Vientiane APP	LTF	ATS	H24		
			Loei TWR	Loei TWR	LTF	ATS	As AD OPR HR		
			Pitsanulok APP	Pitsanulok APP	LTF	ATS	H24		
			Ubon Sector	Buri Ram APP	LTF	ATS	As AD OPR HR		
			Ubon Sector	Roi Et APP	LTF	ATS	As AD OPR HR		
			Ubon Sector	Nakhon Ratchasima APP	LTF	ATS	As AD OPR HR		
			Ubon Sector	Ubon APP	LTF	ATS	As AD OPR HR		
Udon APP		Chiang Rai Sector	Phetchabun APP	LTF	ATS	As AD OPR HR			
			Udon TWR	LTF	ATS	As AD OPR HR			
			Vientiane FIC	Vientiane Control	LTF	ATS	H24		
			Vientiane TWR	Vientiane TWR	LTF	ATS	H24		
			Vientiane APP	Vientiane APP	LTF	ATS	H24		
			Pitsanulok APP	Pitsanulok APP	LTF	ATS	H24		
Udon APP	Bangkok ACC	Bangkok Control	LTF	ATS	H24				
		Ubon Sector	Buri Ram APP	LTF	ATS	As AD OPR HR			
		Ubon Sector	Roi Et APP	LTF	ATS	As AD OPR HR			
		Ubon Sector	LTF	ATS	As AD OPR HR				

AERONAUTICAL FIXED SERVICES (VOICE COMMUNICATIONS) - INTERNATIONAL AND DOMESTIC CIRCUIT

STATION		CORRESPONDENT		TYPE OF CHANNELS	TYPE OF SERVICE	HOURS (UTC)	REMARKS	
NAME	CALL SIGN	NAME	CALL SIGN					
1	2	3	4	5	6	7	8	
Khon Kaen Sector	Udon APP	Ubon Sector	Nakhon Ratchasima APP	LTF	ATS	As AD OPR HR		
		Ubon Sector	Ubon APP	LTF	ATS	As AD OPR HR		
	Sakon Nakhon APP	Chiang Rai Sector	Phetchabun APP	Phetchabun APP	LTF	ATS	As AD OPR HR	
			Bangkok ACC	Bangkok Control	LTF	ATS	H24	
		Nakhon Phanom TWR	Nakhon Phanom TWR	LTF	ATS	As AD OPR HR		
		Sakon Nakhon TWR	Sakon Nakhon TWR	LTF	ATS	As AD OPR HR		
		Vientiane FIC	Vientiane Control	LTF	ATS	H24		
		Vientiane TWR	Vientiane TWR	LTF	ATS	H24		
		Vientiane APP	Vientiane APP	LTF	ATS	H24		
		Pitsanulok APP	Pitsanulok APP	LTF	ATS	H24		
		Ubon Sector	Buri Ram APP	LTF	ATS	As AD OPR HR		
		Ubon Sector	Roi Et APP	LTF	ATS	As AD OPR HR		
	Ubon Sector	Nakhon Ratchasima APP	LTF	ATS	As AD OPR HR			
	Ubon Sector	Ubon APP	LTF	ATS	As AD OPR HR			
	Samui Sector	Chumphon APP	Chiang Rai Sector	Phetchabun APP	LTF	ATS	As AD OPR HR	
			Bangkok ACC	Bangkok Control	LTF	ATS	H24	
			Chumphon TWR	Chumphon TWR	LTF	ATS	As AD OPR HR	
			Hua Hin TWR	Hua Hin TWR	LTF	ATS	2300-1100	
			Hat Yai App	Hat Yai App	LTF	ATS	H24	
			Phuket App	Phuket App	LTF	ATS	H24	
Phuket Sector			Krabi APP	LTF	ATS	H24		
Phuket Sector			Ranong APP	LTF	ATS	As AD OPR HR		
U-Tapao TWR			U-Tapao TWR	LTF	ATS	H24		
Bangkok ACC			Bangkok Control	LTF	ATS	H24		
Nakhon Si Thammarat APP		Nakhon Si Thammarat TWR	Nakhon Si Thammarat TWR	LTF	ATS	As AD OPR HR		
		Hua Hin TWR	Hua Hin TWR	LTF	ATS	2300-1100		
		Hat Yai App	Hat Yai App	LTF	ATS	H24		
		Phuket App	Phuket App	LTF	ATS	H24		
		Phuket Sector	Krabi APP	LTF	ATS	H24		
		Phuket Sector	Ranong APP	LTF	ATS	As AD OPR HR		
		U-Tapao TWR	U-Tapao TWR	LTF	ATS	H24		
		Bangkok ACC	Bangkok Control	LTF	ATS	H24		
		Samui TWR	Samui TWR	LTF	ATS	As AD OPR HR		
		Hua Hin TWR	Hua Hin TWR	LTF	ATS	2300-1100		
Samui APP	Hat Yai App	Hat Yai App	LTF	ATS	H24			
	Phuket App	Phuket App	LTF	ATS	H24			
	Phuket Sector	Krabi APP	LTF	ATS	H24			
	Phuket Sector	Ranong APP	LTF	ATS	As AD OPR HR			
	U-Tapao TWR	U-Tapao TWR	LTF	ATS	H24			
	Bangkok ACC	Bangkok Control	LTF	ATS	H24			
	Surat Thani APP	Surat Thani TWR	LTF	ATS	As AD OPR HR			
	Hua Hin TWR	Hua Hin TWR	LTF	ATS	2300-1100			
	Hat Yai App	Hat Yai App	LTF	ATS	H24			
	Phuket App	Phuket App	LTF	ATS	H24			
Surat Thani APP	Phuket Sector	Krabi APP	LTF	ATS	H24			
	Phuket Sector	Ranong APP	LTF	ATS	As AD OPR HR			
	U-Tapao TWR	U-Tapao TWR	LTF	ATS	H24			
	Bangkok ACC	Bangkok Control	LTF	ATS	H24			
	Trat APP	Trat TWR	LTF	ATS	As AD OPR HR			
	Hua Hin TWR	Hua Hin TWR	LTF	ATS	2300-1100			
	Phuket App	Phuket App	LTF	ATS	H24			
	Phuket Sector	Krabi APP	LTF	ATS	H24			
	Phuket Sector	Ranong APP	LTF	ATS	As AD OPR HR			
	U-Tapao TWR	U-Tapao TWR	LTF	ATS	H24			
Ubon Sector	Buri Ram APP	Bangkok ACC	Bangkok Control	LTF	ATS	H24		
		Vientiane FIC	Vientiane Control	LTF	ATS	H24		
		Buri Ram TWR	Buri Ram TWR	LTF	ATS	As AD OPR HR		
		Bangkok ACC	Bangkok Control	LTF	ATS	H24		
		Khon Kaen Sector	Khon Kaen APP	LTF	ATS	As AD OPR HR		
		Khon Kaen Sector	Udon APP	LTF	ATS	As AD OPR HR		
		Khon Kaen Sector	Sakon Nakhon APP	LTF	ATS	As AD OPR HR		
		Pakse TWR	Pakse TWR	LTF	ATS	H24		
		Vientiane FIC	Vientiane Control	LTF	ATS	H24		
		Roi Et TWR	Roi Et TWR	LTF	ATS	As AD OPR HR		
	Roi Et APP	Bangkok ACC	Bangkok Control	LTF	ATS	H24		
		Khon Kaen Sector	Khon Kaen APP	LTF	ATS	As AD OPR HR		
		Khon Kaen Sector	Udon APP	LTF	ATS	As AD OPR HR		
		Khon Kaen Sector	Sakon Nakhon APP	LTF	ATS	As AD OPR HR		
		Pakse TWR	Pakse TWR	LTF	ATS	H24		
		Vientiane FIC	Vientiane Control	LTF	ATS	H24		
		Nakhon Ratchasima TWR	Nakhon Ratchasima TWR	LTF	ATS	As AD OPR HR		
		Bangkok ACC	Bangkok Control	LTF	ATS	H24		
		Khon Kaen Sector	Khon Kaen APP	LTF	ATS	As AD OPR HR		
		Khon Kaen Sector	Udon APP	LTF	ATS	As AD OPR HR		
Nakhon Ratchasima APP	Khon Kaen Sector	Sakon Nakhon APP	LTF	ATS	As AD OPR HR			
	Pakse TWR	Pakse TWR	LTF	ATS	H24			
	Vientiane FIC	Vientiane Control	LTF	ATS	H24			
	Ubon TWR	Ubon TWR	LTF	ATS	As AD OPR HR			
	Bangkok ACC	Bangkok Control	LTF	ATS	H24			
	Khon Kaen Sector	Khon Kaen APP	LTF	ATS	As AD OPR HR			
	Khon Kaen Sector	Udon APP	LTF	ATS	As AD OPR HR			
	Khon Kaen Sector	Sakon Nakhon APP	LTF	ATS	As AD OPR HR			
	Pakse TWR	Pakse TWR	LTF	ATS	H24			
	Vientiane FIC	Vientiane Control	LTF	ATS	H24			
Ubon APP	Ubon TWR	Ubon TWR	LTF	ATS	As AD OPR HR			
	Bangkok ACC	Bangkok Control	LTF	ATS	H24			
	Khon Kaen Sector	Khon Kaen APP	LTF	ATS	As AD OPR HR			
	Khon Kaen Sector	Udon APP	LTF	ATS	As AD OPR HR			
	Khon Kaen Sector	Sakon Nakhon APP	LTF	ATS	As AD OPR HR			
	Pakse TWR	Pakse TWR	LTF	ATS	H24			
	Vientiane FIC	Vientiane Control	LTF	ATS	H24			
	Ubon TWR	Ubon TWR	LTF	ATS	As AD OPR HR			
	Bangkok ACC	Bangkok Control	LTF	ATS	H24			
	Khon Kaen Sector	Khon Kaen APP	LTF	ATS	As AD OPR HR			
Chiang Mai Approach Control Centre	Lampang APP	Lampang TWR	Lampang TWR	LTF	ATS	0030-1100		
	Mae Hong Son APP	Mae Hong Son TWR	Mae Hong Son TWR	LTF	ATS	2300-1100		
	Mae Sot APP	Mae Sot TWR	Mae Sot TWR	LTF	ATS	2300-1100		
	Pattani APP	Pattani TWR	Pattani TWR	LTF	ATS	2300-1130*	*Outside this period 1 HR PN to Hat Yai APP	
Hat Yai Approach Control Centre	Narathiwat APP	Narathiwat TWR	Narathiwat TWR	LTF	ATS	2300-1100		
	Trang APP	Trang TWR	Trang TWR	LTF	ATS	2300-1100		
	Narathiwat APP	Betong TWR	Betong TWR	LTF	ATS	0130-0930		
Phisanulok Approach Control Centre	Sukhothai APP	Sukhothai TWR	Sukhothai TWR	LTF	ATS	2300-1100		
	Tak APP	Tak TWR	Tak TWR	LTF	ATS	As AD OPR HR*	*Available on request 3 hours notice required in - advance to Phisanulok Approach Control centre	
Phuket Approach Control Centre	Krabi APP	Krabi TWR	Krabi TWR	LTF	ATS	H24		
	Ranong APP	Ranong TWR	Ranong TWR	LTF	ATS	2300-1100		

TABLE COM - 2  
AERONAUTICAL FIXED SERVICES (DATA COMMUNICATIONS) - INTERNATIONAL AND DOMESTIC CIRCUIT

STATION		CORRESPONDENT		TYPE OF CHANNELS	TYPE OF SERVICE	HOURS (UTC)	REMARKS
NAME	CALL SIGN	NAME	CALL SIGN				
1	2	3	4	5	6	7	8
Bangkok (VTBB)	-	Mumbai	-	LDD	AMHS	H24	
		Hong Kong	-	LDD	AMHS	H24	
		Yangon	-	LDD	AMHS	H24	
		Kuala Lumpur	-	LDD	AMHS	H24	
		Vientiane	-	LDD	AMHS	H24	
		Singapore	-	LDD	AMHS	H24	
		Dhaka	-	LDD	AMHS	H24	
		Ho Chi Minh	-	LDD	AFTN	H24	
		Phnom Penh	-	LDD	AMHS	H24	
		Rome	-	LDD	AMHS	H24	
		Beijing	-	LDD	AMHS	H24	
		Paro	-	LDD	AMHS	H24	
		Bangkok/ Don Mueang International Airport	-	LDD	AFTN	H24	
		Chiang Mai/ Chiang Mai International Airport	-	LDD	AFTN	H24	
		Chiang Rai/ Mae Fah Luang-Chiang Rai International Airport	-	LDD	AFTN	H24	
		Phuket/ Phuket International Airport	-	LDD	AFTN	H24	
		Bangkok/ Suvarnabhumi International Airport	-	LDD	AFTN	H24	
		Rayong/ U-Tapao Rayong Pattaya International Airport	-	LDD	AFTN	H24	
		Songkhla/ Hat Yai International Airport	-	LDD	AFTN	H24	
		Buri Ram Airport	-	LDD	AFTN	H24	
		Chumphon	-	LDD	AFTN	H24	
		Khon Kaen	-	LDD	AFTN	H24	
		Krabi	-	LDD	AFTN	H24	
		Lampang	-	LDD	AFTN	H24	
		Loei	-	LDD	AFTN	H24	
		Lop Buri/ Sa Pran Nak	-	LDD	AFTN	H24	
		Mae Hong Son	-	LDD	AFTN	H24	
		Nakhon Phanom	-	LDD	AFTN	H24	
		Nakhon Ratchasima	-	LDD	AFTN	H24	
		Nakhon Sawan	-	LDD	AFTN	H24	
		Nakhon Si Thammarat	-	LDD	AFTN	H24	
		Nan/ Nan Nakhon	-	LDD	AFTN	H24	
		Narathiwat	-	LDD	AFTN	H24	
		Phetchabun	-	LDD	AFTN	H24	
		Phitsanulok	-	LDD	AFTN	H24	
		Phrae	-	LDD	AFTN	H24	
		Prachuap Khiri Khan/ Hua Hin	-	LDD	AFTN	H24	
		Ranong	-	LDD	AFTN	H24	
		Roi Et	-	LDD	AFTN	H24	
		Sakon Nakhon/ Ban Khai	-	LDD	AFTN	H24	
		Songkhla	-	LDD	AFTN	H24	
		Sukhothai	-	LDD	AFTN	H24	
		Surat Thani	-	LDD	AFTN	H24	
		Surat Thani/ Samui	-	LDD	AFTN	H24	
		Tak/ Mae Sot	-	LDD	AFTN	H24	
		Trang	-	LDD	AFTN	H24	
		Trat/ Khao Sring	-	LDD	AFTN	H24	
		Ubon Ratchathani	-	LDD	AFTN	H24	
		Udon Thani	-	LDD	AFTN	H24	
		Yala/ Betong	-	LDD	AFTN	H24	

**INTENTIONALLY BLANK**



## GEN 4. CHARGES FOR AERODROMES/HELIPORTS AND AIR NAVIGATION SERVICES

### GEN 4.1 AERODROME/HELIPORT CHARGES

#### 1. General

The charges set out hereunder are collected in accordance with the Air Navigation Act.B.E. 2497 including the amendments concerned.

#### 2. Landing charges

Landing rates is based daily on maximum permissible take-off weight of the aircraft as specified in its Flight Manual as follows:

2.1 Rates for airports of Department of Airports are as follows:

- a) First 50 metric tons: not exceeding 85 Baht per metric ton;
- b) Over 50 to 100 metric tons: the charge for (a) plus not exceeding 95 Baht for every metric ton in excess of 50 metric tons; and
- c) Over 100 metric tons: the charge for (a) and (b) plus not exceeding 105 Baht for every metric ton in excess of 100 metric tons;

2.2 Rates for airport of Airports of Thailand are as follows:

- a) First 10 metric tons: not exceeding 1,150 Baht;
- b) Over 10 up to 50 metric tons: the charge for (a) plus not exceeding 135 Baht for every metric ton excess of 10 metric tons;
- c) Over 50 up to 100 metric tons: the charge for (a) and (b) plus not exceeding 155 Baht for every metric ton in excess of 50 metric tons; and
- d) Over 100 metric tons: the charge for (a) and (b) and (c) plus not exceeding 175 Baht for every metric ton in excess of 100 metric tons.

2.3 At Samui airport, Sukhothai airport and Trat airport, rate will be charged not exceeding 100 Baht per metric ton.

2.4 U-Tapao Rayong Pattaya airports, the charges are not exceeding the rates for aerodromes in 2.1.

2.5 Songkhla airports, the charges are not exceeding 50% of the rates for aerodromes in 2.1.

2.6 Other aerodromes not mentioned above and all temporary areas for take-off and landing of aircraft, the charges are not exceeding 25% of the rates for aerodromes in 2.1.

Any fraction of a metric ton (1 000 Kilograms) is counted as a full metric ton.

#### Reductions

- a) Landing rates for domestic flights at aerodromes in 2.3, 2.4, 2.5, 2.6, the charges are not exceeding 50%;
- b) Landing at U-Tapao Rayong Pattaya exporting of Thai fruits, the charges are not exceeding 50% of the rates for aerodromes in 2.4; and
- c) If a landing is made in conjunction with the seasonal festival or for flight training at aerodromes in 2.1, 2.3, 2.4, 2.5, 2.6 the charges are not exceeding 50%.

#### Exemptions

- a) Foreign military aircraft of countries that exempt Thai military aircraft from landing charges in a reciprocal manner
- b) Foreign government-owned aircraft or aircraft wholly chartered by foreign government in use of carrying heads of their states, guests of their Majesties the King and the Queen of the Kingdom of Thailand or guests of Thai Government to and from the Kingdom of Thailand
- c) Aircraft used in International Red Cross services;
- d) Aircraft registered on behalf of State; and
- e) Aircraft with the permission of the Minister of Transport.

### 3. Passenger service charges

3.1 Passengers departing from any airports for foreign destination will be charged as follows:

3.1.1 Suvarnabhumi, Don Mueang, Chiang Mai, Mae Fah Luang-Chiang Rai, Hat Yai, and Phuket airports: not exceeding 700 Baht

3.1.2 Samui airports: not exceeding 700 Baht

3.1.3 Other airports: not exceeding 400 Baht.

3.2 Passengers departing from domestic destination airports will be charged as follows:

3.2.1 Samui and Sukhothai airports: not exceeding 400 Baht;

3.2.2 Trat airport: not exceeding 200 Baht;

3.2.3 Suvarnabhumi, Don Mueang, Chiang Mai, Mae Fah Luang-Chiang Rai, Hat Yai, and Phuket airports: not exceeding 100 Baht; and

3.2.4 Airports of Department of Airports and other airports: not exceeding 50 Baht.

#### Payment

The owner or possessor of aircraft or his agent is authorized to collect the passenger service charge from passengers boarding his aircraft, if neither of them are in the Kingdom of Thailand, pilot-in-command or an officer appointed by the Minister of Transport is authorized to collect the charge. The collected charge must be handed over to Airport Manager, together with the boarding passenger list certified by an immigration officer, within 7 days of departure except the charge collected by pilot-in-command must be handed over to Airport Manager before departure. The one who fails to comply with the above mentioned regulations shall be punished by fine three times of the collected charge.

#### Exemptions

- a) Their Majesties the King and the Queen, all the members of the Royal family and their entourage;
- b) His Holiness the Patriarch and his entourage;
- c) Heads of foreign States and their entourage;
- d) The guests of their Majesties the King and the Queen and their entourage;
- e) Government guests and their entourage;
- f) Children two years of age and under;
- g) Passengers in Thai or foreign government-owned aircraft or in the aircraft chartered wholly by Thai or foreign government with evidence showing that it is in government service;
- h) For international flight, transit passengers who do not leave transit area or who have to leave transit area for relaxation because of the delay of flight schedule. For domestic flight, transit passengers who stay within 6 hours or have to stay longer than 6 hours because of the delay of flight schedule; and
- i) Passengers with the permission of the Minister of Transport.

### 4. Storage charges

#### 4.1 Parking Rates

Parking rates is based daily on maximum permissible take-off weight of the aircraft as specified in its Flight Manual as follows:

4.1.1 The rates of not exceeding 100 Baht per metric ton per day will be charged at Samui airport, Sukhothai airport, and Trat airport .

4.1.2 Rates for airport of Airports of Thailand are as follows

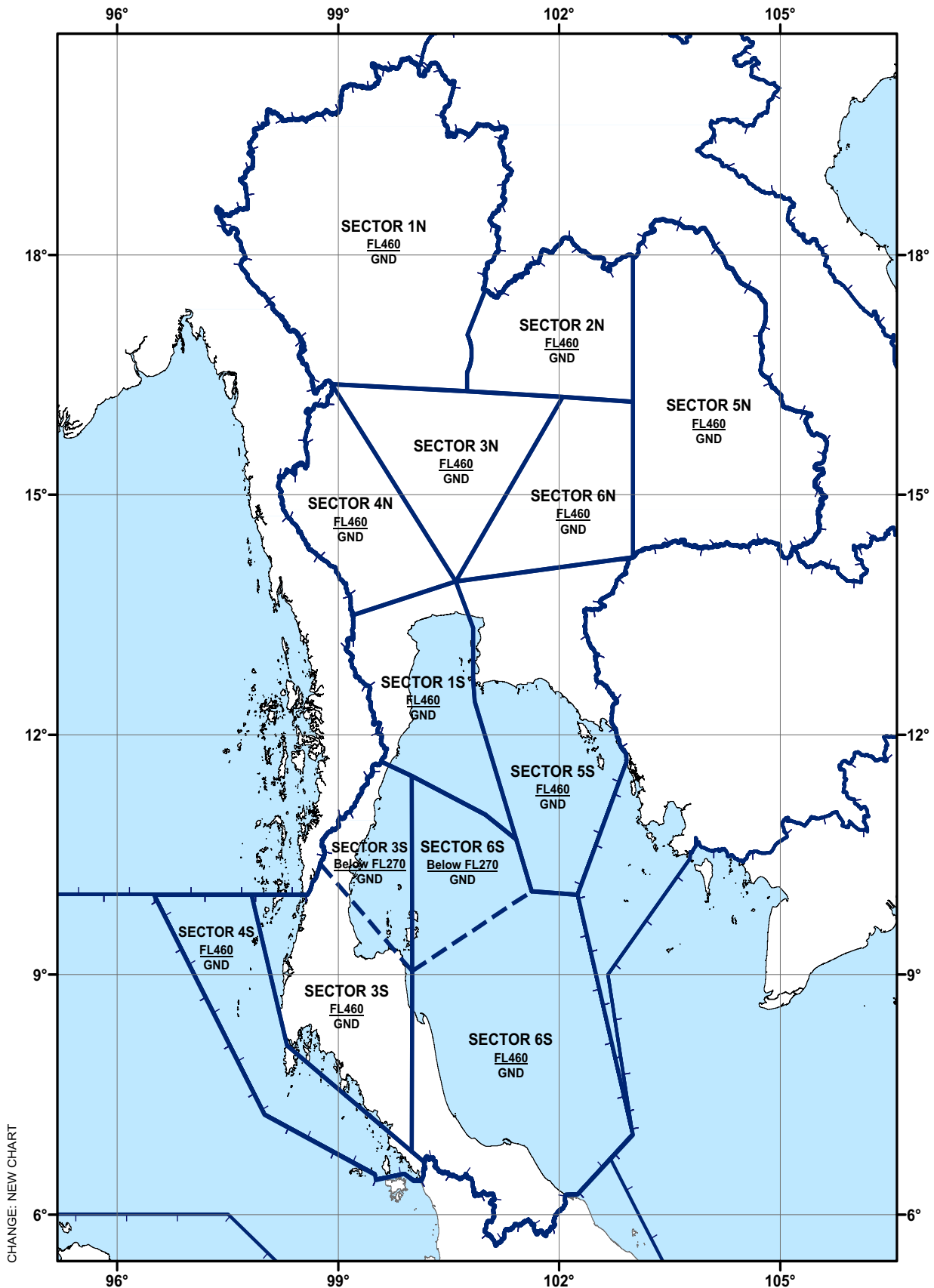
- a) First 50 metric tons: not exceeding 880 Baht per day;
- b) Over 50 up to 100 metric tons: the charge for (a) plus not exceeding 14 Baht for every metric ton in excess of 50 metric tons; and
- c) Over 100 metric tons: the charge for (a) and (b) plus not exceeding 7 Baht for every metric ton in excess of 100 metric tons.

4.1.3 Rates for airports of Department of Airports, other aerodromes, and temporary areas for take-off and landing of aircraft are as follows:

- a) First 50 metric tons: not exceeding 650 Baht per day;
  - b) Over 50 up to 100 metric tons: the charge for (a) plus not exceeding 10 Baht for every metric ton in excess of 50 metric tons; and
  - c) Over 100 metric tons: the charge for (a) and (b) plus not exceeding 5 Baht for every metric ton in excess of 100 metric tons.
- d) From the date 15th onward of aircraft progressive rate for aerodrome in 4.1.1, 4.1.2, 4.1.3 will be as follow;
- From the date 15th – 29th, the charge will be 2 folds of charge rate per day.
  - From the date 30th – 44th, the charge will be 3 folds of charge rate per day
  - From the date 45th – 59th, the charge will be 4 folds of charge rate per day.
  - From the date 60th – 74th, the charge will be 5 folds of charge rate per day.
  - From the date 75th – 89th, the charge will be 6 folds of charge rate per day
  - From the date 90th – 104th, the charges will be 7 folds of charge rate per day.

<p>Name Lateral limits Vertical limits Class of airspace</p> <p>1</p>	<p>Unit providing service</p> <p>2</p>	<p>Call sign Language Area and conditions of use Hours of service</p> <p>3</p>	<p>Frequency/Purpose</p> <p>4</p>	<p>Remarks</p> <p>5</p>
<p><b>UDON CONTROLLED AIRSPACES</b> <b>A. UDON CONTROL ZONE</b> The airspace within a circle of 10 NM radius centred on UDN DVOR/DME (172304.20N1024630.05E) up to but not including 3000 FT AGL GND Class of airspace: C <b>B. UDON TERMINAL CONTROL AREA</b> The airspace enclosed by a circle of 30 NM radius centred on UDN DVOR/DME (172304.20N1024630.05E) Excluding the Laos territory. ALT 11000 FT 2000 FT Class of airspace: C</p>	<p>Group of Provincial Approach Air Traffic Control (Khon Kaen Sector)</p>	<p>Udon Approach (English, Thai) As AD OPR HR</p>	<p>126.2 MHZ / 265.9 MHZ 119.45 MHZ 121.5 MHZ/EMERG</p>	<p>VTBBZAZX Tel: +662 285 9611 Fax: +662 285 9610 Backup frequency</p>
<p><b>U-TAPAO CONTROLLED AIRSPACES</b> <b>A. U-TAPAO CONTROL ZONE</b> The airspace within a circle of 5 NM radius centred on U-Tapao aerodrome (124046.6N1010017.7E) up to but not including 2000 FT AGL GND Class of airspace: C <b>B. U-TAPAO TERMINAL CONTROL AREA</b> The airspace enclosed by a circle of 50 NM radius centred on U-Tapao aerodrome (124046.6N1010017.7E) 1. From 5 NM to 15 NM radius measured from the centre of the aerodrome, 700 FT above ground level to unlimited. 2. From 15 NM to 50 NM radius measured from the centre of the aerodrome, 2 000 FT above ground level to unlimited with the following exception: (i) U-Tapao Control Zone (ii) That portion overlapped by Bangkok Alfa Control Area and Hua Hin Terminal Control Area. (iii) All airspace on airways A464, R468, G463 and G458 from FL65 to FL460</p>	<p>U-Tapao APP</p>	<p>U-Tapao Approach (English, Thai) H24</p>	<p>119.7 MHZ/PRI 134.5 MHZ/SEC 273.3 MHZ/PRI 238.3 MHZ/SEC 121.5 MHZ/EMERG 243.0 MHZ/EMERG</p>	<p>VTBUZPZX Tel: +663 824 5196</p>
<p><b>AREA OUTSIDE CONTROL AIRSPACE</b> The area outside control airspace (outside airways TMA and CTR), but within Bangkok FIR. Class of airspace: G</p>	<p>Bangkok ACC</p>	<p>Bangkok Control (English, Thai) H24</p>		<p>See frequency in use at appropriate sectors</p>

### AREAS OF RESPONSIBILITY AND SECTORIZATION OF BANGKOK AREA CONTROL CENTRE (Below FL270)



CHANGE: NEW CHART

February 2020

## VTCT AD 2.1 AERODROME LOCATION INDICATOR AND NAME

## VTCT - CHIANG RAI / Mae Fah Luang-CHIANG RAI INTERNATIONAL AIRPORT

## VTCT AD 2.2 AERODROME GEOGRAPHICAL AND ADMINISTRATIVE DATA

1	ARP coordinates and site at AD	195708.46N 0995258.64E Centre Line of RWY, 1500 M from THR RWY21
2	Direction and distance from (city)	9 KM, NE from city
3	Elevation/Reference temperature	390.23 M (1280 FT) / 35.8°C
4	Geoid Undulation at AD ELEV PSN	NIL
5	MAG VAR/Annual change	0°51'W (2016)/ 0°0'E
6	AD Administration, address, telephone, telefax, telex, AFS	Director of Mae Fah Luang-Chiang Rai International Airport Mae Fah Luang-Chiang Rai International Airport 404 Chiang Rai-Maechan Road Rimkok-Baan Doo Sub-District Amphoe Mueang Chiang Rai 57100 Thailand Tel: +665 379 8000 +665 379 8999 Fax: +665 379 8049 AFS: VTCTYDYX
7	Types of traffic permitted (IFR/VFR)	IFR/VFR
8	Remarks	Operator: Airports of Thailand Public Company Limited (AOT)

## VTCT AD 2.3 OPERATIONAL HOURS

1	Aerodrome Operator	H24
2	Customs and immigration	Customs: 0130-0930 or available on request Immigration: Available with AD hours
3	Health and sanitation	Available on request
4	AIS Briefing Office	2300-1400
5	ATS Reporting Office (ARO)	H24
6	MET Briefing Office	H24
7	ATS	2300 – 1430, Other than this period 1 HR PN to ATC
8	Fuelling	H24
9	Handling	Available with AD hours
10	Security	H24
11	De-icing	NIL
12	Remarks	ATS Reporting Office (ARO): Located at Chiang Mai Air Traffic Control Center (1st floor of tower building) Tel: +669 1818 5798 Fax: +66 5327 7897

VTCT AD 2.4 HANDLING SERVICES AND FACILITIES

1	Cargo-handling facilities	Thai Airways International Public Co.,Ltd. (TG) Website: www.thaicargo.com E-mail: ceifw@thaairways.com xbd3chiangraistation@thaairways.com Tel: +665 379 8242 +665 379 8243 2 Hand pallet trucks Handling weights up to 8 T per day.
2	Fuel/oil types	JET A-1
3	Fuelling facilities/capacity	PTT Oil and Retail Business Public Company Limited Website: www.pttor.com/en/product/commercial/Aviation-Fuel Tel: +665 379 3700 Fax: +665 379 3701 Fuel Refueller Truck: 2 - 1 Capacity: 22,000 L - 1 Capacity: 22,000 L
4	De-icing facilities	NIL
5	Hangar space for visiting aircraft	Not available
6	Repair facilities for visiting aircraft	Not available
7	Remarks	The Airport has provided ground handling agents as following: a. BAGS Ground Services Co.,Ltd. Website: www.bags-groundservices.com E-mail: cei-stationmanager@bags-groundservices.com Tel: +669 5524 4914 +669 3575 1133 b. Chiang Mai Ground Handling Services Co.,Ltd. E-mail: ground.cgs@yahoo.com Tel: +668 3914 6495 +668 0495 9391 c. H.S. Aviation Co.,Ltd. Website: www.hsavia.aero E-mail: ops@hsavia.aero Tel: +668 1901 2070 +668 1916 6294 Fax: +662 531 0509 d. Thai Airways International Public Co.,Ltd. (TG) Website: www.thaigroundservices.com E-mail: ceikk@thaairways.com ceikloffice@thaairways.com Tel: +665 379 8212 +668 9555 2901 +665 379 8205 Fax: +665 379 3060

VTCT AD 2.5 PASSENGER FACILITIES

1	Hotels	In the city
2	Restaurants	Available at the AD and in the city
3	Transportation	Taxi limousine, Taxi meter, Car rental service and public bus
4	Medical facilities	First aid at AD and hospitals in the city
5	Bank and Post Office	In the city / At AD Bank open: 0200-1300 Post Office open: 0130-1400
6	Tourist Office	In the city
7	Remarks	NIL

## VTCT AD 2.11 METEOROLOGICAL INFORMATION PROVIDED

1	Associated MET Office	Aeronautical Meteorological Station - Chiang Rai, Northern Meteorological Center, Thai Meteorological Department (TMD)
2	Hours of service MET Office outside hours	H24 NIL
3	Office responsible for TAF preparation Periods of validity	Supply TAF from Northern Meteorological Center 30 HR
4	Type of landing forecast Interval of issuance	TREND 1 HR
5	Briefing/consultation provided	Personal Consultation Tel: +665 379 3062-3, +665 379 3698-9 Fax: +665 379 3061
6	Flight documentation Language(s) used	NIL
7	Charts and other information available for briefing or consultation	S, U85, Daily Weather Forecast, satellite and radar images
8	Supplementary equipment available for providing information	Automated Weather Observation System (AWOS), Low Level Wind Shear Alert System (LLWAS) and Weather Radar
9	ATS units provided with information	Chiang Rai TWR
10	Additional information (limitation of service, etc.)	NIL

## VTCT AD 2.12 RUNWAY PHYSICAL CHARACTERISTICS

Designations RWY NR	TRUE BRG	Dimensions of RWY(M)	Strength (PCN) and surface of RWY and SWY	THR coordinates RWY end coordinates THR geoid undulation	THR elevation and highest elevation of TDZ of precision APP RWY
1	2	3	4	5	6
03	030°	3000x45	PCN 84/F/D/X/T Asphalt	195625.74N 0995233.61E	390.23 M (1280 FT AMSL)
21	210°	3000x45	PCN 84/F/D/X/T Asphalt	195751.09N 0995323.63E	388.77 M (1275 FT AMSL)

Slope of RWY-SWY	SWY dimensions (M)	CWY dimensions (M)	Strip dimensions (M)	RESA dimensions (M)	Location and description of arresting system	OFZ	Remarks
7	8	9	10	11	12	13	14
-0.05%	60x60	NIL	3180x300	90x90	NIL	YES	The blast pad is provided beyond Runway 21 end; the width is 60 M and the length is 120 M.
0.05%	NIL	NIL	3180x300	300x150	NIL	NIL	

## VTCT AD 2.13 DECLARED DISTANCES

RWY Designator	TORA (M)	TODA (M)	ASDA (M)	LDA (M)	Remarks
1	2	3	4	5	6
03	3000	3000	3060	3000	NIL
21	3000	3000	3000	3000	NIL

VTCT AD 2.14 APPROACH AND RUNWAY LIGHTING

RWY Designator	APCH LGT type LEN INTST	THR LGT colour WBAR	VASIS (MEHT) PAPI	TDZ, LGT LEN	RWY Centre Line LGT Length, spacing, colour, INTST	RWY edge LGT LEN, spacing, colour INTST	RWY End LGT colour WBAR	SWY LGT LEN (M) colour	Remarks
1	2	3	4	5	6	7	8	9	10
03	CAT1 900 M LIH	Green	PAPI 3° Located either side of RWY, 420 M behind RWY THR (63.9 FT)	NIL	NIL	3000 M 60 M White Last 600 M 60 M Amber LIH	Red	60 M Red	NIL
21	SALS 420 M LIH	Green	PAPI 3° Located either side of RWY, 377 M behind RWY THR (59.2 FT)	NIL	NIL	3000 M 60 M White Last 600 M 60 M Amber LIH	Red	60 M Red	NIL

VTCT AD 2.15 OTHER LIGHTING, SECONDARY POWER SUPPLY

1	ABN/IBN location, characteristics and hours of operation	ABN: At Tower Buidling, FLG WG EV 3 SEC
2	LDI location and LGT Anemometer location and LGT	2WDIs at 300 M from THR 03 offset to the left side 120 M from RWY centre line, at 450 M from THR 21 offset to the left side 105 M from RWY centre line. All are illuminated.
3	TWY edge and centre line lighting	EDGE: All TWY
4	Secondary power supply/switch-over time	Secondary power supply to all lighting at AD. Switch-over time 12 SEC.
5	Remarks	NIL

VTCT AD 2.16 HELICOPTER LANDING AREA

1	Coordinates TLOF or THR of FATO Geoid undulation	NIL
2	TLOF and/or FATO elevation M/FT	NIL
3	TLOF and FATO area dimensions, surface, strength, marking	NIL
4	True and MAG BRG of FATO	NIL
5	Declared distance available	NIL
6	APP and FATO lighting	NIL
7	Remarks	NIL

VTCT AD 2.17 ATS AIRSPACE

1	Designation and lateral limits	A circle of 5 NM radius centred on CTR DVOR/DME (195653.65N 0995300.12E)
2	Vertical limits	2000 FT/AGL
3	Airspace classification	C



- Runway 21:

CHIANG RAI OMNI 21 Departure: Required climb gradient 365 ft per NM (6.0%) until 7,000 ft.

Ground speed	Knot	65	75	100	150	200	250	300
Rate of climb 6.0%	(ft/min)	395	456	608	912	1216	1519	1823

No turn before DER.

After departure climb straight ahead until 4,000 ft (or altitude assigned by ATC between 4,000 ft - 6,000 ft), then comply with ATC clearance issued (or as directed by ATC).

### VTCT AD 2.23 ADDITIONAL INFORMATION

#### 1. AERODROME CONFUSION

Aircraft landing at Mae Fah Luang-Chiang Rai International Airport (VTCT) shall be aware of another operative aerodrome, Rob Wiang Airport (VTGR) located 5 miles southeast of Mae Fah Luang-Chiang Rai International Airport (radial 218 from CTR VOR).

### VTCT AD 2.24 CHARTS RELATED TO AN AERODROME

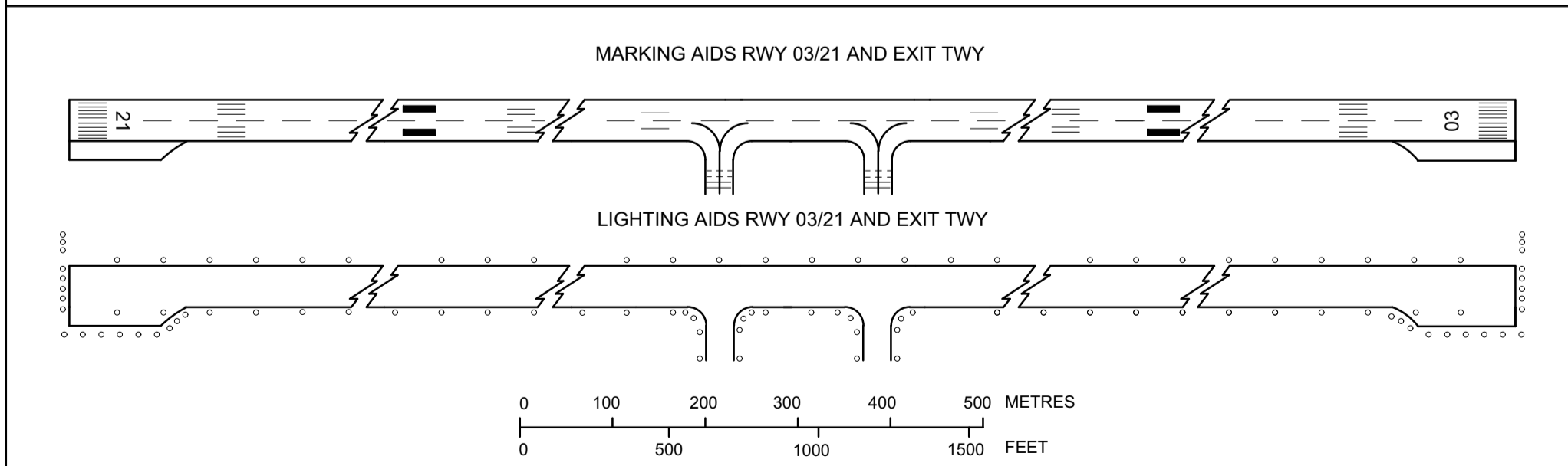
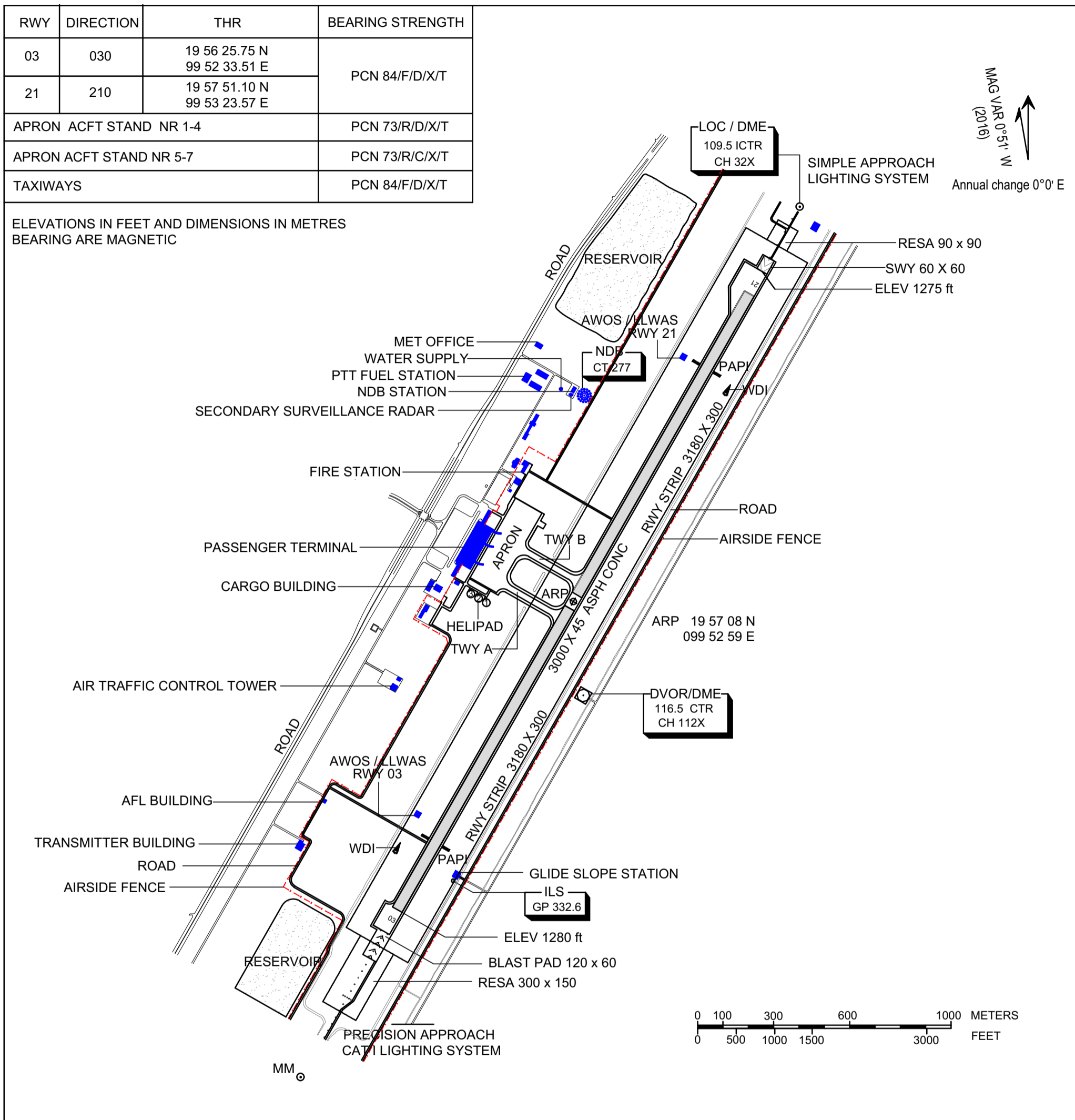
Chart name	Page
Aerodrome chart - ICAO	AD 2-VTCT-2-1
Aircraft Parking/Docking Chart - ICAO	AD 2-VTCT-2-3
Aerodrome Ground Movement Chart - ICAO	AD 2-VTCT-2-5
Aerodrome Obstacle Chart - ICAO Type A - RWY 03/21	AD 2-VTCT-3-1
Standard Departure Chart - Instrument (SID) - ICAO - RNAV RWY 03 - BENVI1A DUBEN1A NUMDO1A PONUK1A	AD 2-VTCT-6-1
Standard Departure Chart - Instrument (SID) - ICAO - RNAV RWY 03 - BENVI1A DUBEN1A NUMDO1A PONUK1A (Tabular description)	AD 2-VTCT-6-3
Standard Departure Chart - Instrument (SID) - ICAO - RNAV RWY 21 - BENVI1B DUBEN1B NUMDO1B PONUK1B	AD 2-VTCT-6-4
Standard Departure Chart - Instrument (SID) - ICAO - RNAV RWY 21 - BENVI1B DUBEN1B NUMDO1B PONUK1B (Tabular description)	AD 2-VTCT-6-5
Instrument Approach Chart - ICAO - VOR RWY 03	AD 2-VTCT-8-1
Instrument Approach Chart - ICAO - VOR RWY 03 (Fix and point list table)	AD 2-VTCT-8-2
Instrument Approach Chart - ICAO - VOR RWY 21	AD 2-VTCT-8-3
Instrument Approach Chart - ICAO - VOR RWY 21 (Fix and point list table)	AD 2-VTCT-8-4
Instrument Approach Chart - ICAO - ILS or LOC y RWY 03	AD 2-VTCT-8-5
Instrument Approach Chart - ICAO - ILS or LOC y RWY 03 (Fix and point list table)	AD 2-VTCT-8-6
Instrument Approach Chart - ICAO - ILS or LOC z RWY 03	AD 2-VTCT-8-7
Instrument Approach Chart - ICAO - ILS or LOC z RWY 03 (Fix and point list table)	AD 2-VTCT-8-8
Instrument Approach Chart - ICAO - ILS or LOC z RWY 03 (Tabular description)	AD 2-VTCT-8-9
Instrument Approach Chart - ICAO - RNP RWY 03	AD 2-VTCT-8-11
Instrument Approach Chart - ICAO - RNP RWY 03 (Tabular description)	AD 2-VTCT-8-12
Instrument Approach Chart - ICAO - RNP RWY 21	AD 2-VTCT-8-13
Instrument Approach Chart - ICAO - RNP RWY 21 (Tabular description)	AD 2-VTCT-8-14

**INTENTIONALLY BLANK**

AERODROME CHART - ICAO 19 57 08 N 099 52 59 E ELEV 1280 ft TWR 118.4 CHIANG RAI / Mae Fah Laung-Chiang Rai Intl

RWY	DIRECTION	THR	BEARING STRENGTH
03	030	19 56 25.75 N 99 52 33.51 E	PCN 84/F/D/X/T
21	210	19 57 51.10 N 99 53 23.57 E	
APRON ACFT STAND NR 1-4			PCN 73/R/D/X/T
APRON ACFT STAND NR 5-7			PCN 73/R/C/X/T
TAXIWAYS			PCN 84/F/D/X/T

ELEVATIONS IN FEET AND DIMENSIONS IN METRES BEARING ARE MAGNETIC



CHANGE : RESA 21 DIMENSION REVISED. SWY 21 CANCELLED. BLAST PAD 03 ADDED.

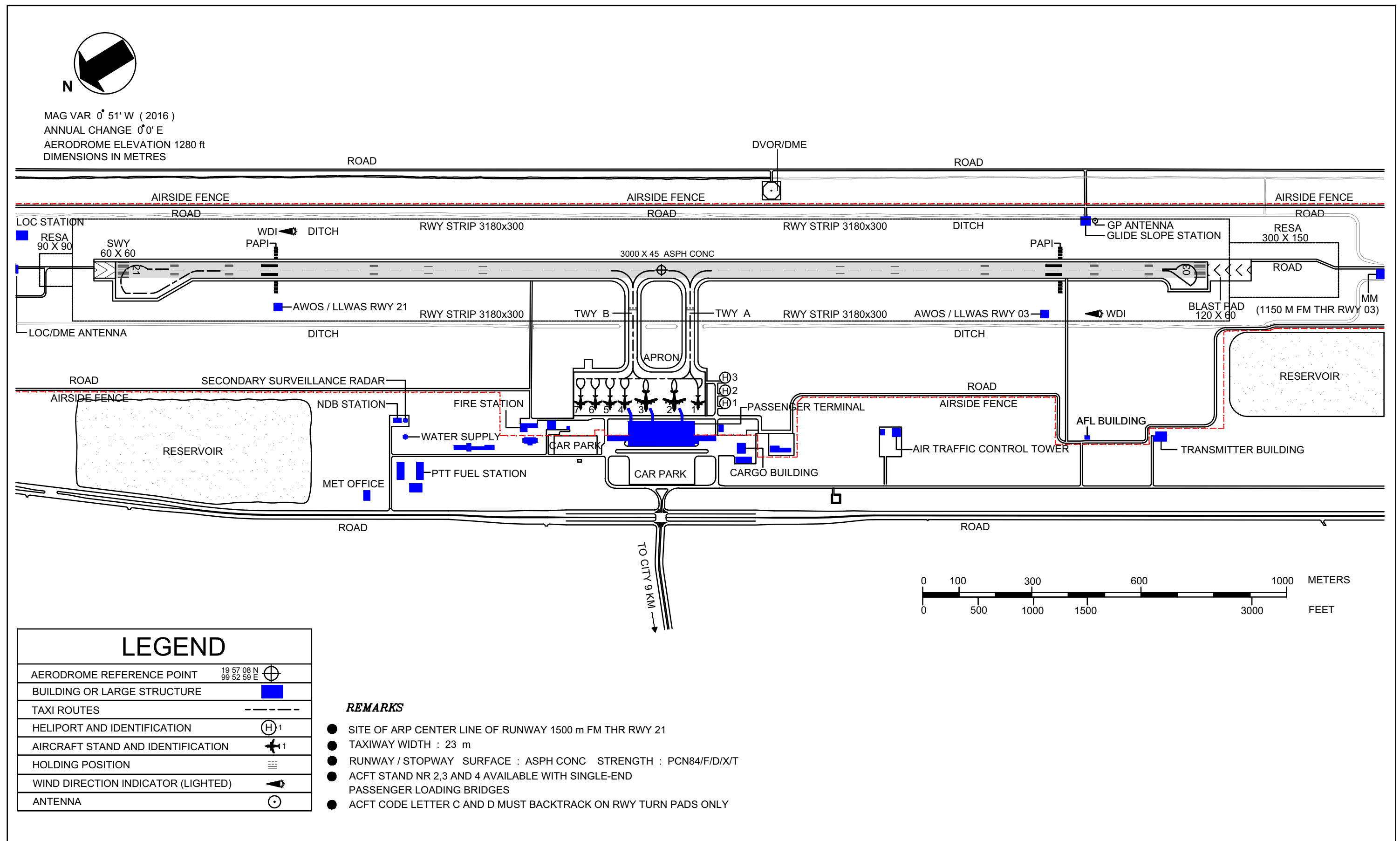
**INTENTIONALLY BLANK**

# Aerodrome Ground Movement Chart - ICAO

APRON ELEV  
1274 ft

TWR 118.4

# CHIANG RAI / Mae Fah Laung-Chiang Rai Intl



**INTENTIONALLY BLANK**

## VTBP AD 2.1 AERODROME LOCATION INDICATOR AND NAME

## VTBP - PRACHUAP KHIRIKHAN / PRACHUAP AIRPORT

## VTBP AD 2.2 AERODROME GEOGRAPHICAL AND ADMINISTRATIVE DATA

1	ARP coordinates and site at AD	114718.30N 0994816.65E
2	Direction and distance from (city)	3 KM SE of Prachuap Khirikhan Province
3	Elevation/Reference temperature	16.847 FT/25.5°C
4	Geoid Undulation at AD ELEV PSN	NIL
5	MAG VAR/Annual change	NIL
6	AD Administration, address, telephone, telefax, telex, AFS	Wing 5, Prachuap Air Force Base Prachuap Khirikhan Province Thailand Tel: +663 260 3919 Fax: +662 534 6000 Ext.60550 AFS: VTBPYXYX
7	Types of traffic permitted (IFR/VFR)	VFR
8	Remarks	Operator: Royal Thai Air Force

## VTBP AD 2.3 OPERATIONAL HOURS

1	Aerodrome Operator	2300-1100 every day
2	Customs and immigration	NIL
3	Health and sanitation	NIL
4	AIS Briefing Office	0100-0900 every day
5	ATS Reporting Office (ARO)	NIL
6	MET Briefing Office	2300-1100 every day
7	ATS	2300-1100 every day
8	Fuelling	0100-0900 MON-FRI
9	Handling	0100-0900 MON-FRI
10	Security	H24
11	De-icing	NIL
12	Remarks	Outside these HR services are available O/R. Request to be submitted to TWR not later than 0900 UTC.

## VTBP AD 2.4 HANDLING SERVICES AND FACILITIES

1	Cargo-handling facilities	NIL
2	Fuel/oil types	JP8
3	Fuelling facilities/capacity	2 Trucks 8000 L, 75 L/MIN
4	De-icing facilities	NIL
5	Hangar space for visiting aircraft	NIL
6	Repair facilities for visiting aircraft	NIL
7	Remarks	NIL

**VTBP AD 2.5 PASSENGER FACILITIES**

1	Hotels	Near the AD and in the city
2	Restaurants	In the city
3	Transportation	Car hire from and to the city
4	Medical facilities	First aid at Aerodrome. Hospital in the city
5	Bank and Post Office	In the city
6	Tourist Office	Office in the city
7	Remarks	NIL

**VTBP AD 2.6 RESCUE AND FIRE FIGHTING SERVICES**

1	AD category for fire fighting	Within ATS HR; 1 fire fighting trucks with 10,000 L Of water 1,500 L of form, Within ATS HR; 1 fire fighting trucks with 4,000 L Of water 500 L of form, Command post vehicle 1
2	Rescue equipment	Yes, 1 boat of 15 persons
3	Capability for removal of disabled aircraft	NIL
4	Remarks	NIL

**VTBP AD 2.7 SEASONAL AVAILABILITY - CLEARING**

1	Types of clearing equipment	NIL
2	Clearance priorities	NIL
3	Remarks	The aerodrome is available all seasons.

**VTBP AD 2.8 APRONS, TAXIWAYS AND CHECK LOCATIONS/POSITIONS DATA**

1	Apron surface and strength	Surface: Asphalt Strength: PCN 45/F/B/X/T
2	Taxiway width, surface and strength	Width: TWY A 50 FT, TWY B 30 FT Surface: Asphalt Strength: PCN 43/F/A/X/T (TWY A), PCN 45/F/B/X/T (TWY B)
3	Altimeter checkpoint location and elevation	Location: At apron Elevation: 16.847 FT (5.135 M)
4	VOR checkpoints	NIL
5	INS checkpoints	NIL
6	Remarks	NIL

**VTBP AD 2.9 SURFACE MOVEMENT GUIDANCE AND CONTROL SYSTEM AND MARKINGS**

1	Use of aircraft stand ID signs, TWY guide lines and visual docking/parking guidance system of aircraft stands	Taxiing guidance signs at all intersections with TWY and RWY and at all holding position. Parking follow the signalman.
2	RWY and TWY markings and LGT	RWY: Designation, THR, centre line and distance Markers lighted. Runway edge light provided For RWY 08/26 only. TWY: Taxiway edge light, Centre line and holding positions at all TWY/RWY intersections marked.
3	Stop bars	NIL
4	Remarks	NIL



## VTBP AD 2.15 OTHER LIGHTING, SECONDARY POWER SUPPLY

1	ABN/IBN location, characteristics and hours of operation	ABN: At tower building
2	LDI location and LGT Anemometer location and LGT	NIL
3	TWY edge and centre line lighting	EDGE: All TWY A, B Centre line: NIL
4	Secondary power supply/switch-over time	Secondary power supply :Limited to RDO/COM only Switching-over time : Automatic with in 15 sec
5	Remarks	NIL

## VTBP AD 2.16 HELICOPTER LANDING AREA

1	Coordinates TLOF or THR of FATO Geoid undulation	NIL
2	TLOF and/or FATO elevation M/FT	NIL
3	TLOF and FATO area dimensions, surface, strength, marking	NIL
4	True and MAG BRG of FATO	NIL
5	Declared distance available	NIL
6	APP and FATO lighting	NIL
7	Remarks	Helicopter LDG/TKOF by using runways.

## VTBP AD 2.17 ATS AIRSPACE

1	Designation and lateral limits	A circle of 20 NM radius centred on 114718.3045N 0994816.6455E
2	Vertical limits	6000 FT/AGL
3	Airspace classification	D
4	ATS unit call sign Language(s)	Prachuap Tower English, Thai
5	Transition altitude	11000 FT
6	Remarks	NIL

## VTBP AD 2.18 ATS COMMUNICATION FACILITIES

Service designation	Call sign	Frequency	Hours of operation	Remarks
1	2	3	4	5
TWR	Prachuap TWR	351.1 MHZ 135.9 MHZ 236.6 MHZ *121.5 MHZ *243.0 MHZ	23:00-11:00	Primary operation *Emergency Freq.
GND	Prachuap GND	257.8 MHZ 121.75 MHZ	23:00-11:00	Secondary operation

**VTBP AD 2.19 RADIO NAVIGATION AND LANDING AIDS**

Type of aid, MAG VAR CAT of ILS/MLS (For VOR/ILS/MLS, give declination)	ID	Frequency	Hours of operation	Position of transmitting antenna coordinates	Elevation of DME transmitting antenna	Remarks
1	2	3	4	5	6	7
TACAN	PCK	CH 84X TX1171 MHz RX 1108 MHz	H24	114712.3851N 0994730.2153E	20 M	NIL
NDB	PCK	320 KHZ	2300-1100	114729.8861N 0994800.0279E	20 M	

**VTBP AD 2.20 LOCAL AERODROME REGULATIONS**

NIL

**VTBP AD 2.21 NOISE ABATEMENT PROCEDURES**

NIL

**VTBP AD 2.22 FLIGHT PROCEDURES**

NIL

**VTBP AD 2.23 ADDITIONAL INFORMATION**

NIL

**VTBP AD 2.24 CHARTS RELATED TO AN AERODROME**

NIL

## VTPH AD 2.1 AERODROME LOCATION INDICATOR AND NAME

## VTPH - PRACHUAP KHIRI KHAN / HUA HIN AIRPORT

## VTPH AD 2.2 AERODROME GEOGRAPHICAL AND ADMINISTRATIVE DATA

1	ARP coordinates and site at AD	123749.15N 0995712.40E
2	Direction and distance from (city)	7 KM, NE from city
3	Elevation/Reference temperature	62 FT/30°C
4	Geoid Undulation at AD ELEV PSN	NIL
5	MAG VAR/Annual change	0.56°W (2016) /0.01°E
6	AD Administration, address, telephone, telefax, telex, AFS	Director of Hua Hin Airport Hua Hin Airport Phetkasem Road, Amphoe Hua Hin Prachuap Khirikhan Province Thailand Tel: +663 252 0182 Fax: +663 252 0182 AFS: VTPHYDYX
7	Types of traffic permitted (IFR/VFR)	IFR/VFR
8	Remarks	Operator: Department of Airports

## VTPH AD 2.3 OPERATIONAL HOURS

1	Aerodrome Operator	2300-1100
2	Customs and immigration	On request
3	Health and sanitation	On request
4	AIS Briefing Office	NIL
5	ATS Reporting Office (ARO)	2300-1100
6	MET Briefing Office	NIL
7	ATS	2300-1100
8	Fuelling	2330-1530 Other than this period 1 HR PN to airport
9	Handling	NIL
10	Security	H24
11	De-icing	NIL
12	Remarks	ATS Reporting Office (ARO): Located at Hua Hin Air Traffic Control Centre (1st floor of tower building) Tel: +663 252 2512 Fax: +663 252 0831 Ext. 5230

**VTPH AD 2.4 HANDLING SERVICES AND FACILITIES**

1	Cargo-handling facilities	NIL
2	Fuel/oil types	JET A-1, AVGAS 100KK, JP8
3	Fuelling facilities/capacity	2 JET A-1 Refuellers @ 12,000 L 1 AVGAS 100LL Refueller @ 5,000 L 750-1100 L/Min
4	De-icing facilities	NIL
5	Hangar space for visiting aircraft	NIL
6	Repair facilities for visiting aircraft	NIL
7	Remarks	NIL

**VTPH AD 2.5 PASSENGER FACILITIES**

1	Hotels	In the city
2	Restaurants	In the airport
3	Transportation	Limousines, car rent, Taxi
4	Medical facilities	First AID at AD and hospital in the city
5	Bank and Post Office	In the city
6	Tourist Office	NIL
7	Remarks	NIL

**VTPH AD 2.6 RESCUE AND FIRE FIGHTING SERVICES**

1	AD category for fire fighting	Category 6
2	Rescue equipment	Yes
3	Capability for removal of disabled aircraft	NIL
4	Remarks	NIL

**VTPH AD 2.7 SEASONAL AVAILABILITY - CLEARING**

1	Types of clearing equipment	NIL
2	Clearance priorities	NIL
3	Remarks	The aerodrome is available all seasons.

**VTPH AD 2.8 APRONS, TAXIWAYS AND CHECK LOCATIONS/POSITIONS DATA**

1	Apron surface and strength	Surface: Concrete Strength: PCN 45/R/B/Y/T
2	Taxiway width, surface and strength	Width: 23 M Surface: Concrete and asphalt Strength: PCN 42/F/B/Y/T
3	Altimeter checkpoint location and elevation	Location : At Apron Elevation : 6.786 M (22.258 FT)
4	VOR checkpoints	NIL
5	INS checkpoints	NIL
6	Remarks	NIL