

VTUV AD 2.1 AERODROME LOCATION INDICATOR AND NAME

VTUV - ROI ET / ROI ET AIRPORT

VTUV AD 2.2 AERODROME GEOGRAPHICAL AND ADMINISTRATIVE DATA

1	ARP coordinates and site at AD	160700.34N 1034625.67E Centre of RWY 1050 M. from THR RWY 18
2	Direction and distance from (city)	19 KM E from city
3	Elevation/Reference temperature	451 FT /28°C
4	Geoid Undulation at AD ELEV PSN	NIL
5	MAG VAR/Annual change	0.82°W(2016) /0.02°W
6	AD Administration, address, telephone, telefax, telex, AFS	Director of Roi Et Airport Roi Et Airport, Roi Et-Phonthong Road, Nongphok, Thawatburi, Roi Et, 45170 Thailand Tel: +664 351 8246-8 Fax: +664 351 8253 AFS: VTUVYDYX
7	Types of traffic permitted (IFR/VFR)	IFR/VFR
8	Remarks	Operator: Department of Airports

VTUV AD 2.3 OPERATIONAL HOURS

1	Aerodrome Operator	2300-1400
2	Customs and immigration	NIL
3	Health and sanitation	NIL
4	AIS Briefing Office	NIL
5	ATS Reporting Office (ARO)	2300-1400
6	MET Briefing Office	NIL
7	ATS	2300-1400
8	Fuelling	NIL
9	Handling	NIL
10	Security	NIL
11	De-icing	NIL
12	Remarks	ATS Reporting Office (ARO): Located at Ubon Ratchathani Air Traffic Control Centre (1st floor of tower building) Tel: +664 525 6407, +668 9488 2157 Fax: +664 524 0798 Ext. 7874

VTUV AD 2.4 HANDLING SERVICES AND FACILITIES

1	Cargo-handling facilities	NIL
2	Fuel/oil types	NIL
3	Fuelling facilities/capacity	NIL
4	De-icing facilities	NIL
5	Hangar space for visiting aircraft	NIL
6	Repair facilities for visiting aircraft	NIL

7	Remarks	NIL
---	---------	-----

VTUV AD 2.5 PASSENGER FACILITIES

1	Hotels	In the city
2	Restaurants	In the city
3	Transportation	Taxi and car hire from the airport
4	Medical facilities	Hospital in the city
5	Bank and Post Office	Bank and Post office in the city
6	Tourist Office	In the city
7	Remarks	NIL

VTUV AD 2.6 RESCUE AND FIRE FIGHTING SERVICES

1	AD category for fire fighting	Category 6
2	Rescue equipment	Yes
3	Capability for removal of disabled aircraft	NIL
4	Remarks	NIL

VTUV AD 2.7 SEASONAL AVAILABILITY - CLEARING

1	Types of clearing equipment	NIL
2	Clearance priorities	NIL
3	Remarks	The aerodrome is available all seasons.

VTUV AD 2.8 APRONS, TAXIWAYS AND CHECK LOCATIONS/POSITIONS DATA

1	Apron surface and strength	Surface: Concrete Strength: PCN 45/R/C/X/T
2	Taxiway width, surface and strength	Width: 23 M Surface: Concrete and asphalt Strength: PCN 42/F/C/X/T
3	Altimeter checkpoint location and elevation	NIL
4	VOR checkpoints	NIL
5	INS checkpoints	NIL
6	Remarks	NIL

VTUV AD 2.9 SURFACE MOVEMENT GUIDANCE AND CONTROL SYSTEM AND MARKINGS

1	Use of aircraft stand ID signs, TWY guide lines and visual docking/parking guidance system of aircraft stands	NIL
2	RWY and TWY markings and LGT	RWY and TWY: Marked and lighted
3	Stop bars	NIL
4	Remarks	NIL

VTUV AD 2.10 AERODROME OBSTACLES

In approach/TKOF areas			In circling areas and at AD		Remarks
1			2		3
RWY/Area affected	Obstacle type Elevation Markings/LGT	Coordinates	Obstacle type Elevation Markings/LGT	Coordinates	
a	b	c	a	b	
NIL	NIL	NIL	NIL	NIL	NIL

VTUV AD 2.11 METEOROLOGICAL INFORMATION PROVIDED

1	Associated MET Office	Aeronautical Meteorological Station-Roi Et, Lower Northeastern Meteorological Center, Thai Meteorological Department (TMD)
2	Hours of service MET Office outside hours	2200-1400 NIL
3	Office responsible for TAF preparation Periods of validity	Supply TAF from Lower Northeastern Meteorological Center 24 HR
4	Type of landing forecast Interval of issuance	TREND 1 HR
5	Briefing/consultation provided	Personal Consultation Tel: +664 351 9886 ext. 7408
6	Flight documentation Language(s) used	NIL
7	Charts and other information available for briefing or consultation	S, U85, Daily Weather Forecast, satellite and radar images
8	Supplementary equipment available for providing information	Automated Weather Observation System (AWOS)
9	ATS units provided with information	Roi Et TWR
10	Additional information (limitation of service, etc.)	NIL

VTUV AD 2.12 RUNWAY PHYSICAL CHARACTERISTICS

Designations RWY NR	TRUE BRG	Dimensions of RWY(M)	Strength (PCN) and surface of RWY and SWY	THR coordinates RWY end coordinates THR geoid undulation	THR elevation and highest elevation of TDZ of precision APP RWY
1	2	3	4	5	6
18	182.69°	2100x45	PCN 42/F/D/X/T Concrete and asphalt	160734.53N 1034627.20E	THR451 FT TDZ 451 FT
36	002.69°	2100x45	PCN 42/F/D/X/T Concrete and asphalt	160626.14N 1034624.15E	THR451 FT TDZ 451 FT

Slope of RWY-SWY	SWY dimensions (M)	CWY dimensions (M)	Strip dimensions (M)	OFZ	Remarks
7	8	9	10	11	12
0%	60x60	NIL	2340x300	NIL	NIL
0%	60x60	NIL	2340x300	NIL	NIL

VTUV AD 2.13 DECLARED DISTANCES

RWY Designator	TORA (M)	TODA (M)	ASDA (M)	LDA (M)	Remarks
1	2	3	4	5	6
18	2100	2100	2160	2100	NIL
36	2100	2100	2160	2100	NIL

VTUV AD 2.14 APPROACH AND RUNWAY LIGHTING

RWY Designator	APCH LGT type LEN INTST	THR LGT colour WBAR	VASIS (MEHT) PAPI	TDZ, LGT LEN	RWY Centre Line LGT Length, spacing, colour, INTST	RWY edge LGT LEN, spacing, colour INTST	RWY End LGT colour WBAR	SWY LGT LEN (M) colour	Remarks
1	2	3	4	5	6	7	8	9	10
18	RTIL	Green	PAPI LEFT 3° (50.58 FT)	NIL	NIL	2100 M 60 M White, LIH	Red	NIL	NIL
36	SALS 420 M	Green	PAPI LEFT 3° (50.58 FT)	NIL	NIL	2100 M 60 M White, LIH	Red	NIL	NIL

VTUV AD 2.15 OTHER LIGHTING, SECONDARY POWER SUPPLY

1	ABN/IBN location, characteristics and hours of operation	ABN: At tower building FLG W G EV 7 SEC
2	LDI location and LGT Anemometer location and LGT	NIL
3	TWY edge and centre line lighting	EDGE: All taxiways
4	Secondary power supply/switch-over time	Secondary power supply at tower and air field lighting (AFL). Switch-over time: 15 SEC
5	Remarks	NIL

VTUV AD 2.16 HELICOPTER LANDING AREA

1	Coordinates TLOF or THR of FATO Geoid undulation	NIL
2	TLOF and/or FATO elevation M/FT	NIL
3	TLOF and FATO area dimensions, surface, strength, marking	NIL
4	True and MAG BRG of FATO	NIL
5	Declared distance available	NIL
6	APP and FATO lighting	NIL
7	Remarks	NIL

VTUV AD 2.17 ATS AIRSPACE

1	Designation and lateral limits	A circle of 5 NM radius centred on Roi Et DVOR/DME (160700.59N 1034619.45E)
2	Vertical limits	2000 FT/AGL
3	Airspace classification	C
4	ATS unit call sign Language(s)	Roi Et Tower English, Thai
5	Transition altitude	11000 FT
6	Remarks	NIL

VTUV AD 2.18 ATS COMMUNICATION FACILITIES

Service designation	Call sign	Frequency	Hours of operation	Remarks
1	2	3	4	5
APP	Roi Et Approach	125.4 MHZ 121.5 MHZ ¹⁾	As AD OPR HR	¹⁾ Emergency frequency
TWR	Roi Et Tower	119.75 MHZ 236.6 MHZ 121.5 MHZ ¹⁾	As AD OPR HR	
ATIS	Roi Et Airport	128.275 MHZ	As AD OPR HR	

VTUV AD 2.19 RADIO NAVIGATION AND LANDING AIDS

Type of aid, MAG VAR CAT of ILS/MLS (For VOR/ILS/MLS, give declination)	ID	Frequency	Hours of operation	Position of transmitting antenna coordinates	Elevation of DME transmitting antenna	Remarks
1	2	3	4	5	6	7
NDB	RE	319 KHZ	H24	160638.46N 1034641.60E		Coverage orbit data refer from commissioning checked as follows: 50 NM clockwise orbit result found satisfactory. – Bearing 341°-030° at altitude 3 000 FT – Bearing 031°-060° at altitude 3 000 FT – Bearing 061°-340° at altitude 2 000 FT
DVOR/DME	ROT	111.2 MHZ CH 49X	H24	160700.59N 1034619.45E		Coverage orbit data refer from commissioning checked as follows: – 40 NM clockwise orbit flown from radial 001°-360° altitude should not below 2 000 FT – Airway W5 flown to 40 NM at 2 000 FT was checked and found satisfactory
LOC RWY36 ILS CAT I	IROT	109.5 MHZ	H24	160744.28N 1034627.64E		LOC: Designated operation coverage 18 NM, ALT 6700 FT AMSL
GP		332.6 MHZ	H24	160635.76N 1034620.54E		GP: 3 GEG, RDH 50 FT
DME	IROT	CH 32X (109.5 MHZ)	H24	160744.36N 1034625.22E	448FT	DME: Paired with LOC FREQ.

VTUV AD 2.20 LOCAL AERODROME REGULATIONS

All aircraft code letter C and higher are not allowed to turn on runway. The turn shall be made on the runway turn pad only. Any breach done by the aircraft operator shall be recorded and reported to The Civil Aviation Authority of Thailand / The Headquarter of that operator shall be liable for the compensation caused by such violation.

VTUV AD 2.21 NOISE ABATEMENT PROCEDURES

NIL

VTUV AD 2.22 FLIGHT PROCEDURES

1. VFR PROCEDURES

Details of VFR entry and exit procedures, see charts.

2. IFR DEPARTURES OTHER THAN VIA SID

IFR departure procedures described below are determined for the purpose of case when an instrument departure via SID is impossible or undesirable.

3. VISUAL DEPARTURES

Visual departures during take-off and initial climb-out are permitted during the daytime and Visual Meteorological Conditions (VMC). ATC clearance to execute a visual departure may be issued upon request of the pilot or upon initiative of the ATC and accepted by the pilot.

To execute a visual departure

- meteorological conditions in the direction of take-off and the following climb-out shall enable visual reference to terrain up to Minimum Sector Altitude (MSA) or Minimum Flight Altitude (MFA) stated in ATC clearance,
- the pilot shall be responsible for obstacle clearance until such specified altitude,
- the pilot prior to take-off shall agree to execute this procedure,
- the ATC clearance shall be readback,

4. OMNIDIRECTIONAL DEPARTURES

Omnidirectional departures during take-off and initial climb-out are permitted during the day and night. ATC clearance to execute an omnidirectional departure may be issued upon request of the pilot or upon initiative of the ATC and accepted by the pilot.

To execute an omnidirectional departure:

- the pilot shall be maintaining a minimum climb gradient up to specific altitude as published shown as below,
- the pilot shall be responsible for adherence to such obtained ATC clearance,
- the pilot prior to take-off shall agree to execute this procedure,
- The ATC clearance shall be readback,

- Runway 18:

ROIET OMNI 18 Departure: Required climb gradient 201 ft per NM (3.3%) until 2,400 ft.

Ground speed	Knot	65	75	100	150	200	250	300
Rate of climb 3.3%	(ft/min)	217	251	334	501	668	835	1003

No turn before DER.

After departure climb straight ahead until 1,000 ft (or altitude assigned by ATC between 1,000 ft – 2,000 ft), then comply with ATC clearance issued (or as directed by ATC).

- Runway 36:

ROIET OMNI 36 Departure: Required climb gradient 201 ft per NM (3.3%) until 2,400 ft.

Ground speed	Knot	65	75	100	150	200	250	300
Rate of climb 3.3%	(ft/min)	217	251	334	501	668	835	1003

No turn before DER.

After departure climb straight ahead until 1,000 ft (or altitude assigned by ATC between 1,000 ft – 2,000 ft), then comply with ATC clearance issued (or as directed by ATC).

VTUV AD 2.23 ADDITIONAL INFORMATION

- Birds concentration on and in the vicinity of an Aerodrome.

VTUV AD 2.24 CHARTS RELATED TO AN AERODROME

Chart name	Page
Aerodrome Chart - ICAO	AD 2-VTUV-2-1
Standard Departure Chart - Instrument (SID) - ICAO - RNAV RWY 18 - ANKID1A BODUR1A DOTUS1A ENTEK1A RURAR1A SEDNO1A	AD 2-VTUV-6-1
Standard Departure Chart - Instrument (SID) - ICAO - RNAV RWY 18 - ANKID1A BODUR1A DOTUS1A ENTEK1A RURAR1A SEDNO1A (Tabular description)	AD 2-VTUV-6-2
Standard Departure Chart - Instrument (SID) - ICAO - RNAV RWY 18 - ANKID1A BODUR1A DOTUS1A ENTEK1A RURAR1A SEDNO1A (Waypoint list table)	AD 2-VTUV-6-3
Standard Departure Chart - Instrument (SID) - ICAO - RNAV RWY 36 - ANKID1B BODUR1B DOTUS1B ENTEK1B RURAR1B SEDNO1B	AD 2-VTUV-6-5
Standard Departure Chart - Instrument (SID) - ICAO - RNAV RWY 36 - ANKID1B BODUR1B DOTUS1B ENTEK1B RURAR1B SEDNO1B (Tabular description)	AD 2-VTUV-6-6
Standard Departure Chart - Instrument (SID) - ICAO - RNAV RWY 36 - ANKID1B BODUR1B DOTUS1B ENTEK1B RURAR1B SEDNO1B (Waypoint list table)	AD 2-VTUV-6-7
Instrument Approach Chart - ICAO - VOR RWY 18	AD 2-VTUV-8-1
Instrument Approach Chart - ICAO - VOR RWY 18 (Fix and point list table)	AD 2-VTUV-8-2
Instrument Approach Chart - ICAO - VOR RWY 36	AD 2-VTUV-8-3
Instrument Approach Chart - ICAO - VOR RWY 36 (Fix and point list table)	AD 2-VTUV-8-4
Instrument Approach Chart - ICAO - ILS or LOC y RWY 36	AD 2-VTUV-8-5
Instrument Approach Chart - ICAO - ILS or LOC y RWY 36 (Fix and point list table)	AD 2-VTUV-8-6
Instrument Approach Chart - ICAO - ILS or LOC z RWY 36	AD 2-VTUV-8-7
Instrument Approach Chart - ICAO - ILS or LOC z RWY 36 (Tabular description)	AD 2-VTUV-8-8
Instrument Approach Chart - ICAO - ILS or LOC z RWY 36 (Fix and point list table)	AD 2-VTUV-8-9
Instrument Approach Chart - ICAO - ILS or LOC z RWY 36 (Waypoint list table)	AD 2-VTUV-8-10
Instrument Approach Chart - ICAO - RNP RWY 18	AD 2-VTUV-8-11
Instrument Approach Chart - ICAO - RNP RWY 18 (Tabular description 1)	AD 2-VTUV-8-12
Instrument Approach Chart - ICAO - RNP RWY 18 (Tabular description 2)	AD 2-VTUV-8-13
Instrument Approach Chart - ICAO - RNP RWY 36	AD 2-VTUV-8-15
Instrument Approach Chart - ICAO - RNP RWY 36 (Tabular description)	AD 2-VTUV-8-16
Instrument Approach Chart - ICAO - RNP RWY 36 (Waypoint list table)	AD 2-VTUV-8-17
VFR ENTRY PROCEDURE CHART - RWY 18/36	AD 2-VTUV-9-1
VFR ENTRY PROCEDURE CHART - RWY 18/36 (Tabular description)	AD 2-VTUV-9-2
VFR EXIT PROCEDURE CHART - RWY 18/36	AD 2-VTUV-9-3
VFR EXIT PROCEDURE CHART - RWY 18/36 (Tabular description)	AD 2-VTUV-9-4

INTENTIONALLY BLANK

AERODROME CHART - ICAO

16 07 00 N
103 46 26 E

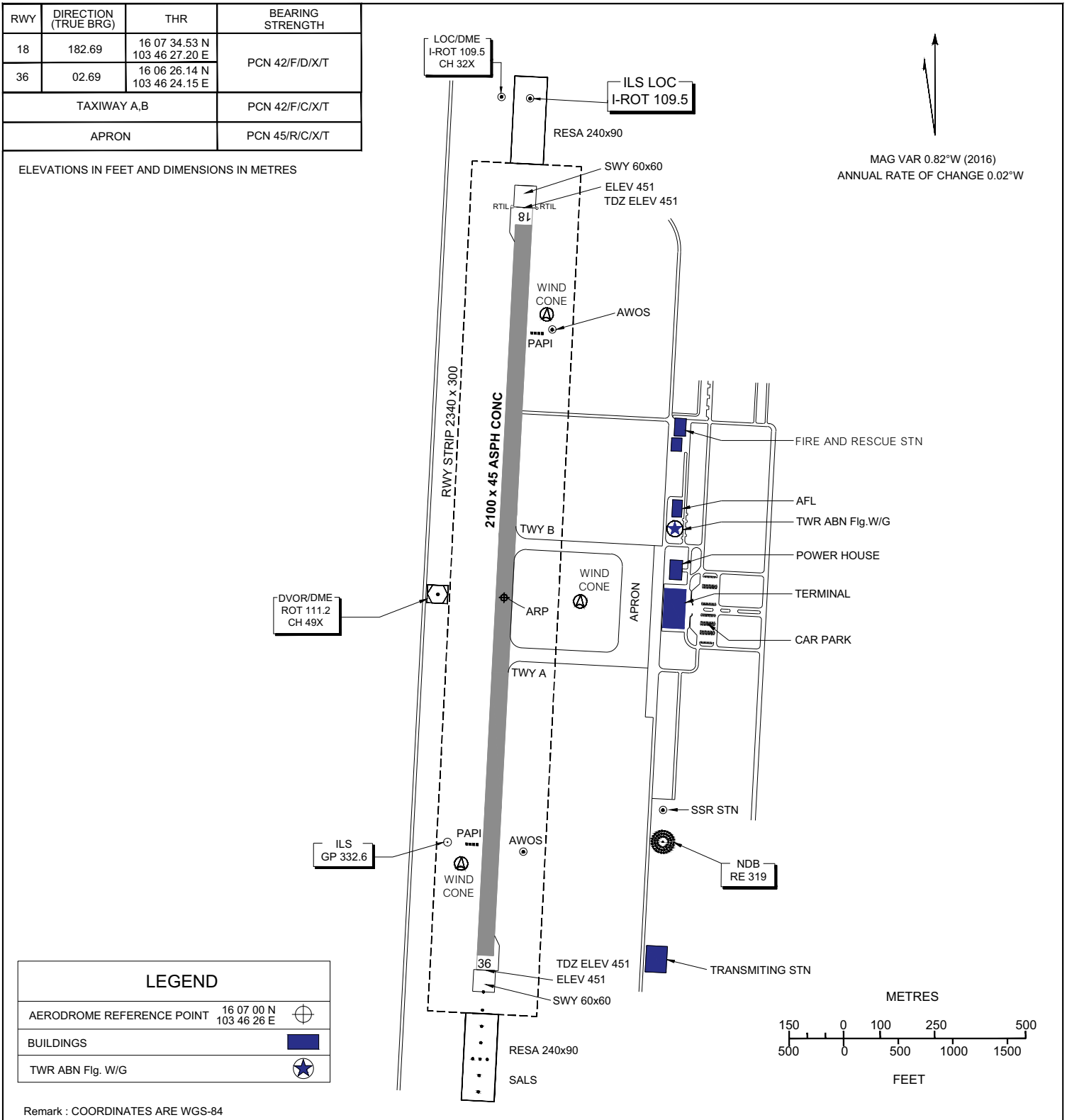
ELEV 451 FT

**TWR 119.75
236.60**

ROI ET / Roi Et

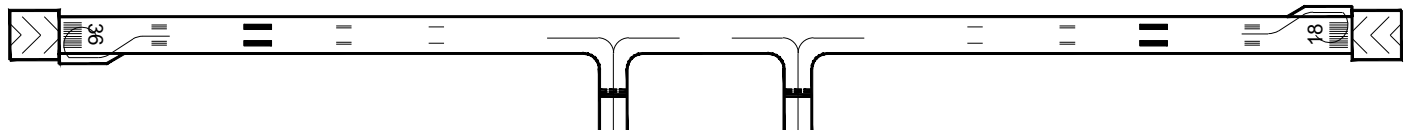
RWY	DIRECTION (TRUE BRG)	THR	BEARING STRENGTH
18	182.69	16 07 34.53 N 103 46 27.20 E	PCN 42/F/D/X/T
36	02.69	16 06 26.14 N 103 46 24.15 E	
TAXIWAY A,B			PCN 42/F/C/X/T
APRON			PCN 45/R/C/X/T

ELEVATIONS IN FEET AND DIMENSIONS IN METRES

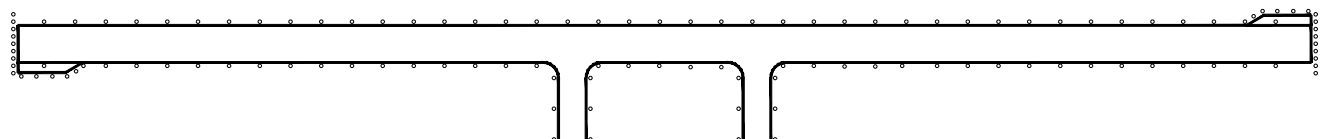


CHANGE : REVISED CHART. RTIL RWY 18 ADDED.

MARKING AIDS RWY 18/36 AND EXIT TWY



LIGHTING AIDS RWY 18/36 AND EXIT TWY



INTENTIONALLY BLANK

**STANDARD DEPARTURE CHART -
INSTRUMENT (SID) - ICAO**

**ROI ET / Roi Et (VTUV)
RNAV RWY18**

ANKID1A BODUR1A DOTUS1A
ENTEK1A RURAR1A SEDNO1A

TABULAR DESCRIPTION

RNAV RWY18											
Serial Number	Path Descriptor	Waypoint Identifier	Flyover	Course ° M (° T)	Magnetic Variation	Distance (NM)	Turn Direction	Altitude (FT)	Speed (KT)	VPA/TCH	Navigation Specification
ANKID1A											
010	-	DER RWY18	-	-	+0.90	-	-	-	-	-	RNP 1
020	CF	SULKO	-	183°(182.5°)	+0.90	6.0	R	+2000	-210	-	RNP 1
030	TF	ANKID	-	218°(216.9°)	+0.90	24.4	-	-7000	-	-	RNP 1
BODUR1A											
010	-	DER RWY18	-	-	+0.90	-	-	-	-	-	RNP 1
020	CF	SULKO	-	183°(182.5°)	+0.90	6.0	R	+2000	-210	-	RNP 1
030	TF	BODUR	-	245°(244.3°)	+0.90	26.4	-	-7000	-	-	RNP 1
DOTUS1A											
010	-	DER RWY18	-	-	+0.90	-	-	-	-	-	RNP 1
020	CF	SULKO	-	183°(182.5°)	+0.90	6.0	R	+2000	-210	-	RNP 1
030	TF	UV106	-	273°(272.5°)	+0.90	7.0	R	-4000	-230	-	RNP 1
040	TF	UV114	-	310°(308.7°)	+0.90	14.7	R	-6000	-	-	RNP 1
050	TF	UV102	-	002°(001.5°)	+0.90	7.9	-	-6000	-	-	RNP 1
060	TF	UV115	-	002°(001.5°)	+0.90	7.0	-	-6000	-	-	RNP 1
070	TF	DOTUS	-	002°(001.5°)	+0.90	6.1	-	-7000	-	-	RNP 1
ENTEK1A											
010	-	DER RWY18	-	-	+0.90	-	-	-	-	-	RNP 1
020	CF	SULKO	-	183°(182.5°)	+0.90	6.0	L	+2000	-210	-	RNP 1
030	TF	ENTEK	-	119°(118.0°)	+0.90	26.5	-	-7000	-	-	RNP 1
RURAR1A											
010	-	DER RWY18	-	-	+0.90	-	-	-	-	-	RNP 1
020	CF	SULKO	-	183°(182.5°)	+0.90	6.0	L	+2000	-210	-	RNP 1
030	TF	UV110	-	093°(092.5°)	+0.90	7.0	L	-4000	-230	-	RNP 1
040	TF	UV116	-	047°(046.2°)	+0.90	18.2	-	-6000	-	-	RNP 1
050	TF	RURAR	-	047°(046.3°)	+0.90	10.0	-	-7000	-	-	RNP 1
SEDNO1A											
010	-	DER RWY18	-	-	+0.90	-	-	-	-	-	RNP 1
020	CF	SULKO	-	183°(182.5°)	+0.90	6.0	R	+2000	-210	-	RNP 1
030	TF	UV106	-	273°(272.5°)	+0.90	7.0	R	-4000	-230	-	RNP 1
040	TF	UV114	-	310°(308.7°)	+0.90	14.7	-	-6000	-	-	RNP 1
050	TF	SEDNO	-	310°(308.7°)	+0.90	12.1	-	-7000	-	-	RNP 1

STANDARD DEPARTURE CHART -
INSTRUMENT (SID) - ICAO

ROI ET / Roi Et (VTUV)
RNAV RWY18

ANKID1A BODUR1A DOTUS1A
ENTEK1A RURAR1A SEDNO1A

WAYPOINT LIST

RNAV RWY18	
Waypoint Identifier	Coordinates
DER RWY18	16° 06' 26.14" N 103° 46' 24.15" E
ANKID	15° 40' 48.67" N 103° 30' 57.40" E
BODUR	15° 48' 52.90" N 103° 21' 27.21" E
DOTUS	16° 31' 03.01" N 103° 27' 31.56" E
ENTEK	15° 47' 54.67" N 104° 10' 24.31" E
RURAR	16° 19' 43.04" N 104° 14' 35.65" E
SEDNO	16° 17' 33.31" N 103° 17' 07.18" E
SULKO	16° 00' 24.98" N 103° 46' 08.03" E
UV102	16° 17' 54.63" N 103° 27' 10.81" E
UV106	16° 00' 42.97" N 103° 38' 52.38" E
UV110	16° 00' 06.74" N 103° 53' 23.67" E
UV114	16° 09' 56.42" N 103° 26' 58.24" E
UV115	16° 24' 56.23" N 103° 27' 21.90" E
UV116	16° 12' 46.75" N 104° 07' 04.75" E

INTENTIONALLY BLANK

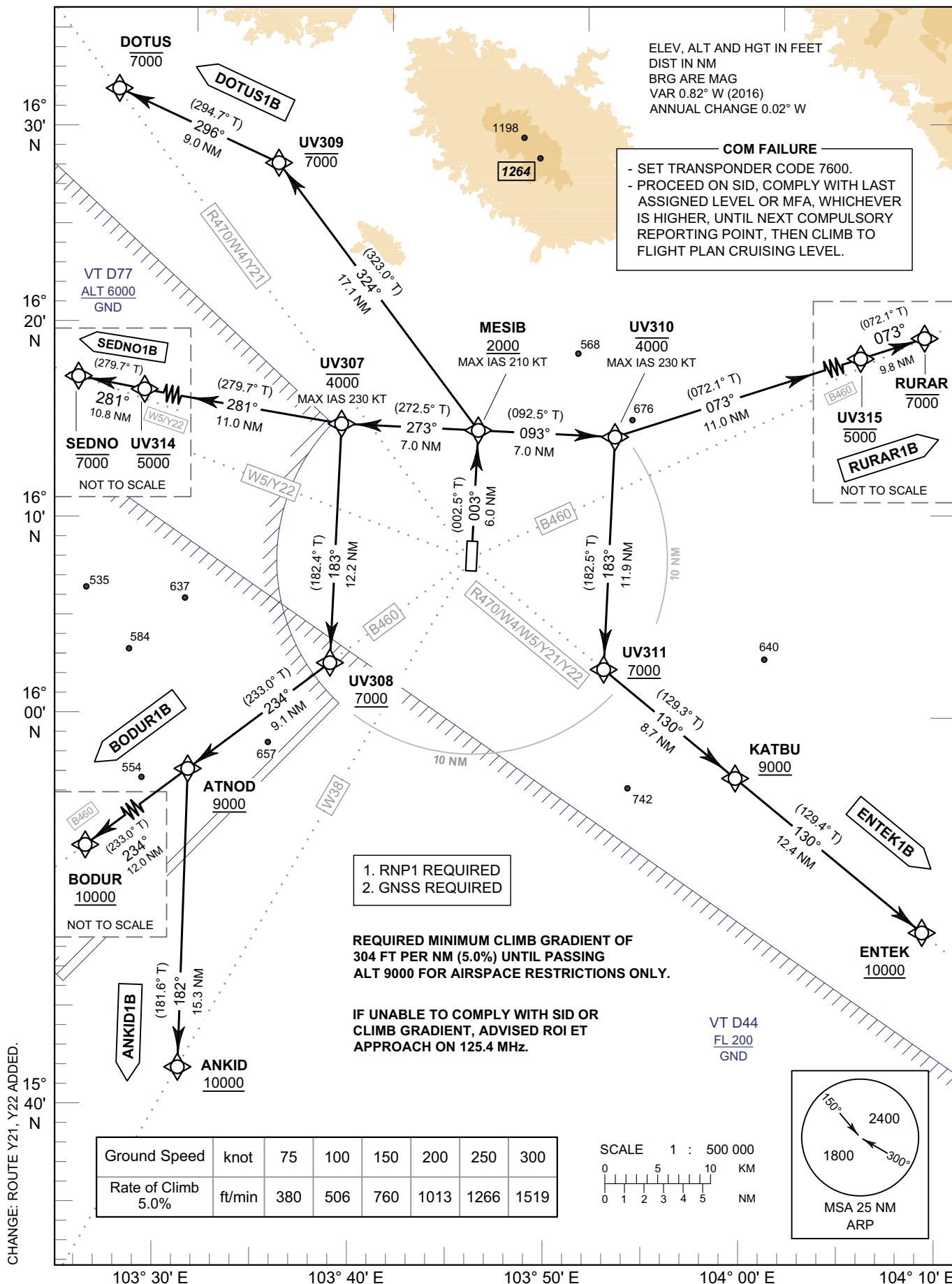
**STANDARD DEPARTURE CHART -
INSTRUMENT (SID) - ICAO**

TRANSITION ALTITUDE
11000 FT

APP : 125.4
TWR : 119.75 , 236.6
ATIS : 128.275

**ROI ET / Roi Et (VTUV)
RNAV RWY36**

ANKID1B BODUR1B DOTUS1B
ENTEK1B RURAR1B SEDNO1B



**STANDARD DEPARTURE CHART -
INSTRUMENT (SID) - ICAO**

**ROI ET / Roi Et (VTUV)
RNAV RWY36**

ANKID1B BODUR1B DOTUS1B
ENTEK1B RURAR1B SEDNO1B

TABULAR DESCRIPTION

RNAV RWY36											
Serial Number	Path Descriptor	Waypoint Identifier	Flyover	Course ° M (° T)	Magnetic Variation	Distance (NM)	Turn Direction	Altitude (FT)	Speed (KT)	VPA/TCH	Navigation Specification
ANKID1B											
010	-	DER RWY36	-	-	+0.90	-	-	-	-	-	RNP 1
020	CF	MESIB	-	003°(002.5°)	+0.90	6.0	L	+2000	-210	-	RNP 1
030	TF	UV307	-	273°(272.5°)	+0.90	7.0	L	-4000	-230	-	RNP 1
040	TF	UV308	-	183°(182.4°)	+0.90	12.2	R	+7000	-	-	RNP 1
050	TF	ATNOD	-	234°(233.0°)	+0.90	9.1	L	+9000	-	-	RNP 1
060	TF	ANKID	-	182°(181.6°)	+0.90	15.3	-	+10000	-	-	RNP 1
BODUR1B											
010	-	DER RWY36	-	-	+0.90	-	-	-	-	-	RNP 1
020	CF	MESIB	-	003°(002.5°)	+0.90	6.0	L	+2000	-210	-	RNP 1
030	TF	UV307	-	273°(272.5°)	+0.90	7.0	L	-4000	-230	-	RNP 1
040	TF	UV308	-	183°(182.4°)	+0.90	12.2	R	+7000	-	-	RNP 1
050	TF	ATNOD	-	234°(233.0°)	+0.90	9.1	-	+9000	-	-	RNP 1
060	TF	BODUR	-	234°(233.0°)	+0.90	12.0	-	+10000	-	-	RNP 1
DOTUS1B											
010	-	DER RWY36	-	-	+0.90	-	-	-	-	-	RNP 1
020	CF	MESIB	-	003°(002.5°)	+0.90	6.0	L	+2000	-210	-	RNP 1
030	TF	UV309	-	324°(323.0°)	+0.90	17.1	L	-7000	-	-	RNP 1
040	TF	DOTUS	-	296°(294.7°)	+0.90	9.0	-	-7000	-	-	RNP 1
ENTEK1B											
010	-	DER RWY36	-	-	+0.90	-	-	-	-	-	RNP 1
020	CF	MESIB	-	003°(002.5°)	+0.90	6.0	R	+2000	-210	-	RNP 1
030	TF	UV310	-	093°(092.5°)	+0.90	7.0	R	-4000	-230	-	RNP 1
040	TF	UV311	-	183°(182.5°)	+0.90	11.9	L	+7000	-	-	RNP 1
050	TF	KATBU	-	130°(129.3°)	+0.90	8.7	-	+9000	-	-	RNP 1
060	TF	ENTEK	-	130°(129.4°)	+0.90	12.4	-	+10000	-	-	RNP 1
RURAR1B											
010	-	DER RWY36	-	-	+0.90	-	-	-	-	-	RNP 1
020	CF	MESIB	-	003°(002.5°)	+0.90	6.0	R	+2000	-210	-	RNP 1
030	TF	UV310	-	093°(092.5°)	+0.90	7.0	L	-4000	-230	-	RNP 1
040	TF	UV315	-	073°(072.1°)	+0.90	11.0	-	-5000	-	-	RNP 1
050	TF	RURAR	-	073°(072.1°)	+0.90	9.8	-	-7000	-	-	RNP 1
SEDNO1B											
010	-	DER RWY36	-	-	+0.90	-	-	-	-	-	RNP 1
020	CF	MESIB	-	003°(002.5°)	+0.90	6.0	L	+2000	-210	-	RNP 1
030	TF	UV307	-	273°(272.5°)	+0.90	7.0	R	-4000	-230	-	RNP 1
040	TF	UV314	-	281°(279.7°)	+0.90	11.0	-	-5000	-	-	RNP 1
050	TF	SEDNO	-	281°(279.7°)	+0.90	10.8	-	-7000	-	-	RNP 1

STANDARD DEPARTURE CHART -
INSTRUMENT (SID) - ICAO

ROI ET / Roi Et (VTUV)
RNAV RWY36

ANKID1B BODUR1B DOTUS1B
ENTEK1B RURAR1B SEDNO1B

WAYPOINT LIST

RNAV RWY36	
Waypoint Identifier	Coordinates
DER RWY36	16° 07' 34.53" N 103° 46' 27.20" E
ANKID	15° 40' 48.67" N 103° 30' 57.40" E
ATNOD	15° 56' 08.67" N 103° 31' 24.04" E
BODUR	15° 48' 52.90" N 103° 21' 27.21" E
DOTUS	16° 31' 03.01" N 103° 27' 31.56" E
ENTEK	15° 47' 54.67" N 104° 10' 24.31" E
KATBU	15° 55' 48.14" N 104° 00' 28.29" E
MESIB	16° 13' 35.69" N 103° 46' 43.33" E
RURAR	16° 19' 43.04" N 104° 14' 35.65" E
SEDNO	16° 17' 33.31" N 103° 17' 07.18" E
UV307	16° 13' 53.68" N 103° 39' 27.19" E
UV308	16° 01' 37.11" N 103° 38' 54.77" E
UV309	16° 27' 16.30" N 103° 36' 02.07" E
UV310	16° 13' 17.44" N 103° 53' 59.44" E
UV311	16° 01' 22.10" N 103° 53' 27.08" E
UV314	16° 15' 44.87" N 103° 28' 10.71" E
UV315	16° 16' 41.36" N 104° 04' 52.21" E

INTENTIONALLY BLANK

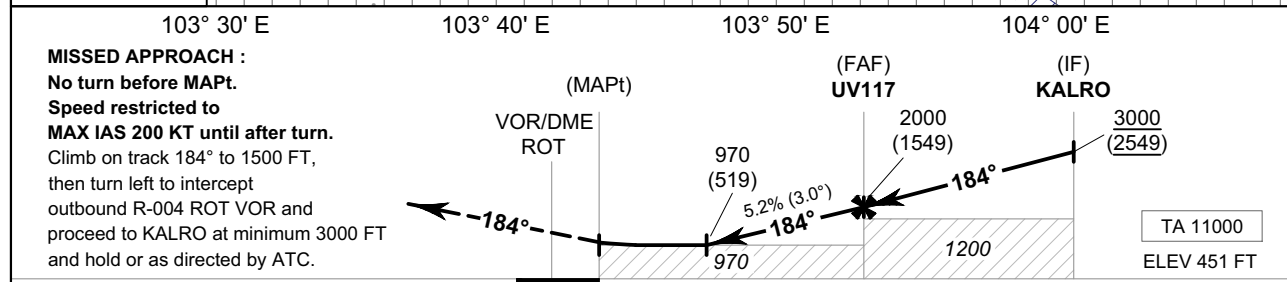
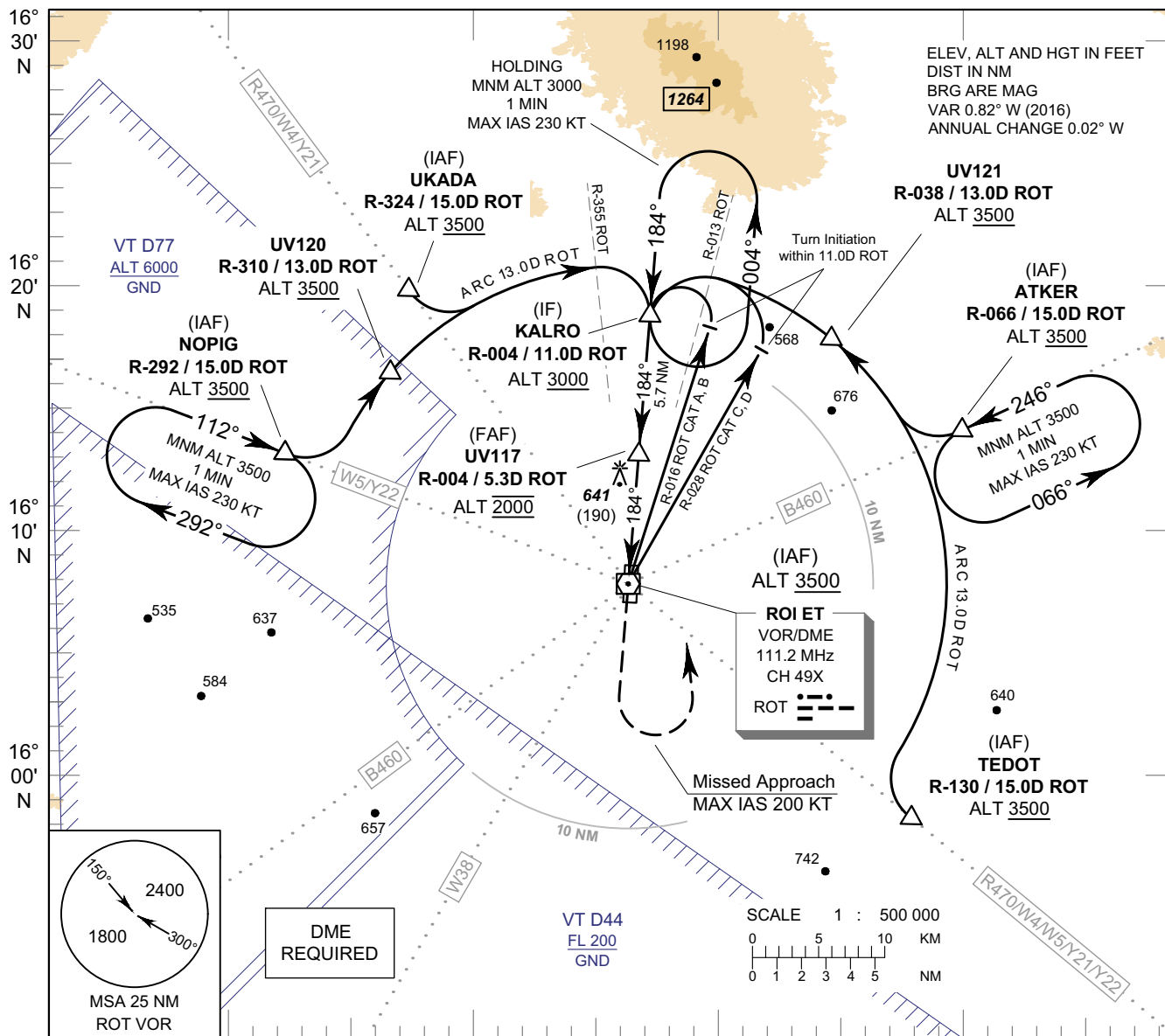
**INSTRUMENT
APPROACH
CHART - ICAO**

**AERODROME ELEV 451 FT
HEIGHTS RELATED TO
AERODROME ELEV**

APP : 125.4
TWR : 119.75 , 236.6
ATIS : 128.275

ROI ET / Roi Et (VTUV)

VOR RWY18



DME FM VOR/DME	0	0.6	2.1	5.3	11.0
NM FM THR	0	1.5	4.7	10.4	

OCA/H	A	B	C	D	Distance (ROT)	2.1D	3D	4D	5D	FAF			
Straight - in Approach	970 (519)				Altitude (Height)	970 (519)	1260 (809)	1575 (1124)	1890 (1439)	2000 (1549)			
					Ground Speed	knot	70	90	100	120	140	160	
Circling (OCH AAL)	1200 (749)				Rate of Descent	5.2%	ft/min	369	474	527	632	737	843

CHANGE: ROUTE Y21, Y22 ADDED.

**INSTRUMENT
APPROACH
CHART - ICAO**

**AERODROME ELEV 451 FT
HEIGHTS RELATED TO
AERODROME ELEV**

ROI ET / Roi Et (VTUV)

VOR RWY18

FIX/POINT		COORDINATES	
(IAF) VOR	ROT	16° 07' 00.59" N	103° 46' 19.45" E
(IAF) UKADA	R-324 / 15.0D ROT	16° 19' 02.02" N	103° 36' 56.08" E
UV120	R-310 / 13.0D ROT	16° 15' 14.73" N	103° 35' 50.59" E
(IAF) NOPIG	R-292 / 15.0D ROT	16° 12' 17.45" N	103° 31' 43.71" E
(IAF) TEDOT	R-130 / 15.0D ROT	15° 57' 27.97" N	103° 58' 22.45" E
(IAF) ATKER	R-066 / 15.0D ROT	16° 13' 22.29" N	104° 00' 27.10" E
UV121	R-038 / 13.0D ROT	16° 17' 24.80" N	103° 54' 29.08" E
(IF) KALRO	R-004 / 11.0D ROT	16° 18' 02.16" N	103° 47' 00.15" E
(FAF) UV117	R-004 / 5.3D ROT	16° 12' 17.48" N	103° 46' 38.93" E
(MAPt)	R-004 / 0.6D ROT	16° 07' 34.81" N	103° 46' 21.55" E

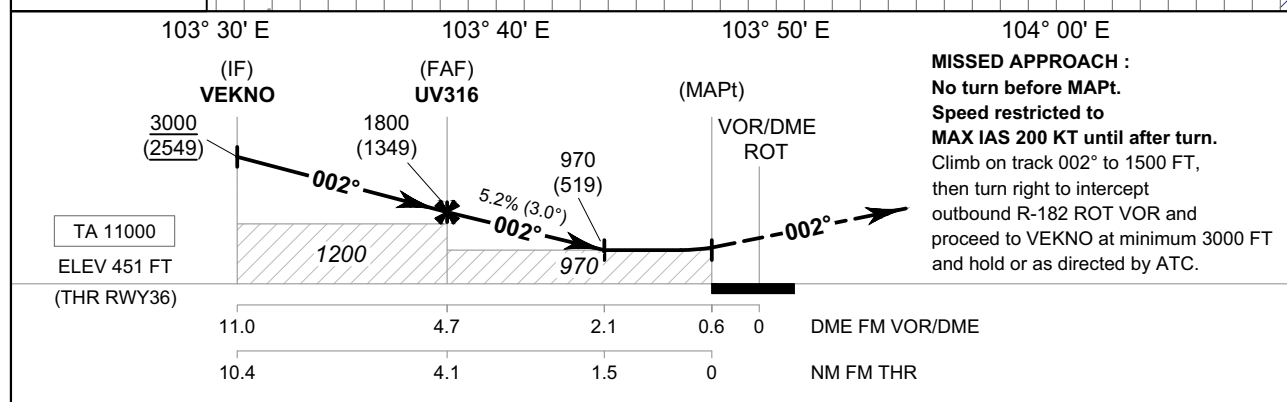
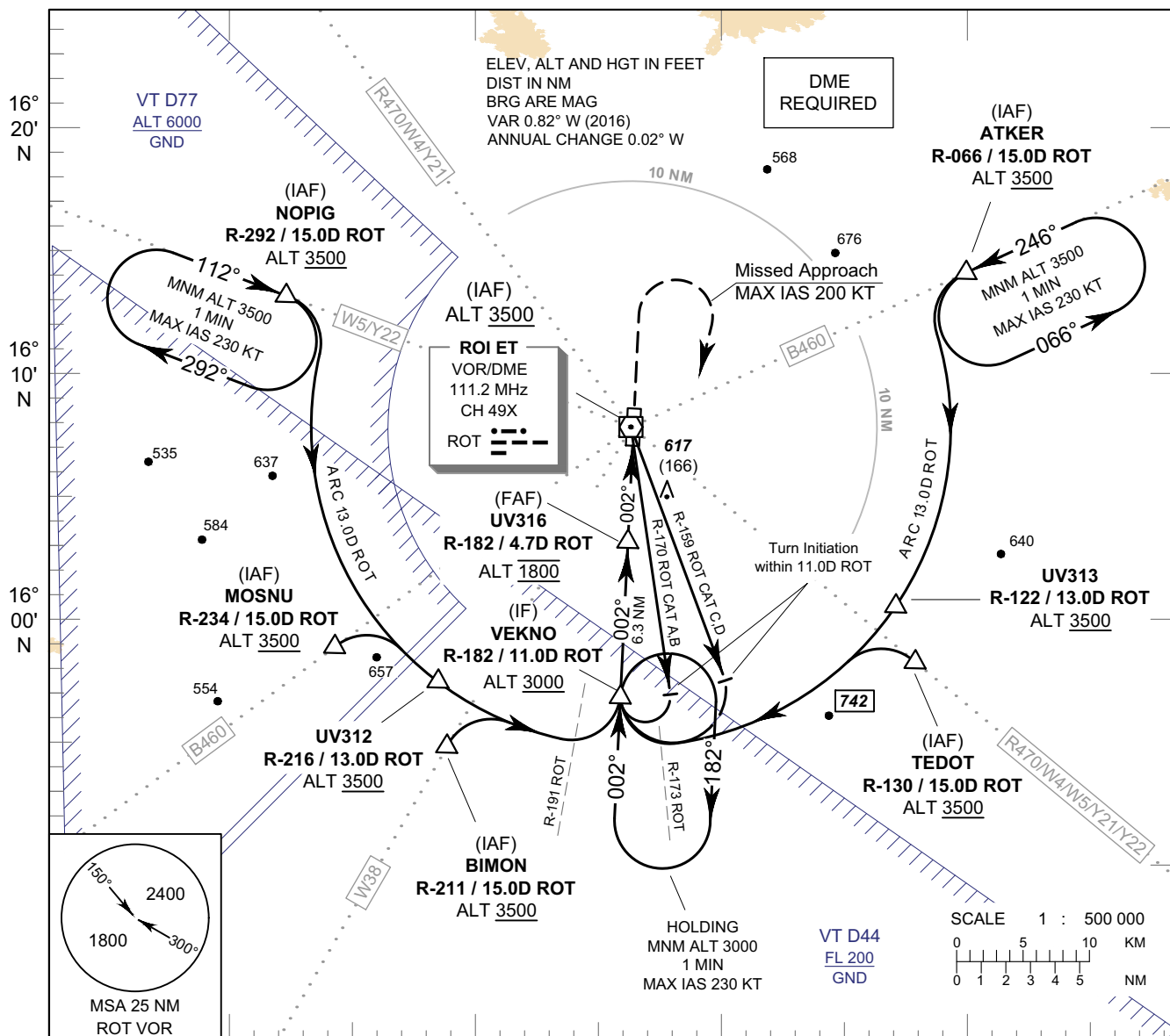
**INSTRUMENT
APPROACH
CHART - ICAO**

**AERODROME ELEV 451 FT
HEIGHTS RELATED TO
AERODROME ELEV**

APP : 125.4
TWR : 119.75 , 236.6
ATIS : 128.275

ROI ET / Roi Et (VTUV)

VOR RWY36



CHANGE: ROUTE Y21, Y22 ADDED.

OCA/H	A	B	C	D	Distance (ROT)	FAF	4D	3D	2.1D				
Straight - in Approach	970 (519)				Altitude (Height)	1800 (1349)	1575 (1124)	1260 (809)	970 (519)				
					Ground Speed	knot	70	90	100	120	140	160	
Circling (OCH AAL)	1200 (749)				Rate of Descent	5.2%	ft/min	369	474	527	632	737	843

**INSTRUMENT
APPROACH
CHART - ICAO**

**AERODROME ELEV 451 FT
HEIGHTS RELATED TO
AERODROME ELEV**

ROI ET / Roi Et (VTUV)

VOR RWY36

FIX/POINT		COORDINATES	
(IAF) VOR	ROT	16° 07' 00.59" N	103° 46' 19.45" E
(IAF) NOPIG	R-292 / 15.0D ROT	16° 12' 17.45" N	103° 31' 43.71" E
(IAF) MOSNU	R-234 / 15.0D ROT	15° 57' 57.11" N	103° 33' 52.77" E
UV312	R-216 / 13.0D ROT	15° 56' 19.95" N	103° 38' 33.51" E
(IAF) BIMON	R-211 / 15.0D ROT	15° 53' 54.78" N	103° 38' 37.93" E
(IAF) ATKER	R-066 / 15.0D ROT	16° 13' 22.29" N	104° 00' 27.10" E
UV313	R-122 / 13.0D ROT	16° 00' 15.24" N	103° 57' 52.55" E
(IAF) TEDOT	R-130 / 15.0D ROT	15° 57' 27.97" N	103° 58' 22.45" E
(IF) VEKNO	R-182 / 11.0D ROT	15° 55' 57.94" N	103° 46' 07.50" E
(FAF) UV316	R-182 / 4.7D ROT	16° 02' 19.31" N	103° 46' 14.37" E
(MAPt)	R-182 / 0.6D ROT	16° 06' 26.30" N	103° 46' 18.83" E

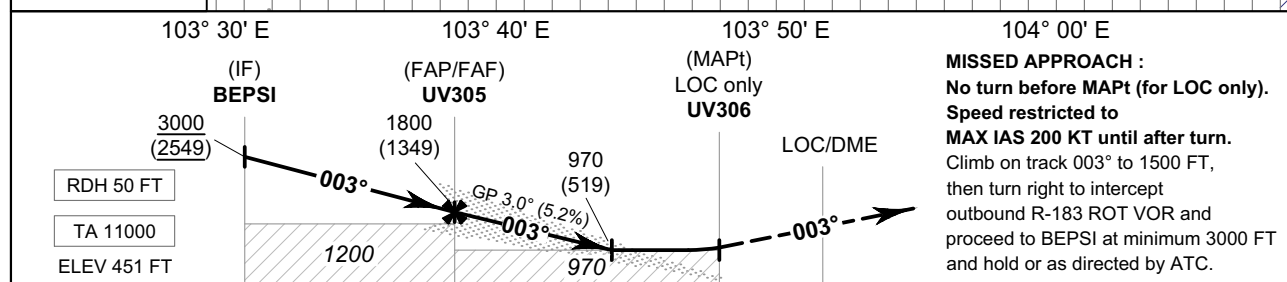
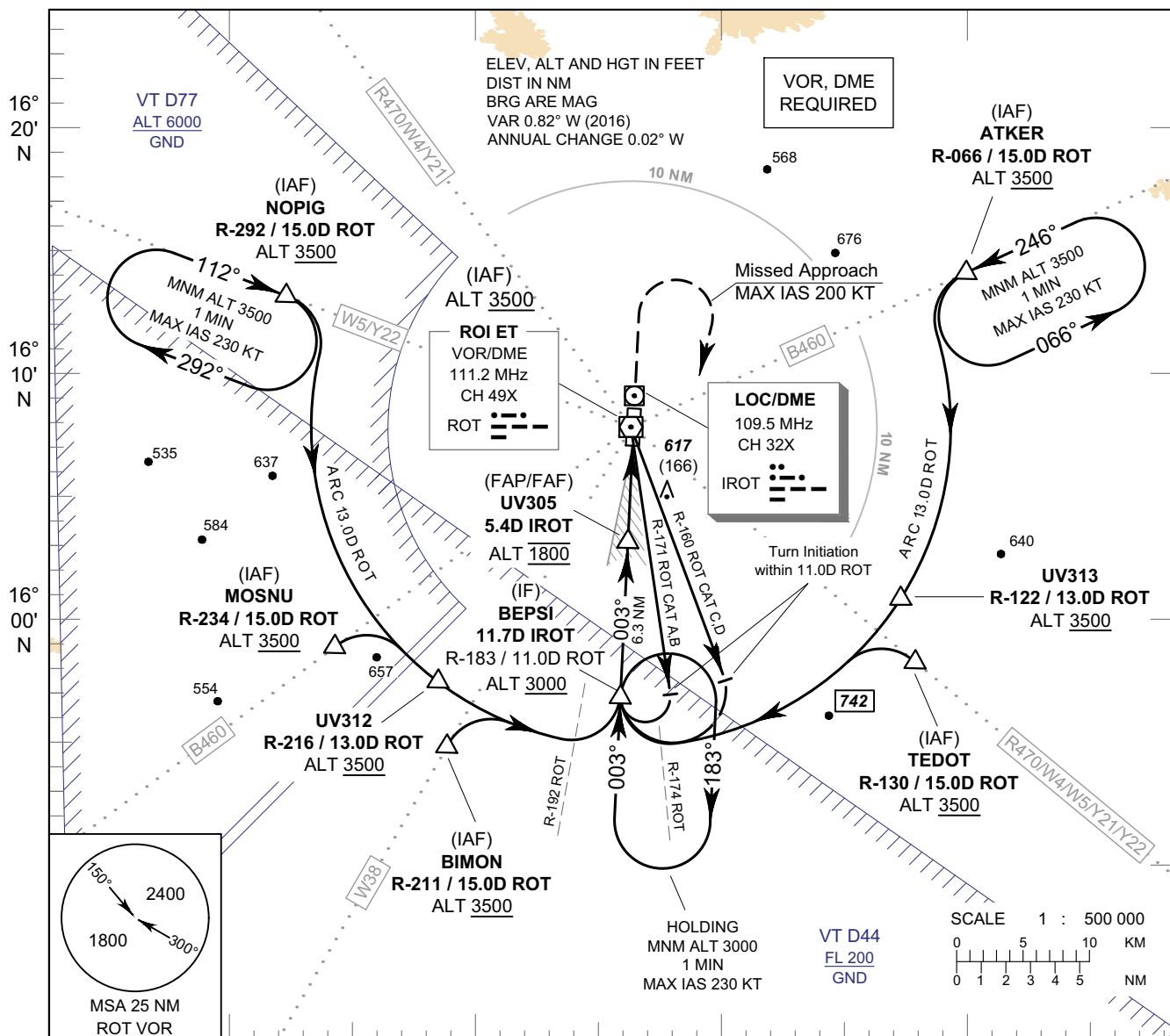
**INSTRUMENT
APPROACH
CHART - ICAO**

**AERODROME ELEV 451 FT
HEIGHTS RELATED TO
THR RWY36 - ELEV 451 FT**

APP : 125.4
TWR : 119.75 , 236.6
ATIS : 128.275

ROI ET / Roi Et (VTUV)

ILS or LOC y RWY36



CHANGE: ROUTE Y21, Y22 ADDED.

OCA/H		A	B	C	D	GS OUT	Distance (IROT)	FAF	5D	4D	3D	2.8D		
Straight - in Approach	CAT I	660 (209)						Altitude (Height)	1800 (1349)	1670 (1219)	1355 (904)	1040 (589)	970 (519)	
		LOC only		970 (519)			Ground Speed	knot	70	90	100	120	140	160
Circling (OCH AAL)		1200 (749)				Rate of Descent	5.2%	ft/min	369	474	527	632	737	843

**INSTRUMENT
APPROACH
CHART - ICAO**

**AERODROME ELEV 451 FT
HEIGHTS RELATED TO
THR RWY36 - ELEV 451 FT**

ROI ET / Roi Et (VTUV)

ILS or LOC y RWY36

FIX/POINT		COORDINATES	
(IAF) VOR	ROT	16° 07' 00.59" N	103° 46' 19.45" E
(IAF) NOPIG	R-292 / 15.0D ROT	16° 12' 17.45" N	103° 31' 43.71" E
(IAF) MOSNU	R-234 / 15.0D ROT	15° 57' 57.11" N	103° 33' 52.77" E
UV312	R-216 / 13.0D ROT	15° 56' 19.95" N	103° 38' 33.51" E
(IAF) BIMON	R-211 / 15.0D ROT	15° 53' 54.78" N	103° 38' 37.93" E
(IAF) ATKER	R-066 / 15.0D ROT	16° 13' 22.29" N	104° 00' 27.10" E
UV313	R-122 / 13.0D ROT	16° 00' 15.24" N	103° 57' 52.55" E
(IAF) TEDOT	R-130 / 15.0D ROT	15° 57' 27.97" N	103° 58' 22.45" E
(IF) BEPSI	11.7D IROT	15° 55' 58.22" N	103° 45' 56.13" E
(FAP/FAF) UV305	5.4D IROT	16° 02' 19.35" N	103° 46' 13.13" E
MAPt (LOC only) THR RWY36	1.3D IROT	16° 06' 26.14" N	103° 46' 24.15" E
GP		16° 06' 35.76" N	103° 46' 20.54" E
LOC/DME	IROT	16° 07' 44.28" N	103° 46' 27.64" E

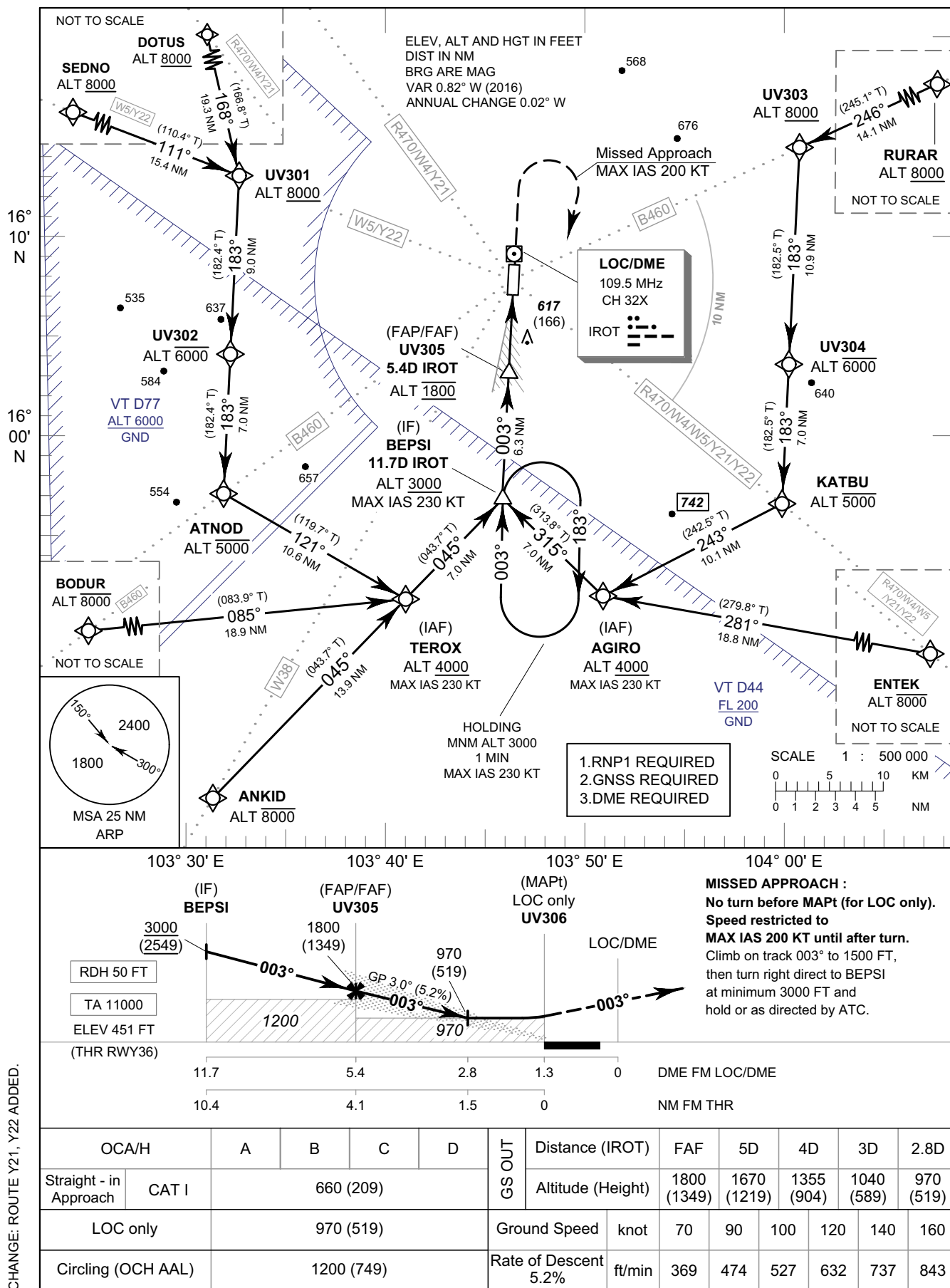
**INSTRUMENT
APPROACH
CHART - ICAO**

AERODROME ELEV 451 FT
HEIGHTS RELATED TO
THR RWY36 - ELEV 451 FT

APP : 125.4
TWR : 119.75 , 236.6
ATIS : 128.275

ROI ET / Roi Et (VTUV)

ILS or LOC z RWY36



**INSTRUMENT
APPROACH
CHART - ICAO**

**AERODROME ELEV 451 FT
HEIGHTS RELATED TO
THR RWY36 - ELEV 451 FT**

ROI ET / Roi Et (VTUV)

ILS or LOC z RWY36

TABULAR DESCRIPTION

ILS or LOC z RWY36											
Serial Number	Path Descriptor	Waypoint Identifier	Flyover	Course ° M (° T)	Magnetic Variation	Distance (NM)	Turn Direction	Altitude (FT)	Speed (KT)	VPA/RDH	Navigation Specification
010	IF	ANKID	-	-	+0.90	-	-	-8000	-	-	RNP 1
020	TF	(IAF) TEROX	-	045°(043.7°)	+0.90	13.9	-	+4000	-230	-	RNP 1
030	TF	(IF) BEPSI	-	045°(043.7°)	+0.90	7.0	-	+3000	-230	-	RNP 1
010	IF	BODUR	-	-	+0.90	-	-	-8000	-	-	RNP 1
020	TF	(IAF) TEROX	-	085°(083.9°)	+0.90	18.9	L	+4000	-230	-	RNP 1
030	TF	(IF) BEPSI	-	045°(043.7°)	+0.90	7.0	-	+3000	-230	-	RNP 1
010	IF	SEDNO	-	-	+0.90	-	-	+8000	-	-	RNP 1
020	TF	UV301	-	111°(110.4°)	+0.90	15.4	R	+8000	-	-	RNP 1
030	TF	UV302	-	183°(182.4°)	+0.90	9.0	-	-6000	-	-	RNP 1
040	TF	ATNOD	-	183°(182.4°)	+0.90	7.0	L	-5000	-	-	RNP 1
050	TF	(IAF) TEROX	-	121°(119.7°)	+0.90	10.6	L	+4000	-230	-	RNP 1
060	TF	(IF) BEPSI	-	045°(043.7°)	+0.90	7.0	-	+3000	-230	-	RNP 1
010	IF	DOTUS	-	-	+0.90	-	-	+8000	-	-	RNP 1
020	TF	UV301	-	168°(166.8°)	+0.90	19.3	R	+8000	-	-	RNP 1
030	TF	UV302	-	183°(182.4°)	+0.90	9.0	-	-6000	-	-	RNP 1
040	TF	ATNOD	-	183°(182.4°)	+0.90	7.0	L	-5000	-	-	RNP 1
050	TF	(IAF) TEROX	-	121°(119.7°)	+0.90	10.6	L	+4000	-230	-	RNP 1
060	TF	(IF) BEPSI	-	045°(043.7°)	+0.90	7.0	-	+3000	-230	-	RNP 1
010	IF	ENTEK	-	-	+0.90	-	-	-8000	-	-	RNP 1
020	TF	(IAF) AGIRO	-	281°(279.8°)	+0.90	18.8	R	+4000	-230	-	RNP 1
030	TF	(IF) BEPSI	-	315°(313.8°)	+0.90	7.0	-	+3000	-230	-	RNP 1
010	IF	RURAR	-	-	+0.90	-	-	+8000	-	-	RNP 1
020	TF	UV303	-	246°(245.1°)	+0.90	14.1	L	+8000	-	-	RNP 1
030	TF	UV304	-	183°(182.5°)	+0.90	10.9	-	-6000	-	-	RNP 1
040	TF	KATBU	-	183°(182.5°)	+0.90	7.0	R	-5000	-	-	RNP 1
050	TF	(IAF) AGIRO	-	243°(242.5°)	+0.90	10.1	R	+4000	-230	-	RNP 1
060	TF	(IF) BEPSI	-	315°(313.8°)	+0.90	7.0	-	+3000	-230	-	RNP 1
010	IF	(IF) BEPSI	-	-	+0.90	-	-	+3000	-230	-	RNP 1
TRANSITION TO ILS or LOC											
020	TF	(FAP/FAF) UV305	-	003°(002.5°)	+0.90	6.3	-	@1800	-	-	ILS
030	TF	(MAPt@THR36) UV306	Y	003°(002.5°)	+0.90	4.1	-	@501	-	-3.0/50	ILS
040	CA	-	-	003°(002.5°)	+0.90	-	-	+1500	-200	-	RNP 1
050	DF	(IF) BEPSI	-	-	+0.90	-	R	+3000	-200	-	RNP 1
060	HM	(IF) BEPSI	Y	003°(002.5°)	+0.90	1 minute	R	+3000	-230	-	RNP 1

**INSTRUMENT
APPROACH
CHART - ICAO**

**AERODROME ELEV 451 FT
HEIGHTS RELATED TO
THR RWY36 - ELEV 451 FT**

ROI ET / Roi Et (VTUV)

ILS or LOC z RWY36

FIX/POINT		COORDINATES	
(IF) BEPSI	11.7D IROT	15° 55' 58.22" N	103° 45' 56.13" E
(FAP/FAF) UV305	5.4D IROT	16° 02' 19.35" N	103° 46' 13.13" E
MAPt (LOC only) THR RWY36	1.3D IROT	16° 06' 26.14" N	103° 46' 24.15" E
GP		16° 06' 35.76" N	103° 46' 20.54" E
LOC/DME	IROT	16° 07' 44.28" N	103° 46' 27.64" E

**INSTRUMENT
APPROACH
CHART - ICAO**

**AERODROME ELEV 451 FT
HEIGHTS RELATED TO
THR RWY36 - ELEV 451 FT**

ROI ET / Roi Et (VTUV)

ILS or LOC z RWY36

WAYPOINT LIST

ILS or LOC z RWY36	
Waypoint Identifier	Coordinates
AGIRO	15° 51' 06.48" N 103° 51' 10.85" E
ANKID	15° 40' 48.67" N 103° 30' 57.40" E
ATNOD	15° 56' 08.67" N 103° 31' 24.04" E
BEPSI	15° 55' 58.22" N 103° 45' 56.13" E
BODUR	15° 48' 52.90" N 103° 21' 27.21" E
DOTUS	16° 31' 03.01" N 103° 27' 31.56" E
ENTEK	15° 47' 54.67" N 104° 10' 24.31" E
KATBU	15° 55' 48.14" N 104° 00' 28.29" E
RURAR	16° 19' 43.04" N 104° 14' 35.65" E
SEDNO	16° 17' 33.31" N 103° 17' 07.18" E
TEROX	15° 50' 53.58" N 103° 40' 54.75" E
UV301	16° 12' 09.50" N 103° 32' 05.74" E
UV302	16° 03' 10.05" N 103° 31' 42.32" E
UV303	16° 13' 45.01" N 104° 01' 17.65" E
UV304	16° 02' 49.48" N 104° 00' 47.58" E
UV305	16° 02' 19.35" N 103° 46' 13.13" E
UV306	16° 06' 26.14" N 103° 46' 24.15" E

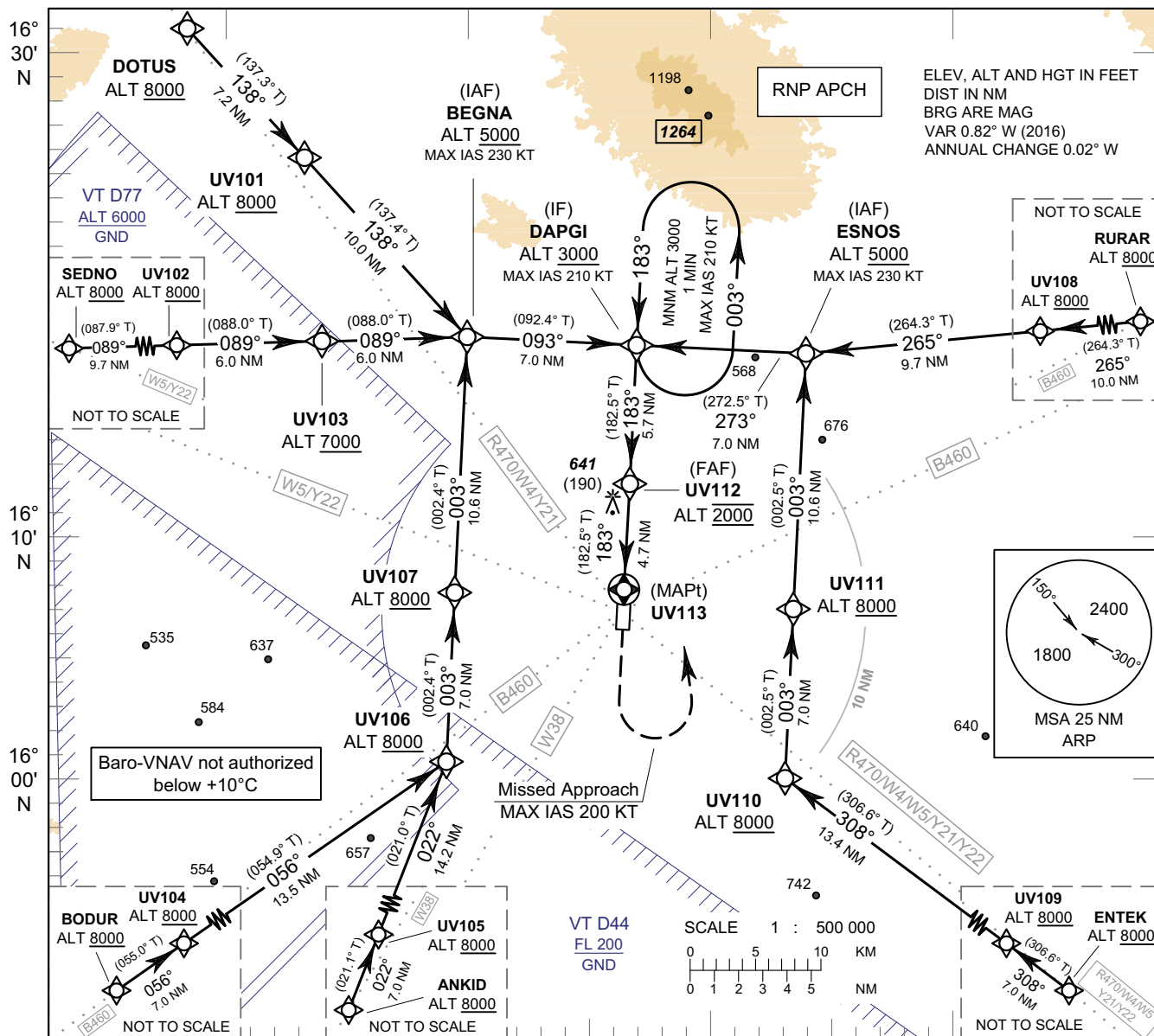
**INSTRUMENT
APPROACH
CHART - ICAO**

**AERODROME ELEV 451 FT
HEIGHTS RELATED TO
THR RWY18 - ELEV 451 FT**

APP : 125.4
TWR : 119.75 , 236.6
ATIS : 128.275

ROI ET / Roi Et (VTUV)

RNP RWY18



MISSED APPROACH :
No turn before MAPt.
Speed restricted to MAX IAS 200 KT until after turn.
Climb on track 183° to 1500 FT, then turn left direct to DAPGI at minimum 3000 FT and hold or as directed by ATC.

(MAPt) LNAV only UV113 (FAF) UV112 (IF) DAPGI

RDH 50 FT
TA 11000
ELEV 451 FT (THR RWY18)

OCA/H	A	B	C	D	NM to NEXT WPT	1.5 NM	2 NM	3 NM	4 NM	FAF
LNAV/VNAV		750 (299)			Altitude (Height)	970 (519)	1135 (684)	1450 (999)	1765 (1314)	2000 (1549)
LNAV		970 (519)			Ground Speed	knot 70	90	100	120	140
Circling (OCH AAL)		1200 (749)			Rate of Descent FAF-MAPt 5.2%	ft/min 369	474	527	632	737

CHANGE: ROUTE Y21, Y22 ADDED.

**INSTRUMENT
APPROACH
CHART - ICAO**

**AERODROME ELEV 451 FT
HEIGHTS RELATED TO
THR RWY18 - ELEV 451 FT**

ROI ET / Roi Et (VTUV)

RNP RWY18

TABULAR DESCRIPTION (1)

RNP RWY18											
Serial Number	Path Descriptor	Waypoint Identifier	Flyover	Course ° M (° T)	Magnetic Variation	Distance (NM)	Turn Direction	Altitude (FT)	Speed (KT)	VPA/ TCH	Navigation Specification
010	IF	DOTUS	-	-	+0.90	-	-	+8000	-	-	RNP APCH
020	TF	UV101	-	138°(137.3°)	+0.90	7.2	-	+8000	-	-	RNP APCH
030	TF	(IAF) BEGNA	-	138°(137.4°)	+0.90	10.0	L	+5000	-230	-	RNP APCH
040	TF	(IF) DAPGI	-	093°(092.4°)	+0.90	7.0	-	+3000	-210	-	RNP APCH
010	IF	SEDNO	-	-	+0.90	-	-	+8000	-	-	RNP APCH
020	TF	UV102	-	089°(087.9°)	+0.90	9.7	-	+8000	-	-	RNP APCH
030	TF	UV103	-	089°(088.0°)	+0.90	6.0	-	+7000	-	-	RNP APCH
040	TF	(IAF) BEGNA	-	089°(088.0°)	+0.90	6.0	R	+5000	-230	-	RNP APCH
050	TF	(IF) DAPGI	-	093°(092.4°)	+0.90	7.0	-	+3000	-210	-	RNP APCH
010	IF	BODUR	-	-	+0.90	-	-	+8000	-	-	RNP APCH
020	TF	UV104	-	056°(055.0°)	+0.90	7.0	-	+8000	-	-	RNP APCH
030	TF	UV106	-	056°(054.9°)	+0.90	13.5	L	+8000	-	-	RNP APCH
040	TF	UV107	-	003°(002.4°)	+0.90	7.0	-	+8000	-	-	RNP APCH
050	TF	(IAF) BEGNA	-	003°(002.4°)	+0.90	10.6	R	+5000	-230	-	RNP APCH
060	TF	(IF) DAPGI	-	093°(092.4°)	+0.90	7.0	-	+3000	-210	-	RNP APCH
010	IF	ANKID	-	-	+0.90	-	-	+8000	-	-	RNP APCH
020	TF	UV105	-	022°(021.1°)	+0.90	7.0	-	+8000	-	-	RNP APCH
030	TF	UV106	-	022°(021.0°)	+0.90	14.2	L	+8000	-	-	RNP APCH
040	TF	UV107	-	003°(002.4°)	+0.90	7.0	-	+8000	-	-	RNP APCH
050	TF	(IAF) BEGNA	-	003°(002.4°)	+0.90	10.6	R	+5000	-230	-	RNP APCH
060	TF	(IF) DAPGI	-	093°(092.4°)	+0.90	7.0	-	+3000	-210	-	RNP APCH
010	IF	ENTEK	-	-	+0.90	-	-	+8000	-	-	RNP APCH
020	TF	UV109	-	308°(306.6°)	+0.90	7.0	-	+8000	-	-	RNP APCH
030	TF	UV110	-	308°(306.6°)	+0.90	13.4	R	+8000	-	-	RNP APCH
040	TF	UV111	-	003°(002.5°)	+0.90	7.0	-	+8000	-	-	RNP APCH
050	TF	(IAF) ESNOS	-	003°(002.5°)	+0.90	10.6	L	+5000	-230	-	RNP APCH
060	TF	(IF) DAPGI	-	273°(272.5°)	+0.90	7.0	-	+3000	-210	-	RNP APCH

CHANGE: CHART TITLE:

**INSTRUMENT
APPROACH
CHART - ICAO**

**AERODROME ELEV 451 FT
HEIGHTS RELATED TO
THR RWY18 - ELEV 451 FT**

ROI ET / Roi Et (VTUV)

RNP RWY18

TABULAR DESCRIPTION (2)

RNP RWY18											
Serial Number	Path Descriptor	Waypoint Identifier	Flyover	Course ° M (° T)	Magnetic Variation	Distance (NM)	Turn Direction	Altitude (FT)	Speed (KT)	VPA/TCH	Navigation Specification
010	IF	RURAR	-	-	+0.90	-	-	+8000	-	-	RNP APCH
020	TF	UV108	-	265°(264.3°)	+0.90	10.0	-	+8000	-	-	RNP APCH
030	TF	(IAF) ESNOS	-	265°(264.3°)	+0.90	9.7	R	+5000	-230	-	RNP APCH
040	TF	(IF) DAPGI	-	273°(272.5°)	+0.90	7.0	-	+3000	-210	-	RNP APCH
010	IF	(IF) DAPGI	-	-	+0.90	-	-	+3000	-210	-	RNP APCH
020	TF	(FAF) UV112	-	183°(182.5°)	+0.90	5.7	-	@2000	-	-	RNP APCH
030	TF	(MAPt@THR18) UV113	Y	183°(182.5°)	+0.90	4.7	-	@501	-	-3.0/50	RNP APCH
040	CA	-	-	183°(182.5°)	+0.90	-	-	+1500	-200	-	RNP APCH
050	DF	(IF) DAPGI	-	-	+0.90	-	L	+3000	-200	-	RNP APCH
060	HM	(IF) DAPGI	Y	183°(182.5°)	+0.90	1 minute	L	+3000	-210	-	RNP APCH

WAYPOINT LIST

RNP RWY18					
Waypoint Identifier	Coordinates		Waypoint Identifier	Coordinates	
ANKID	15° 40' 48.67" N	103° 30' 57.40" E	UV103	16° 18' 07.60" N	103° 33' 24.87" E
BEGNA	16° 18' 20.39" N	103° 39' 38.95" E	UV104	15° 52' 54.95" N	103° 27' 24.01" E
BODUR	15° 48' 52.90" N	103° 21' 27.21" E	UV105	15° 47' 22.23" N	103° 33' 33.97" E
DAPGI	16° 18' 02.38" N	103° 46' 55.25" E	UV106	16° 00' 42.97" N	103° 38' 52.38" E
DOTUS	16° 31' 03.01" N	103° 27' 31.56" E	UV107	16° 07' 44.34" N	103° 39' 10.92" E
ENTEK	15° 47' 54.67" N	104° 10' 24.31" E	UV108	16° 18' 42.99" N	104° 04' 14.85" E
ESNOS	16° 17' 44.13" N	103° 54' 11.52" E	UV109	15° 52' 06.05" N	104° 04' 34.48" E
RURAR	16° 19' 43.04" N	104° 14' 35.65" E	UV110	16° 00' 06.74" N	103° 53' 23.67" E
SEDNO	16° 17' 33.31" N	103° 17' 07.18" E	UV111	16° 07' 08.09" N	103° 53' 42.72" E
UV101	16° 25' 43.72" N	103° 32' 36.37" E	UV112	16° 12' 17.45" N	103° 46' 39.83" E
UV102	16° 17' 54.63" N	103° 27' 10.81" E	UV113	16° 07' 34.53" N	103° 46' 27.20" E

CHANGE: CHART TITLE:

INTENTIONALLY BLANK

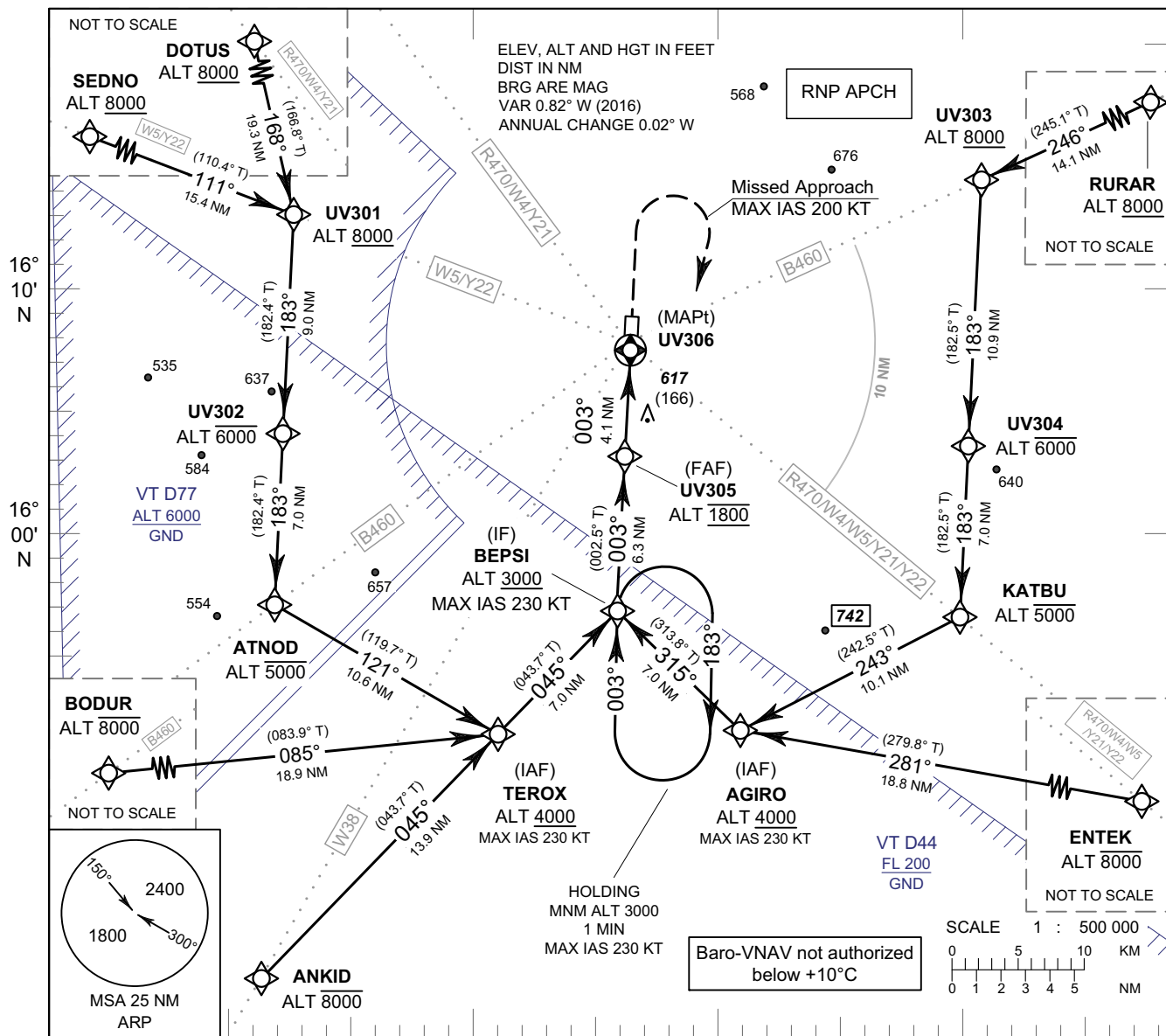
**INSTRUMENT
APPROACH
CHART - ICAO**

**AERODROME ELEV 451 FT
HEIGHTS RELATED TO
THR RWY36 - ELEV 451 FT**

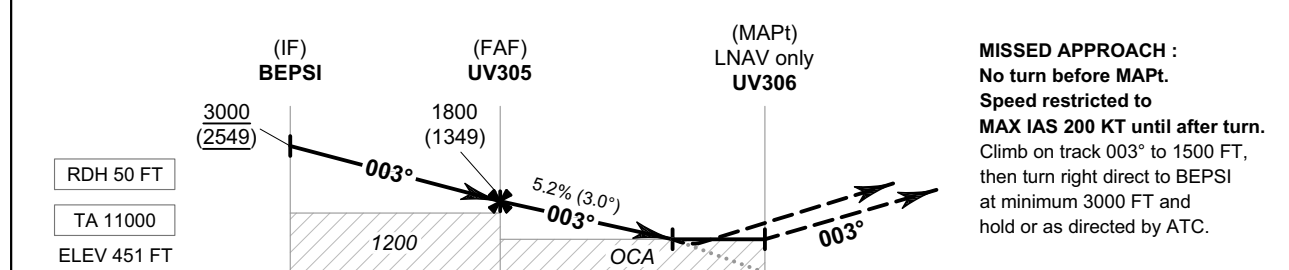
APP : 125.4
TWR : 119.75 , 236.6
ATIS : 128.275

ROI ET / Roi Et (VTUV)

RNP RWY36



103° 30' E 103° 40' E 103° 50' E 104° 00' E



MISSED APPROACH :
No turn before MAPt.
Speed restricted to
MAX IAS 200 KT until after turn.
Climb on track 003° to 1500 FT,
then turn right direct to BEPSI
at minimum 3000 FT and
hold or as directed by ATC.

CHANGE: ROUTE Y21, Y22 ADDED.

OCA/H	A	B	C	D	NM to NEXT WPT	FAF	4 NM	3 NM	2 NM	1.5 NM		
LNAV/VNAV	800 (349)				Altitude (Height)	1800 (1349)	1765 (1314)	1450 (999)	1135 (684)	970 (519)		
LNAV	970 (519)				Ground Speed	knot	70	90	100	120	140	160
Circling (OCH AAL)	1200 (749)				Rate of Descent	ft/min	369	474	527	632	737	843

**INSTRUMENT
APPROACH
CHART - ICAO**

**AERODROME ELEV 451 FT
HEIGHTS RELATED TO
THR RWY36 - ELEV 451 FT**

ROI ET / Roi Et (VTUV)

RNP RWY36

TABULAR DESCRIPTION

RNP RWY36											
Serial Number	Path Descriptor	Waypoint Identifier	Flyover	Course ° M (° T)	Magnetic Variation	Distance (NM)	Turn Direction	Altitude (FT)	Speed (KT)	VPA/TCH	Navigation Specification
010	IF	ANKID	-	-	+0.90	-	-	-8000	-	-	RNP APCH
020	TF	(IAF) TEROX	-	045°(043.7°)	+0.90	13.9	-	+4000	-230	-	RNP APCH
030	TF	(IF) BEPSI	-	045°(043.7°)	+0.90	7.0	-	+3000	-230	-	RNP APCH
010	IF	BODUR	-	-	+0.90	-	-	-8000	-	-	RNP APCH
020	TF	(IAF) TEROX	-	085°(083.9°)	+0.90	18.9	L	+4000	-230	-	RNP APCH
030	TF	(IF) BEPSI	-	045°(043.7°)	+0.90	7.0	-	+3000	-230	-	RNP APCH
010	IF	SEDNO	-	-	+0.90	-	-	+8000	-	-	RNP APCH
020	TF	UV301	-	111°(110.4°)	+0.90	15.4	R	+8000	-	-	RNP APCH
030	TF	UV302	-	183°(182.4°)	+0.90	9.0	-	-6000	-	-	RNP APCH
040	TF	ATNOD	-	183°(182.4°)	+0.90	7.0	L	-5000	-	-	RNP APCH
050	TF	(IAF) TEROX	-	121°(119.7°)	+0.90	10.6	L	+4000	-230	-	RNP APCH
060	TF	(IF) BEPSI	-	045°(043.7°)	+0.90	7.0	-	+3000	-230	-	RNP APCH
010	IF	DOTUS	-	-	+0.90	-	-	+8000	-	-	RNP APCH
020	TF	UV301	-	168°(166.8°)	+0.90	19.3	R	+8000	-	-	RNP APCH
030	TF	UV302	-	183°(182.4°)	+0.90	9.0	-	-6000	-	-	RNP APCH
040	TF	ATNOD	-	183°(182.4°)	+0.90	7.0	L	-5000	-	-	RNP APCH
050	TF	(IAF) TEROX	-	121°(119.7°)	+0.90	10.6	L	+4000	-230	-	RNP APCH
060	TF	(IF) BEPSI	-	045°(043.7°)	+0.90	7.0	-	+3000	-230	-	RNP APCH
010	IF	ENTEK	-	-	+0.90	-	-	-8000	-	-	RNP APCH
020	TF	(IAF) AGIRO	-	281°(279.8°)	+0.90	18.8	R	+4000	-230	-	RNP APCH
030	TF	(IF) BEPSI	-	315°(313.8°)	+0.90	7.0	-	+3000	-230	-	RNP APCH
010	IF	RURAR	-	-	+0.90	-	-	+8000	-	-	RNP APCH
020	TF	UV303	-	246°(245.1°)	+0.90	14.1	L	+8000	-	-	RNP APCH
030	TF	UV304	-	183°(182.5°)	+0.90	10.9	-	-6000	-	-	RNP APCH
040	TF	KATBU	-	183°(182.5°)	+0.90	7.0	R	-5000	-	-	RNP APCH
050	TF	(IAF) AGIRO	-	243°(242.5°)	+0.90	10.1	R	+4000	-230	-	RNP APCH
060	TF	(IF) BEPSI	-	315°(313.8°)	+0.90	7.0	-	+3000	-230	-	RNP APCH
010	IF	BEPSI (IF)	-	-	+0.90	-	-	+3000	-230	-	RNP APCH
020	TF	(FAF) UV305	-	003°(002.5°)	+0.90	6.3	-	@1800	-	-	RNP APCH
030	TF	(MAPt@THR36) UV306	Y	003°(002.5°)	+0.90	4.1	-	@501	-	-3.0/50	RNP APCH
040	CA	-	-	003°(002.5°)	+0.90	-	-	+1500	-200	-	RNP APCH
050	DF	(IF) BEPSI	-	-	+0.90	-	R	+3000	-200	-	RNP APCH
060	HM	(IF) BEPSI	Y	003°(002.5°)	+0.90	1 minute	R	+3000	-230	-	RNP APCH

CHANGE: CHART TITLE.

**INSTRUMENT
APPROACH
CHART - ICAO**

**AERODROME ELEV 451 FT
HEIGHTS RELATED TO
THR RWY36 - ELEV 451 FT**

ROI ET / Roi Et (VTUV)

RNP RWY36

WAYPOINT LIST

RNP RWY36	
Waypoint Identifier	Coordinates
AGIRO	15° 51' 06.48" N 103° 51' 10.85" E
ANKID	15° 40' 48.67" N 103° 30' 57.40" E
ATNOD	15° 56' 08.67" N 103° 31' 24.04" E
BEPSI	15° 55' 58.22" N 103° 45' 56.13" E
BODUR	15° 48' 52.90" N 103° 21' 27.21" E
DOTUS	16° 31' 03.01" N 103° 27' 31.56" E
ENTEK	15° 47' 54.67" N 104° 10' 24.31" E
KATBU	15° 55' 48.14" N 104° 00' 28.29" E
RURAR	16° 19' 43.04" N 104° 14' 35.65" E
SEDNO	16° 17' 33.31" N 103° 17' 07.18" E
TEROX	15° 50' 53.58" N 103° 40' 54.75" E
UV301	16° 12' 09.50" N 103° 32' 05.74" E
UV302	16° 03' 10.05" N 103° 31' 42.32" E
UV303	16° 13' 45.01" N 104° 01' 17.65" E
UV304	16° 02' 49.48" N 104° 00' 47.58" E
UV305	16° 02' 19.35" N 103° 46' 13.13" E
UV306	16° 06' 26.14" N 103° 46' 24.15" E

CHANGE: CHART TITLE:

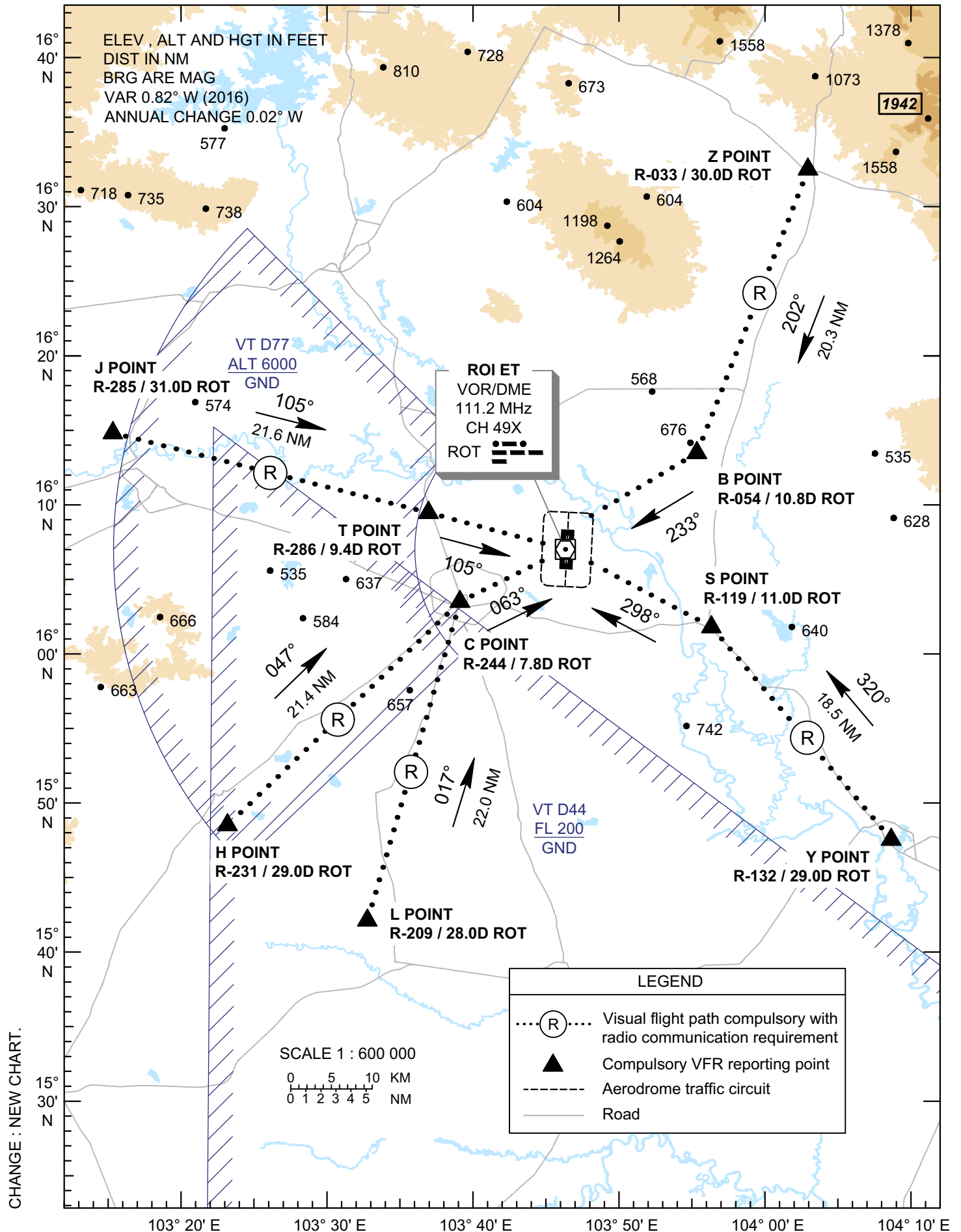
INTENTIONALLY BLANK

**VFR ENTRY
PROCEDURE
CHART**

AERODROME ELEV 451 FT
HEIGHT RELATED TO
AERODROME ELEV

APP : 125.4
TWR : 119.75 , 236.6
ATIS : 128.275

**ROI ET /
Roi Et (VTUV)
RWY 18/36**



**VFR ENTRY
PROCEDURE
CHART**

AERODROME ELEV 451 FT
HEIGHT RELATED TO
AERODROME ELEV

**ROI ET /
Roi Et (VTUV)
RWY 18/36**

ARR-RWY18/36 (From VTUK)

Enter via most direct route through the J POINT , then heading 105° to T POINT , then join aerodrome traffic circuit when direct by ATC.

ARR-RWY18/36 (From VTUQ)

Enter via most direct route through the H POINT , then heading 047° to C POINT , then join aerodrome traffic circuit when direct by ATC.

ARR-RWY18/36 (From VTUO)

Enter via most direct route through the L POINT , then heading 017° to C POINT , then join aerodrome traffic circuit when direct by ATC.

ARR-RWY18/36 (From VTUW)

Enter via most direct route through the Z POINT , then heading 202° to B POINT , then join aerodrome traffic circuit when direct by ATC.

ARR-RWY18/36 (From VTUU)

Enter via most direct route through the Y POINT , then heading 320° to S POINT , then join aerodrome traffic circuit when direct by ATC.

Reporting Points	Visual Reference	Radial / DME	Coordinates	
			Latitude	Longitude
"B" or BRAVO Point	Pho Si Sawang intersection	R-054 / 10.8D ROT	16° 13' 29.60" N	103° 55' 21.37" E
"C" or CHALIE Point	Planchai Swamp	R-244 / 7.8D ROT	16° 03' 28.55" N	103° 39' 04.13" E
"H" or HOTEL Point	Hexagon Pond	R-231 / 29.0D ROT	15° 48' 28.63" N	103° 23' 10.46" E
"J" or JULIET Point	Maharakham University	R-285 / 31.0D ROT	16° 14' 33.17" N	103° 15' 03.57" E
"L" or LIMA Point	Lao Luang Temple	R-209 / 28.0D ROT	15° 42' 06.02" N	103° 32' 48.97" E
"S" or SIERRA Point	Salaloi Lake	R-119 / 11.0D ROT	16° 01' 53.12" N	103° 56' 24.99" E
"T" or TANGO Point	Wat Bueng Sai Thong	R-286 / 9.4D ROT	16° 09' 23.79" N	103° 36' 51.83" E
"Y" or YANKEE Point	Mueang Yasothon	R-132 / 29.0D ROT	15° 47' 45.62" N	104° 08' 52.16" E
"Z" or ZULU Point	Lerng Sew Lake	R-033 / 30.0D ROT	16° 32' 31.41" N	104° 02' 54.65" E
ROI ET VOR/DME (ROT)	ROI ET VOR/DME Station	-	16° 07' 00.59" N	103° 46' 19.45" E

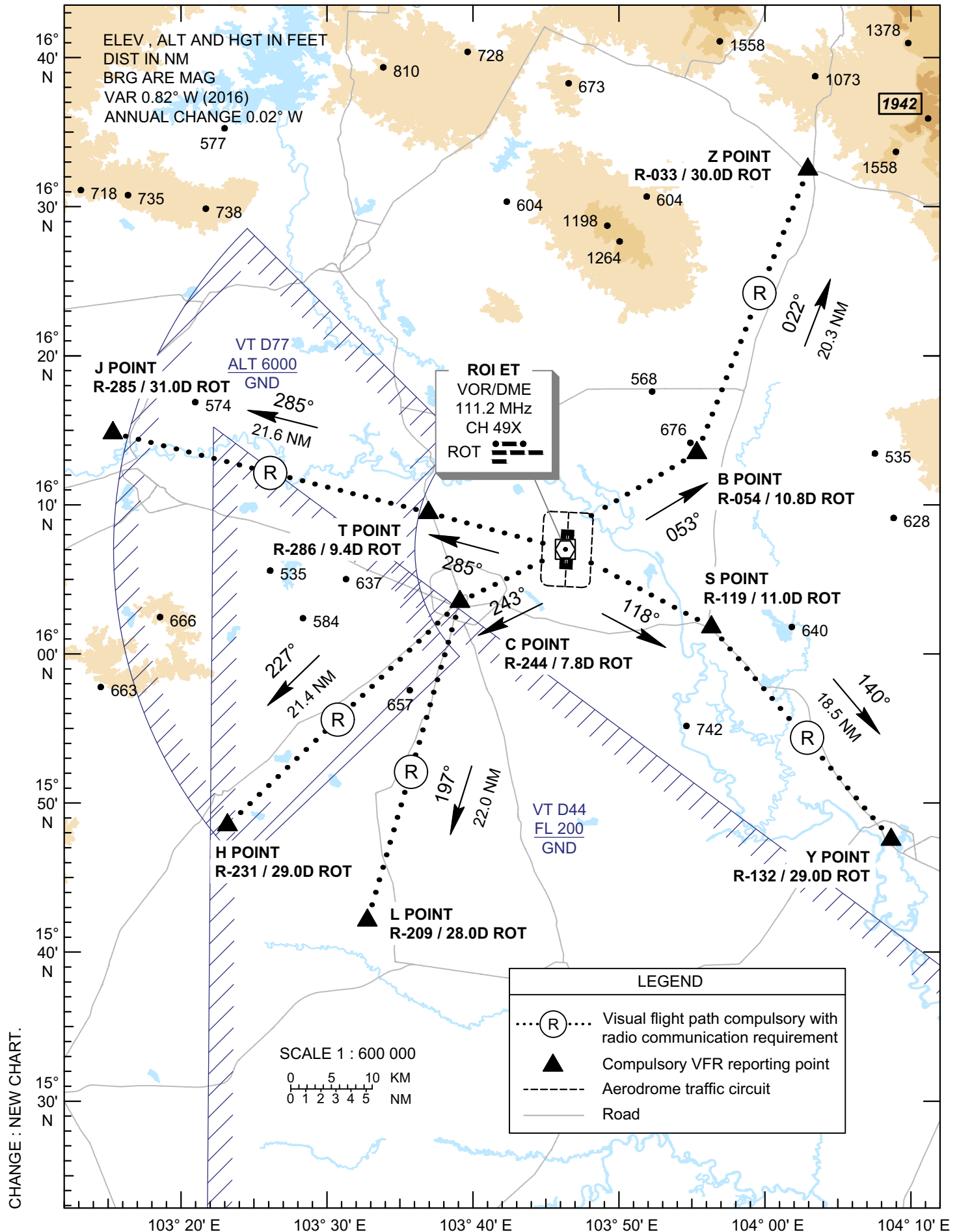
CHANGE : NEW CHART.

**VFR EXIT
PROCEDURE
CHART**

AERODROME ELEV 451 FT
HEIGHT RELATED TO
AERODROME ELEV

APP : 125.4
TWR : 119.75 , 236.6
ATIS : 128.275

**ROI ET /
Roi Et (VTUV)
RWY 18/36**



**VFR EXIT
PROCEDURE
CHART**

AERODROME ELEV 451 FT
HEIGHT RELATED TO
AERODROME ELEV

**ROI ET /
Roi Et (VTUV)
RWY 18/36**

DEP-RWY18/36 (To VTUK)

Outbound to T POINT, then heading 285° to J POINT, then proceed to destination.

DEP-RWY18/36 (To VTUQ)

Outbound to C POINT, then heading 227° to H POINT, then proceed to destination.

DEP-RWY18/36 (To VTUO)

Outbound to C POINT, then heading 197° to L POINT, then proceed to destination.

DEP-RWY18/36 (To VTUW)

Outbound to B POINT, then heading 022° to Z POINT, then proceed to destination.

DEP-RWY18/36 (To VTUU)

Outbound to S POINT, then heading 140° to Y POINT, then proceed to destination.

Reporting Points	Visual Reference	Radial / DME	Coordinates	
			Latitude	Longitude
"B" or BRAVO Point	Pho Si Sawang intersection	R-054 / 10.8D ROT	16° 13' 29.60" N	103° 55' 21.37" E
"C" or CHALIE Point	Planchai Swamp	R-244 / 7.8D ROT	16° 03' 28.55" N	103° 39' 04.13" E
"H" or HOTEL Point	Hexagon Pond	R-231 / 29.0D ROT	15° 48' 28.63" N	103° 23' 10.46" E
"J" or JULIET Point	Maharakham University	R-285 / 31.0D ROT	16° 14' 33.17" N	103° 15' 03.57" E
"L" or LIMA Point	Lao Luang Temple	R-209 / 28.0D ROT	15° 42' 06.02" N	103° 32' 48.97" E
"S" or SIERRA Point	Salaloi Lake	R-119 / 11.0D ROT	16° 01' 53.12" N	103° 56' 24.99" E
"T" or TANGO Point	Wat Bueng Sai Thong	R-286 / 9.4D ROT	16° 09' 23.79" N	103° 36' 51.83" E
"Y" or YANKEE Point	Mueang Yasothon	R-132 / 29.0D ROT	15° 47' 45.62" N	104° 08' 52.16" E
"Z" or ZULU Point	Lerng Sew Lake	R-033 / 30.0D ROT	16° 32' 31.41" N	104° 02' 54.65" E
ROI ET VOR/DME (ROT)	ROI ET VOR/DME Station	-	16° 07' 00.59" N	103° 46' 19.45" E

CHANGE : NEW CHART.